



ARTIST'S CONCEPTUAL RENDERING.
Surrounding buildings and landmarks modified or omitted.



CONTENTS

CASAMAR	Elevated Oceanfront	05
AMENITIES & SERVICES	Exquisite & Inspired	11
RESIDENCES	Elegant Oceanfront Lifestyle	25
POMPANO BEACH	A Sun-Soaked City	33
MEET OUR TEAM	It Takes A Vision	41



CASAMAR

Elevated Oceanfront Living, Directly on the Sand

Casamar presents a new wave of oceanfront living amidst the beauty of Pompano Beach. A lifestyle charged by the sun, from the moment it peaks above the turquoise horizon to its final descent behind twinkling city lights. Casamar is an inspired breath of ocean air and sophistication.





BUILDING FEATURES

Exquisite location directly on 283 linear feet of pristine oceanfront in Pompano Beach

Iconic architecture by Arquitectonica

Lush landscaping by Arquitectonica GEO

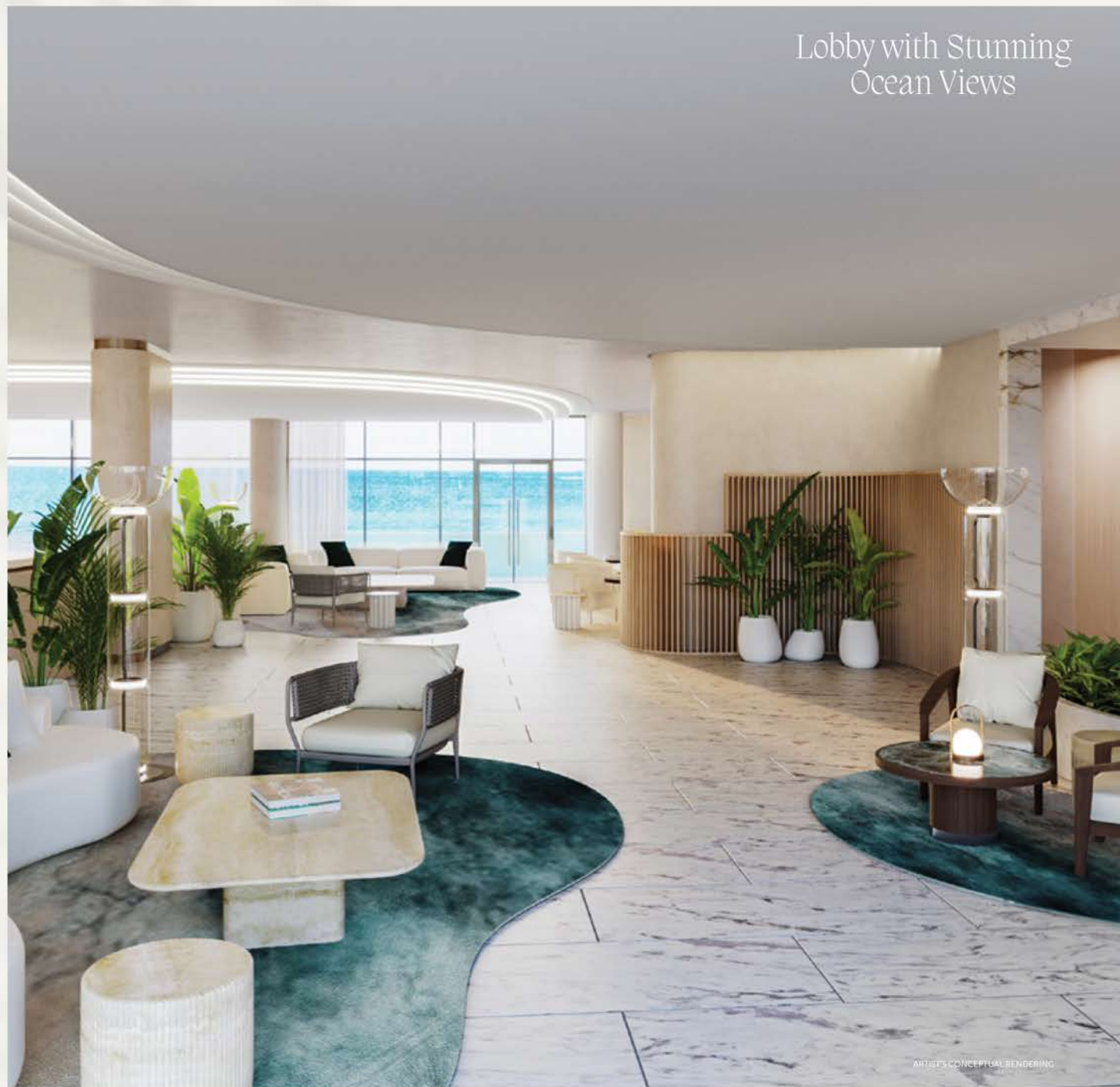
Lobby with direct ocean view

Exquisitely appointed public spaces designed by the award-winning firm Rockwell Group

Curated collection of contemporary art selected to compliment resident amenity spaces

Minutes from Hillsboro Lighthouse, Pompano Beach Pier and Fishing Village, dining and recreational activities, and more

Lobby with Stunning
Ocean Views



ARTIST'S CONCEPTUAL RENDERING



☀️
Exquisite beach
living where time
is *lost* and
an oceanside
escape is *found*

|
A JOURNEY UNDER THE SUN

ARTIST'S CONCEPTUAL RENDERING.
Surrounding buildings and landmarks modified or omitted.



Sunrise Pool Deck
ARTIST'S CONCEPTUAL RENDERING



AMENITIES & SERVICES

Exquisite & Inspired

Casamar is a distinctive oceanfront oasis to call home,
with a lifestyle of endless possibility.

Framed by the stunning sunrise and sunset of
Pompano Beach, there are endless opportunities to
enrich your day and embrace every moment.





AMENITIES & SERVICES

- Personalized concierge services to assist residents
- Sunrise and Sunset Swimming Pools overlooking the Atlantic Ocean and the Intracoastal Waterway, featuring cabanas and Summer Kitchens for outdoor grilling
- The Promenade Lounge, offering a variety of gathering areas with breathtaking views of the Atlantic Ocean
- Fitness center inclusive of his and her saunas overlooking the tropical poolside sanctuary and ocean
- Club Room with multimedia and gaming table, as well as two private party rooms with full catering kitchens
- Golf Simulator Room, inclusive of mini bar
- Lobby Welcome Station serving coffee and light bites
- Open green gathering spaces and relaxing outdoor lounges
- Pickleball Court
- Water Sport Storage
- Dedicated Pool and Beach attendants
- 24/7 Valet Parking and on-premises security



Pickleball Court

ARTIST'S CONCEPTUAL RENDERING



Golf Simulator Room

ARTIST'S CONCEPTUAL RENDERING



Sunrise
Pool Deck



ARTIST'S CONCEPTUAL RENDERING



Sunset
Pool Deck



ARTIST'S CONCEPTUAL RENDERING



Game Room



ARTISTS CONCEPTUAL RENDERING



Chef's Kitchen



ARTIST'S CONCEPTUAL RENDERING



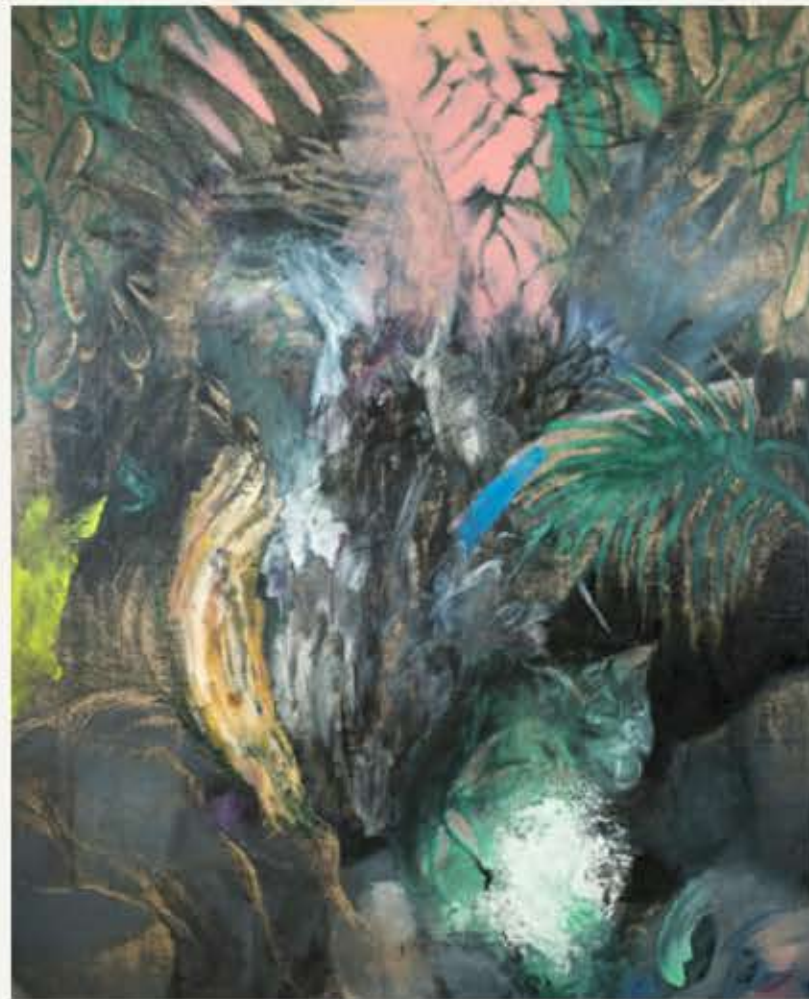
Anna Valdez, *Coral Specimen with Still Life*
(2021) OIL AND ACRYLIC ON CANVAS



Caetano de Almeida, *Murta*
(2016) ACRYLIC ON CANVAS



Billy Al Bengston, *Ka'ao watercolor*
(1984) WATERCOLOR AND COLLAGE ON PAPER



Jessica Webster, *Candy Crush no. 98, (Green Beast)*
(2020) OIL PAINT AND WAX ON JUTE CANVAS



“Original museum-quality works of art infuse Casamar with beauty, energy & sophistication.”

- JORGE M. PÉREZ | FOUNDER, CHAIRMAN & CEO, THE RELATED GROUP



Living Area With Panoramic Views
ARTIST'S CONCEPTUAL RENDERING



CASAMAR RESIDENCES

Elegant Oceanfront Lifestyle

The Rockwell Group, an international award-winning firm that helps the vision for Casamar's highly curated interior design, alongside masterful architecture by world renown Arquitectonica.

With interiors meticulously designed to weave natural elements and contemporary finishes, Casamar offers an effortless feeling of sophisticated luxury.



RESIDENCE FEATURES

Flow-through contemporary floor plans featuring floor-to-ceiling windows with breathtaking views of the city, the Atlantic Ocean and the Intracoastal Waterway

Unobstructed eastern views from all residences

Oversized terraces with continuous glass railings

Private elevator access and entry foyers in all residences

Separate service elevators accessible to all residences

Kitchens designed with Italian cabinetry, countertops, Sub-Zero/Wolf appliances and integrated espresso/cappuccino system

Spacious and tranquil master bathrooms featuring contemporary finishes, Hansgrohe fixtures, beautiful vanities and deep soaking tub

Laundry room with full-size washer and dryer and sink (in most residences)

Pre-wired smart home

Customized password-protected app to manage your smart home

Open Kitchen



ARTIST'S CONCEPTUAL RENDERING

Master Bathroom



ARTIST'S CONCEPTUAL RENDERING



Living Area
With Panoramic Views



ARTIST'S CONCEPTUAL RENDERING



Great Room



ARTIST'S CONCEPTUAL RENDERING



POMPANO BEACH

A Sun-Soaked City

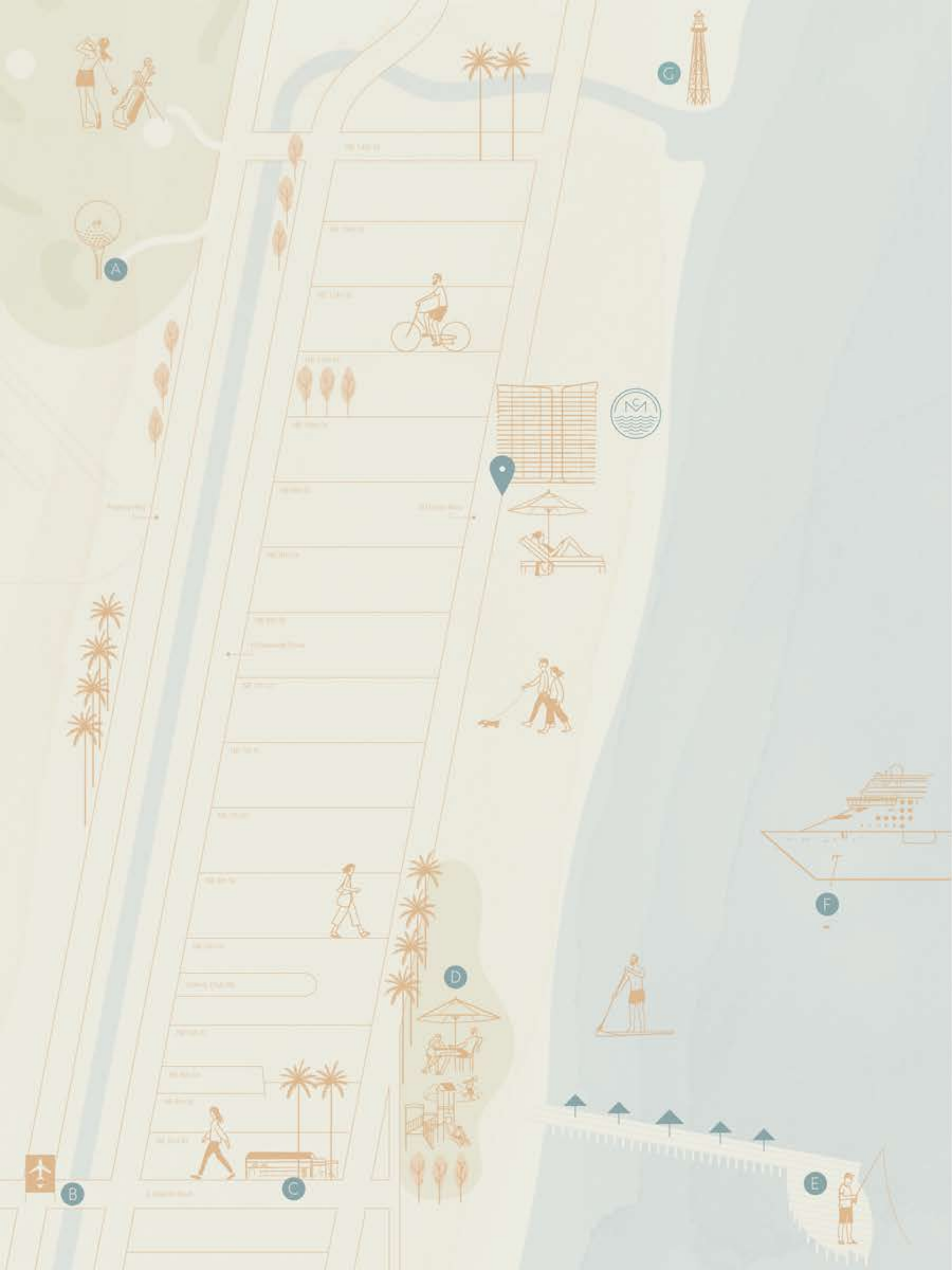
Pompano's greatest draw is its pristine beach. With a prime location between West Palm and Fort Lauderdale, Pompano has gained recognition as a charming beach town layered with sophistication, culture, and cuisine. From its famed pier and lighthouse to a newly developed promenade with expansive beach front, Pompano offers a city with limitless possibility.



Pompano is
a charming beach
town layered
with *sophistication*,
culture & cuisine.

THE IDEAL BACKDROP FOR CASAMAR'S
DESIRABLE LIFESTYLE





Location Map

- Casamar 900 N OCEAN BLVD
- Pompano Beach Cafes, Boardwalk & Playground
- Pompano Golf Course
- Pompano Beach Pier
- Ft. Lauderdale International Airport 30 MINS
- Port Everglades 35 MINS
- Pompano Beach Dining
- Pompano Beach Lighthouse

Neighborhood

RESTAURANTS

- Houston's
- Café Maxx
- Beach House
- Nauti Dawg Marina Café
- Oceanica
- Two George's
- Oceans 234

SHOPPING

- Sawgrass Mills Mall
- Boca Raton Town Center Mall
- Galleria Mall

THEATERS

- AMC Dine-In Theatres Coral Ridge 10
- Broward Center for the Performing Arts
- The Classic Gateway Theatre

MUSEUMS

- Hillsboro Lighthouse Museum
- Boca Raton Museum of Art
- Sample-McDougald House Museum

PARKS

- Highlands Park
- Pompano Community Park
- Hillsboro Inlet Park

HEALTH & FITNESS

- Crossfit Pompano Beach
- Orange Theory
- Cycleward Studio
- LA Fitness

COUNTRY CLUBS

- Palm-Aire Country Club
- Lago Mar Country Club
- Coral Ridge Country Club

PRIVATE SCHOOLS

- Westminster Academy
- Lighthouse Christian School
- St. Thomas Aquinas
- Pine Crest School
- North Broward Preparatory School
- Cardinal Gibbons
- American Heritage

MARINAS

- Lighthouse Point Marina
- Hidden Harbour Marina
- Marina One

AIRPORTS

- Pompano Beach Airpark
- Boca Raton Executive Airport
- Palm Beach Intl Airport

HOUSE OF WORSHIP

- St. Gabriel Catholic Church
- Christ Community Church
- Temple Shalom Conservative



“This *pure* and
uncomplicated life
on the sand
is everything you
dreamed it would be.”

- JORGE M. PÉREZ | FOUNDER, CHAIRMAN &
CEO, THE RELATED GROUP





MEET OUR TEAM

Vision Leads The Way



DEVELOPER

Established in 1979, The Related Group is Florida's leading developer of sophisticated metropolitan living and one of the country's largest real estate conglomerates. Since its inception, the privately held company has built, rehabilitated and managed over 100,000 condominium, rental and commercial units. The firm is one of the largest Hispanic-owned businesses in the United States with a development portfolio in excess of \$40 billion in 40+ years.

The Related Group has earned awards and recognition throughout the United States and internationally for its visionary designs and development of luxury condominiums, market-rate rentals, mixed-use centers and affordable properties – often in emerging neighborhoods that impact the lives of all demographics. The Related Group has redefined real estate by diversifying both its products and buyers, expanding internationally while also sponsoring public art installations that enhance cities' global culture and streetscapes.

TIME Magazine named Founder, Chairman and CEO of The Related Group, Jorge M. Pérez, one of the top 25 most influential Hispanics in the United States. Currently, The Related Group has over 70 projects in varying phases of development. In addition, Pérez and The Related Group boast one of the most extensive, private international contemporary art collections in the world, one in which each piece is carefully selected by our full-time curators in order to achieve the perfect balance of nature, art and design.



rockwellgroup

INTERIOR DESIGNER

Based in New York with offices in Los Angeles and Madrid, Rockwell Group is an interdisciplinary architecture and design firm that emphasizes innovation and thought leadership in every project. Founded by David Rockwell, FAIA, and led by David and partners Shawn Sullivan and Greg Keffer, the 250-person firm merges performance and architecture to create extraordinary experiences and built environments across the globe. Inspired by theater, technology, and high-end craft, the firm creates a unique narrative for each project, ranging from restaurants, hotels, cultural and educational institutions, airport terminals, to festivals, museum exhibitions, and Broadway sets.

Projects include the FUTURES exhibition at the Smithsonian Arts and Industries Building; Equinox Hotel (New York); 15 Hudson Yards; the Miami Dolphins Baptist Health Training Complex; Nobu hotels

and restaurants worldwide; W Hotels worldwide; The Perelman, a new arts center in New York (Restaurant and Lobby Interior Architect); and the 93rd Oscars. David Rockwell's newest book, DRAMA, was published by Phaidon in May 2021. Honors and recognition include the 2016 Tony Award for Best Scenic Design for She Loves Me; two Emmy Awards for production design for the Oscars (2021 and 2010); the AIAA President's Award; the Cooper Hewitt National Design Award; and the Presidential Design Award.

ARQUITECTONICA

RESIDENTIAL ARCHITECT

Arquitectonica is an international architecture, landscape architecture, interior design and urban planning corporation headquartered in Miami, Florida's Coconut Grove neighborhood. Arquitectonica began in 1977 as an experimental studio founded by Peruvian architect Bernardo Fort-Brescia, Laurinda Hope Spear, Andrés Duany, Elizabeth Plater Zyberk and Hervin Romney. Today, the firm is still led by Bernardo Fort-Brescia and Laurinda Hope Spear, and has designed such famous buildings as the Banco de Crédito Headquarters, in Lima, Peru, Atlantis Condominium in Miami, The Pink House in Miami, the American Airlines Arena in Miami and the Westin Hotel and entertainment complex in New York, amongst many others.

