



**ST REGIS**  
MIAMI  
THE RESIDENCES

# LPHC

Future residences located at  
1809 Brickell Avenue  
Miami, Florida 33129

 **RELATED**  **INTEGRA**

**THE ASTOR TOWER**

5 BEDROOMS | 6 BATHROOMS | 1 POWDER ROOM  
INTERIOR: 5,817 SF | 540.4 SQM EXTERIOR: 779 SF | 72.4 SQM



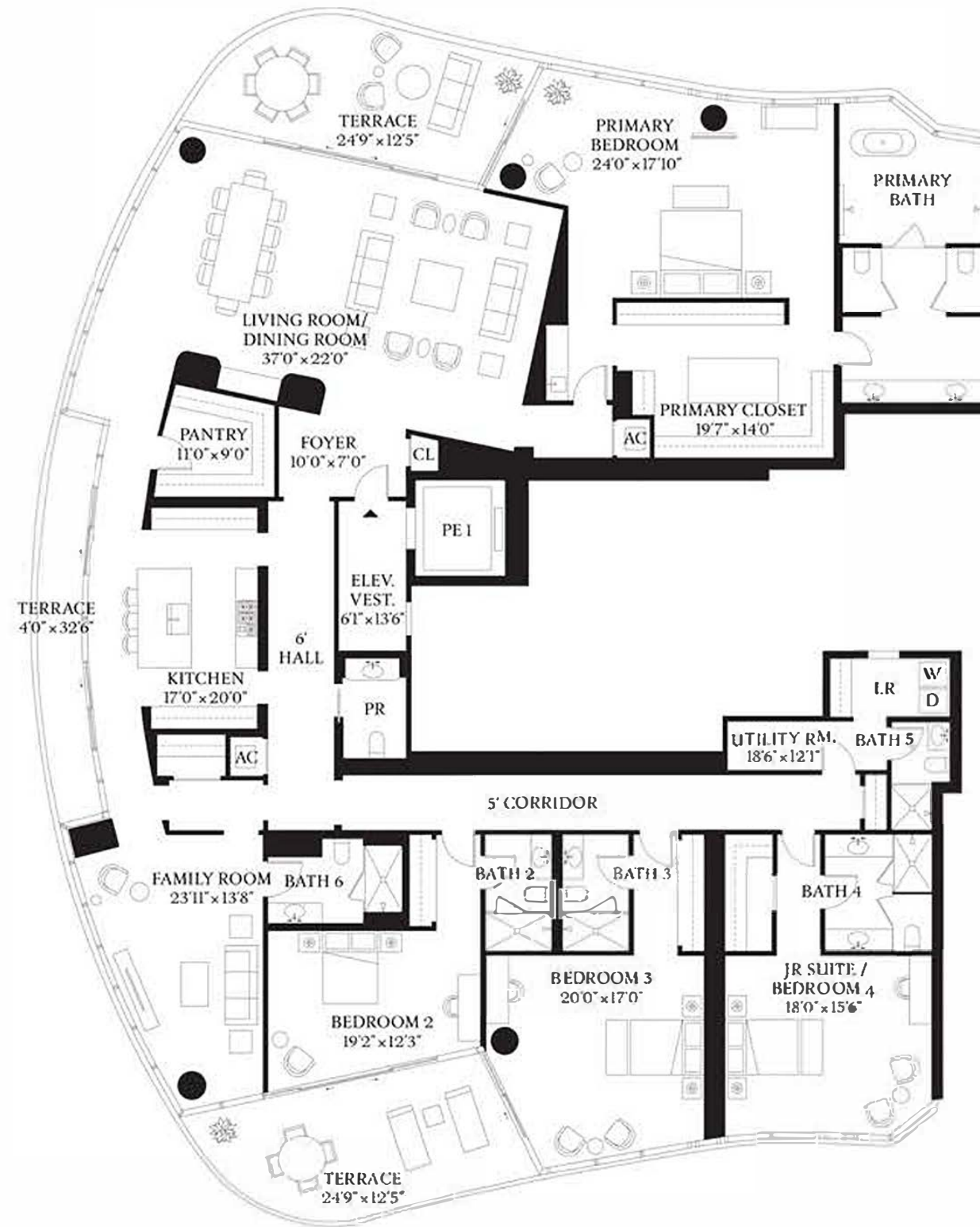
**ST REGIS**  
MIAMI  
THE RESIDENCES

RESIDENCE

**LPHC**

EAST TOWER  
5 BEDROOMS  
6 BATHROOMS  
1 POWDER ROOM

INTERIOR  
5,817 SF | 540.4 SQM  
EXTERIOR  
779 SF | 72.4 SQM

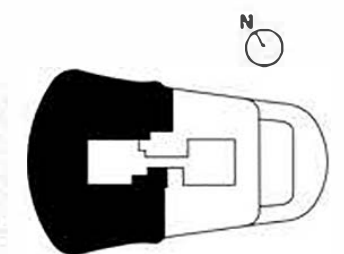


BISCAYNE BAY

ORAL REPRESENTATIONS CANNOT BE RELIED UPON AS CORRECTLY STATING REPRESENTATIONS OF THE DEVELOPER. FOR CORRECT REPRESENTATIONS, MAKE REFERENCE TO THIS BROCHURE AND THE DOCUMENTS REQUIRED BY SECTION 718.503, FLORIDA STATUTES, TO BE FURNISHED BY A DEVELOPER TO A BUYER OR LESSEE.

The St. Regis Residences, Miami East Tower a condominium within The St. Regis Residences, Miami (the "East" condominium) is developed by 1809 Brickell Property Owner, LLC whereas The St. Regis Residences, Miami West Tower (the "West" condominium) is developed by 1809 Brickell Phase II, LLC. The West is not available yet but will be soon. No specific view is guaranteed. The St. Regis Residences, Miami is not owned, developed, or sold by Marriott International, Inc. or its affiliates ("Marriott"), which has not confirmed the accuracy of any of the statements or representations made about the project by either developer. Pursuant to license agreements, each developer has a right to use the trade names, marks, and logos of Marriott's St Regis, The Related Group, and Integra Investments, LLC, each of which are licensors. Consult the respective developer's Prospectus for the proposed budget, terms, conditions, specifications, fees, and Unit dimensions.

BRICKELL AVE





**ST REGIS**  
MIAMI  
THE RESIDENCES

RESIDENCE

**MPHC**

EAST TOWER

5 BEDROOMS

6 BATHROOMS

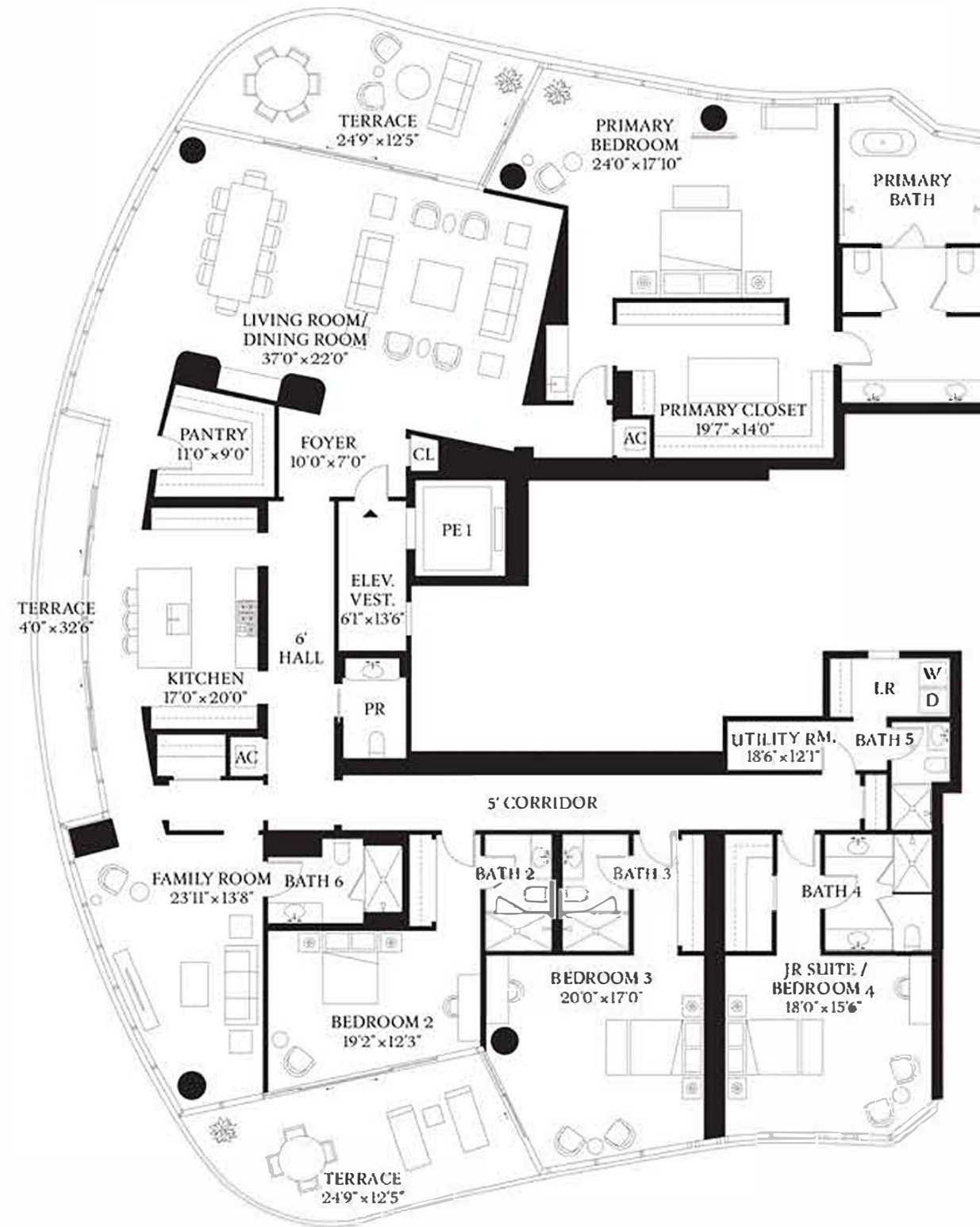
1 POWDER ROOM

INTERIOR

5,817 SF | 540.4 SQM

EXTERIOR

779 SF | 72.4 SQM

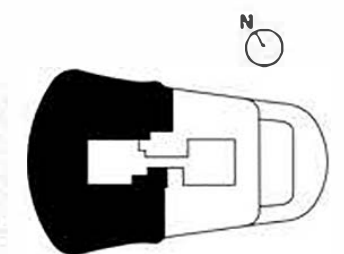


BISCAYNE BAY

ORAL REPRESENTATIONS CANNOT BE RELIED UPON AS CORRECTLY STATING REPRESENTATIONS OF THE DEVELOPER. FOR CORRECT REPRESENTATIONS, MAKE REFERENCE TO THIS BROCHURE AND THE DOCUMENTS REQUIRED BY SECTION 718.503, FLORIDA STATUTES, TO BE FURNISHED BY A DEVELOPER TO A BUYER OR LESSEE.

The St. Regis Residences, Miami East Tower a condominium within The St. Regis Residences, Miami (the "East" condominium) is developed by 1809 Brickell Property Owner, LLC whereas The St. Regis Residences, Miami West Tower (the "West" condominium) is developed by 1809 Brickell Phase II, LLC. The West is not available yet but will be soon. No specific view is guaranteed. The St. Regis Residences, Miami is not owned, developed, or sold by Marriott International, Inc. or its affiliates ("Marriott"), which has not confirmed the accuracy of any of the statements or representations made about the project by either developer. Pursuant to license agreements, each developer has a right to use the trade names, marks, and logos of Marriott's St Regis, The Related Group, and Integra Investments, LLC, each of which are licensors. Consult the respective developer's Prospectus for the proposed budget, terms, conditions, specifications, fees, and Unit dimensions.

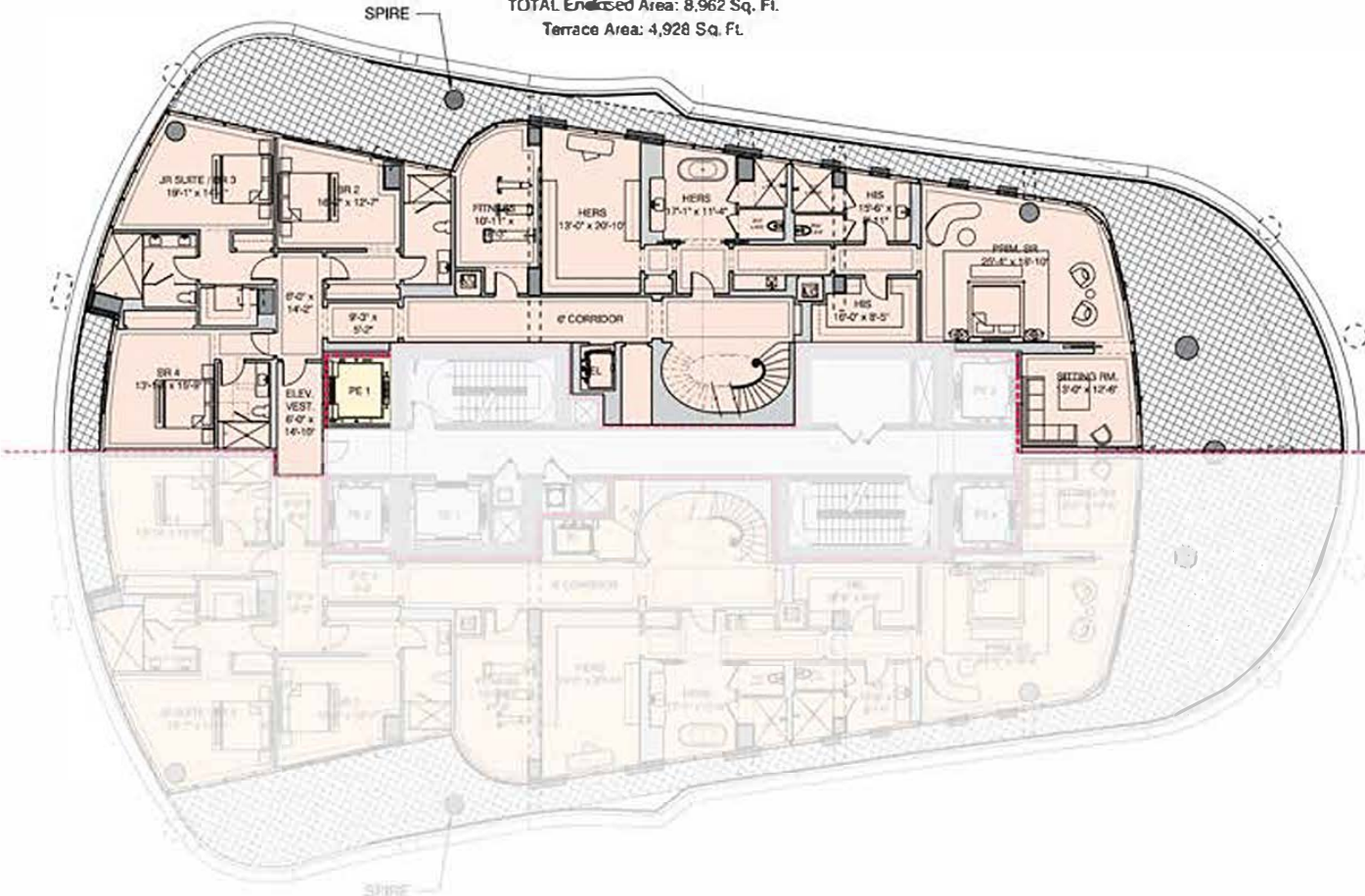
BRICKELL AVE



# EAST TOWER - LEVEL 47

## UNIT P - 6BR

LOWER Enclosed Area: 4,327 Sq. Ft.  
 UPPER Enclosed Area: 4,185 Sq. Ft.  
 ROOF Enclosed Area: 450 Sq. Ft.  
 TOTAL Enclosed Area: 8,962 Sq. Ft.  
 Terrace Area: 4,928 Sq. Ft.

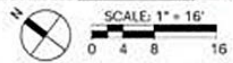
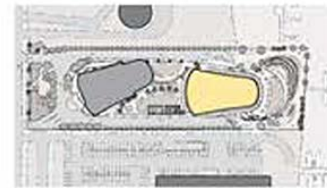
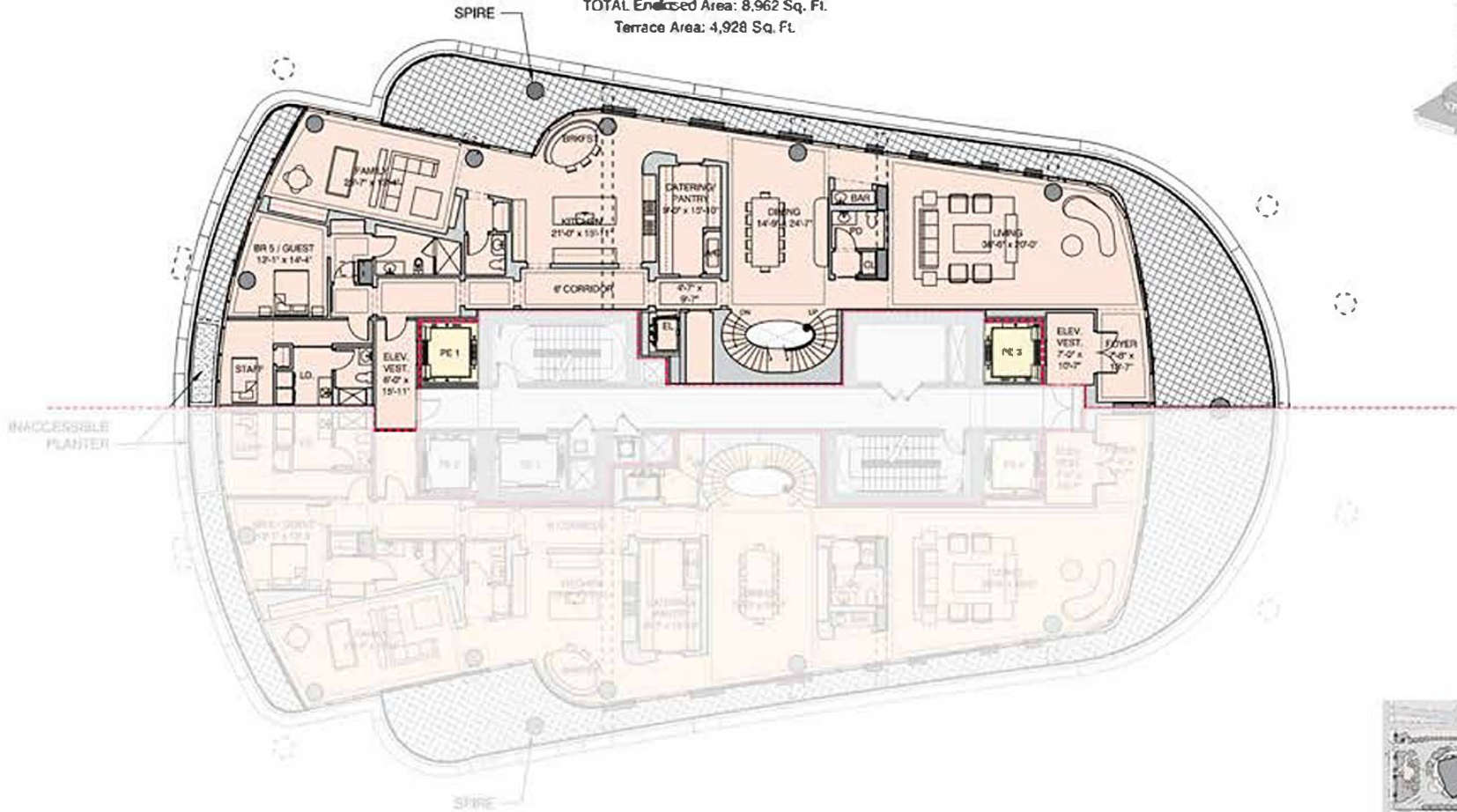


SCALE: 1" = 16'  
 0 4 8 16

# EAST TOWER - LEVEL 48

## UNIT P - 6BR

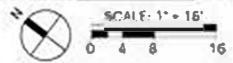
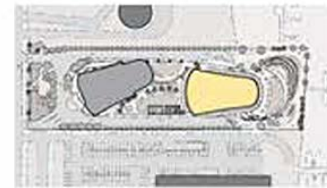
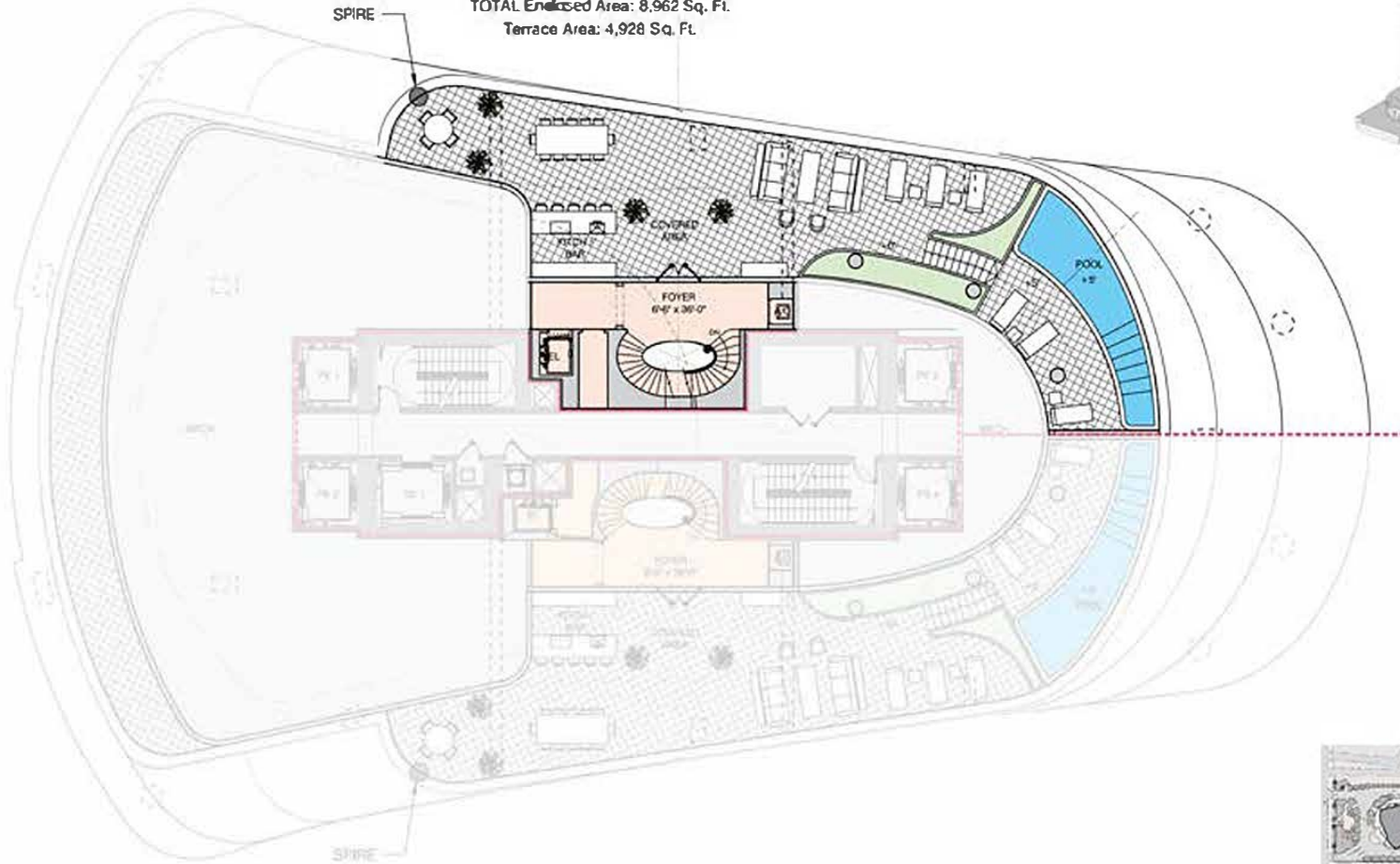
LOWER Enclosed Area: 4,327 Sq. Ft.  
UPPER Enclosed Area: 4,185 Sq. Ft.  
ROOF Enclosed Area: 450 Sq. Ft.  
TOTAL Enclosed Area: 8,962 Sq. Ft.  
Terrace Area: 4,928 Sq. Ft.



# EAST TOWER - LEVEL 49 - ROOF DECK

## UNIT P - 6BR

LOWER Enclosed Area: 4,327 Sq. Ft.  
UPPER Enclosed Area: 4,185 Sq. Ft.  
ROOF Enclosed Area: 450 Sq. Ft.  
TOTAL Enclosed Area: 8,962 Sq. Ft.  
Terrace Area: 4,928 Sq. Ft.





**ST REGIS**  
MIAMI  
THE RESIDENCES

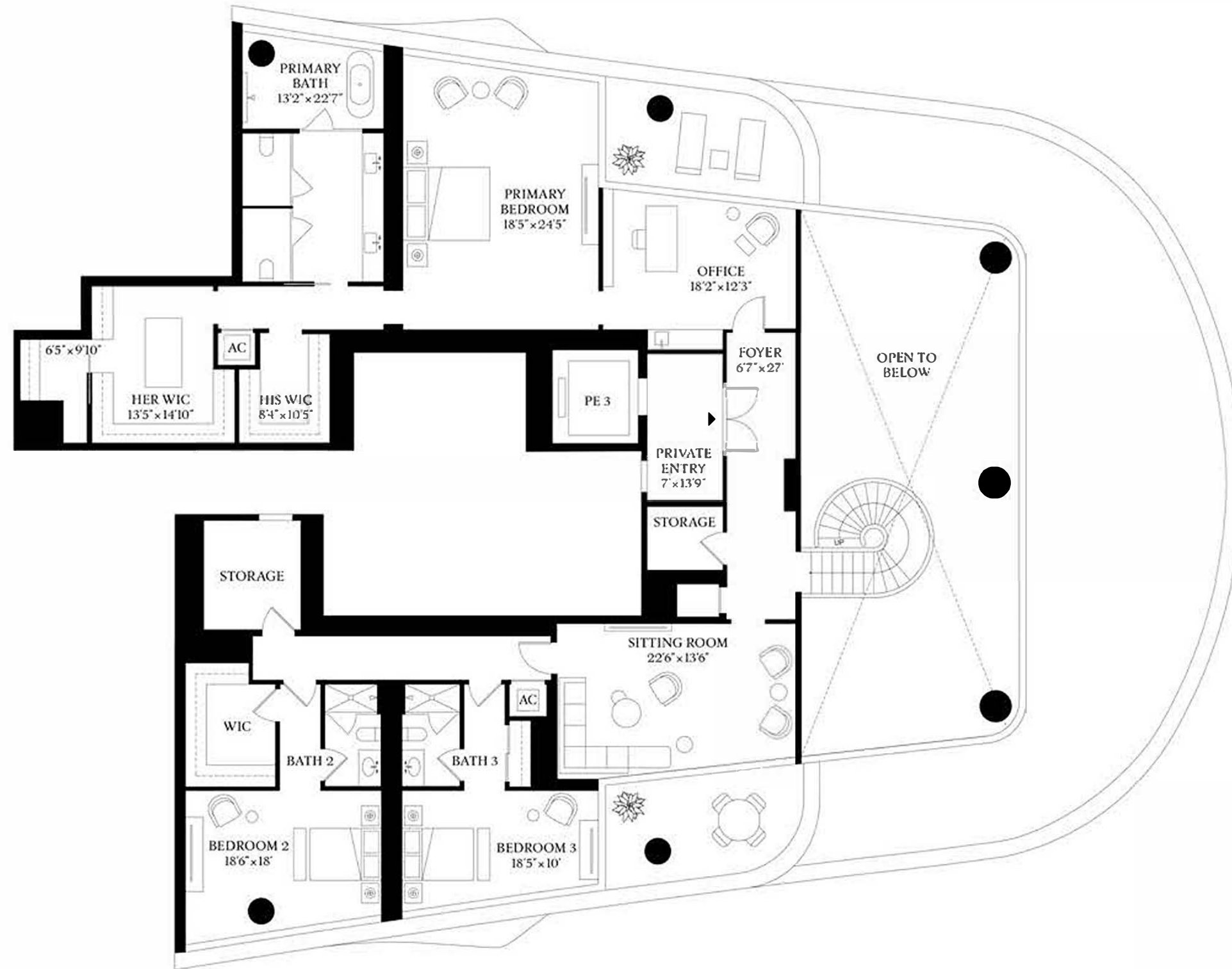
RESIDENCE  
**LPHA**

UPPER LEVEL

EAST TOWER  
6 BEDROOMS  
6 BATHROOMS  
1 POWDER ROOM

COMBINED  
INTERIOR: 8,286 SF | 769 SQM  
EXTERIOR: 1,688 SF | 156 SQM

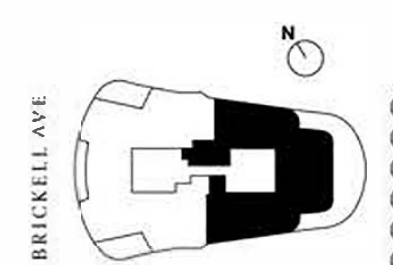
UPPER LEVEL  
INTERIOR: 3,415 SF | 320 SQM  
EXTERIOR: 346 SF | 32 SQM



BISCAYNE BAY

ORAL REPRESENTATIONS CANNOT BE RELIED UPON AS CORRECTLY STATING REPRESENTATIONS OF THE DEVELOPER. FOR CORRECT REPRESENTATIONS, MAKE REFERENCE TO THIS BROCHURE AND THE DOCUMENTS REQUIRED BY SECTION 718.503, FLORIDA STATUTES, TO BE FURNISHED BY A DEVELOPER TO A BUYER OR LESSEE.

The St. Regis Residences, Miami East Tower a condominium within The St. Regis Residences, Miami (the "East" condominium) is developed by 1809 Brickell Property Owner, LLC whereas The St. Regis Residences, Miami West Tower (the "West" condominium) is developed by 1809 Brickell Phase II, LLC. The West is not available yet but will be soon. No specific view is guaranteed. The St. Regis Residences, Miami is not owned, developed, or sold by Marriott International, Inc. or its affiliates ("Marriott"), which has not confirmed the accuracy of any of the statements or representations made about the project by either developer. Pursuant to license agreements, each developer has a right to use the trade names, marks, and logos of Marriott's St. Regis, The Related Group, and Integra Investments, LLC, each of which are licensors. Consult the respective developer's Prospectus for the proposed budget, terms, conditions, specifications, fees, and Unit dimensions.





# ST REGIS MIAMI THE RESIDENCES

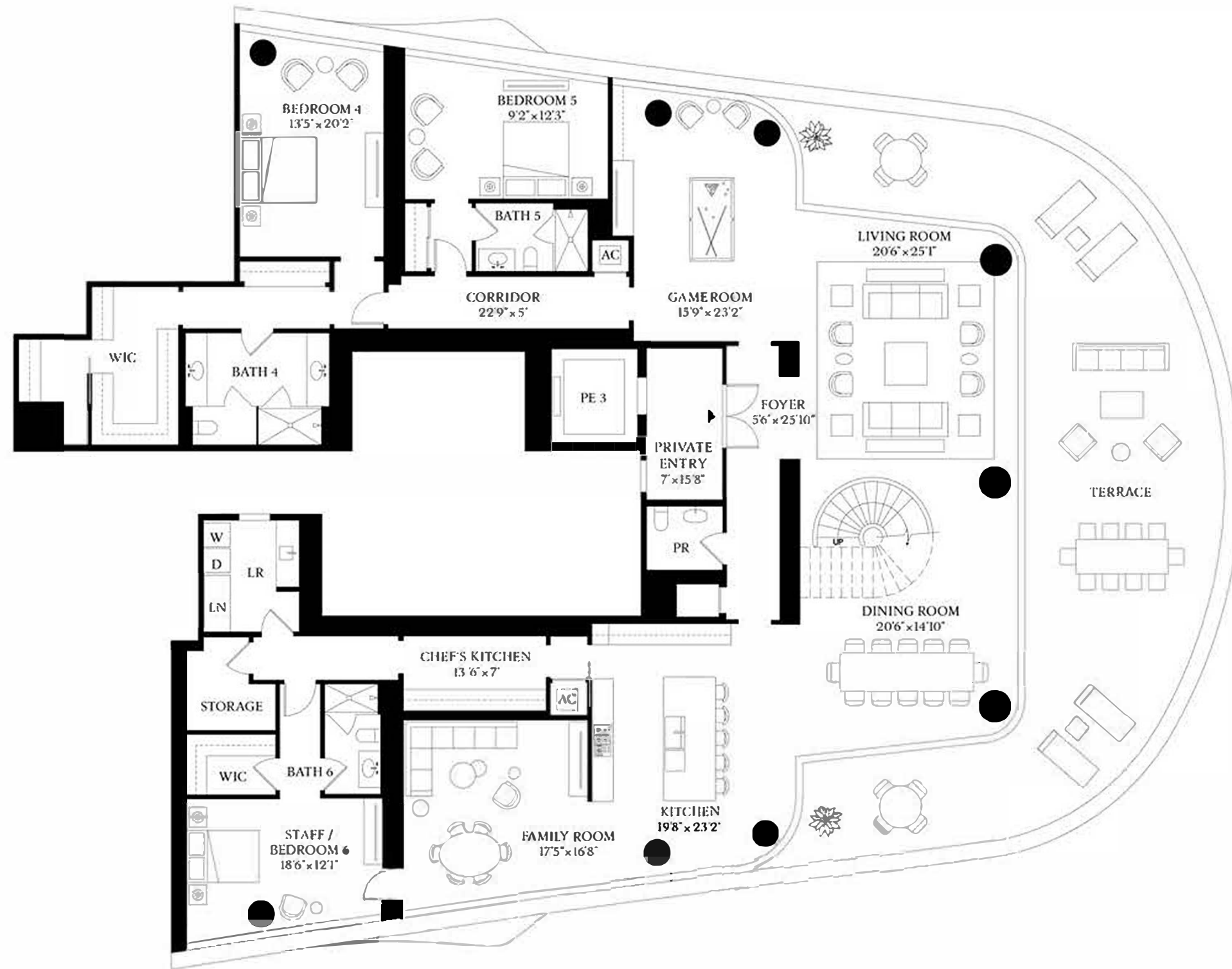
## RESIDENCE LPHA

### LOWER LEVEL

EAST TOWER  
6 BEDROOMS  
6 BATHROOMS  
1 POWDER ROOM

COMBINED  
INTERIOR: 8,286 SF | 769 SQM  
EXTERIOR: 1,688 SF | 156 SQM

LOWER LEVEL  
INTERIOR: 4,841 SF | 449 SQM  
EXTERIOR: 1,342 SF | 124 SQM

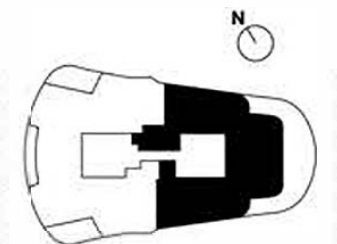


BISCAYNE BAY

ORAL REPRESENTATIONS CANNOT BE RELIED UPON AS CORRECTLY STATING REPRESENTATIONS OF THE DEVELOPER. FOR CORRECT REPRESENTATIONS, MAKE REFERENCE TO THIS BROCHURE AND THE DOCUMENTS REQUIRED BY SECTION 718.503, FLORIDA STATUTES, TO BE FURNISHED BY A DEVELOPER TO A BUYER OR LESSEE.

The St. Regis Residences, Miami East Tower a condominium within The St. Regis Residences, Miami (the "East" condominium) is developed by 1809 Brickell Property Owner, LLC whereas The St. Regis Residences, Miami West Tower (the "West" condominium) is developed by 1809 Brickell Phase II, LLC. The West is not available yet but will be soon. No specific view is guaranteed. The St. Regis Residences, Miami is not owned, developed, or sold by Marriott International, Inc. or its affiliates ("Marriott"), which has not confirmed the accuracy of any of the statements or representations made about the project by either developer. Pursuant to license agreements, each developer has a right to use the trade names, marks, and logos of Marriott's St. Regis. The Related Group, and Integra Investments, LLC, each of which are licensors. Consult the respective developer's Prospectus for the proposed budget, terms, conditions, specifications, fees, and Unit dimensions.

BRICKELL AVE





# ST REGIS MIAMI THE RESIDENCES

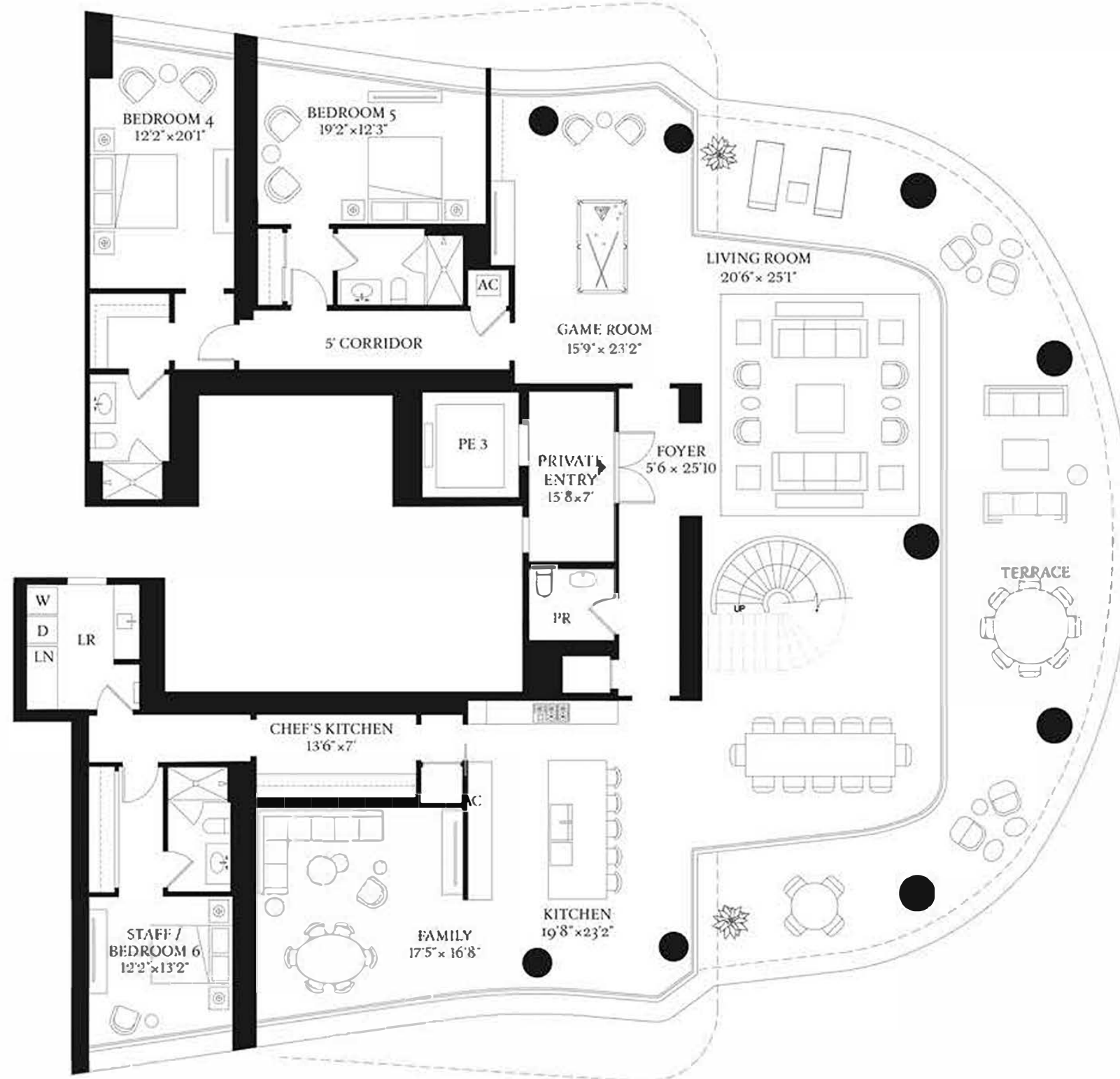
RESIDENCE

## I9A

LOWER LEVEL

EAST TOWER  
5 BEDROOMS  
6 BATHROOMS  
1 POWDER ROOM

INTERIOR  
8,373 SF | 777 SQM  
EXTERIOR  
1,312 SF | 122 SQM



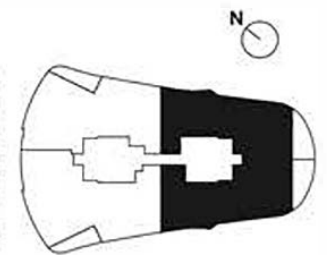
BISCAYNE BAY

1809 Brickell Avenue  
Miami, FL 33129

ORAL REPRESENTATIONS CANNOT BE RELIED UPON AS CORRECTLY STATING REPRESENTATIONS OF THE DEVELOPER. FOR CORRECT REPRESENTATIONS, MAKE REFERENCE TO THE DOCUMENTS REQUIRED BY SECTION 718.503, FLORIDA STATUTES, TO BE FURNISHED BY A DEVELOPER TO A BUYER OR LESSEE.

The St. Regis Residences, Miami East Tower a condominium within The St. Regis Residences, Miami (the "Condominium") is developed by 1809 Brickell Property Owner, LLC ("Developer") and this offering is made only by the Developer's Prospectus for the Condominium. Sketches, renderings, or photographs depicting lifestyle, amenities, food services, club services, rental services, hosting services, finishes, designs, materials, furnishings, fixtures, appliances, cabinetry, soffits, lighting, countertops, floor plans, specifications, or art are proposed only and the Developer reserves the right to modify, revise, or withdraw any or all of the same in its sole discretion. No specific view is guaranteed. Dimensions and square footage are approximate and may vary depending on how measured and based upon actual construction. Any art installed will be selected by the Developer at the Developer's sole discretion and shall be owned by Developer and not owned by the Condominium Association. Nearby attractions, shopping venues, restaurants, and activities referenced or depicted are off-site, are not controlled by the Developer, and are not guaranteed to exist upon completion of the Condominium. All statistics referenced are based on public information available as of the date of initial marketing of the Condominium. Pursuant to license agreements Developer has a right to use the trade names, marks, and logos of: (1) St. Regis; (2) St. Regis Residences; (3) The Related Group; and (3) Integra Investments, LLC and the Developer shall continue to have the right to use each respective name and logos affiliated with each name for so long as the license agreement governing use of a name is not terminated or expired. The Association for the Condominium is required to maintain a Residential Condominium Management Agreement with Marriott International, Inc., or its successors and assigns, in order to use the names St. Regis or St. Regis Residences or the logos affiliated with these names. Marriott International, Inc. is not the Developer and is not responsible for the marketing, development or sales of the Condominium. Marriott International, Inc., The Related Group, and Integra Investments, LLC are each licensor, and none is the Developer. Consult the Developer's Prospectus for the proposed budget, terms, conditions, specifications, fees, and unit dimensions. The Developer is not incorporated in, located in, nor a resident of, New York. This is not intended to be an offer to sell, or solicitation of an offer to buy, condominium units in New York or to residents of New York, or of any other jurisdiction were prohibited by law. 2022 © 1809 Brickell Property Owner, LLC, with all rights reserved. ©

BRICKELL AVE





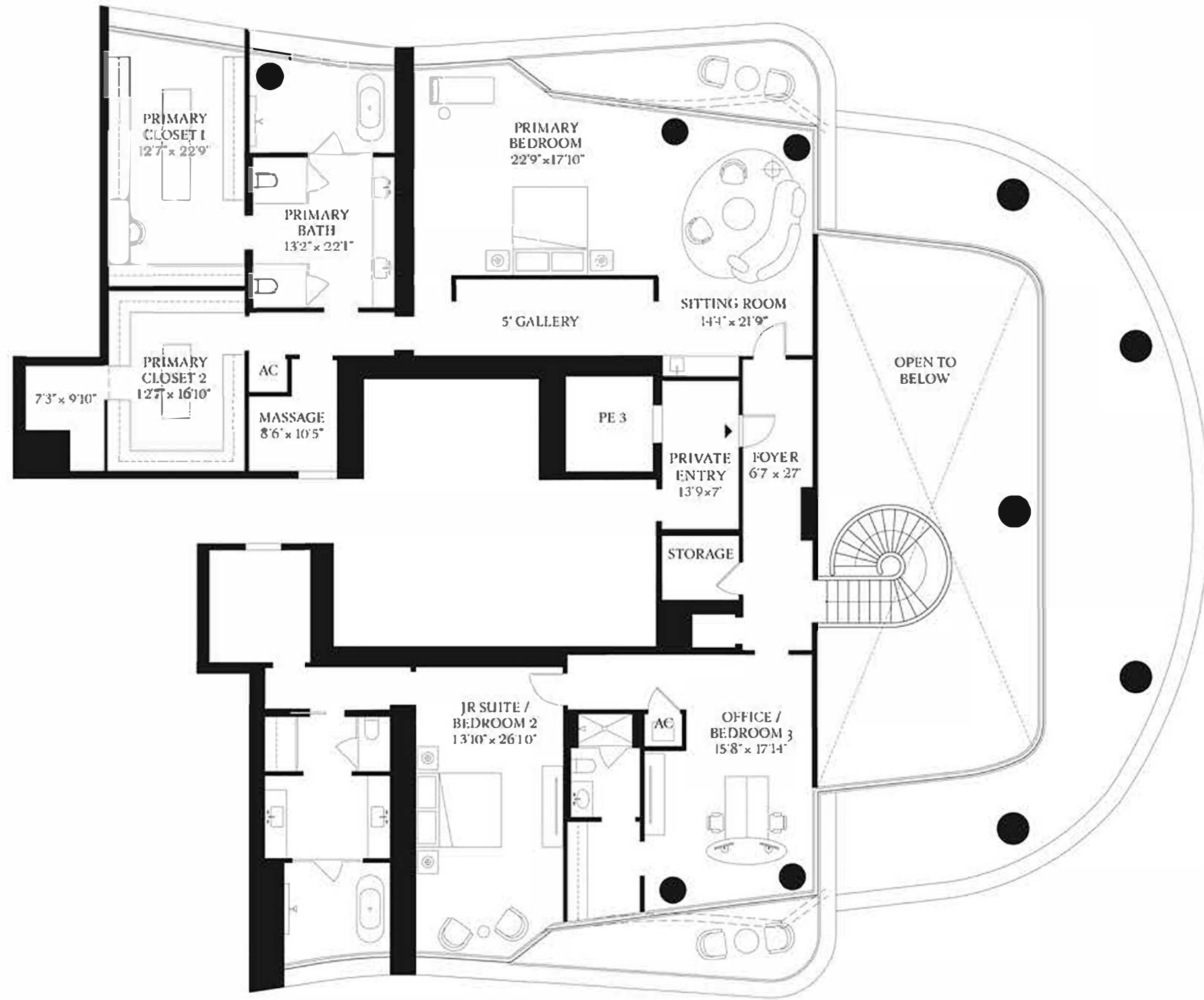
RESIDENCE

I9A

UPPER LEVEL

EAST TOWER  
5 BEDROOMS  
6 BATHROOMS  
1 POWDER ROOM

INTERIOR  
8,373 SF | 777 SQM  
EXTERIOR  
1,312 SF | 122 SQM



ST REGIS  
MIAMI  
THE RESIDENCES

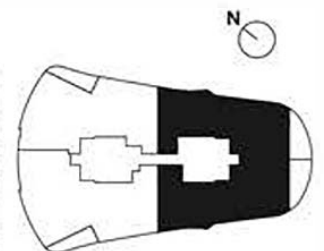
BISCAYNE BAY

1809 Brickell Avenue  
Miami, FL 33129

ORAL REPRESENTATIONS CANNOT BE RELIED UPON AS CORRECTLY STATING REPRESENTATIONS OF THE DEVELOPER. FOR CORRECT REPRESENTATIONS, MAKE REFERENCE TO THE DOCUMENTS REQUIRED BY SECTION 718.503, FLORIDA STATUTES, TO BE FURNISHED BY A DEVELOPER TO A BUYER OR LESSEE.

The St. Regis Residences, Miami East Tower a condominium within The St. Regis Residences, Miami (the "Condominium") is developed by 1809 Brickell Property Owner, LLC ("Developer") and this offering is made only by the Developer's Prospectus for the Condominium. Sketches, renderings, or photographs depicting lifestyle, amenities, food services, club services, rental services, hosting services, finishes, designs, materials, furnishings, fixtures, appliances, cabinetry, soffits, lighting, countertops, floor plans, specifications, or art are proposed only and the Developer reserves the right to modify, revise, or withdraw any or all of the same in its sole discretion. No specific view is guaranteed. Dimensions and square footage are approximate and may vary depending on how measured and based upon actual construction. Any art installed will be selected by the Developer at the Developer's sole discretion and shall be owned by Developer and not owned by the Condominium Association. Nearby attractions, shopping venues, restaurants, and activities referenced or depicted are off-site, are not controlled by the Developer and are not guaranteed to exist upon completion of the Condominium. All statistics referenced are based on public information available as of the date of initial marketing of the Condominium. Pursuant to license agreements Developer has a right to use the trade names, marks, and logos of: (1) St. Regis; (2) St. Regis Residences; (3) The Related Group; and (3) Integra Investments, LLC and the Developer shall continue to have the right to use each respective name and logos affiliated with each name for so long as the license agreement governing use of a name is not terminated or expired. The Association for the Condominium is required to maintain a Residential Condominium Management Agreement with Marriott International, Inc., or its successors and assigns, in order to use the names St. Regis or St. Regis Residences or the logos affiliated with these names. Marriott International, Inc. is not the Developer and is not responsible for the marketing, development, or sales of the Condominium. Marriott International, Inc., The Related Group, and Integra Investments, LLC are each licensor and none is the Developer. Consult the Developer's Prospectus for the proposed budget, terms, conditions, specifications, fees, and unit dimensions. The Developer is not incorporated in, located in, nor a resident of, New York. This is not intended to be an offer to sell, or solicitation of an offer to buy, condominium units in New York or to residents of New York, or of any other jurisdiction where prohibited by law. 2022 © 1809 Brickell Property Owner, LLC, with all rights reserved. ©

BRICKELL AVE





**ST REGIS**  
MIAMI  
THE RESIDENCES

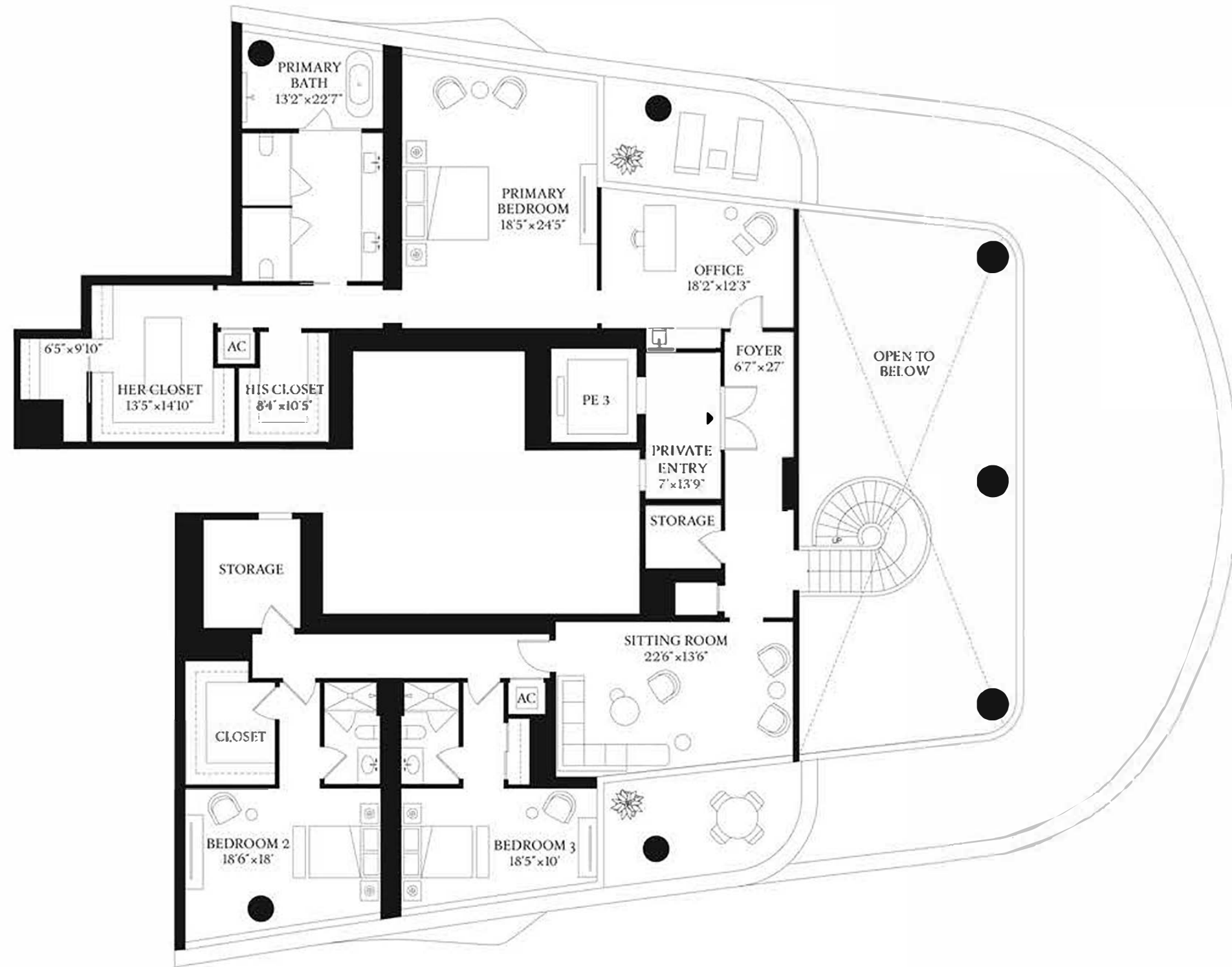
RESIDENCE  
**LPHA**

UPPER LEVEL

EAST TOWER  
6 BEDROOMS  
6 BATHROOMS  
1 POWDER ROOM

COMBINED  
INTERIOR: 8,286 SF | 769 SQM  
EXTERIOR: 1,688 SF | 156 SQM

UPPER LEVEL  
INTERIOR: 3,445 SF | 320 SQM  
EXTERIOR: 346 SF | 32 SQM

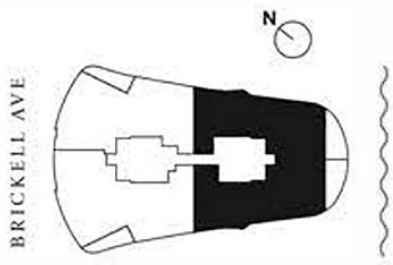


BRISCAVNE BAY

1809 Brickell Avenue  
Miami, FL 33129

**ORAL REPRESENTATIONS CANNOT BE RELIED UPON AS CORRECTLY STATING REPRESENTATIONS OF THE DEVELOPER. FOR CORRECT REPRESENTATIONS, MAKE REFERENCE TO THE DOCUMENTS REQUIRED BY SECTION 718.503, FLORIDA STATUTES, TO BE FURNISHED BY A DEVELOPER TO A BUYER OR LESSEE.**

The St. Regis Residences, Miami East Tower a condominium within The St. Regis Residences, Miami (the "Condominium") is developed by 1809 Brickell Property Owner, LLC ("Developer") and this offering is made only by the Developer's Prospectus for the Condominium. Sketches, renderings, or photographs depicting lifestyle, amenities, food services, club services, rental services, hosting services, finishes, designs, materials, furnishings, fixtures, appliances, cabinetry, soffits, lighting, countertops, floor plans, specifications, or art are proposed only and the Developer reserves the right to modify, revise, or withdraw any or all of the same in its sole discretion. No specific view is guaranteed. Dimensions and square footage are approximate and may vary depending on how measured and based upon actual construction. Any art installed will be selected by the Developer at the Developer's sole discretion and shall be owned by Developer and not owned by the Condominium Association. Nearby attractions, shopping venues, restaurants, and activities referenced or depicted are off-site, are not controlled by the Developer, and are not guaranteed to exist upon completion of the Condominium. All statistics referenced are based on public information available as of the date of initial marketing of the Condominium. Pursuant to license agreements Developer has a right to use the trade names, marks, and logos of: (1) St. Regis; (2) St. Regis Residences; (3) The Related Group; and (3) Integra Investments, LLC and the Developer shall continue to have to the right to use each respective name and logos affiliated with each name for so long as the license agreement governing use of a name is not terminated or expired. The Association for the Condominium is required to maintain a Residential Condominium Management Agreement with Marriott International, Inc., or its successors and assigns, in order to use the names St. Regis or St. Regis Residences or the logos affiliated with these names. Marriott International, Inc. is not the Developer and is not responsible for the marketing, development, or sales of the Condominium. Marriott International, Inc., The Related Group, and Integra Investments, LLC are each licensor, and none is the Developer. Consult the Developer's Prospectus for the proposed budget, terms, conditions, specifications, fees, and Unit dimensions. The Developer is not incorporated in, located in, nor a resident of, New York. This is not intended to be an offer to sell, or solicitation of an offer to buy, condominium units in New York or to residents of New York, or of any other jurisdiction where prohibited by law. 2022 © 1809 Brickell Property Owner, LLC, with all rights reserved.





# ST REGIS MIAMI THE RESIDENCES

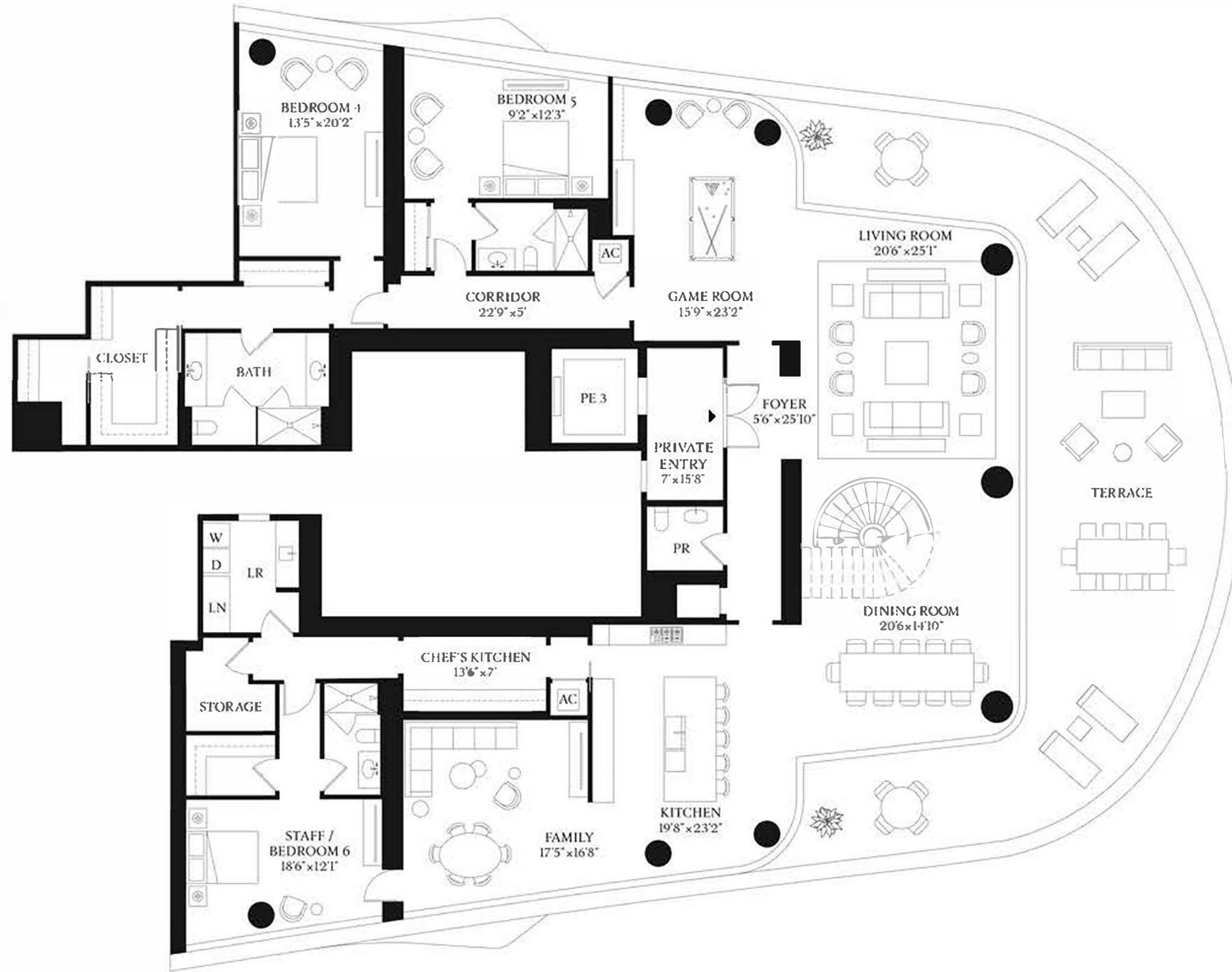
## RESIDENCE LPHA

LOWER LEVEL

EAST TOWER  
6 BEDROOMS  
6 BATHROOMS  
1 POWDER ROOM

COMBINED  
INTERIOR: 8,286 SF | 769 SQM  
EXTERIOR: 1,688 SF | 156 SQM

LOWER LEVEL  
INTERIOR: 4,841 SF | 449 SQM  
EXTERIOR: 1,342 SF | 124 SQM

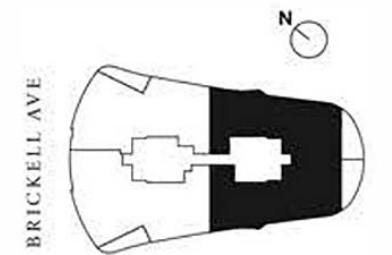


BISCAYNE BAY

1809 Brickell Avenue  
Miami, FL 33129

ORAL REPRESENTATIONS CANNOT BE RELIED UPON AS CORRECTLY STATING REPRESENTATIONS OF THE DEVELOPER. FOR CORRECT REPRESENTATIONS, MAKE REFERENCE TO THE DOCUMENTS REQUIRED BY SECTION 718.503, FLORIDA STATUTES, TO BE FURNISHED BY A DEVELOPER TO A BUYER OR LESSEE.

The St. Regis Residences, Miami East Tower a condominium within The St. Regis Residences, Miami (the "Condominium") is developed by 1809 Brickell Property Owner, LLC ("Developer") and this offering is made only by the Developer's Prospectus for the Condominium. Sketches, renderings, or photographs depicting lifestyle, amenities, food services, club services, rental services, hosting services, finishes, designs, materials, furnishings, fixtures, appliances, cabinetry, softs, lighting, countertops, floor plans, specifications, or art are proposed only and the Developer reserves the right to modify, revise, or withdraw any or all of the same in its sole discretion. No specific view is guaranteed. Dimensions and square footage are approximate and may vary depending on how measured and based upon actual construction. Any art installed will be selected by the Developer at the Developer's sole discretion and shall be owned by Developer and not owned by the Condominium Association. Nearby attractions, shopping venues, restaurants, and activities referenced or depicted are off-site, are not controlled by the Developer, and are not guaranteed to exist upon completion of the Condominium. All statistics referenced are based on public information available as of the date of initial marketing of the Condominium. Pursuant to license agreements Developer has a right to use the trade names, marks, and logos of: (1) St. Regis; (2) St. Regis Residences; (3) The Related Group; and (3) Integra Investments, LLC and the Developer shall continue to have the right to use each respective name and logos affiliated with each name for so long as the license agreement governing use of a name is not terminated or expired. The Association for the Condominium is required to maintain a Residential Condominium Management Agreement with Marriott International, Inc., or its successors and assigns, in order to use the names St. Regis or St. Regis Residences or the logos affiliated with these names. Marriott International, Inc. is not the Developer and is not responsible for the marketing, development, or sales of the Condominium. Marriott International, Inc., The Related Group, and Integra Investments, LLC are each licensor, and none is the Developer. Consult the Developer's Prospectus for the proposed budget, terms, conditions, specifications, fees, and Unit dimensions. The Developer is not incorporated in, located in, nor a resident of, New York. This is not intended to be an offer to sell, or solicitation of an offer to buy, condominium units in New York or to residents of New York, or of any other jurisdiction where prohibited by law. 2022 © 1809 Brickell Property Owner, LLC, with all rights reserved.





# ST REGIS MIAMI THE RESIDENCES

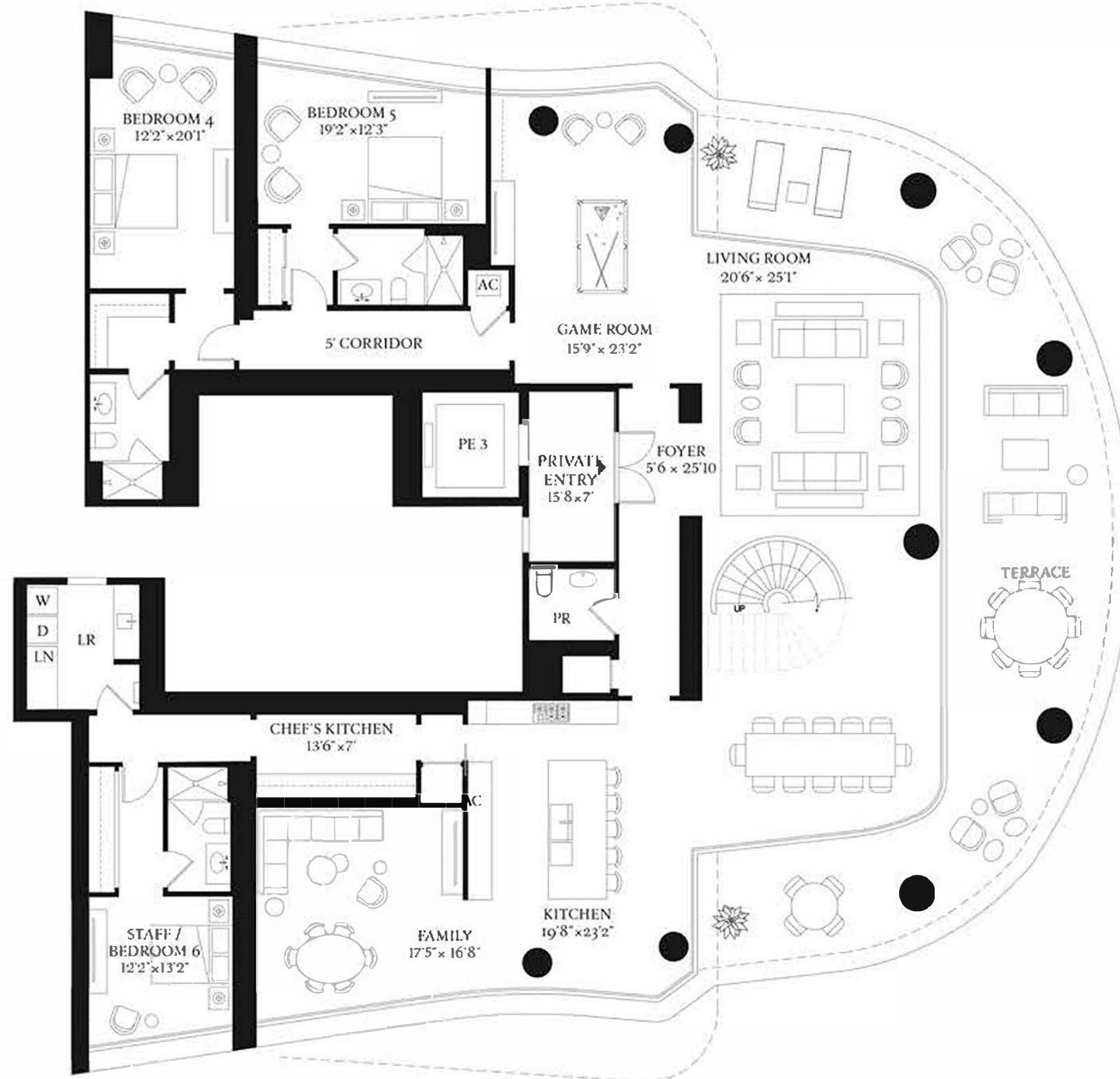
RESIDENCE

# 7A

LOWER LEVEL

EAST TOWER  
5 BEDROOMS  
6 BATHROOMS  
1 POWDER ROOM

INTERIOR  
8,373 SF | 777 SQM  
EXTERIOR  
1,312 SF | 122 SQM

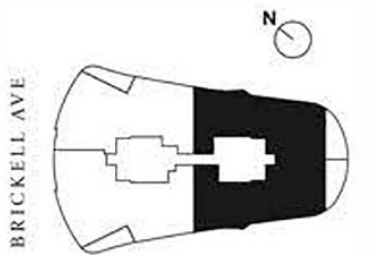


BISCAYNE BAY

1809 Brickell Avenue  
Miami, FL 33129

**ORAL REPRESENTATIONS CANNOT BE RELIED UPON AS CORRECTLY STATING REPRESENTATIONS OF THE DEVELOPER. FOR CORRECT REPRESENTATIONS, MAKE REFERENCE TO THE DOCUMENTS REQUIRED BY SECTION 718.503, FLORIDA STATUTES, TO BE FURNISHED BY A DEVELOPER TO A BUYER OR LESSEE.**

The St. Regis Residences, Miami East Tower a condominium within The St. Regis Residences, Miami (the "Condominium") is developed by 1809 Brickell Property Owner, LLC ("Developer") and this offering is made only by the Developer's Prospectus for the Condominium. Sketches, renderings, or photographs depicting lifestyle, amenities, food services, club services, rental services, hosting services, finishes, designs, materials, furnishings, fixtures, appliances, cabinetry, soffits, lighting, countertops, floor plans, specifications, or art are proposed only and the Developer reserves the right to modify, revise, or withdraw any or all of the same in its sole discretion. No specific view is guaranteed. Dimensions and square footage are approximate and may vary depending on how measured and based upon actual construction. Any art installed will be selected by the Developer at the Developer's sole discretion and shall be owned by Developer and not owned by the Condominium Association. Nearby attractions, shopping venues, restaurants, and activities referenced or depicted are off-site, are not controlled by the Developer, and are not guaranteed to exist upon completion of the Condominium. All statistics referenced are based on public information available as of the date of initial marketing of the Condominium. Pursuant to license agreements Developer has a right to use the trade names, marks, and logos of: (1) St. Regis; (2) St. Regis Residences; (3) The Related Group; and (3) Integra Investments, LLC and the Developer shall continue to have the right to use each respective name and logos affiliated with each name for so long as the license agreement governing use of a name is not terminated or expired. The Association for the Condominium is required to maintain a Residential Condominium Management Agreement with Marriott International, Inc., or its successors and assigns, in order to use the names St. Regis or St. Regis Residences or the logos affiliated with these names. Marriott International, Inc. is not the Developer and is not responsible for the marketing, development, or sales of the Condominium. Marriott International, Inc., The Related Group, and Integra Investments, LLC are each licensor, and none is the Developer. Consult the Developer's Prospectus for the proposed budget, terms, conditions, specifications, fees, and unit dimensions. The Developer is not incorporated in, located in, nor a resident of, New York. This is not intended to be an offer to sell, or solicitation of an offer to buy, condominium units in New York or to residents of New York, or of any other jurisdiction where prohibited by law. 2022 © 1809 Brickell Property Owner, LLC, with all rights reserved. ©





# ST REGIS MIAMI THE RESIDENCES

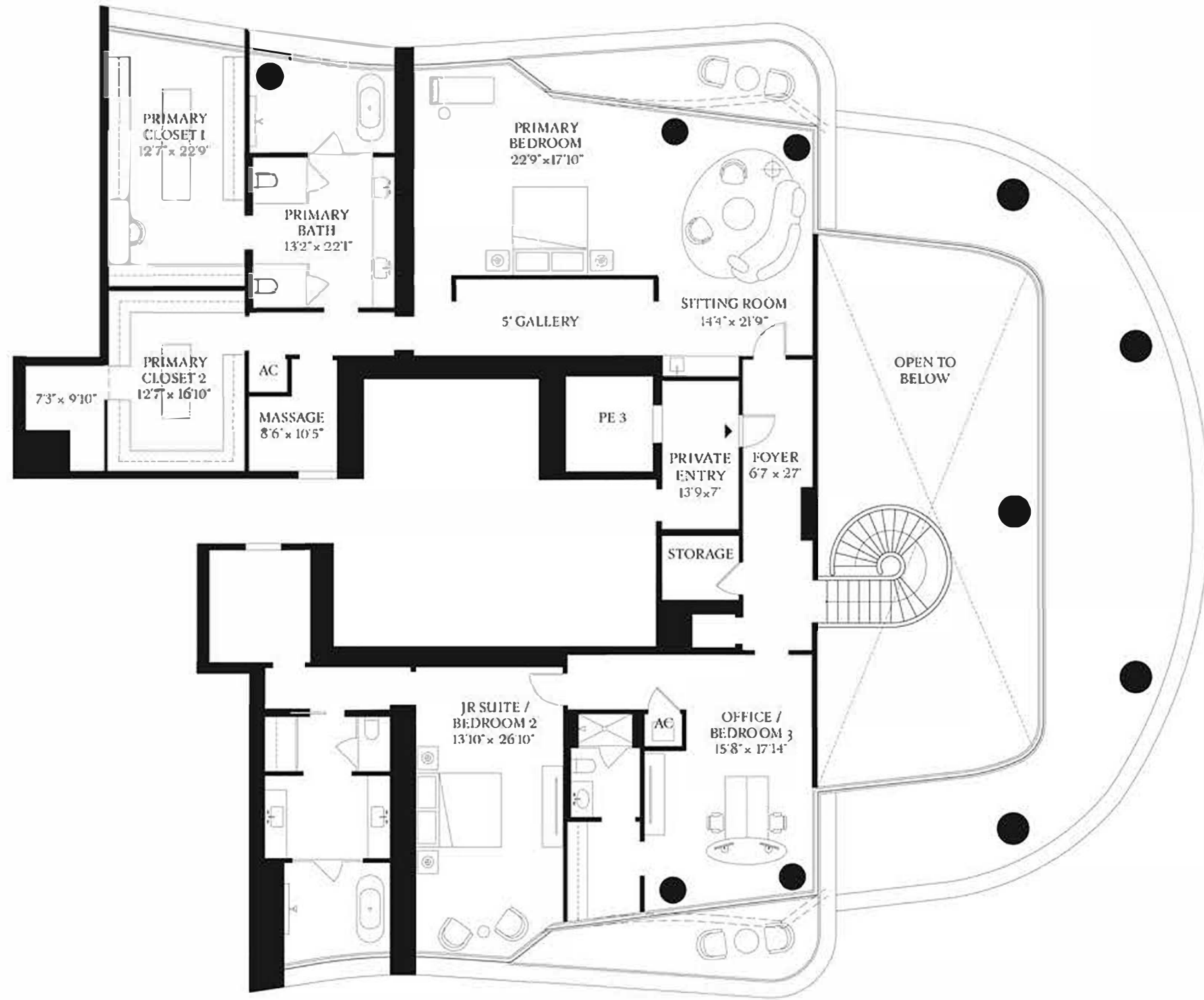
RESIDENCE

# 7A

UPPER LEVEL

EAST TOWER  
5 BEDROOMS  
6 BATHROOMS  
1 POWDER ROOM

INTERIOR  
8,373 SF | 777 SQM  
EXTERIOR  
1,312 SF | 122 SQM

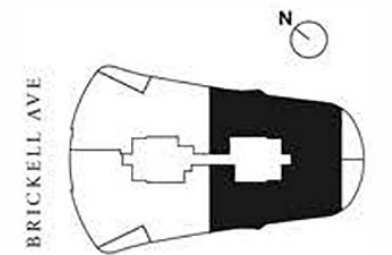


BISCAYNE BAY

1809 Brickell Avenue  
Miami, FL 33129

**ORAL REPRESENTATIONS CANNOT BE RELIED UPON AS CORRECTLY STATING REPRESENTATIONS OF THE DEVELOPER. FOR CORRECT REPRESENTATIONS, MAKE REFERENCE TO THE DOCUMENTS REQUIRED BY SECTION 718.503, FLORIDA STATUTES, TO BE FURNISHED BY A DEVELOPER TO A BUYER OR LESSEE.**

The St. Regis Residences, Miami East Tower a condominium within The St. Regis Residences, Miami (the "Condominium") is developed by 1809 Brickell Property Owner, LLC ("Developer") and this offering is made only by the Developer's Prospectus for the Condominium. Sketches, renderings, or photographs depicting lifestyle, amenities, food services, club services, rental services, hosting services, finishes, designs, materials, furnishings, fixtures, appliances, cabinetry, soffits, lighting, countertops, floor plans, specifications, or art are proposed only and the Developer reserves the right to modify, revise, or withdraw any or all of the same in its sole discretion. No specific view is guaranteed. Dimensions and square footage are approximate and may vary depending on how measured and based upon actual construction. Any art installed will be selected by the Developer at the Developer's sole discretion and shall be owned by Developer and not owned by the Condominium Association. Nearby attractions, shopping venues, restaurants, and activities referenced or depicted are off-site, are not controlled by the Developer and are not guaranteed to exist upon completion of the Condominium. All statistics referenced are based on public information available as of the date of initial marketing of the Condominium. Pursuant to license agreements Developer has a right to use the trade names, marks, and logos of: (1) St. Regis; (2) St. Regis Residences; (3) The Related Group; and (3) Integra Investments, LLC and the Developer shall continue to have the right to use each respective name and logos affiliated with each name for so long as the license agreement governing use of a name is not terminated or expired. The Association for the Condominium is required to maintain a Residential Condominium Management Agreement with Marriott International, Inc., or its successors and assigns, in order to use the names St. Regis or St. Regis Residences or the logos affiliated with these names. Marriott International, Inc. is not the Developer and is not responsible for the marketing, development, or sales of the Condominium. Marriott International, Inc., The Related Group, and Integra Investments, LLC are each licensor and none is the Developer. Consult the Developer's Prospectus for the proposed budget, terms, conditions, specifications, fees, and unit dimensions. The Developer is not incorporated in, located in, nor a resident of, New York. This is not intended to be an offer to sell, or solicitation of an offer to buy, condominium units in New York or to residents of New York, or of any other jurisdiction where prohibited by law. 2022 © 1809 Brickell Property Owner, LLC, with all rights reserved. ©





**ST. REGIS**  
MIAMI  
THE RESIDENCES

RESIDENCE

**AB**

FLOORS 21-30, 33-41

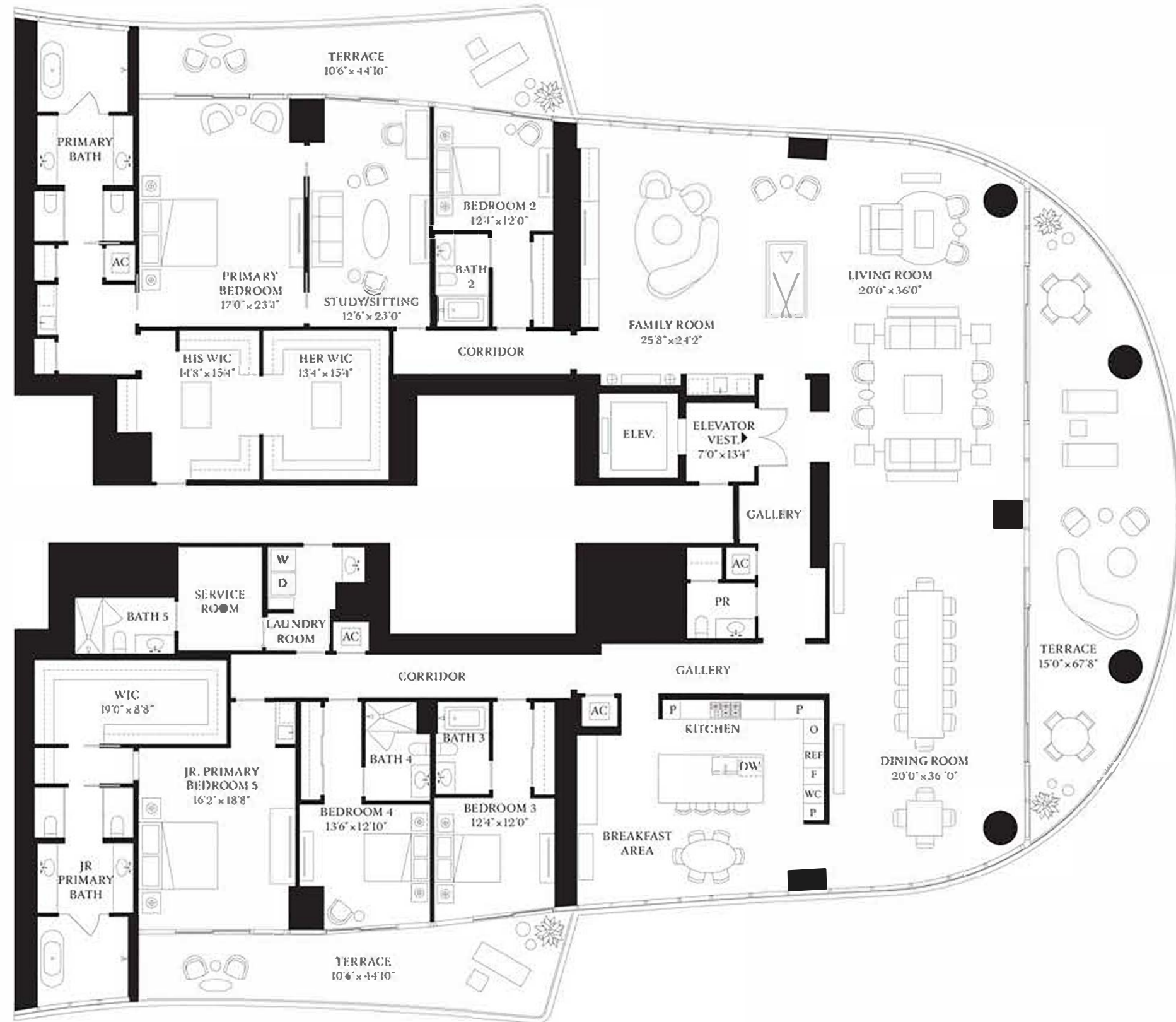
- 5 BEDROOMS
- 6 BATHROOMS
- 1 POWDER ROOM

INTERIOR

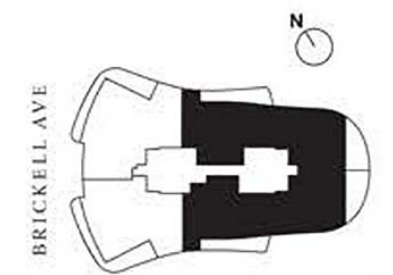
7,391 SF | 686.6 SQM

EXTERIOR

1,168 SF | 136.4 SQM



BISCAYNE BAY



The dimensions stated for this unit floor plan are approximate because there are various recognized methods for calculating the square footage of a unit. The square footage stated here is calculated from the exterior boundaries of the exterior walls to the centerline of interior demising walls without deductions for cutouts, curves, or architectural features. This method typically results in quoted dimensions greater than the dimensions that would be determined by using other accepted methods. The definition of "Unit" and the calculation method to be relied upon is set forth by the Developer in Developer's prospectus and the method set forth in the Developer's prospectus may result in a square footage calculation less than the method used here. Dimensions and unit configuration may change during construction. Consult the Developer's prospectus to understand what is offered with purchase, the calculation of the Unit square footage and dimensions. Prices are not based on the square footage no matter the method of calculation of unit dimensions and all prices are subject to change at any time. The project graphics, renderings, photographs, and text provided herein are copyrighted works owned by 1809 Brickell Property Owner, LLC 2022.



RESIDENCE

**BD**

EAST TOWER  
5 BEDROOMS  
6 BATHROOMS  
1 POWDER ROOM

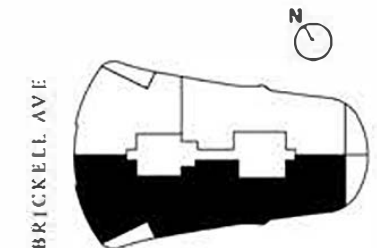
INTERIOR  
5,765 SF | 535.6 SQM  
EXTERIOR  
548 SF | 50.9 SQM



BISCAYNE BAY

ORAL REPRESENTATIONS CANNOT BE RELIED UPON AS CORRECTLY STATING REPRESENTATIONS OF THE DEVELOPER. FOR CORRECT REPRESENTATIONS, MAKE REFERENCE TO THIS BROCHURE AND THE DOCUMENTS REQUIRED BY SECTION 718.503, FLORIDA STATUTES, TO BE FURNISHED BY A DEVELOPER TO A BUYER OR LESSEE.

The St. Regis Residences, Miami East Tower a condominium within The St. Regis Residences, Miami (the "East" condominium) is developed by 1809 Brickell Property Owner, LLC whereas The St. Regis Residences, Miami West Tower (the "West" condominium) is developed by 1809 Brickell Phase II, LLC. The West is not available yet but will be soon. No specific view is guaranteed. The St. Regis Residences, Miami is not owned, developed, or sold by Marriott International, Inc. or its affiliates ("Marriott"), which has not confirmed the accuracy of any of the statements or representations made about the project by either developer. Pursuant to license agreements, each developer has a right to use the trade names, marks, and logos of Marriott's St Regis, The Related Group, and Integra Investments, LLC, each of which are licensors. Consult the respective developer's Prospectus for the proposed budget, terms, conditions, specifications, fees, and Unit dimensions.





**ST. REGIS**  
MIAMI  
THE RESIDENCES

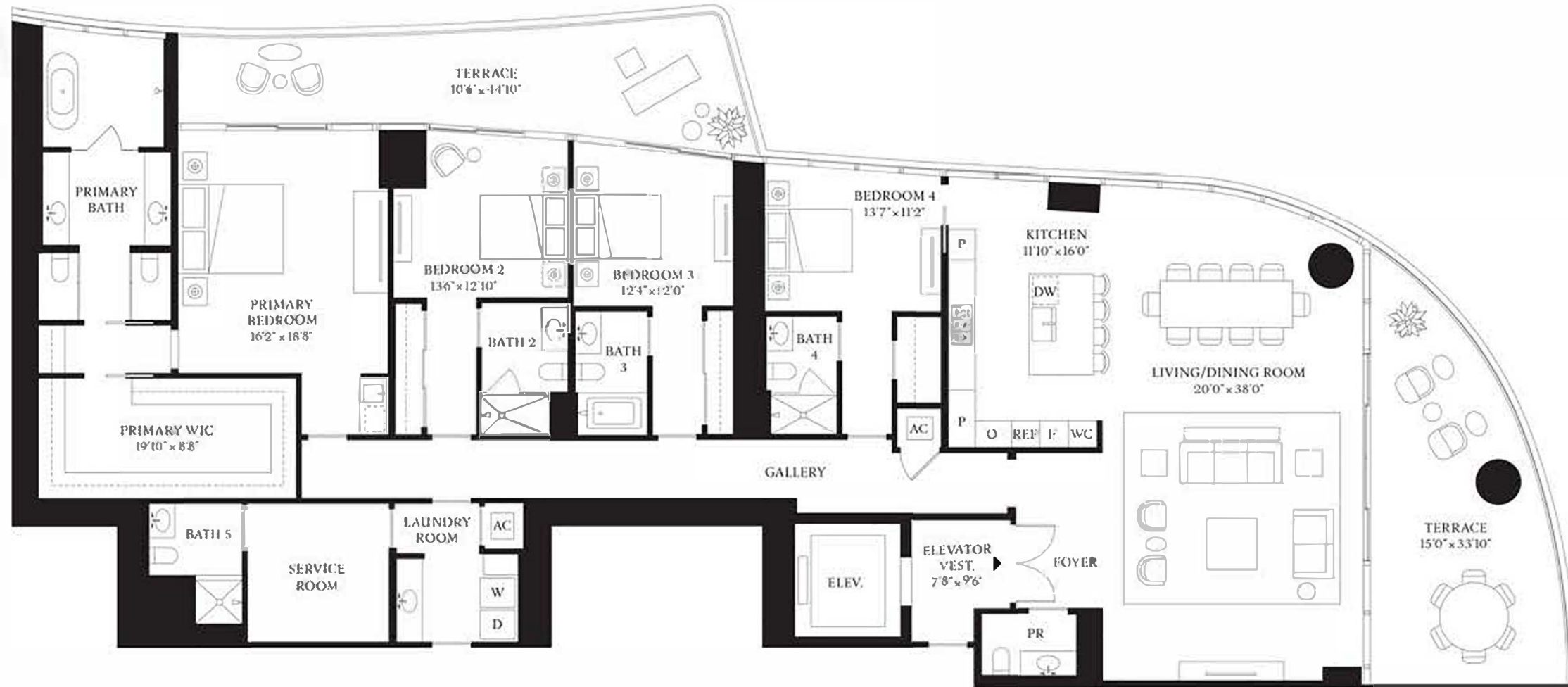
RESIDENCE

**A**

FLOORS 21-30, 33-41

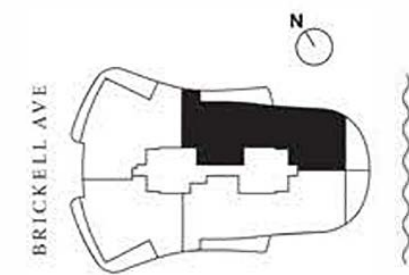
4 BEDROOMS  
5 BATHROOMS  
1 POWDER ROOM

INTERIOR  
3,712 SF | 344.9 SQM  
EXTERIOR  
734 SF | 68.2 SQM



BISCAYNE BAY

The dimensions stated for this unit floor plan are approximate because there are various recognized methods for calculating the square footage of a unit. The square footage stated here is calculated from the exterior boundaries of the exterior walls to the centerline of interior demising walls without deductions for cutouts, curves, or architectural features. This method typically results in quoted dimensions greater than the dimensions that would be determined by using other accepted methods. The definition of "Unit" and the calculation method to be relied upon is set forth by the Developer in Developer's prospectus and the method set forth in the Developer's prospectus may result in a square footage calculation less than the method used here. Dimensions and unit configuration may change during construction. Consult the Developer's prospectus to understand what is offered with purchase, the calculation of the Unit square footage and dimensions. Prices are not based on the square footage no matter the method of calculation of unit dimensions and all prices are subject to change at any time. The project graphics, renderings, photographs, and text provided herein are copyrighted works owned by 1809 Brickell Property Owner, LLC 2022.





**ST. REGIS**  
MIAMI  
THE RESIDENCES

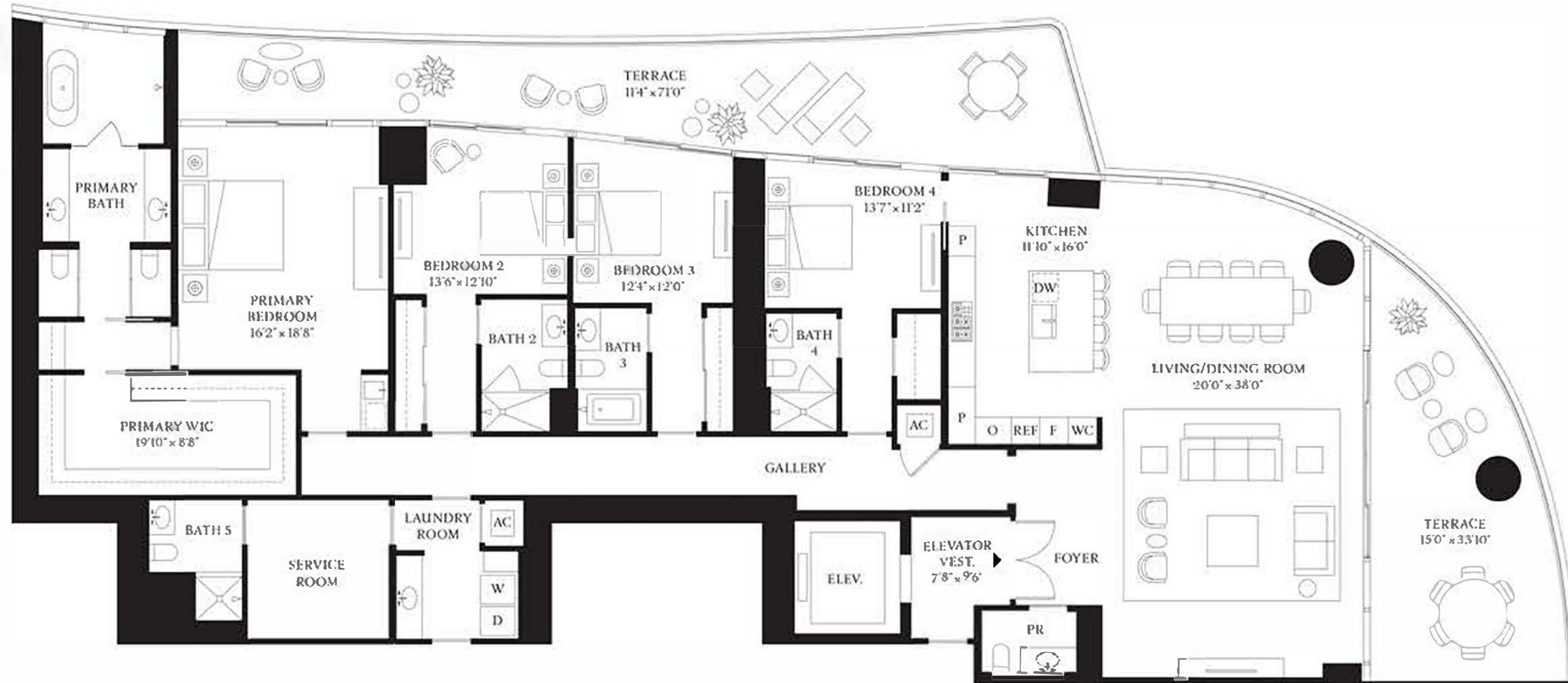
RESIDENCE

**A**

FLOORS 7-18

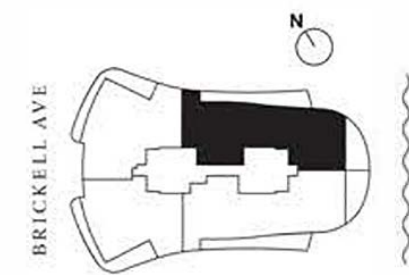
4 BEDROOMS  
5 BATHROOMS  
1 POWDER ROOM

INTERIOR  
3,712 SF | 344.9 SQM  
EXTERIOR  
941 SF | 87.4 SQM



BISCAYNE BAY

The dimensions stated for this unit floor plan are approximate because there are various recognized methods for calculating the square footage of a unit. The square footage stated here is calculated from the exterior boundaries of the exterior walls to the centerline of interior demising walls without deductions for cutouts, curves, or architectural features. This method typically results in quoted dimensions greater than the dimensions that would be determined by using other accepted methods. The definition of "Unit" and the calculation method to be relied upon is set forth by the Developer in Developer's prospectus and the method set forth in the Developer's prospectus may result in a square footage calculation less than the method used here. Dimensions and unit configuration may change during construction. Consult the Developer's prospectus to understand what is offered with purchase, the calculation of the Unit square footage and dimensions. Prices are not based on the square footage no matter the method of calculation of unit dimensions and all prices are subject to change at any time. The project graphics, renderings, photographs, and text provided herein are copyrighted works owned by 1809 Brickell Property Owner, LLC 2022.





**ST. REGIS**  
MIAMI  
THE RESIDENCES

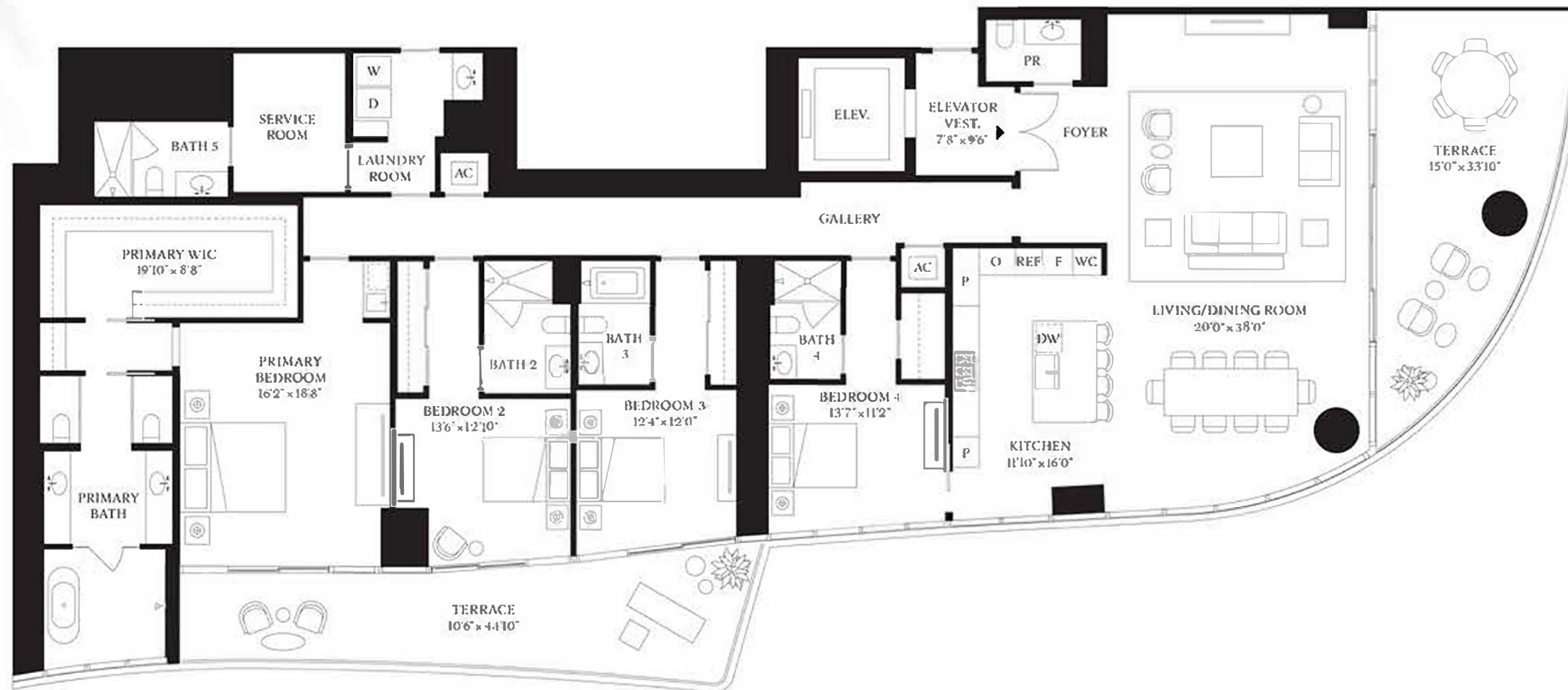
RESIDENCE

**B**

FLOORS 21-30, 33-41

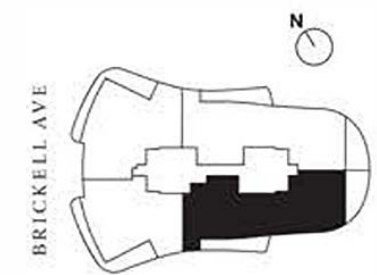
4 BEDROOMS  
5 BATHROOMS  
1 POWDER ROOM

INTERIOR  
3,679 SF | 341.8 SQM  
EXTERIOR  
734 SF | 68.2 SQM



BISCAYNE BAY

The dimensions stated for this unit floor plan are approximate because there are various recognized methods for calculating the square footage of a unit. The square footage stated here is calculated from the exterior boundaries of the exterior walls to the centerline of interior demising walls without deductions for cutouts, curves, or architectural features. This method typically results in quoted dimensions greater than the dimensions that would be determined by using other accepted methods. The definition of "Unit" and the calculation method to be relied upon is set forth by the Developer in Developer's prospectus and the method set forth in the Developer's prospectus may result in a square footage calculation less than the method used here. Dimensions and unit configuration may change during construction. Consult the Developer's prospectus to understand what is offered with purchase, the calculation of the Unit square footage and dimensions. Prices are not based on the square footage no matter the method of calculation of unit dimensions and all prices are subject to change at any time. The project graphics, renderings, photographs, and text provided herein are copyrighted works owned by 1809 Brickell Property Owner, LLC 2022.





**ST. REGIS**  
MIAMI  
THE RESIDENCES

RESIDENCE

**B**

FLOORS 7-18

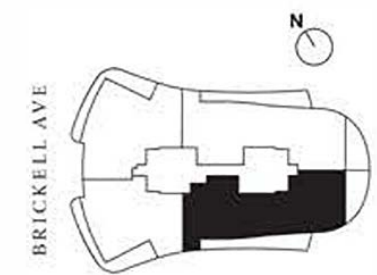
4 BEDROOMS  
5 BATHROOMS  
1 POWDER ROOM

INTERIOR  
3,679 SF | 341.8 SQM  
EXTERIOR  
941 SF | 87.4 SQM



BISCAYNE BAY

The dimensions stated for this unit floor plan are approximate because there are various recognized methods for calculating the square footage of a unit. The square footage stated here is calculated from the exterior boundaries of the exterior walls to the centerline of interior demising walls without deductions for cutouts, curves, or architectural features. This method typically results in quoted dimensions greater than the dimensions that would be determined by using other accepted methods. The definition of "Unit" and the calculation method to be relied upon is set forth by the Developer in Developer's prospectus and the method set forth in the Developer's prospectus may result in a square footage calculation less than the method used here. Dimensions and unit configuration may change during construction. Consult the Developer's prospectus to understand what is offered with purchase, the calculation of the Unit square footage and dimensions. Prices are not based on the square footage no matter the method of calculation of unit dimensions and all prices are subject to change at any time. The project graphics, renderings, photographs, and text provided herein are copyrighted works owned by 1809 Brickell Property Owner, LLC 2022.





**ST. REGIS**  
MIAMI  
THE RESIDENCES

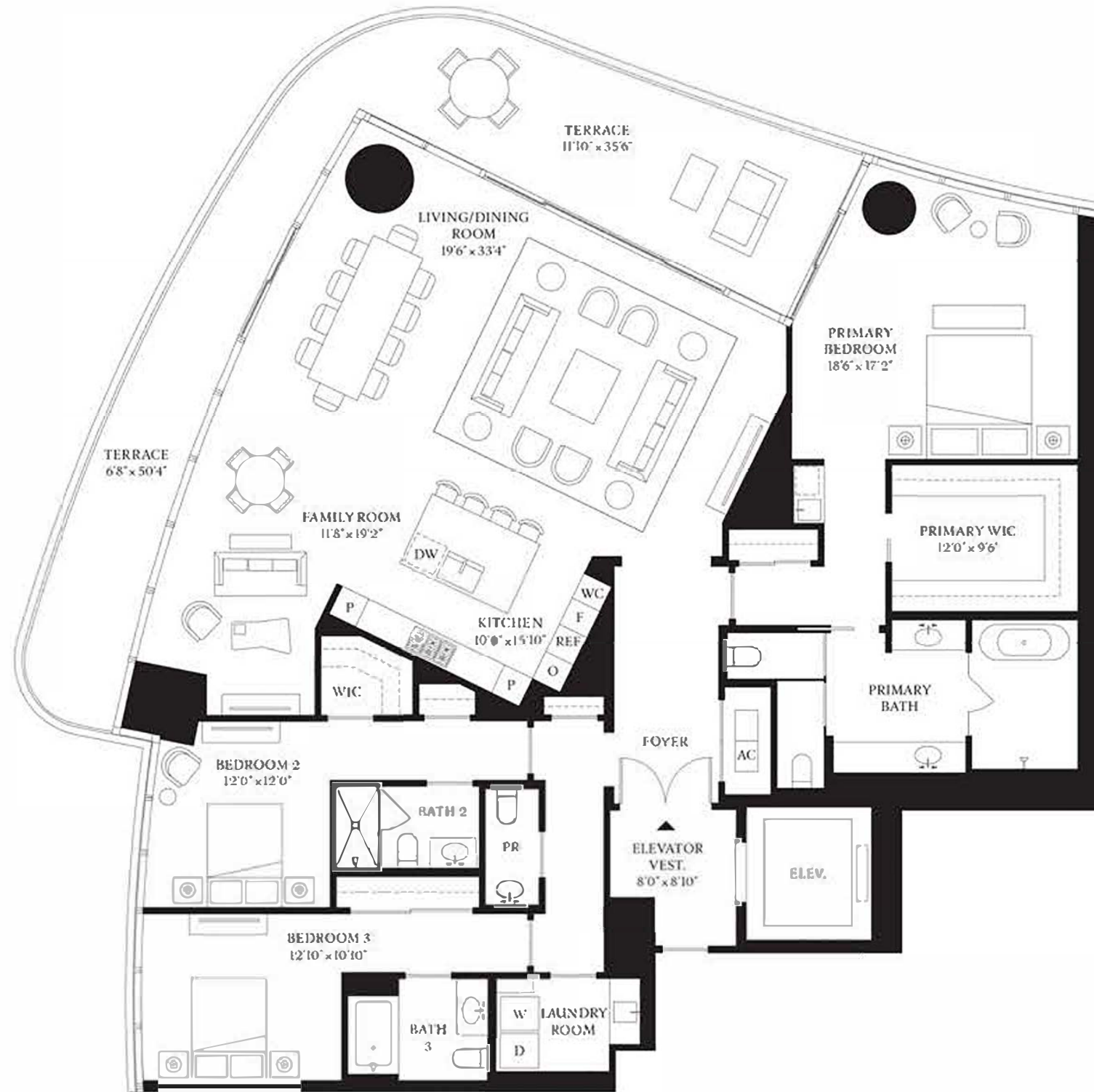
RESIDENCE

**C**

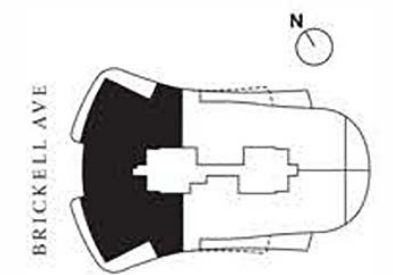
FLOORS 7-18, 21-30, 33-41

3 BEDROOMS  
3 BATHROOMS  
1 POWDER ROOM

INTERIOR  
2,987 SF | 277.5 SQM  
EXTERIOR  
590 SF | 54.8 SQM



BISCAYNE BAY



The dimensions stated for this unit floor plan are approximate because there are various recognized methods for calculating the square footage of a unit. The square footage stated here is calculated from the exterior boundaries of the exterior walls to the centerline of interior demising walls without deductions for cutouts, curves, or architectural features. This method typically results in quoted dimensions greater than the dimensions that would be determined by using other accepted methods. The definition of "Unit" and the calculation method to be relied upon is set forth by the Developer in Developer's prospectus and the method set forth in the Developer's prospectus may result in a square footage calculation less than the method used here. Dimensions and unit configuration may change during construction. Consult the Developer's prospectus to understand what is offered with purchase, the calculation of the Unit square footage and dimensions. Prices are not based on the square footage no matter the method of calculation of unit dimensions and all prices are subject to change at any time. The project graphics, renderings, photographs, and text provided herein are copyrighted works owned by 1809 Brickell Property Owner, LLC 2022.



**ST. REGIS**  
MIAMI  
THE RESIDENCES

RESIDENCE

**D**

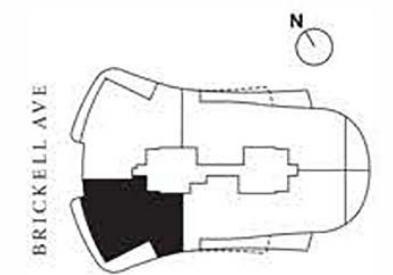
FLOORS 7-18, 21-30, 33-41

2 BEDROOMS  
3 BATHROOMS  
1 POWDER ROOM

INTERIOR  
2,616 SF | 243 SQM  
EXTERIOR  
590 SF | 54.8 SQM



BISCAYNE BAY



The dimensions stated for this unit floor plan are approximate because there are various recognized methods for calculating the square footage of a unit. The square footage stated here is calculated from the exterior boundaries of the exterior walls to the centerline of interior demising walls without deductions for cutouts, curves, or architectural features. This method typically results in quoted dimensions greater than the dimensions that would be determined by using other accepted methods. The definition of "Unit" and the calculation method to be relied upon is set forth by the Developer in Developer's prospectus and the method set forth in the Developer's prospectus may result in a square footage calculation less than the method used here. Dimensions and unit configuration may change during construction. Consult the Developer's prospectus to understand what is offered with purchase, the calculation of the Unit square footage and dimensions. Prices are not based on the square footage no matter the method of calculation of unit dimensions and all prices are subject to change at any time. The project graphics, renderings, photographs, and text provided herein are copyrighted works owned by 1809 Brickell Property Owner, LLC 2022.



**ST REGIS**  
MIAMI  
THE RESIDENCES

**43C**

Future residences located at  
1809 Brickell Avenue  
Miami, Florida 33129

 **RELATED**  **INTEGRA**

**THE ASTOR TOWER**

3 BEDROOMS | 4 BATHROOMS | 1 POWDER ROOM  
INTERIOR: 3,325 SF | 308.9 SQM EXTERIOR: 224 SF | 20.8 SQM

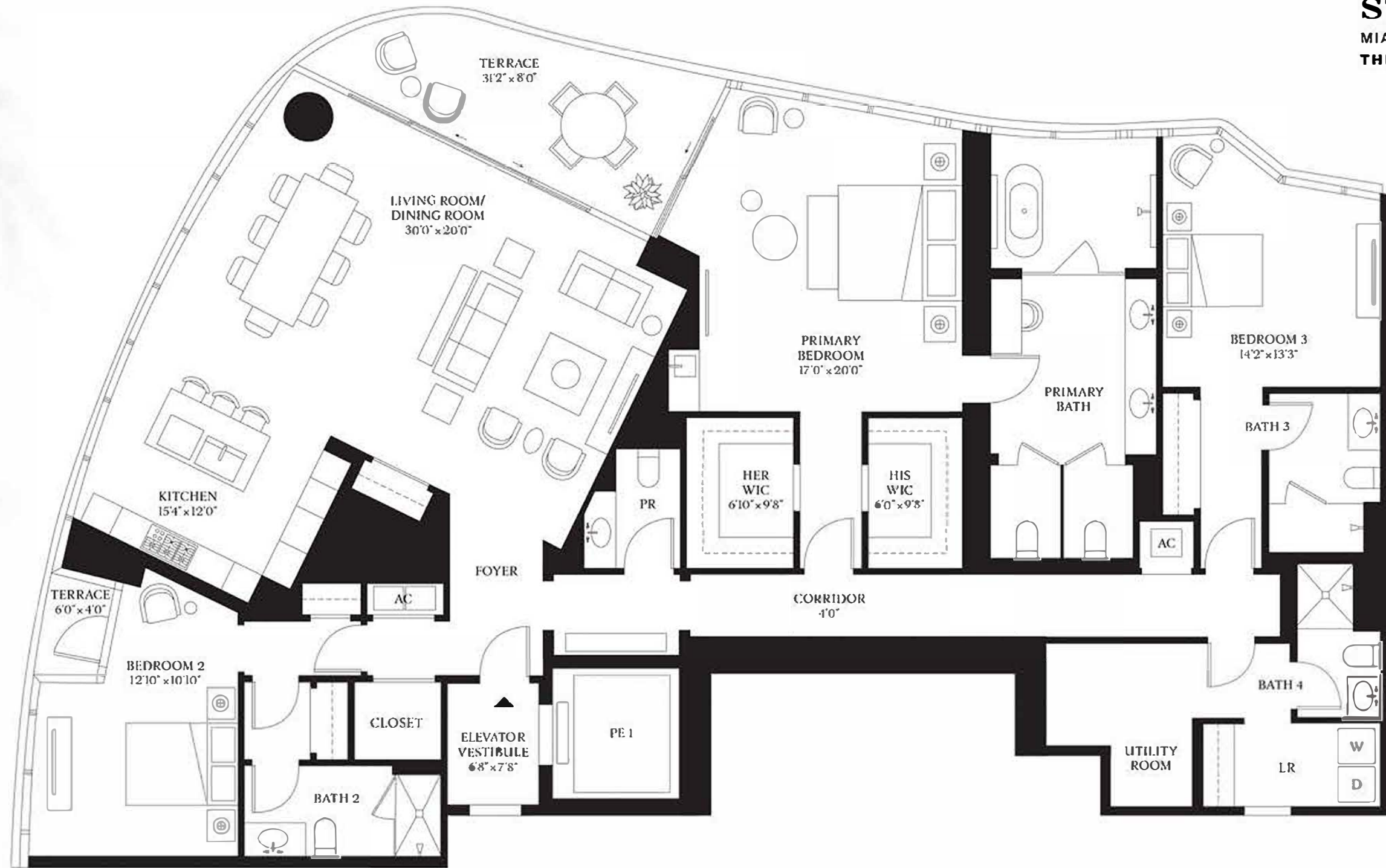


**ST REGIS**  
MIAMI  
THE RESIDENCES

RESIDENCE  
**43C**

EAST TOWER  
3 BEDROOMS  
4 BATHROOMS  
1 POWDER ROOM

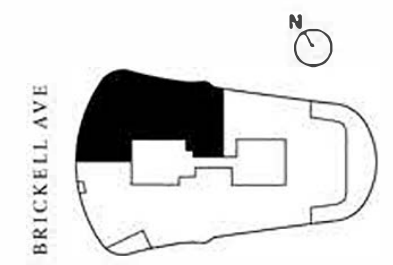
INTERIOR  
3,325 SF | 308.9 SQM  
EXTERIOR  
224 SF | 20.8 SQM



BISCAYNE BAY

ORAL REPRESENTATIONS CANNOT BE RELIED UPON AS CORRECTLY STATING REPRESENTATIONS OF THE DEVELOPER. FOR CORRECT REPRESENTATIONS, MAKE REFERENCE TO THIS BROCHURE AND THE DOCUMENTS REQUIRED BY SECTION 718.503, FLORIDA STATUTES, TO BE FURNISHED BY A DEVELOPER TO A BUYER OR LESSEE.

The St. Regis Residences, Miami East Tower a condominium within The St. Regis Residences, Miami (the "East" condominium) is developed by 1809 Brickell Property Owner, LLC whereas The St. Regis Residences, Miami West Tower (the "West" condominium) is developed by 1809 Brickell Phase II, LLC. The West is not available yet but will be soon. No specific view is guaranteed. The St. Regis Residences, Miami is not owned, developed, or sold by Marriott International, Inc. or its affiliates ("Marriott"), which has not confirmed the accuracy of any of the statements or representations made about the project by either developer. Pursuant to license agreements, each developer has a right to use the trade names, marks, and logos of Marriott's St Regis, The Related Group, and Integra Investments, LLC, each of which are licensors. Consult the respective developer's Prospectus for the proposed budget, terms, conditions, specifications, fees, and Unit dimensions.





**ST REGIS**  
MIAMI  
THE RESIDENCES

# 43D

Future residences located at  
1809 Brickell Avenue  
Miami, Florida 33129

 **RELATED**  **INTEGRA**

**THE ASTOR TOWER**

3 BEDROOMS | 3 BATHROOMS | 1 POWDER ROOM  
INTERIOR: 3,294 SF | 306.0 SQM EXTERIOR: 224 SF | 20.8 SQM



RESIDENCE

43D

EAST TOWER  
3 BEDROOMS  
3 BATHROOMS  
1 POWDER ROOM

INTERIOR  
3,294 SF | 306.0 SQM  
EXTERIOR  
224 SF | 20.8 SQM



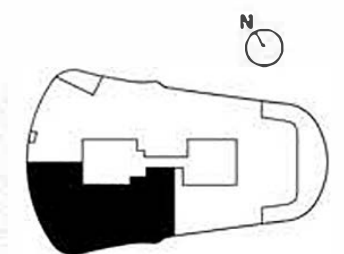
**ST REGIS**  
MIAMI  
THE RESIDENCES

BISCAYNE BAY

ORAL REPRESENTATIONS CANNOT BE RELIED UPON AS CORRECTLY STATING REPRESENTATIONS OF THE DEVELOPER. FOR CORRECT REPRESENTATIONS, MAKE REFERENCE TO THIS BROCHURE AND THE DOCUMENTS REQUIRED BY SECTION 718.503, FLORIDA STATUTES, TO BE FURNISHED BY A DEVELOPER TO A BUYER OR LESSEE.

The St. Regis Residences, Miami East Tower a condominium within The St. Regis Residences, Miami (the "East" condominium) is developed by 1809 Brickell Property Owner, LLC whereas The St. Regis Residences, Miami West Tower (the "West" condominium) is developed by 1809 Brickell Phase II, LLC. The West is not available yet but will be soon. No specific view is guaranteed. The St. Regis Residences, Miami is not owned, developed, or sold by Marriott International, Inc. or its affiliates ("Marriott"), which has not confirmed the accuracy of any of the statements or representations made about the project by either developer. Pursuant to license agreements, each developer has a right to use the trade names, marks, and logos of Marriott's St Regis, The Related Group, and Integra Investments, LLC, each of which are licensors. Consult the respective developer's Prospectus for the proposed budget, terms, conditions, specifications, fees, and Unit dimensions.

BRICKELL AVE





**ST REGIS**  
MIAMI  
THE RESIDENCES

**45A**

Future residences located at  
1809 Brickell Avenue  
Miami, Florida 33129

 **RELATED**  **INTEGRA**

**THE ASTOR TOWER**

5 BEDROOMS | 5 BATHROOMS | 1 POWDER ROOM  
INTERIOR: 5,013 SF | 465.7 SQM EXTERIOR: 1,325 SF | 123.1 SQM



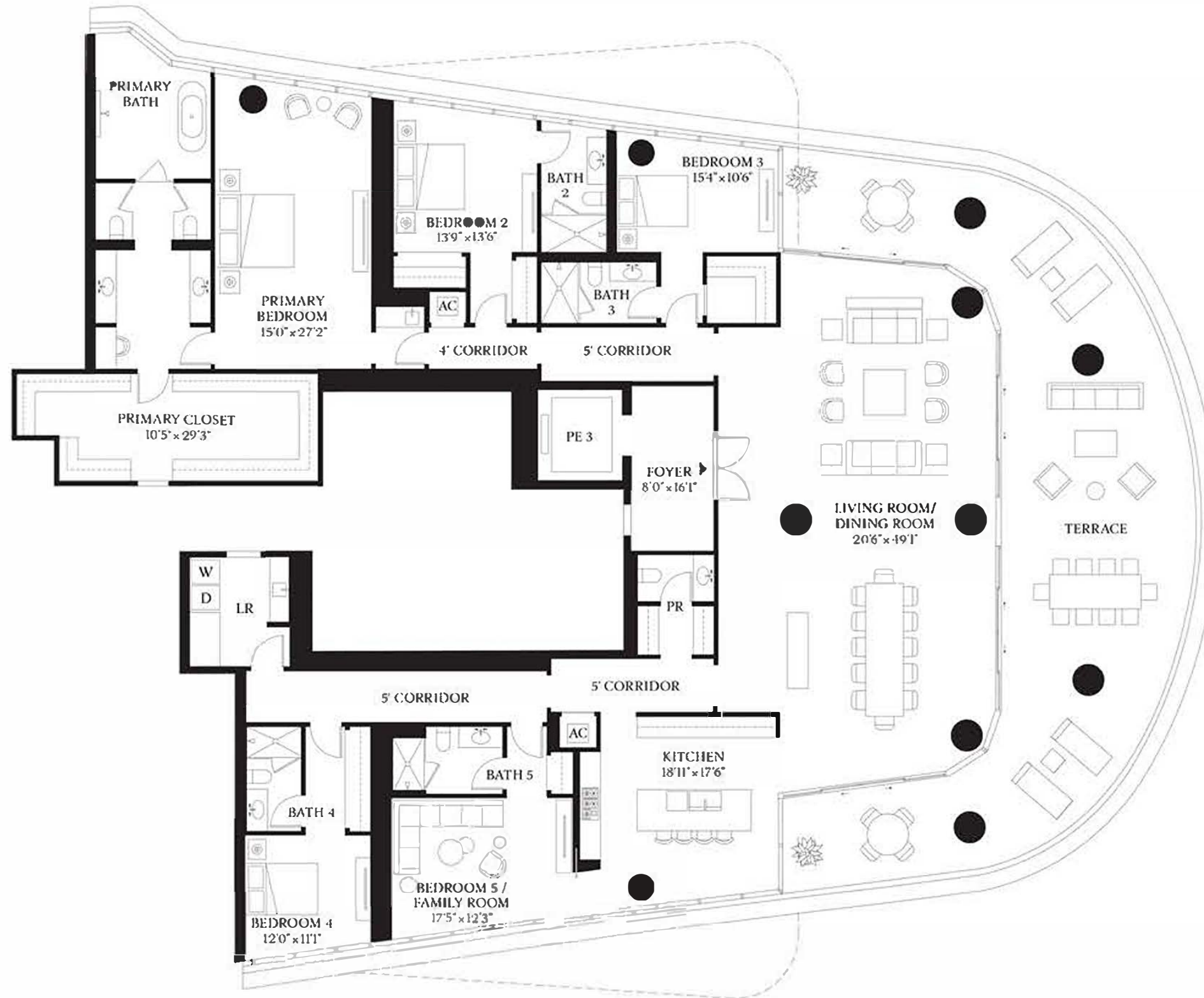
**ST REGIS**  
MIAMI  
THE RESIDENCES

RESIDENCE

**45A**

EAST TOWER  
5 BEDROOMS  
5 BATHROOMS  
1 POWDER ROOM

INTERIOR  
5,013 SF | 465.7 SQM  
EXTERIOR  
1,325 SF | 123.1 SQM

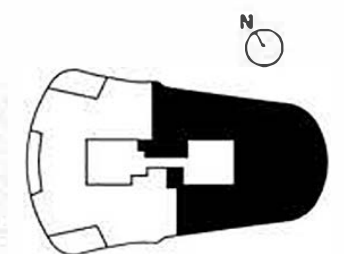


BISCAYNE BAY

ORAL REPRESENTATIONS CANNOT BE RELIED UPON AS CORRECTLY STATING REPRESENTATIONS OF THE DEVELOPER. FOR CORRECT REPRESENTATIONS, MAKE REFERENCE TO THIS BROCHURE AND THE DOCUMENTS REQUIRED BY SECTION 718.503, FLORIDA STATUTES, TO BE FURNISHED BY A DEVELOPER TO A BUYER OR LESSEE.

The St. Regis Residences, Miami East Tower a condominium within The St. Regis Residences, Miami (the "East" condominium) is developed by 1809 Brickell Property Owner, LLC whereas The St. Regis Residences, Miami West Tower (the "West" condominium) is developed by 1809 Brickell Phase II, LLC. The West is not available yet but will be soon. No specific view is guaranteed. The St. Regis Residences, Miami is not owned, developed, or sold by Marriott International, Inc. or its affiliates ("Marriott"), which has not confirmed the accuracy of any of the statements or representations made about the project by either developer. Pursuant to license agreements, each developer has a right to use the trade names, marks, and logos of Marriott's St Regis, The Related Group, and Integra Investments, LLC, each of which are licensors. Consult the respective developer's Prospectus for the proposed budget, terms, conditions, specifications, fees, and Unit dimensions.

BRICKELL AVE





**ST REGIS**  
MIAMI  
THE RESIDENCES

**45C**

Future residences located at  
1809 Brickell Avenue  
Miami, Florida 33129

 **RELATED**  **INTEGRA**

**THE ASTOR TOWER**

2 BEDROOMS | 2 BATHROOMS | 1 POWDER ROOM  
INTERIOR: 2,656 SF | 246.8 SQM EXTERIOR: 224 SF | 20.8 SQM



# ST REGIS MIAMI THE RESIDENCES

RESIDENCE

## 45C

EAST TOWER  
2 BEDROOMS  
2 BATHROOMS  
1 POWDER ROOM

INTERIOR  
2,656 SF | 246.8 SQM  
EXTERIOR  
224 SF | 20.8 SQM

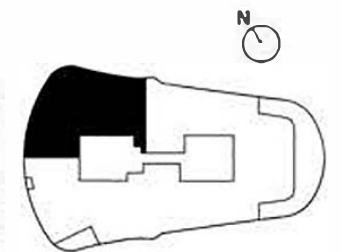


BISCAYNE BAY

ORAL REPRESENTATIONS CANNOT BE RELIED UPON AS CORRECTLY STATING REPRESENTATIONS OF THE DEVELOPER. FOR CORRECT REPRESENTATIONS, MAKE REFERENCE TO THIS BROCHURE AND THE DOCUMENTS REQUIRED BY SECTION 718.503, FLORIDA STATUTES, TO BE FURNISHED BY A DEVELOPER TO A BUYER OR LESSEE.

The St. Regis Residences, Miami East Tower a condominium within The St. Regis Residences, Miami (the "East" condominium) is developed by 1809 Brickell Property Owner, LLC whereas The St. Regis Residences, Miami West Tower (the "West" condominium) is developed by 1809 Brickell Phase II, LLC. The West is not available yet but will be soon. No specific view is guaranteed. The St. Regis Residences, Miami is not owned, developed, or sold by Marriott International, Inc. or its affiliates ("Marriott"), which has not confirmed the accuracy of any of the statements or representations made about the project by either developer. Pursuant to license agreements, each developer has a right to use the trade names, marks, and logos of Marriott's St Regis, The Related Group, and Integra Investments, LLC, each of which are licensors. Consult the respective developer's Prospectus for the proposed budget, terms, conditions, specifications, fees, and Unit dimensions.

BRICKELL AVE





**ST. REGIS**  
MIAMI  
THE RESIDENCES

RESIDENCE

**AB**

FLOORS 7-18

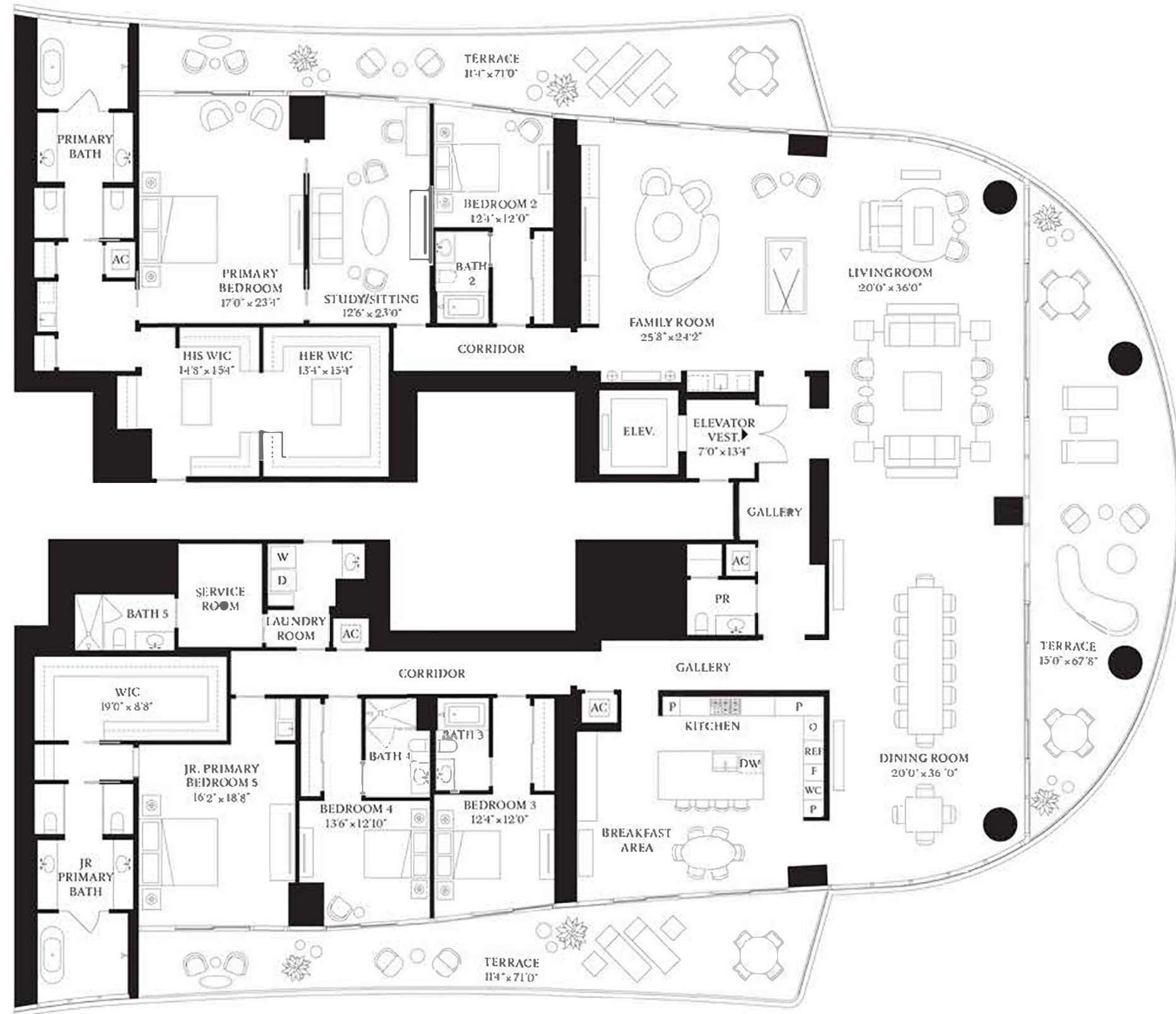
- 5 BEDROOMS
- 6 BATHROOMS
- 1 POWDER ROOM

INTERIOR

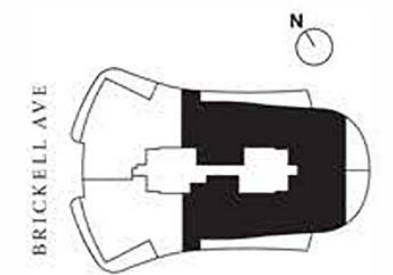
7,391 SF | 686.6 SQM

EXTERIOR

1,882 SF | 174.8 SQM



BISCAYNE BAY



The dimensions stated for this unit floor plan are approximate because there are various recognized methods for calculating the square footage of a unit. The square footage stated here is calculated from the exterior boundaries of the exterior walls to the centerline of interior demising walls without deductions for cutouts, curves, or architectural features. This method typically results in quoted dimensions greater than the dimensions that would be determined by using other accepted methods. The definition of "Unit" and the calculation method to be relied upon is set forth by the Developer in Developer's prospectus and the method set forth in the Developer's prospectus may result in a square footage calculation less than the method used here. Dimensions and unit configuration may change during construction. Consult the Developer's prospectus to understand what is offered with purchase, the calculation of the Unit square footage and dimensions. Prices are not based on the square footage no matter the method of calculation of unit dimensions and all prices are subject to change at any time. The project graphics, renderings, photographs, and text provided herein are copyrighted works owned by 1809 Brickell Property Owner, LLC 2022.