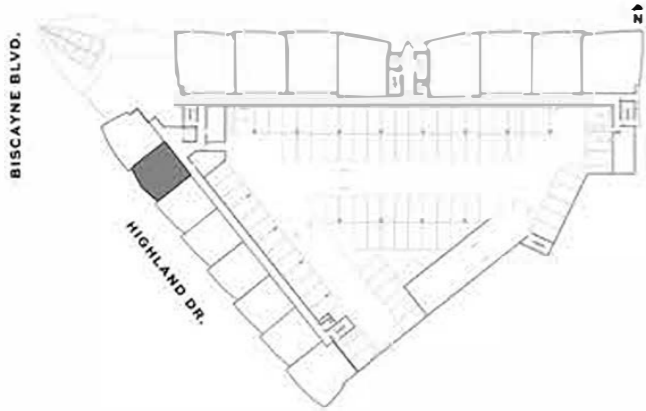
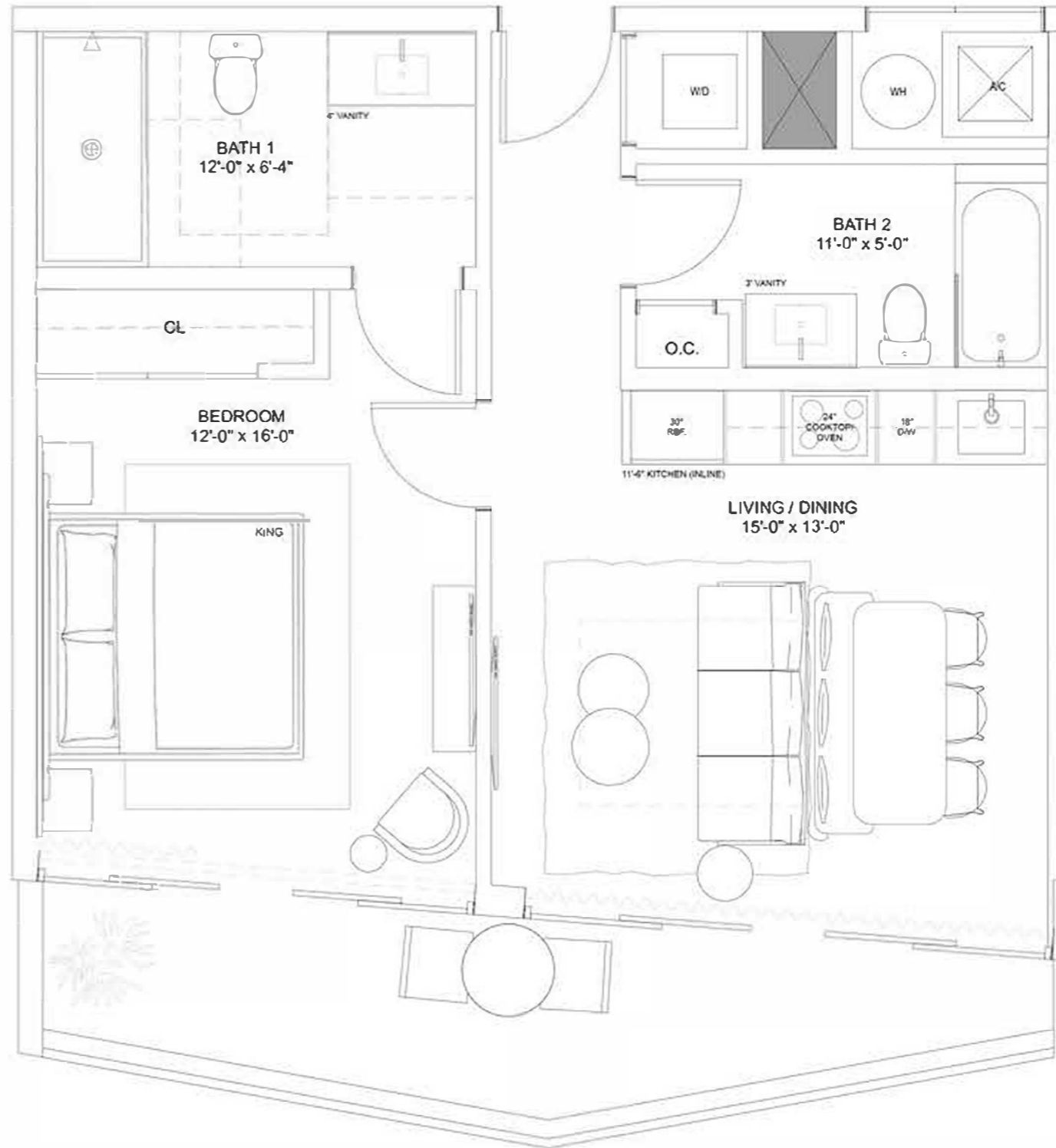


Residence F

ONE-BEDROOM / TWO-BATHROOMS

Levels 3 & 4

INTERIOR	682 S.F.	63.4 S.M.
TERRACE	136 S.F.	12.6 S.M.
TOTAL	818 S.F.	76 S.M.



NEXO
RESIDENCES
NORTH MIAMI BEACH

12/20/2021



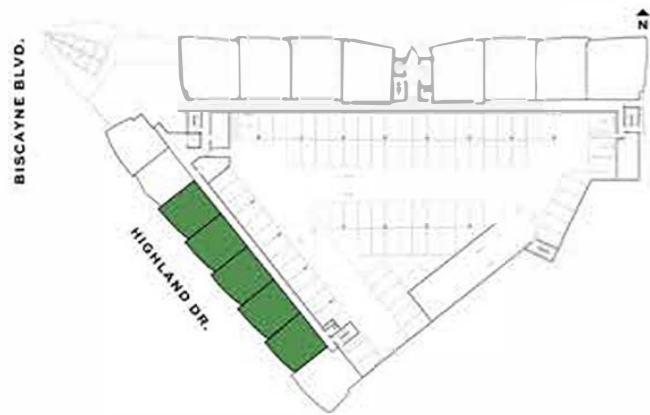
ORAL REPRESENTATIONS CANNOT BE RELIED UPON AS CORRECTLY STATING REPRESENTATIONS OF THE DEVELOPER FOR CORRECT REPRESENTATIONS. MAKE REFERENCE TO THE DOCUMENTS THAT ARE REQUIRED BY SECTION 718.603, FLORIDA STATUTES, TO BE FURNISHED BY A DEVELOPER TO A BUYER OR LESSEE. The Developer is 12899 Biscayne Associates, LLC, which has a right to use the trademark names and logos of Fortune International Group and Blue Road LLC. This is not an offer to sell, or solicitation of offers to buy, in states where such offer or solicitation cannot be made. Stated square footages and dimensions are measured to the exterior boundaries of the exterior walls and the centerline of interior demarcating walls and in fact vary from the square footage and dimensions that would be determined by using the description and definition of the "Unit" set forth in the Declaration (which generally only includes the interior airspace between the perimeter walls and excludes all interior structural components and other common elements). This method is generally used in sales materials and is provided to allow a prospective buyer to compare the Units with units in other condominium projects that utilize the same method. For your reference, the area of the Unit, determined in accordance with these defined unit boundaries, is xxx sqft. Measurements of rooms set forth on this floor plan are generally taken at the farthest points of each given room (as if the room were a perfect rectangle), without regard for any cutouts or variations. Accordingly, the area of the actual room will typically be smaller than the product obtained by multiplying the stated length and width. All dimensions are estimates which will vary with actual construction, and all floor plans, specifications and other development plans are subject to change and will not necessarily accurately reflect the final plans and specifications for the development. All depictions of appliances, counters, soffits, floor coverings and other matters of detail, including, without limitation, items of finish and decoration, are conceptual only and are not necessarily included in each Unit.

Residence G

ONE-BEDROOM / TWO-BATHROOMS

Levels 3 & 4

INTERIOR	682 S.F.	63.4 S.M.
TERRACE	136 S.F.	12.6 S.M.
TOTAL	818 S.F.	76 S.M.



NEXO
RESIDENCES
NORTH MIAMI BEACH

10/15/2024



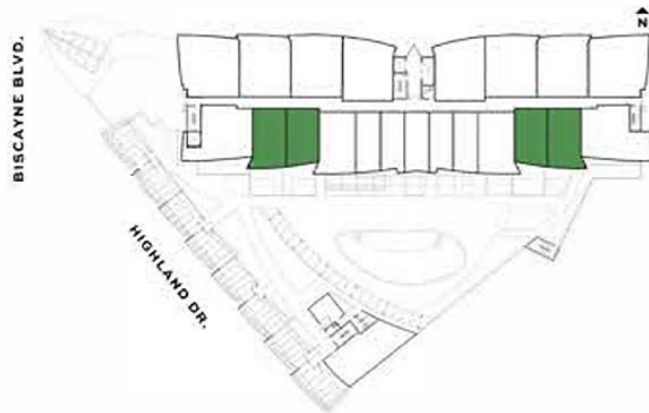
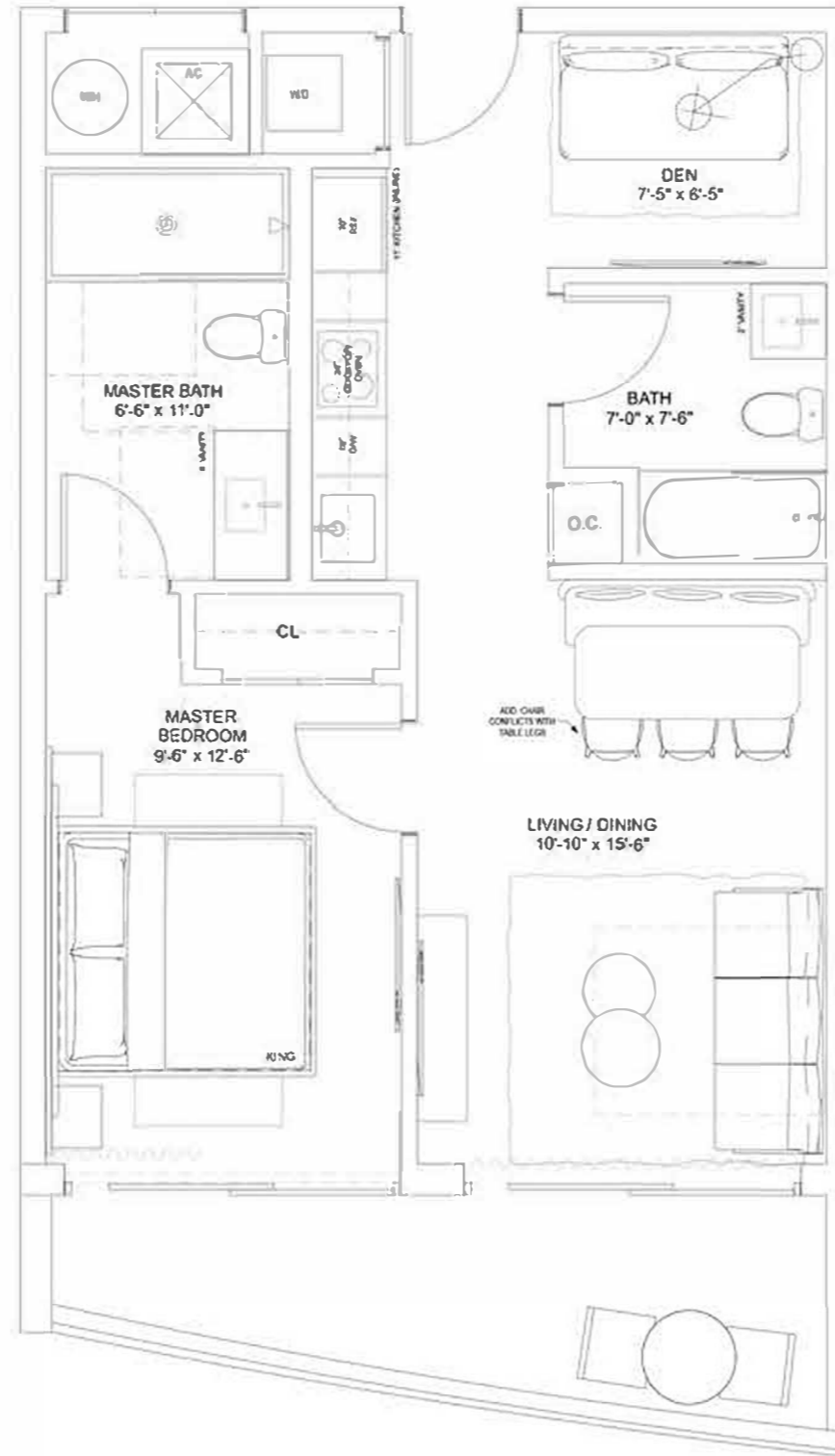
ORAL REPRESENTATIONS CANNOT BE RELIED UPON AS CORRECTLY STATING REPRESENTATIONS OF THE DEVELOPER. FOR CORRECT REPRESENTATIONS, MAKE REFERENCE TO THE DOCUMENTS THAT ARE REQUIRED BY SECTION 718.603, FLORIDA STATUTES, TO BE FURNISHED BY A DEVELOPER TO A BUYER OR LESSEE. The Developer is 13000 Biscayne Associates, LLC, which has a right to use the trademarks and logos of Fortune International Group and Blue Road LLC. This is not an offer to sell, or solicitation of offers to buy, in states where such offer or solicitation cannot be made. Stated square footages and dimensions are measured to the exterior boundaries of the exterior walls and the centerline of interior demarcating walls and in fact may vary from the square footage and dimensions that would be determined by using the description and definition of the "Unit" set forth in the Declaration (which generally only includes the interior airspace between the perimeter walls and excludes all interior structural components and other common elements). This method is generally used in sales materials and is provided to allow a prospective buyer to compare the plans with units in other condominium projects that utilize the same method. For your reference, the area of the Unit, determined in accordance with these defined unit boundaries, is xxx sqft. Measurements of rooms set forth on this floor plan are generally taken at the furthest points of each given room (as if the room were a perfect rectangle), without regard for any cutouts or variations. Accordingly, the area of the actual room will typically be smaller than the product obtained by multiplying the stated length and width. All dimensions are estimates which will vary with actual construction, and all floor plans, specifications and other development plans are subject to change and will not necessarily accurately reflect the final plans and specifications for the development. All depictions of appliances, counters, soffits, floor coverings and other matters of detail, including, without limitation, items of finish and decoration, are conceptual only and are not necessarily included in each Unit.

Residence M

ONE-BEDROOM + DEN / TWO-BATHROOMS

Levels 6 thru 15

INTERIOR	679 S.F.	63.1 S.M.
TERRACE	100 S.F.	9.3 S.M.
TOTAL	779 S.F.	72.4 S.M.



NEXO
RESIDENCES
NORTH MIAMI BEACH

SECTION 04



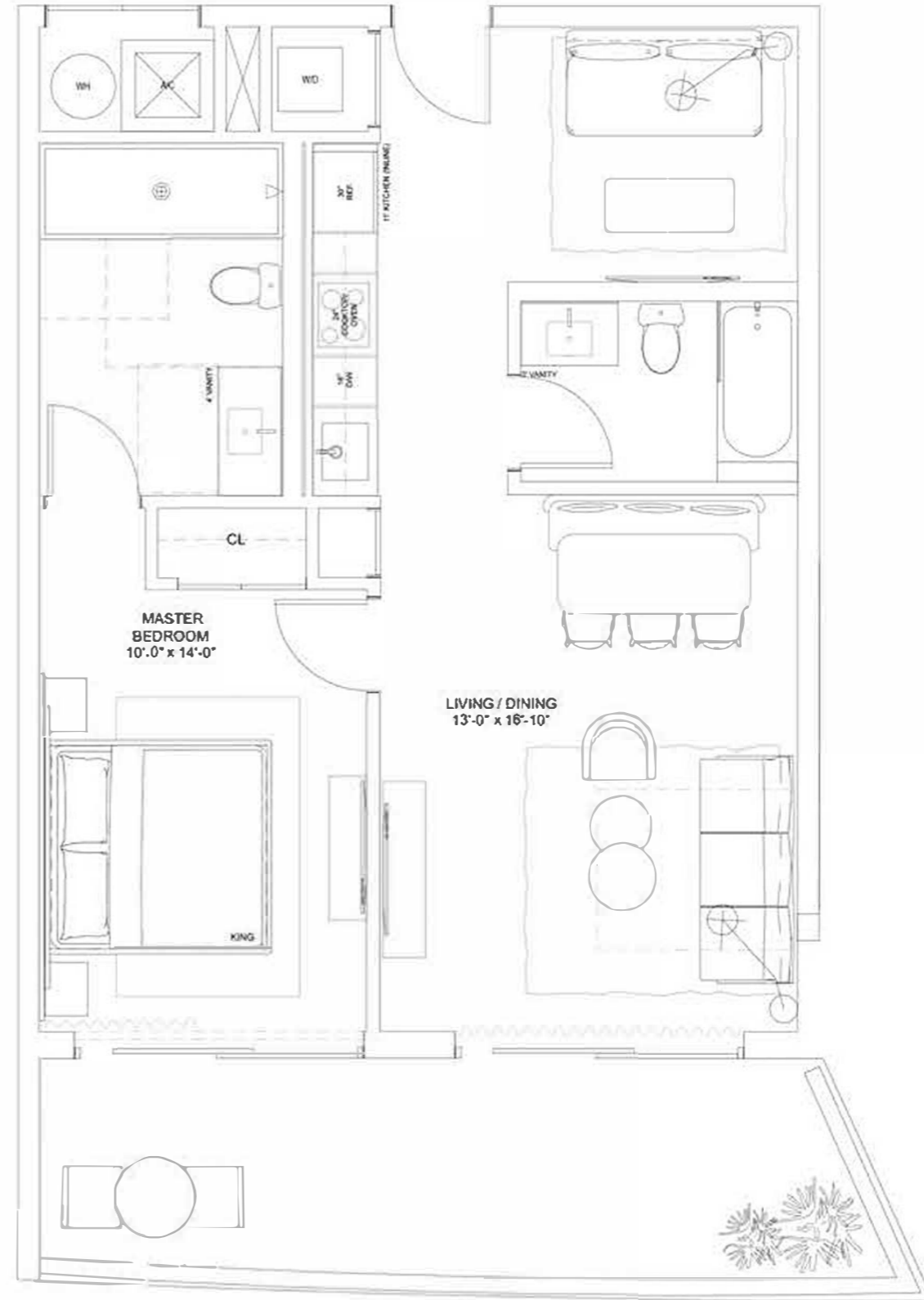
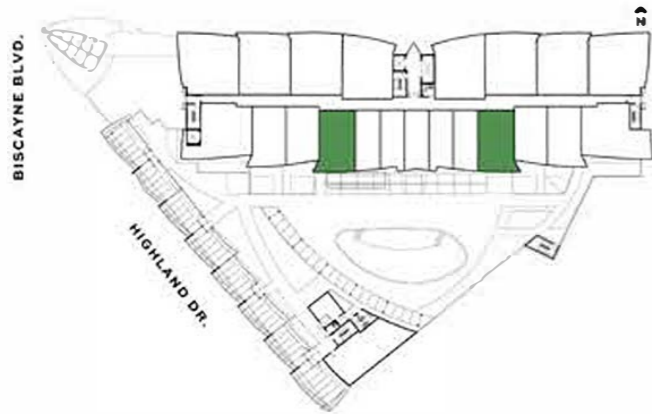
ORAL REPRESENTATIONS CANNOT BE RELIED UPON AS CORRECTLY STATING REPRESENTATIONS OF THE DEVELOPER. FOR CORRECT REPRESENTATIONS, MAKE REFERENCE TO THE DOCUMENTS THAT ARE REQUIRED BY SECTION 718.503, FLORIDA STATUTES, TO BE FURNISHED BY A DEVELOPER TO A BUYER OR LESSEE. The Developer is 12899 Biscayne Associates, L.L.C. which has a right to use the trademark names and logos of Fortune International Group and Blue Road LLC. This is not an offer to sell, or solicitation of offers to buy, in states where such offer or solicitation cannot be made. Stated square footages and dimensions are measured to the exterior boundaries of the exterior walls and the centerline of interior demising walls and in fact vary from the square footage and dimensions that would be determined by using the description and definition of the "Unit" set forth in the Declaration (which generally only includes the interior airspace between the perimeter walls and excludes all interior structural components and other common elements). This method is generally used in sales materials and is provided to allow prospective buyers to compare the Units with units in other condominium projects that utilize the same method. For your reference, the area of the Unit, determined in accordance with the defined unit boundaries, is xxx sq ft. Measurements of rooms set forth on this floor plan are generally taken at the furthest points of each given room (as if the room were a perfect rectangle), without regard for any cutouts or variations. Accordingly, the area of the actual room will typically be smaller than the product obtained by multiplying the stated length and width. All dimensions are estimates which will vary with actual construction, and all floor plans, specifications and other development plans are subject to change and will not necessarily accurately reflect the final plans and specifications for the development. All depictions of appliances, counters, sinks, floor coverings and other matters of detail, including, without limitation, items of finish and decoration, are conceptual only and are not necessarily included in each Unit.

Residence Q

ONE-BEDROOM + DEN / TWO-BATHROOMS

Levels 6 thru 15

INTERIOR	788 S.F.	73.2 S.M.
TERRACE	206 S.F.	19.1 S.M.
TOTAL	994 S.F.	92.3 S.M.



NEXO
RESIDENCES
NORTH MIAMI BEACH

3025188



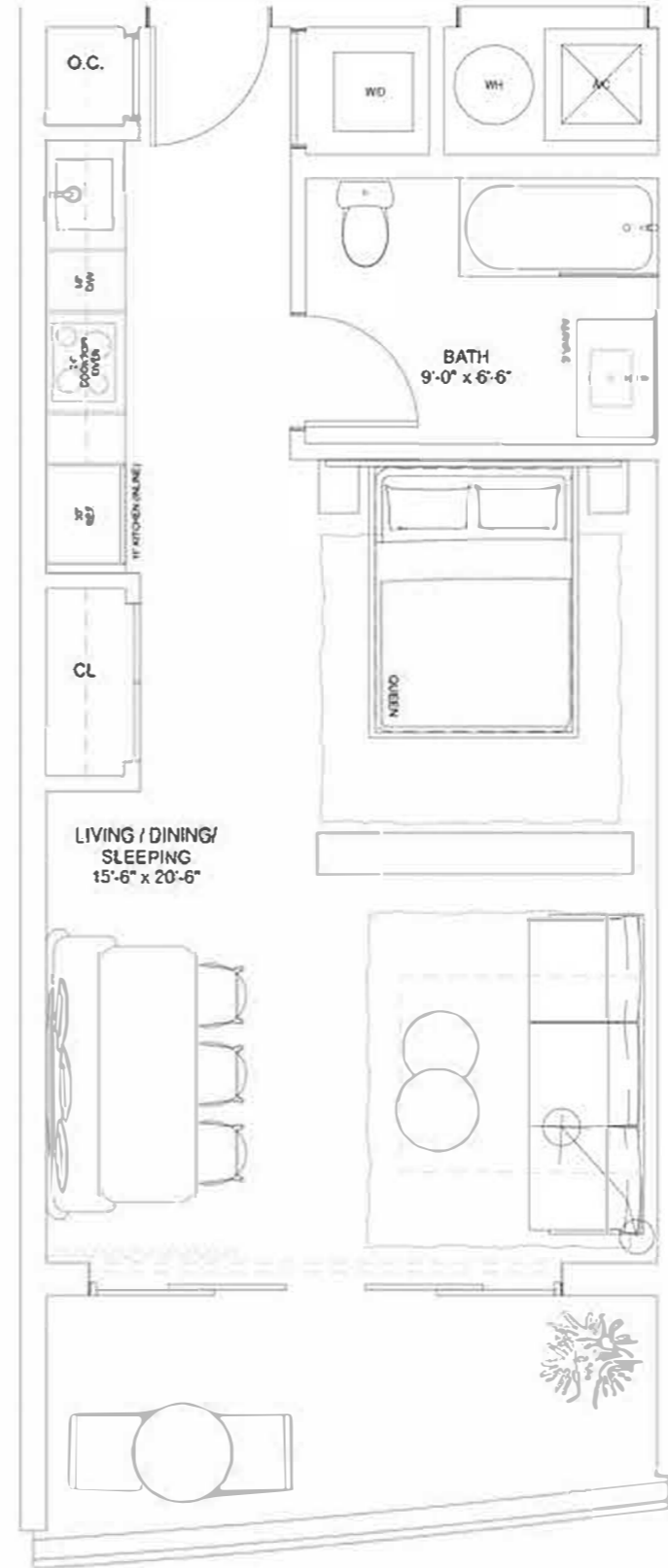
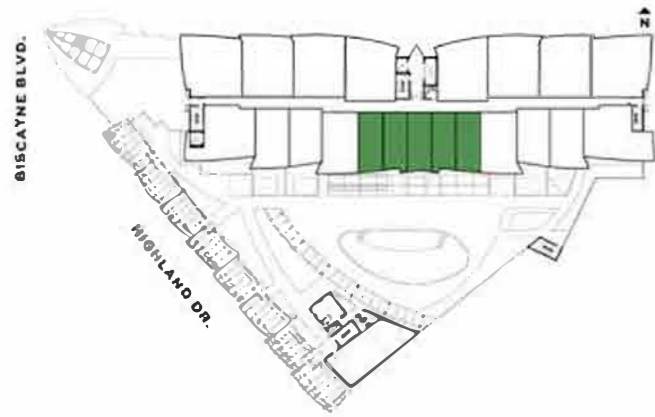
ORAL REPRESENTATIONS CANNOT BE RELIED UPON AS CORRECTLY STATING REPRESENTATIONS OF THE DEVELOPER. FOR CORRECT REPRESENTATIONS, MAKE REFERENCE TO THE DOCUMENTS THAT ARE REQUIRED BY SECTION 718.503, FLORIDA STATUTES, TO BE FURNISHED BY A DEVELOPER TO A BUYER OR LESSEE. The Developer is 13899 Biscayne Associates, LLC, which has a right to use the trademarks and logos of Fortune International Group and Blue Road LLC. This is not an offer to sell, or solicitation of offers to buy, in states where such offer or solicitation cannot be made. Stated square footages and dimensions are measured to the exterior boundaries of the exterior walls and the centerline of interior demising walls and in fact vary from the square footage and dimensions that would be determined by using the description and definition of the "Unit" set forth in the Declaration (which generally only includes the interior airspace between the perimeter walls and excludes all interior structural components and other common elements). This method is generally used in sales materials and is provided to allow a prospective buyer to compare the Units with units in other condominium projects that utilize the same method. For your reference, the area of the Unit, determined in accordance with these defined unit boundaries, is xxx sq ft. Measurements of rooms set forth on this floor plan are generally taken at the farthest points of each given room (as if the room were a perfect rectangle), without regard for any cutouts or variations. Accordingly, the area of the actual room will typically be smaller than the product obtained by multiplying the stated length and width. All dimensions are estimates which will vary with actual construction, and all floor plans, specifications and other development plans are subject to change and will not necessarily accurately reflect the final plans and specifications for the development. All depictions of appliances, counters, soffits, floor coverings and other matters of detail, including, without limitation, items of finish and decoration, are conceptual only and are not necessarily included in each Unit.

Residence P

STUDIO

Levels 6 thru 15

INTERIOR	525 S.F.	48.8 S.M.
TERRACE	107 S.F.	9.9 S.M.
TOTAL	632 S.F.	58.7 S.M.



NEXO
RESIDENCES
NORTH MIAMI BEACH



ORAL REPRESENTATIONS CANNOT BE RELIED UPON AS CORRECTLY STATING REPRESENTATIONS OF THE DEVELOPER. FOR CORRECT REPRESENTATIONS, MAKE REFERENCE TO THE DOCUMENTS THAT ARE REQUIRED BY SECTION 718.503, FLORIDA STATUTES, TO BE FURNISHED BY A DEVELOPER TO A BUYER OR LESSEE. The Developer is 13899 Biscayne Associates, LLC, which has a right to use the trademark names and logos of Fortune International Group and Blue Road LLC. This is not an offer to sell or solicitation of offers to buy, in states where such offer or solicitation cannot be made. Stated square footages and dimensions are measured to the exterior boundaries of the exterior walls and the centerline of interior dividing walls and in fact vary from the square footages and dimensions that would be determined by using the description and definition of the "Unit" set forth in the Declaration (which generally only includes the interior aspect between the perimeter walls and excludes all interior structural components and other common elements). This method is generally used in sales materials and is provided to allow a prospective buyer to compare the Units with units in other condominium projects that utilize the same method. For your reference, the area of the Unit, determined in accordance with these defined unit boundaries, is xxx sq ft. Measurements of rooms set forth on this floor plan are generally taken at the farthest points of each given room (as if the room were a perfect rectangle), without regard for any cutouts or variations. Accordingly, the area of the actual room will typically be smaller than the product obtained by multiplying the stated length and width. All dimensions are estimates which will vary with actual construction, and all floor plans, specifications and other development plans are subject to change and will not necessarily accurately reflect the final plans and specifications for the development. All depictions of appliances, counters, soffits, floor coverings and other matters of detail, including, without limitation, items of finish and decoration, are conceptual only and are not necessarily included in each Unit.

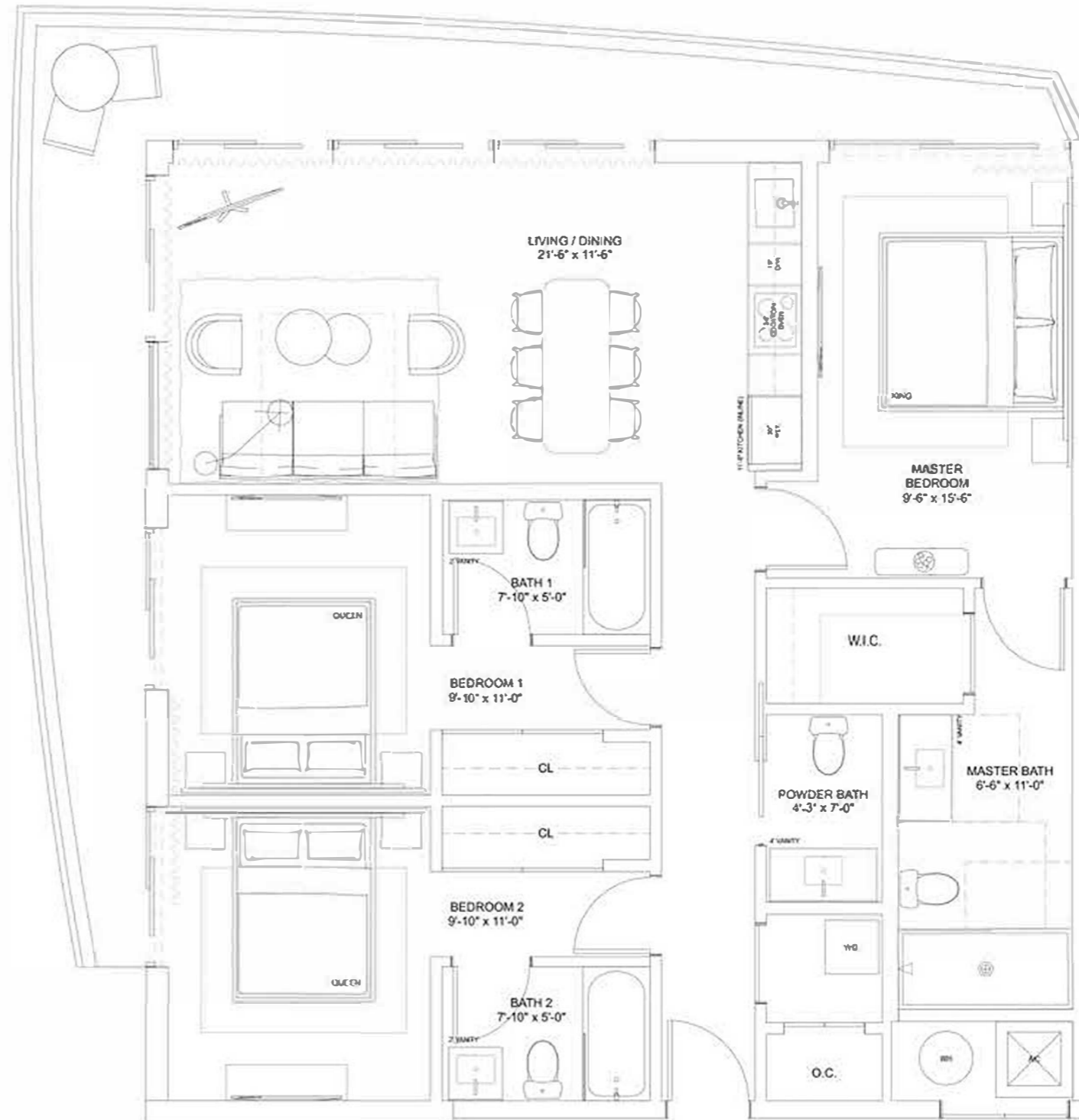
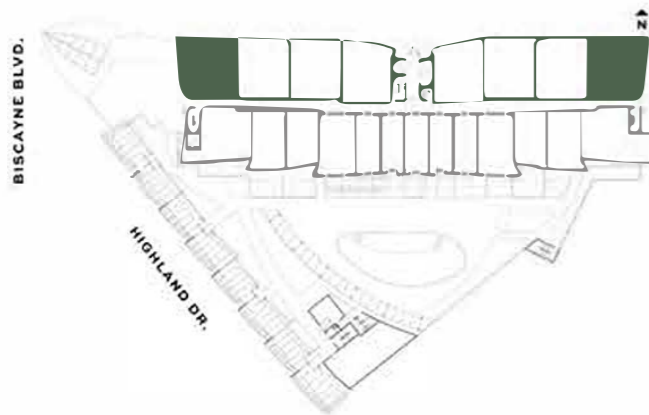


Residence I

THREE-BEDROOMS / THREE + HALF-BATHROOMS

Levels 4 thru 15

INTERIOR	1,262 S.F.	117.2 S.M.
TERRACE	297 S.F.	27.6 S.M.
TOTAL	1,559 S.F.	144.8 S.M.



NEXO
RESIDENCES
NORTH MIAMI BEACH

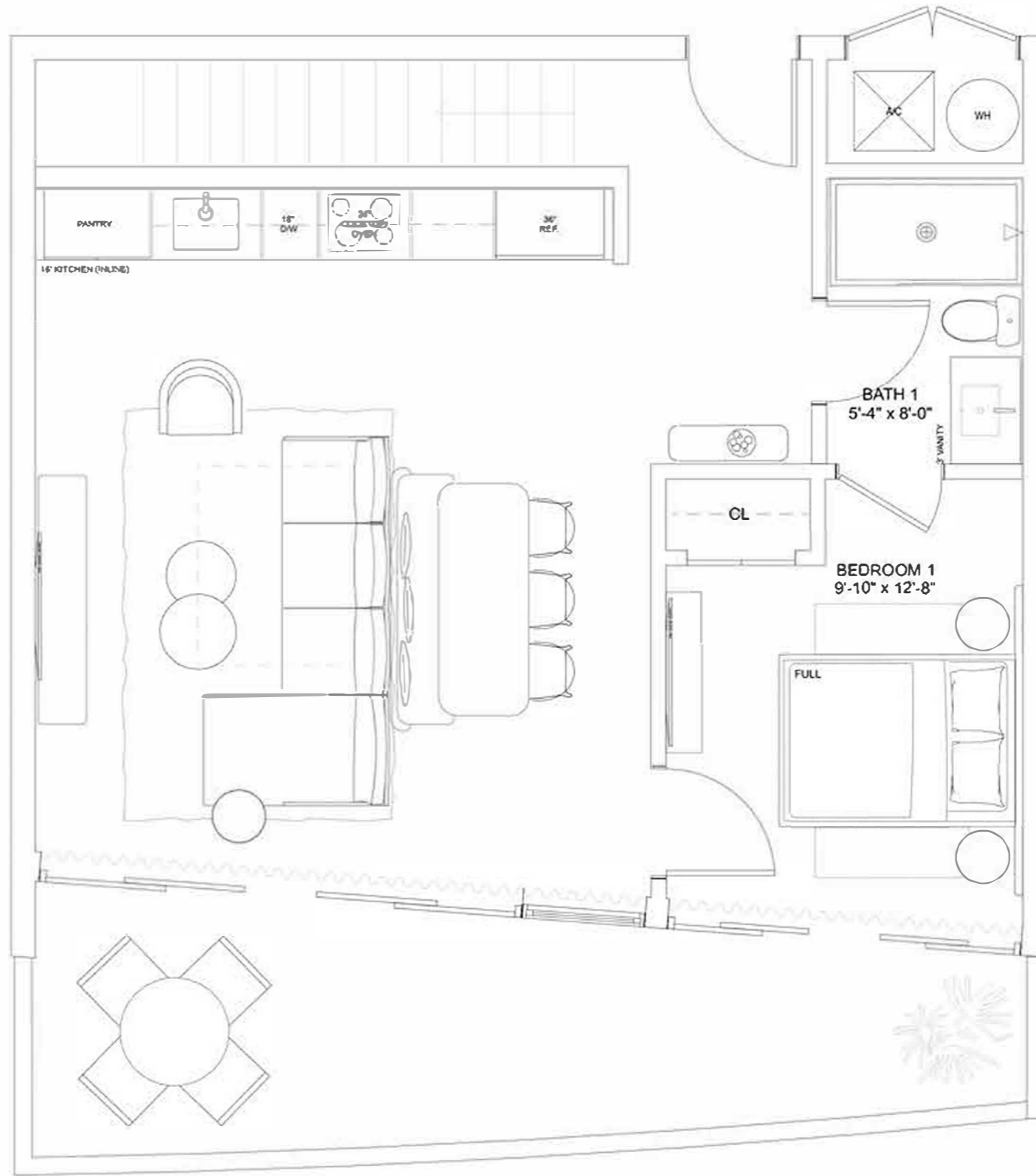
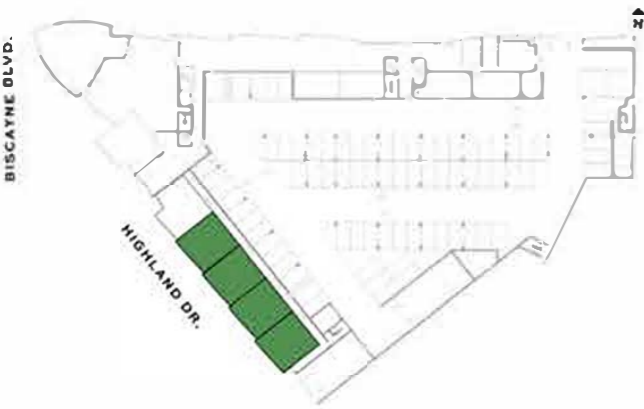


Townhome C

THREE-BEDROOMS / THREE-BATHROOMS

Ground Floor

INTERIOR	1,486 S.F.	138.1 S.M.
TERRACE	320 S.F.	29.7 S.M.
TOTAL	1,806 S.F.	167.8 S.M.



NEXO
RESIDENCES
NORTH MIAMI BEACH



ORAL REPRESENTATIONS CANNOT BE RELIED UPON AS CORRECTLY STATING REPRESENTATIONS OF THE DEVELOPER. FOR CORRECT REPRESENTATIONS, MAKE REFERENCE TO THE DOCUMENTS THAT ARE REQUIRED BY SECTION 718.003, FLORIDA STATUTES, TO BE FURNISHED BY A DEVELOPER TO A BUYER OR LESSEE. The Developer is 13800 Biscayne Associates, LLC, which has a right to use the trademark names and logos of Fortune International Group and Blue Road LLC. This is not an offer to sell, or solicitation of offers to buy, in states where such offer or solicitation cannot be made. Stated square footages and dimensions are measured to the exterior boundaries of the exterior walls and the centerline of interior demising walls and in fact vary from the square footage and dimensions that would be determined by using the description and definition of the "Unit" set forth in the Declaration (which generally only includes the interior airspace between the perimeter walls and exclude all interior structural components and other common elements). This method is generally used in sales materials and is provided to allow a prospective buyer to compare the Units with units in other condominium projects that utilize the same method. For your reference, the area of the Unit, determined in accordance with these defined unit boundaries, is xxx sq ft. Measurements of rooms set forth on this floor plan are generally taken at the farthest points of each given room (as if the room were a perfect rectangle), without regard for any cutouts or variations. Accordingly, the area of the actual room will typically be smaller than the product obtained by multiplying the stated length and width. All dimensions are estimates which will vary with actual construction, and all floor plans, specifications and other development plans are subject to change and will not necessarily accurately reflect the final plans and specifications for the development. All depictions of appliances, counters, fixtures, floor coverings and other matters of detail, including, without limitation, items of finish and decoration, are conceptual only and are not necessarily included in each Unit.

Townhome C

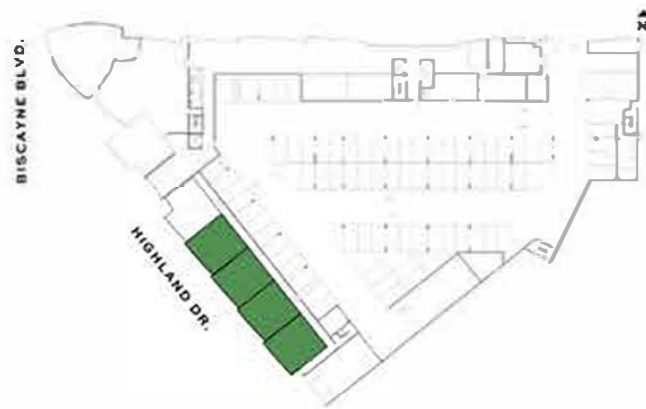
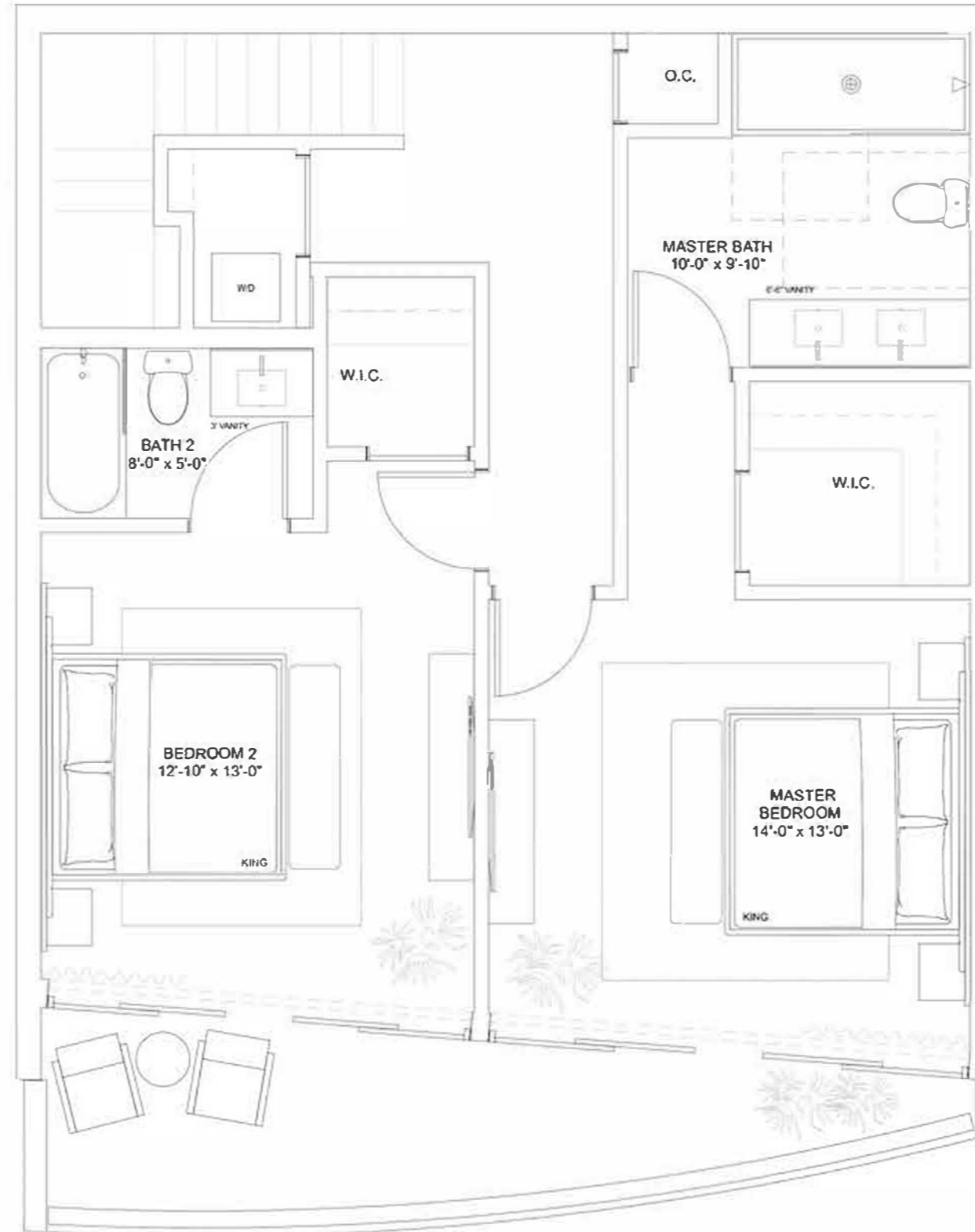
THREE-BEDROOMS / THREE-BATHROOMS

Level 2

INTERIOR	1,486 S.F.	138.1 S.M.
TERRACE	320 S.F.	29.7 S.M.
TOTAL	1,806 S.F.	167.8 S.M.



NEXO
RESIDENCES
NORTH MIAMI BEACH



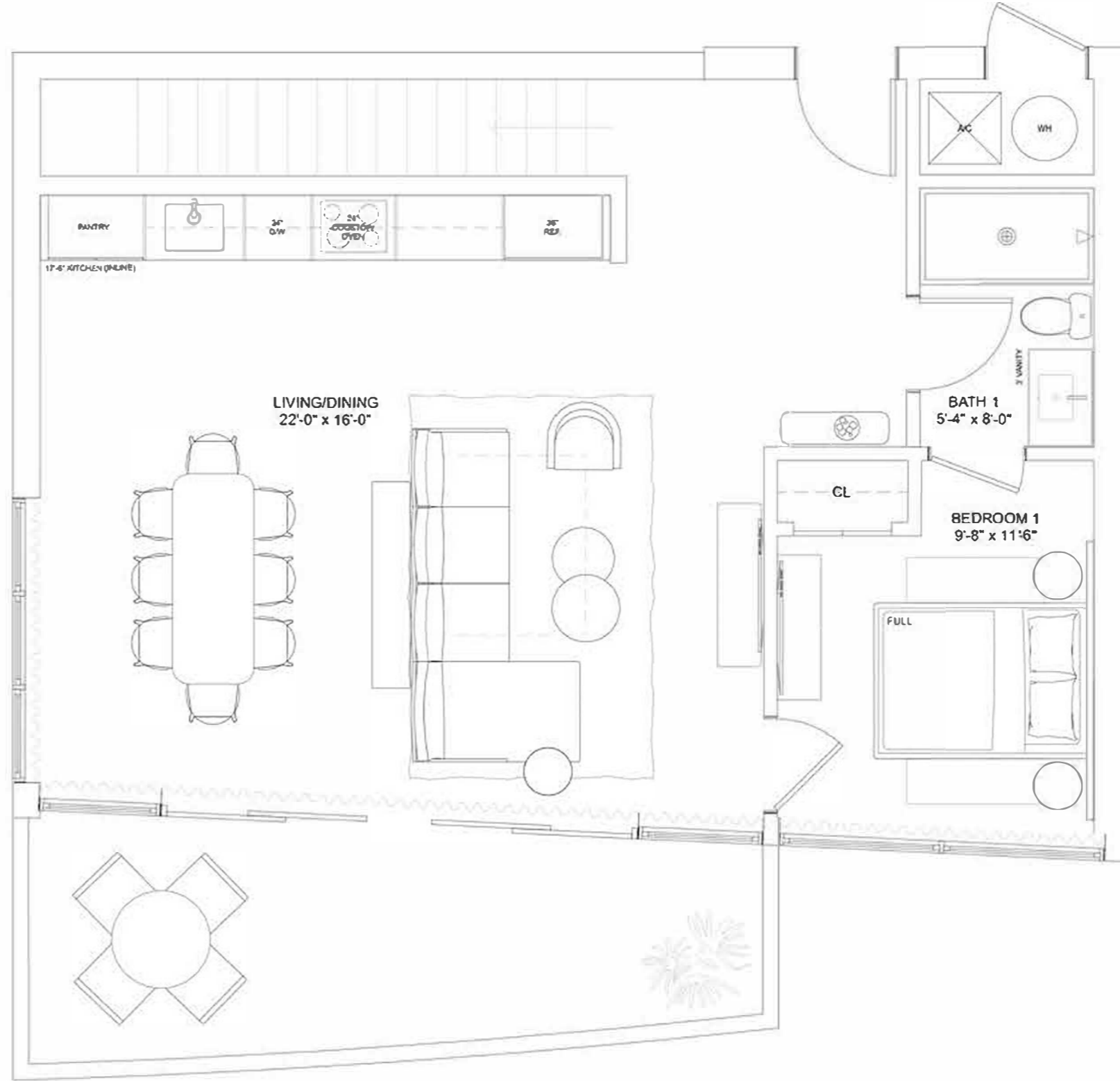
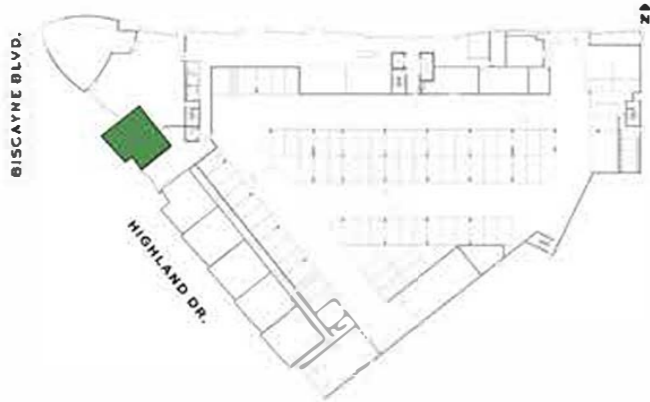
ORAL REPRESENTATIONS CANNOT BE RELIED UPON AS CORRECTLY STATING REPRESENTATIONS OF THE DEVELOPER. FOR CORRECT REPRESENTATIONS, MAKE REFERENCE TO THE DOCUMENTS THAT ARE REQUIRED BY SECTION 718.203, FLORIDA STATUTES, TO BE FURNISHED BY A DEVELOPER TO A BUYER OR LESSEE. The Developer is Blue Road LLC, which has a right to use the trademark names and logos of Fortune International Group and Blue Road LLC. This is not an offer to sell, or solicitation of offers to buy, in states where such offer or solicitation cannot be made. Stated square footages and dimensions are measured to the exterior boundaries of the exterior walls and the centerline of interior demarcating walls and in fact vary from the square footage and dimensions that would be determined by using the description and definition of the "Unit" set forth in the Declaration (which generally only includes the interior airspace between the perimeter walls and excludes all interior structural components and other common elements). This method is generally used in sales materials and is provided to allow a prospective buyer to compare the Units with units in other condominium projects that utilize the same method. For your reference, the area of the Unit, determined in accordance with these defined unit boundaries, is 1,806 sq. ft. Measurements of rooms set forth on this floor plan are generally taken at the farthest points of each given room (as if the room were a perfect rectangle), without regard for any cutouts or variations. Accordingly, the area of the actual room will typically be smaller than the product obtained by multiplying the stated length and width. All dimensions are estimates which will vary with actual construction, and all floor plans, specifications and other development plans are subject to change and will not necessarily accurately reflect the final plans and specifications for the development. All depictions of appliances, counters, soffits, floor coverings and other matters of detail, including, without limitation, items of finish and decoration, are conceptual only and are not necessarily included in each Unit.

Townhome A

FOUR-BEDROOMS / FOUR-BATHROOMS

Ground Floor

INTERIOR	1,951 S.F.	181.3 S.M.
TERRACE	395 S.F.	36.7 S.M.
TOTAL	2,346 S.F.	218 S.M.



NEXO
RESIDENCES
NORTH MIAMI BEACH



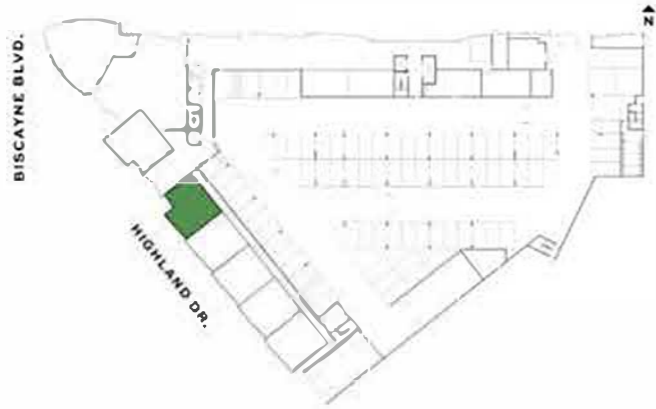
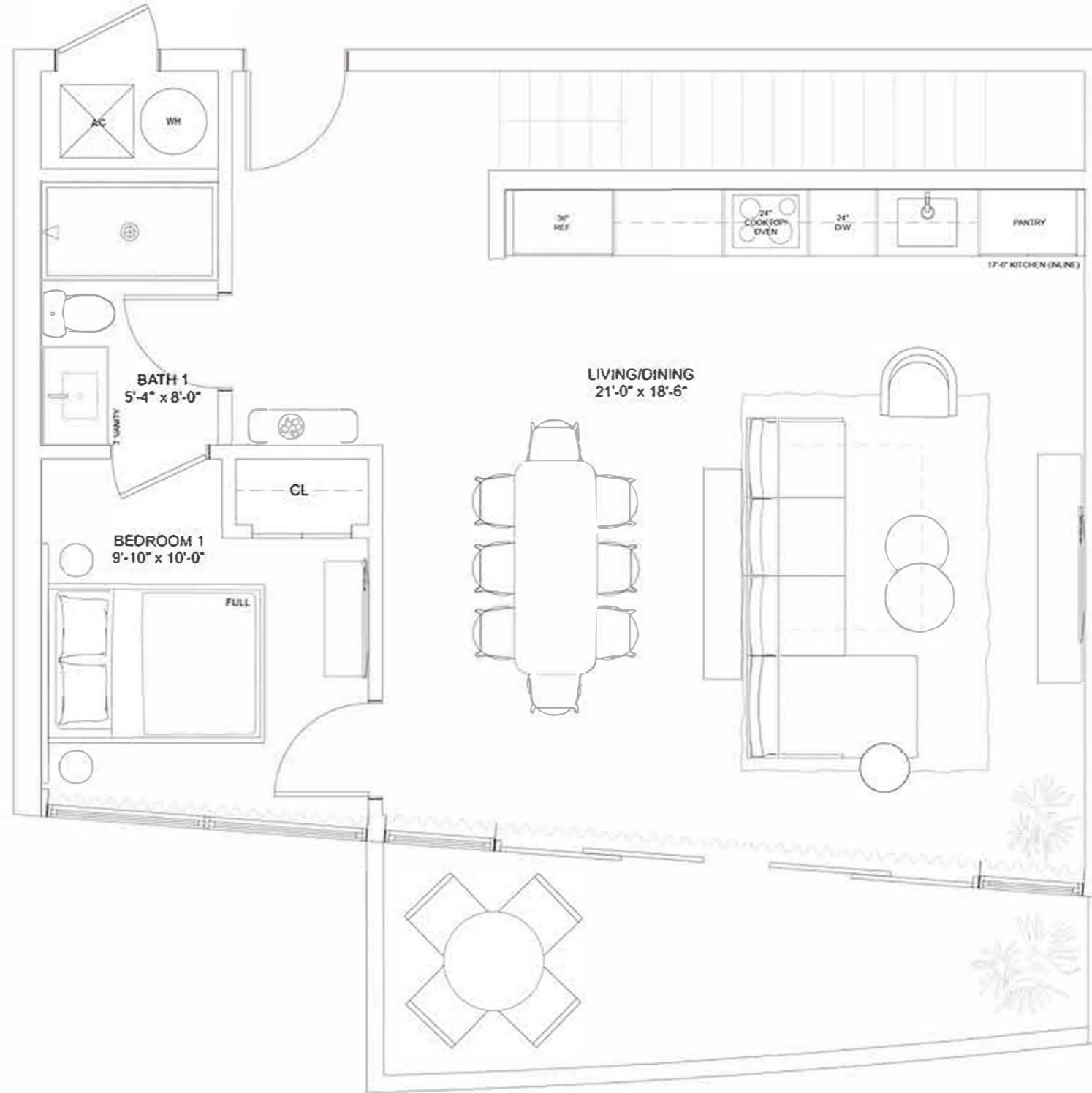
ORAL REPRESENTATIONS CANNOT BE RELIED UPON AS CORRECTLY STATING REPRESENTATIONS OF THE DEVELOPER. FOR CORRECT REPRESENTATIONS, MAKE REFERENCE TO THE DOCUMENTS THAT ARE REQUIRED BY SECTION 718.003, FLORIDA STATUTES, TO BE FURNISHED BY A DEVELOPER TO A BUYER OR LESSEE. The Developer is 13800 Biscayne Associates, LLC, which has a right to use the trademark names and logos of Fortune International Group and Blue Road LLC. This is not an offer to sell, or solicitation of offers to buy, an offer to sell, or solicitation of offers to buy, in states where such offer or solicitation cannot be made. Stated square footages and dimensions are measured to the exterior boundaries of the exterior walls and the centerline of interior demising walls and in fact vary from the square footage and dimensions that would be determined by using the description and definition of the "Unit" set forth in the Declaration (which generally only includes the interior airspace between the perimeter walls and excludes all interior structural components and other common elements). This method is generally used in sales materials and is provided to allow a prospective buyer to compare the Unit with units in other condominium projects that utilize the same method. For your reference, the area of the Unit, determined in accordance with these defined unit boundaries, is 2,346 sq. ft. Measurements of rooms set forth on this floor plan are generally taken at the farthest points of each given room (as if the room were a perfect rectangle), without regard for any cutouts or variations. Accordingly, the area of the actual room will typically be smaller than the product obtained by multiplying the stated length and width. All dimensions are estimates which will vary with actual construction, and all floor plans, specifications and other development plans are subject to change and will not necessarily accurately reflect the final plans and specifications for the development. All depictions of appliances, counters, soffits, floor coverings and other matters of detail, including, without limitation, items of finish and decoration, are conceptual only and are not necessarily included in each Unit.

Townhome B

FOUR-BEDROOMS / FOUR-BATHROOMS

Ground Floor

INTERIOR	2,190 S.F.	203.5 S.M.
TERRACE	274 S.F.	25.5 S.M.
TOTAL	2,464 S.F.	229 S.M.



NEXO
RESIDENCES
NORTH MIAMI BEACH



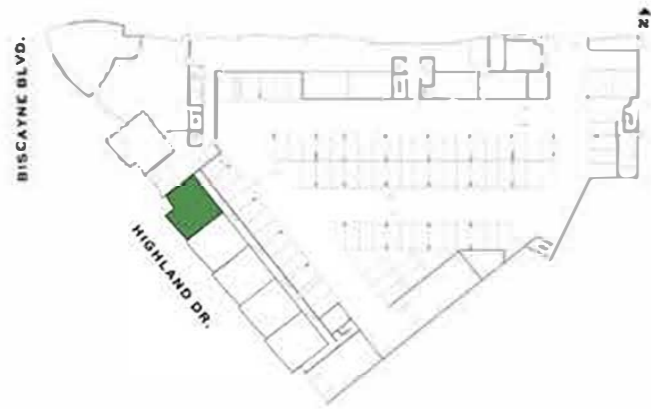
ORAL REPRESENTATIONS CANNOT BE RELIED UPON AS CORRECTLY STATING REPRESENTATIONS OF THE DEVELOPER. FOR CORRECT REPRESENTATIONS, MAKE REFERENCE TO THE DOCUMENTS THAT ARE REQUIRED BY SECTION 718.303, FLORIDA STATUTES, TO BE FURNISHED BY A DEVELOPER TO A BUYER OR LESSEE. The Developer is 13800 Biscayne Associates, LLC, which has a right to use the trademark names and logos of Fortune International Group and Blue Road LLC. This is not an offer to sell, or solicitation of offers to buy, in states where such offer or solicitation cannot be made. Stated square footages and dimensions are measured to the exterior boundaries of the exterior walls and the centerline of interior demising walls and in fact vary from the square footage and dimensions that would be determined by using the description and definition of the "Unit" set forth in the Declaration (which generally only includes the interior airspace between the perimeter walls and excludes all interior structural components and other common elements). This method is generally used in sales materials and is provided to allow a prospective buyer to compare the Units with units in other condominium projects that utilize the same method. For your reference, the area of the Unit, determined in accordance with these defined unit boundaries, is 2,464 sq. ft. Measurements of rooms set forth on this floor plan are generally taken at the farthest points of each given room (as if the room were a perfect rectangle), without regard for any cutouts or variations. Accordingly, the area of the actual room will typically be smaller than the product obtained by multiplying the stated length and width. All dimensions are estimates which will vary with actual construction, and all floor plans, specifications and other development plans are subject to change and will not necessarily accurately reflect the final plans and specifications for the development. All depictions of appliances, counters, soffits, floor coverings and other matters of detail, including, without limitation, kinds of finish and decoration, are conceptually and are not necessarily included in each Unit.

Townhome B

FOUR-BEDROOMS / FOUR-BATHROOMS

Level 2

INTERIOR	2,190 S.F.	203.5 S.M.
TERRACE	274 S.F.	25.5 S.M.
TOTAL	2,464 S.F.	229 S.M.



NEXO
RESIDENCES
NORTH MIAMI BEACH



ORAL REPRESENTATIONS CAN NOT BE RELIED UPON AS CORRECTLY STATING REPRESENTATION OF THE DEVELOPER. FOR CORRECT REPRESENTATIONS, MAKE REFERENCE TO THE DOCUMENTS THAT ARE REQUIRED BY SECTION 718.503, FLORIDA STATUTES, TO BE FURNISHED BY A DEVELOPER TO A BUYER OR LESSEE. The Developer is 13800 Biscayne Associates, LLC, which has a right to use the trademark names and logos of Fortune International Group and Blue Road LLC. This is not an offer to sell, or solicitation of offers to buy, in states where such offer or solicitation cannot be made. Stated square footages and dimensions are measured to the exterior boundaries of the exterior walls and the centerline of interior demarcating walls and in fact vary from the square footage and dimensions that would be determined by using the description and definition of the "Unit" set forth in the Declaration (which generally only includes the interior airspace between the perimeter walls and excludes all interior structural components and other common elements). This method is generally used in sales materials and is provided to allow a prospective buyer to compare the Units with units in other condominium projects that utilize the same method. For your reference, the area of the Unit, determined in accordance with these defined unit boundaries, is 2,464 sq ft. Measurements of rooms set forth on this floor plan are generally taken at the furthest points of each given room (as if the room were a perfect rectangle), without regard for any cutouts or variations. Accordingly, the area of the actual room will typically be smaller than the product obtained by multiplying the stated length and width. All dimensions are estimates which will vary with actual construction, and all floor plans, specifications and other development plans are subject to change and will not necessarily accurately reflect the final plans and specifications for the development. All depictions of appliances, counters, soffits, floor coverings and other matters of detail, including, without limitation, items of finish and decoration, are conceptual only and are not necessarily included in each Unit.

Residence R

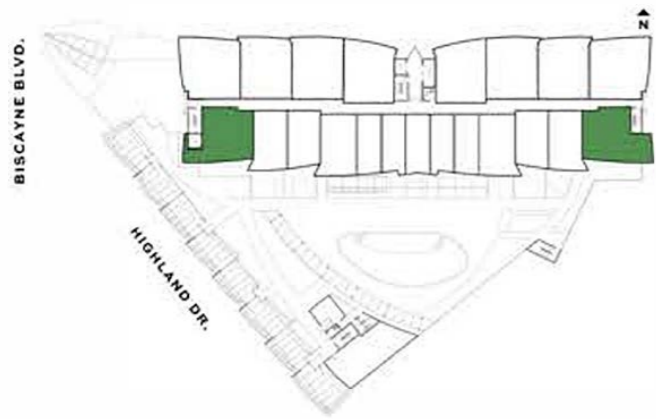
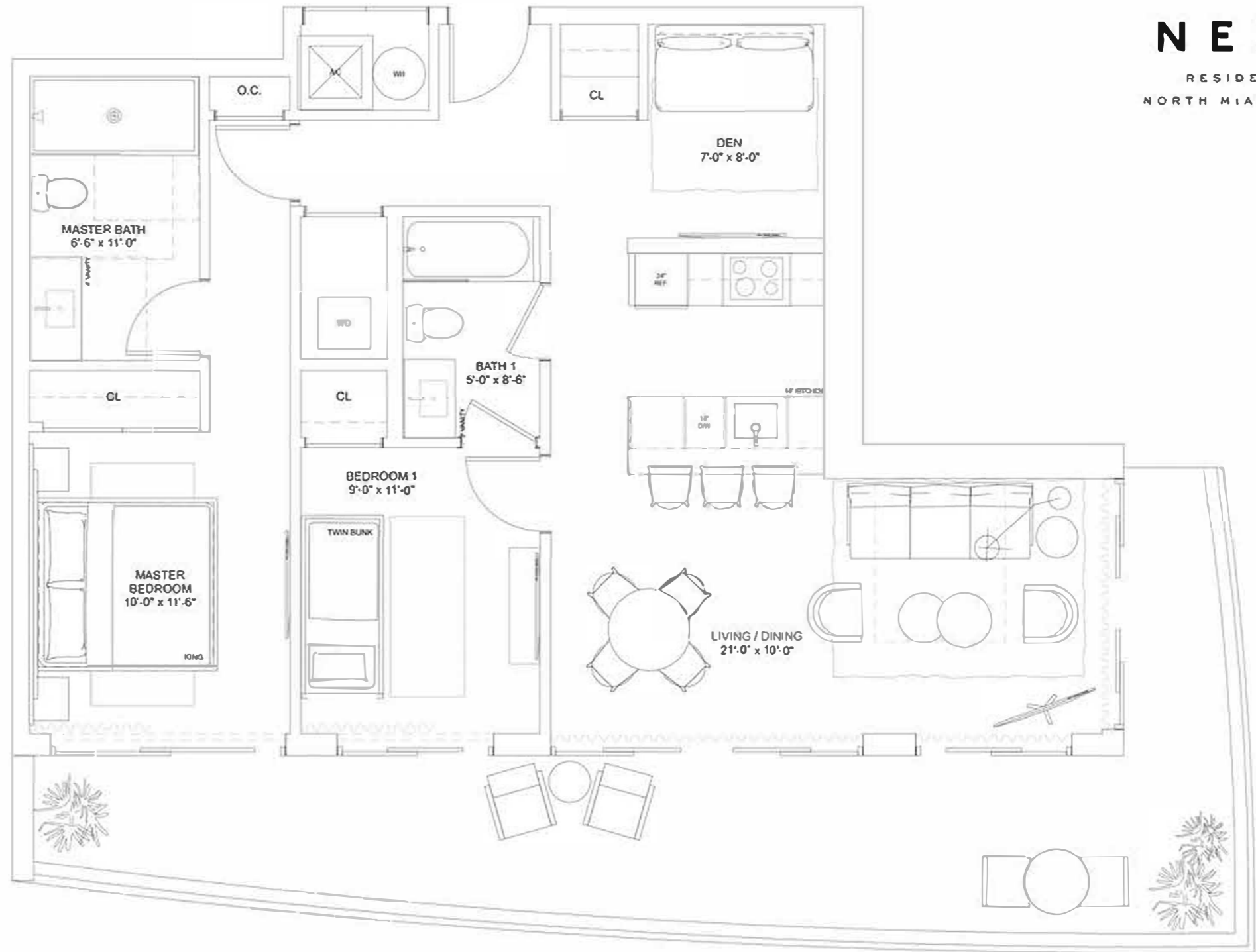
TWO-BEDROOMS + DEN / TWO-BATHROOMS

Levels 6 thru 15

INTERIOR	1,015 S.F.	94.3 S.M.
TERRACE	368 S.F.	34.2 S.M.
TOTAL	1,383 S.F.	128.5 S.M.



NEXO
RESIDENCES
NORTH MIAMI BEACH



10/1/2024



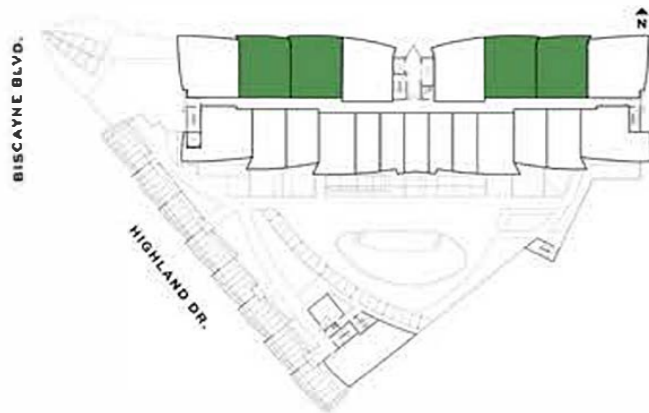
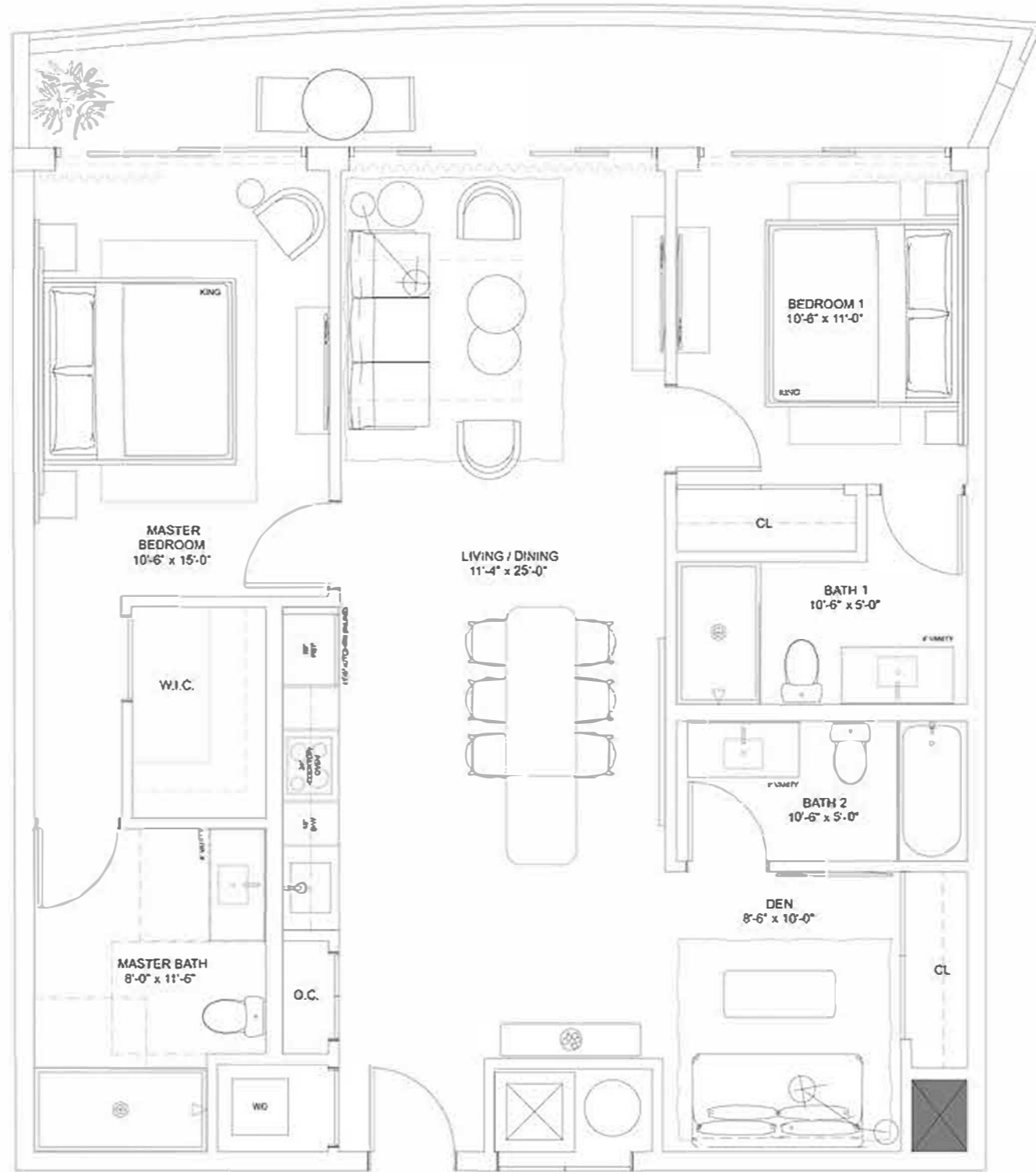
ORAL REPRESENTATIONS CANNOT BE RELIED UPON AS CORRECTLY STATING REPRESENTATIONS OF THE DEVELOPER. FOR CORRECT REPRESENTATIONS, MAKE REFERENCE TO THE DOCUMENTS THAT ARE REQUIRED BY SECTION 718.603, FLORIDA STATUTES, TO BE FURNISHED BY A DEVELOPER TO A BUYER OR LESSEE. The Developer is 13000 Biscayne Associates, LLC, which has a right to use the trademarks and logos of Fortune International Group and Blue Road LLC. This is not an offer to sell, or solicitation of offers to buy, in states where such offer or solicitation cannot be made. Stated square footages and dimensions are measured to the exterior boundaries of the exterior walls and the centerline of interior demarcating walls and in fact may vary from the square footage and dimensions that would be determined by using the description and definition of the "Unit" set forth in the Declaration (which generally only includes the interior airspace between the perimeter walls and excludes all interior structural components and other common elements). This method is generally used in sales materials and is provided to allow a prospective buyer to compare the floor plan with units in other condominium projects that utilize the same method. For your reference, the area of the Unit, determined in accordance with these defined unit boundaries, is xxx sq ft. Measurements of rooms set forth on this floor plan are generally taken at the furthest points of each given room (as if the room were a perfect rectangle), without regard for any cutouts or variations. Accordingly, the area of the actual room will typically be smaller than the product obtained by multiplying the stated length and width. All dimensions are estimates which will vary with actual construction, and all floor plans, specifications and other development plans are subject to change and will not necessarily accurately reflect the final plans and specifications for the development. All depictions of appliances, counters, soffits, floor coverings and other matters of detail, including, without limitation, items of finish and decoration, are conceptual only and are not necessarily included in each Unit.

Residence J

TWO-BEDROOMS + DEN / THREE-BATHROOMS

Levels 4 thru 15

INTERIOR	1,230 S.F.	114.3 S.M.
TERRACE	155 S.F.	14.4 S.M.
TOTAL	1,385 S.F.	128.7 S.M.



NEXO
RESIDENCES
NORTH MIAMI BEACH

Residence K

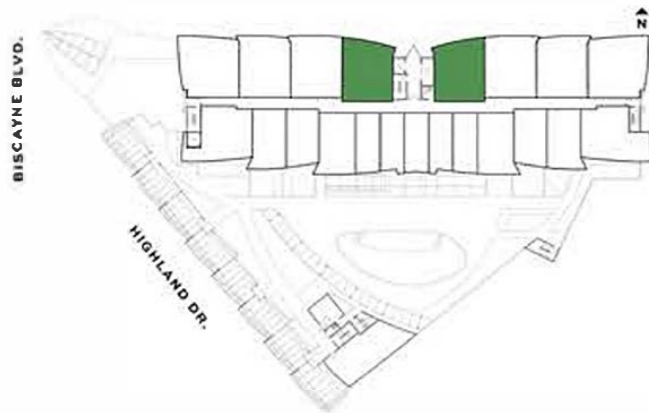
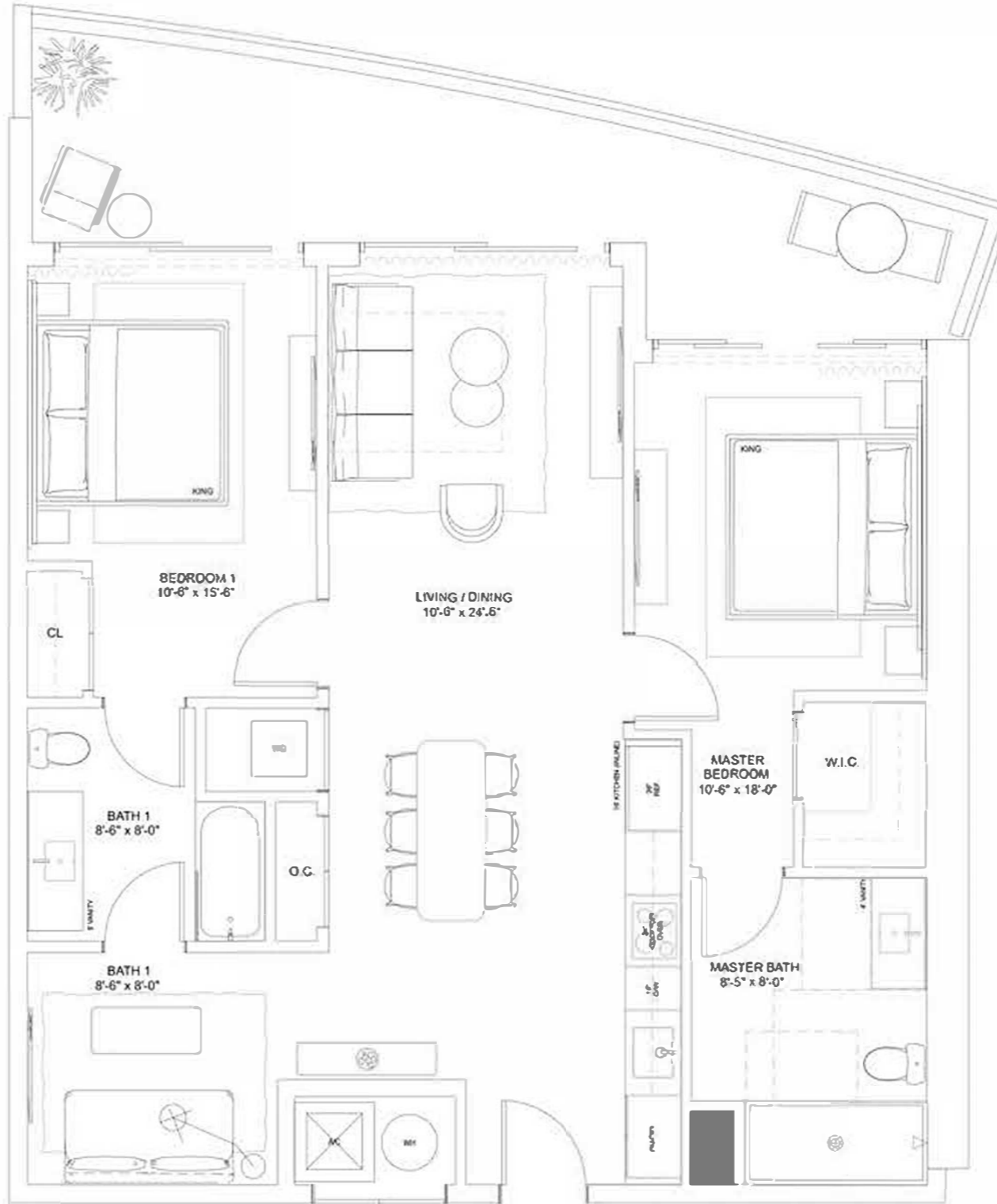
TWO-BEDROOMS + DEN / TWO-BATHROOMS

Levels 4 thru 15

INTERIOR	1,102 S.F.	102.4 S.M.
TERRACE	238 S.F.	22.1 S.M.
TOTAL	1,340 S.F.	124.5 S.M.



NEXO
RESIDENCES
NORTH MIAMI BEACH



SECTION 01



ORAL REPRESENTATIONS CANNOT BE RELIED UPON AS CORRECTLY STATING REPRESENTATIONS OF THE DEVELOPER. FOR CORRECT REPRESENTATIONS, MAKE REFERENCE TO THE DOCUMENTS THAT ARE REQUIRED BY SECTION 718.503, FLORIDA STATUTES, TO BE FURNISHED BY A DEVELOPER TO A BUYER OR LESSEE. The Developer is 12899 Biscayne Associates, L.L.C. which has a right to use the trademark names and logos of Fortune International Group and Blue Road LLC. This is not an offer to sell, or solicitation of offers to buy, in states where such offer or solicitation cannot be made. Stated square footages and dimensions are measured to the exterior boundaries of the exterior walls and the centerline of interior demising walls and in fact vary from the square footage and dimensions that would be determined by using the description and definition of the "Unit" set forth in the Declaration (which generally only includes the interior aspects between the perimeter walls and excludes all interior structural components and other common elements). This method is generally used in sales materials and is provided to allow a prospective buyer to compare the Unit with units in other condominium projects that utilize the same method. For your reference, the area of the Unit, determined in accordance with these defined unit boundaries, is 1,340 sq. ft. Measurements of rooms set forth on this floor plan are generally taken at the furthest points of each given room (as if the room were a perfect rectangle), without regard for any cutouts or variations. Accordingly, the area of the actual room will typically be smaller than the product obtained by multiplying the stated length and width. All dimensions are estimates which will vary with actual construction, and all floor plans, specifications and other development plans are subject to change and will not necessarily accurately reflect the final plans and specifications for the development. All depictions of appliances, counters, sinks, floor coverings and other matters of detail, including, without limitation, items of finish and decoration, are conceptual only and are not necessarily included in each Unit.

Residence H

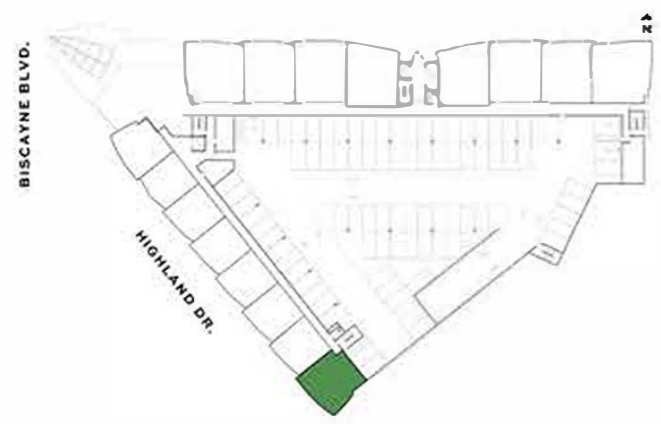
TWO-BEDROOMS / TWO-BATHROOMS

Level 4

INTERIOR	900 S.F.	83.6 S.M.
TERRACE	228 S.F.	21.2 S.M.
TOTAL	1,128 S.F.	104.8 S.M.



NEXO
RESIDENCES
NORTH MIAMI BEACH



12/20/2023



ORAL REPRESENTATIONS CANNOT BE RELIED UPON AS CORRECTLY STATING REPRESENTATIONS OF THE DEVELOPER. FOR CORRECT REPRESENTATIONS, MAKE REFERENCE TO THE DOCUMENTS THAT ARE REQUIRED BY SECTION 718.503, FLORIDA STATUTES, TO BE FURNISHED BY DEVELOPER TO A BUYER OR LESSEE. The Developer is Blue Road LLC, which has a right to use the trademark names and logos of Fortune International Group and Blue Road LLC. This is not an offer to sell, or solicitation of offers to buy, in states where such offer or solicitation cannot be made. Stated square footages and dimensions are measured to the exterior boundaries of the exterior walls and the centerline of interior demising walls and in fact vary from the square footage and dimensions that would be determined by using the description and definition of the "Unit" set forth in the Declaration (which generally only includes the interior airspace between the perimeter walls and excludes all interior structural components and other common elements). This method is generally used in the industry and is provided to allow a prospective buyer to compare the Units with units in other condominium projects that utilize the same method. For your reference, the area of the Unit, determined in accordance with these defined unit boundaries, is 1,128 S.F. Measurements of rooms set forth on this floor plan are generally taken at the furthest points of each open room (as if the room were a perfect rectangle), without regard for any cutouts or variations. Accordingly, the area of the actual room will typically be smaller than the product obtained by multiplying the stated length and width. All dimensions are estimates which will vary with actual construction, and all floor plan, specifications and other development plans are subject to change and will not necessarily accurately reflect the final plans and specifications for the development. All depictions of appliances, counters, soffits, floor coverings and other matters of detail, including, without limitation, items of finish and color, are conceptual and are not necessarily included in each Unit.

Residence L

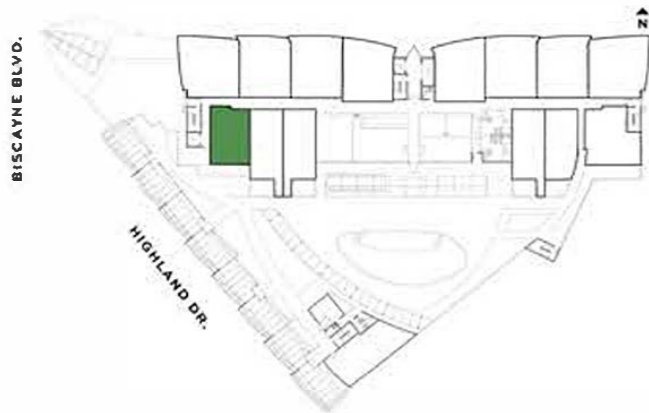
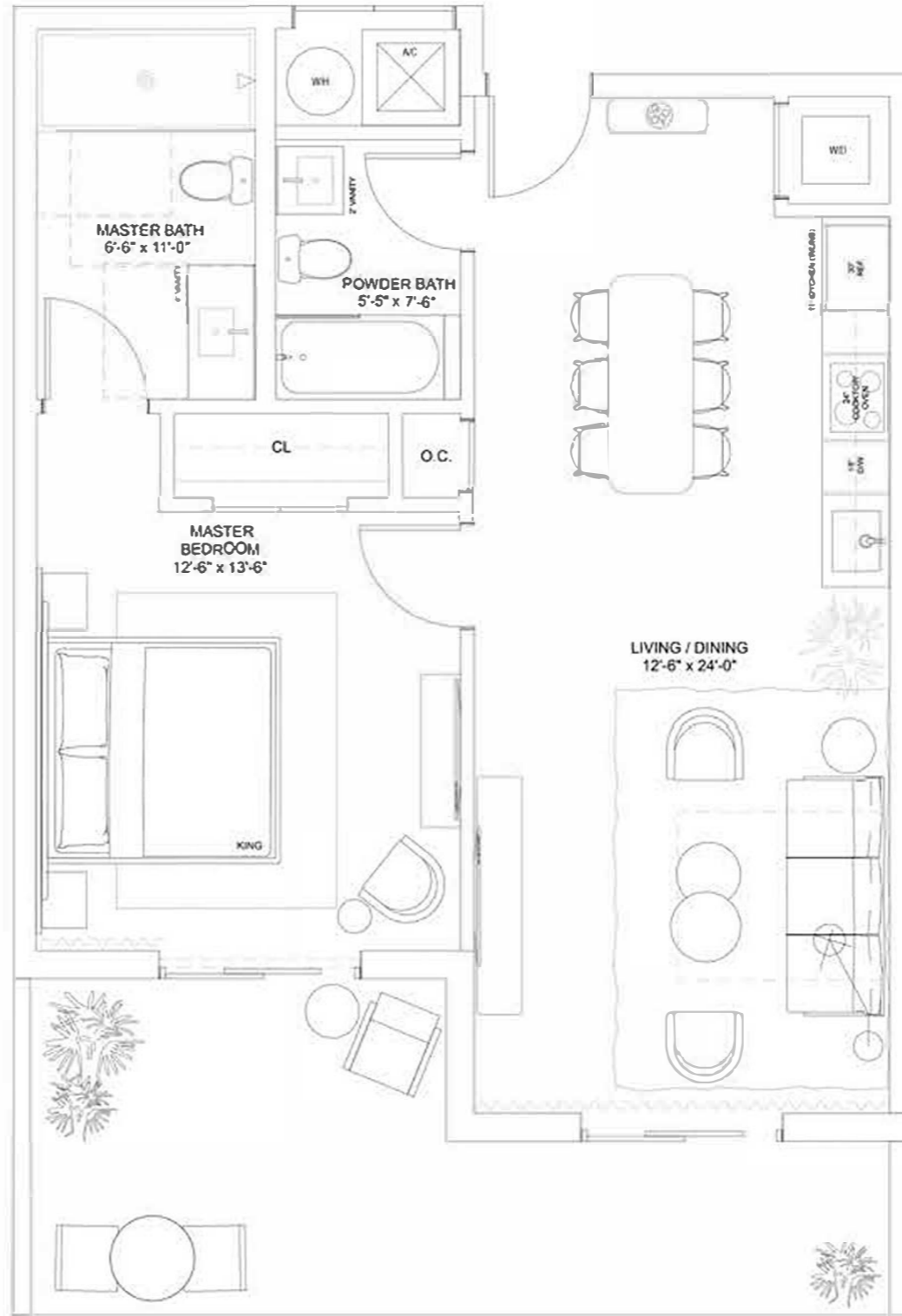
ONE-BEDROOM / TWO-BATHROOMS

Level 5

INTERIOR	780 S.F.	72.5 S.M.
TERRACE	775 S.F.	72 S.M.
TOTAL	1,555 S.F.	144.5 S.M.



NEXO
RESIDENCES
NORTH MIAMI BEACH



SECTION 01



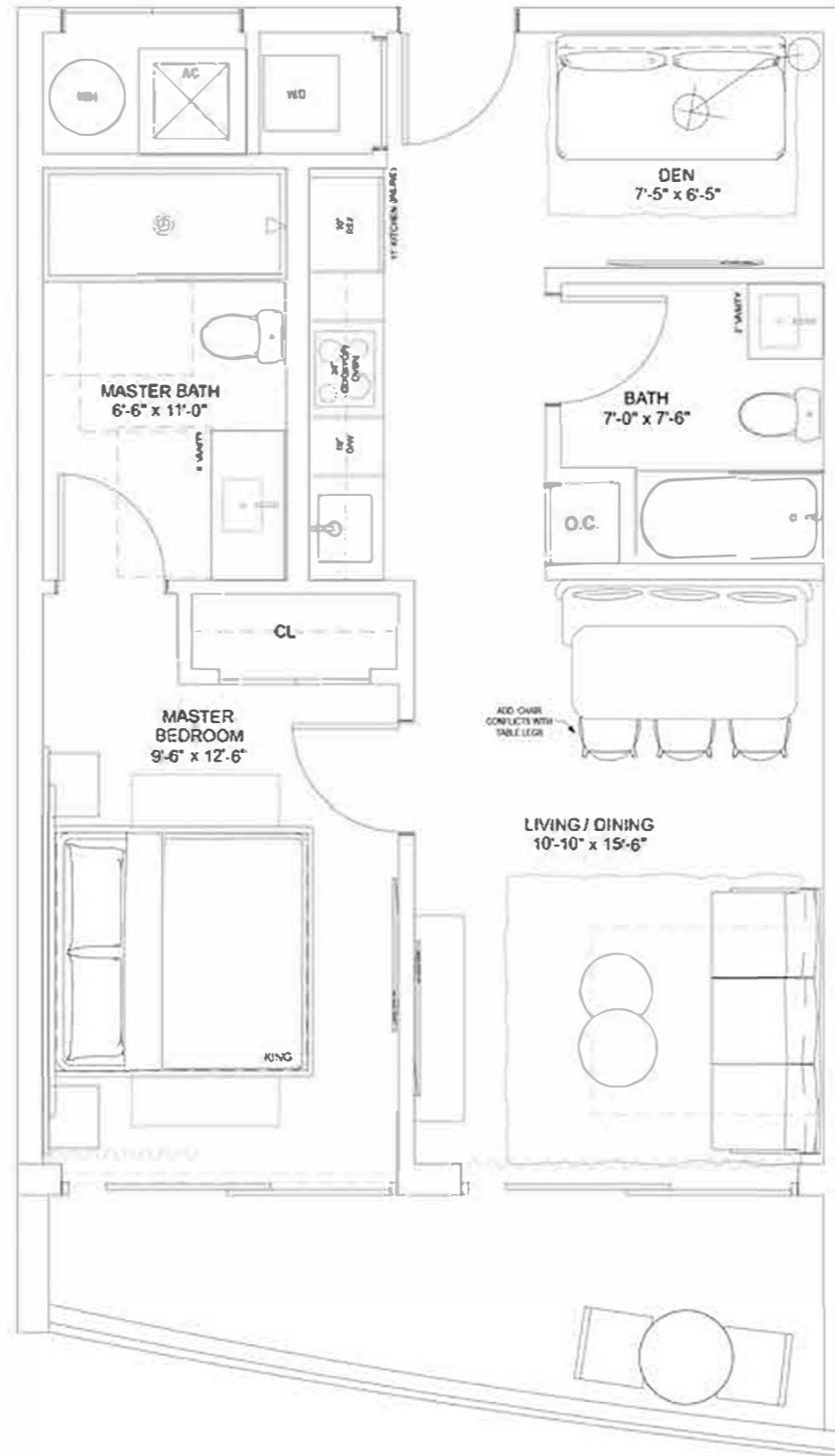
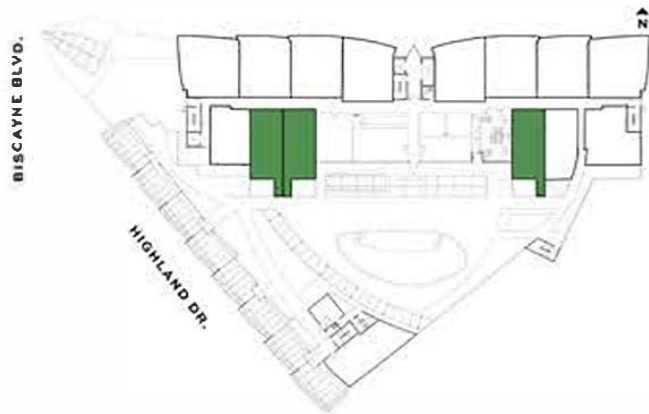
ORAL REPRESENTATIONS CANNOT BE RELIED UPON AS CORRECTLY STATING REPRESENTATIONS OF THE DEVELOPER. FOR CORRECT REPRESENTATIONS, MAKE REFERENCE TO THE DOCUMENTS THAT ARE REQUIRED BY SECTION 718.503, FLORIDA STATUTES, TO BE FURNISHED BY DEVELOPER TO A BUYER OR LESSEE. The Developer is 12899 Biscayne Associates, L.L.C. which has a right to use the trademark names and logos of Fortune International Group and Blue Road L.L.C. This is not an offer to sell, or solicitation of offers to buy, in states where such offer or solicitation cannot be made. Stated square footages and dimensions are measured to the exterior boundaries of the exterior walls and the centerline of interior demising walls and in fact vary from the square footage and dimensions that would be determined by using the description and definition of the "Unit" set forth in the Declaration which generally only includes the interior airspace between the perimeter walls and excludes all interior structural components and other common elements. This method is generally used in sales materials and is provided to allow a prospective buyer to compare the Unit with units in other condominium projects that utilize the same method. For your reference, the area of the Unit, determined in accordance with these defined unit boundaries, is 1,555 sq. ft. Measurements of rooms set forth on this floor plan are generally taken at the furthest points of each given room (as if the room were a perfect rectangle), without regard for any cutouts or variations. Accordingly, the area of the actual room will typically be smaller than the product obtained by multiplying the stated length and width. All dimensions are estimates which will vary with actual construction, and all floor plans, specifications and other development plans are subject to change and will not necessarily accurately reflect the final plans and specifications for the development. All depictions of appliances, counters, soffits, floor coverings and other matters of detail, including, without limitation, items of finish and decoration, are conceptual only and are not necessarily included in each Unit.

Residence M1

ONE-BEDROOM + DEN / TWO-BATHROOMS

Level 5

INTERIOR	679 S.F.	63.1 S.M.
TERRACE	574 S.F.	53.3 S.M.
TOTAL	1,253 S.F.	116.4 S.M.



NEXO
RESIDENCES
NORTH MIAMI BEACH

SECTION 01



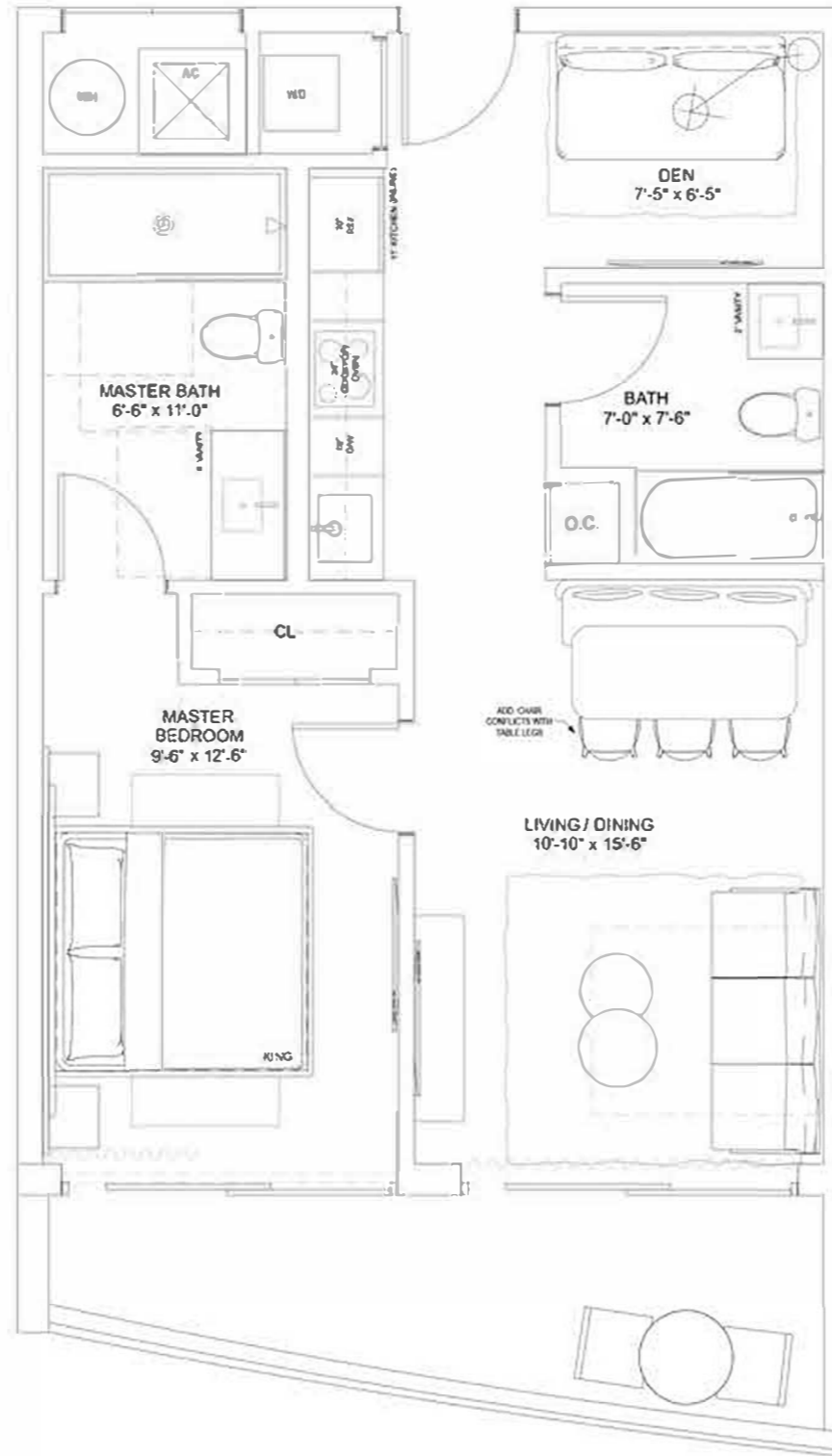
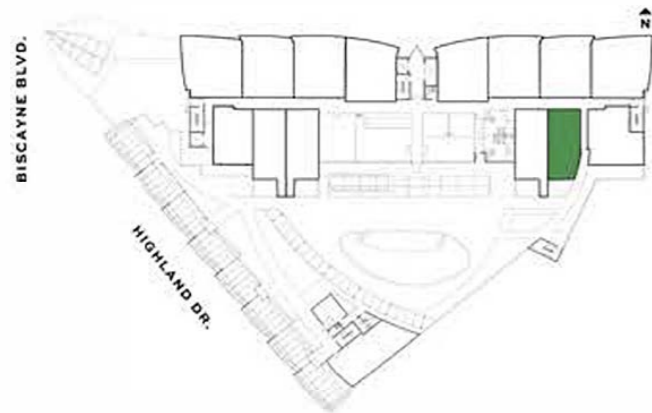
ORAL REPRESENTATIONS CANNOT BE RELIED UPON AS CORRECTLY STATING REPRESENTATIONS OF THE DEVELOPER. FOR CORRECT REPRESENTATIONS, MAKE REFERENCE TO THE DOCUMENTS THAT ARE REQUIRED BY SECTION 718.503, FLORIDA STATUTES, TO BE FURNISHED BY A DEVELOPER TO A BUYER OR LESSEE. The Developer is 12899 Biscayne Associates, LLC, which has a right to use the trademark names and logos of Fortune International Group and Blue Road LLC. This is not an offer to sell, or solicitation of offers to buy, in states where such offer or solicitation cannot be made. Stated square footages and dimensions are measured to the exterior boundaries of the exterior walls and the centerline of interior demising walls and in fact vary from the square footage and dimensions that would be determined by using the description and definition of the "Unit" set forth in the Declaration (which generally only includes the interior airspace between the perimeter walls and excludes all interior structural components and other common elements). This method is generally used in sales materials and is provided to allow a prospective buyer to compare the Unit with units in other condominium projects that utilize the same method. For your reference, the area of the Unit, determined in accordance with these defined unit boundaries, is xxx sq ft. Measurements of rooms set forth on this floor plan are generally taken at the furthest points of each given room (as if the room were a perfect rectangle), without regard for any cutouts or variations. Accordingly, the area of the actual room will typically be smaller than the product obtained by multiplying the stated length and width. All dimensions are estimates which will vary with actual construction, and all floor plans, specifications and other development plans are subject to change and will not necessarily accurately reflect the final plans and specifications for the development. All depictions of appliances, counters, sinks, floor coverings and other matters of detail, including, without limitation, items of finish and decoration, are conceptual only and are not necessarily included in each Unit.

Residence M2

ONE-BEDROOM + DEN / TWO-BATHROOMS

Level 5

INTERIOR	679 S.F.	63.1 S.M.
TERRACE	479 S.F.	44.5 S.M.
TOTAL	1,158 S.F.	107.6 S.M.



NEXO
RESIDENCES
NORTH MIAMI BEACH

SECTION 01



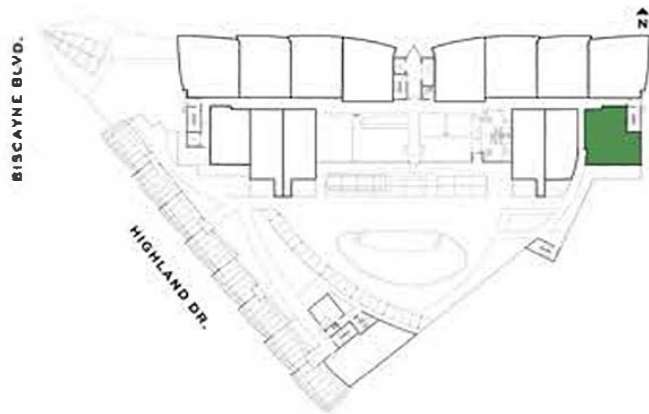
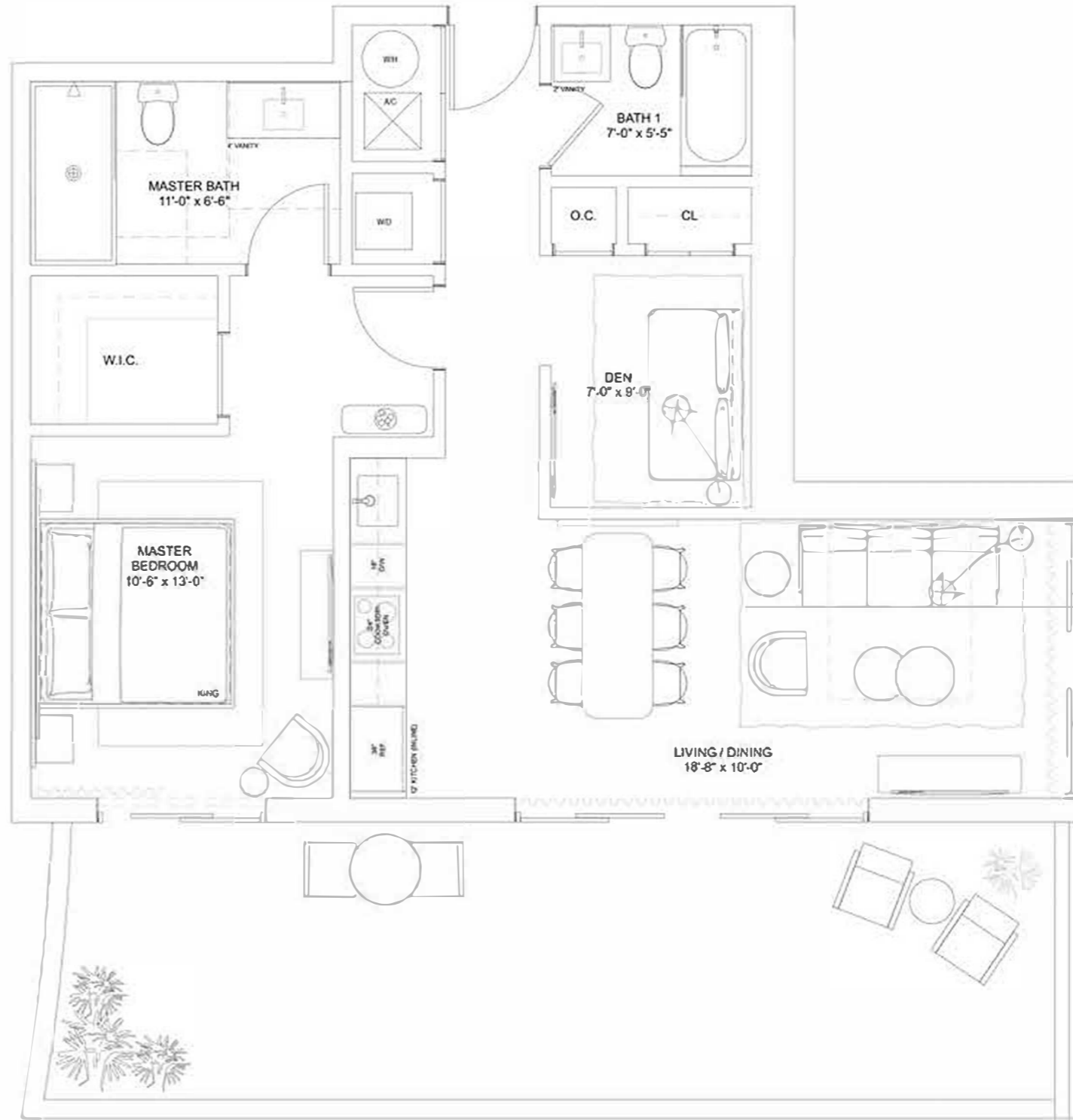
ORAL REPRESENTATIONS CANNOT BE RELIED UPON AS CORRECTLY STATING REPRESENTATIONS OF THE DEVELOPER. FOR CORRECT REPRESENTATIONS, MAKE REFERENCE TO THE DOCUMENTS THAT ARE REQUIRED BY SECTION 718.503, FLORIDA STATUTES, TO BE FURNISHED BY A DEVELOPER TO A BUYER OR LESSEE. The Developer is 12899 Biscayne Associates, L.L.C. which has a right to use the trademark names and logos of Fortune International Group and Blue Road LLC. This is not an offer to sell, or solicitation of offers to buy, in states where such offer or solicitation cannot be made. Stated square footage and dimensions are measured to the exterior boundaries of the exterior walls and the centerline of interior demising walls and in fact vary from the square footage and dimensions that would be determined by using the description and definition of the "Unit" set forth in the Declaration (which generally only includes the interior airspace between the perimeter walls and excludes all interior structural components and other common elements). This method is generally used in sales materials and is provided to allow a prospective buyer to compare the Unit with units in other condominium projects that utilize the same method. For your reference, the area of the Unit, determined in accordance with these defined unit boundaries, is xxx sq ft. Measurements of rooms set forth on this floor plan are generally taken at the furthest points of each given room (as if the room were a perfect rectangle), without regard for any cutouts or variations. Accordingly, the area of the actual room will typically be smaller than the product obtained by multiplying the stated length and width. All dimensions are estimates which will vary with actual construction, and all floor plans, specifications and other development plans are subject to change and will not necessarily accurately reflect the final plans and specifications for the development. All depictions of appliances, counters, sinks, floor coverings and other matters of detail, including, without limitation, items of finish and decoration, are conceptual only and are not necessarily included in each Unit.

Residence N

ONE-BEDROOM + DEN / TWO-BATHROOMS

Level 5

INTERIOR	878 S.F.	81.6 S.M.
TERRACE	385 S.F.	35.8 S.M.
TOTAL	1,263 S.F.	117.4 S.M.



NEXO
RESIDENCES
NORTH MIAMI BEACH

SECTION 01



ORAL REPRESENTATIONS CANNOT BE RELIED UPON AS CORRECTLY STATING REPRESENTATIONS OF THE DEVELOPER. FOR CORRECT REPRESENTATIONS, MAKE REFERENCE TO THE DOCUMENTS THAT ARE REQUIRED BY SECTION 718.503, FLORIDA STATUTES, TO BE FURNISHED BY DEVELOPER TO A BUYER OR LESSEE. The Developer is 12899 Biscayne Associates, L.L.C. which has a right to use the trademark names and logos of Fortune International Group and Blue Road LLC. This is not an offer to sell, or solicitation of offers to buy, in states where such offer or solicitation cannot be made. Stated square footages and dimensions are measured to the exterior boundaries of the exterior walls and the centerline of interior demising walls and in fact vary from the square footage and dimensions that would be determined by using the description and definition of the "Unit" set forth in the Declaration (which generally only includes the interior airspace between the perimeter walls and excludes all interior structural components and other common elements). This method is generally used in sales materials and is provided to allow a prospective buyer to compare the Units with units in other condominium projects that utilize the same method. For your reference, the area of the Unit, determined in accordance with the defined unit boundaries, is xxx sq. ft. Measurements of rooms set forth on this floor plan are generally taken at the furthest points of each given room (as if the room were a perfect rectangle), without regard for any cutouts or variations. Accordingly, the area of the actual room will typically be smaller than the product obtained by multiplying the stated length and width. All dimensions are estimates which will vary with actual construction, and all floor plans, specifications and other development plans are subject to change and will not necessarily accurately reflect the final plans and specifications for the development. All depictions of appliances, counters, soffits, floor coverings and other matters of detail, including, without limitation, items of finish and decoration, are conceptual only and are not necessarily included in each Unit.

Residence 0

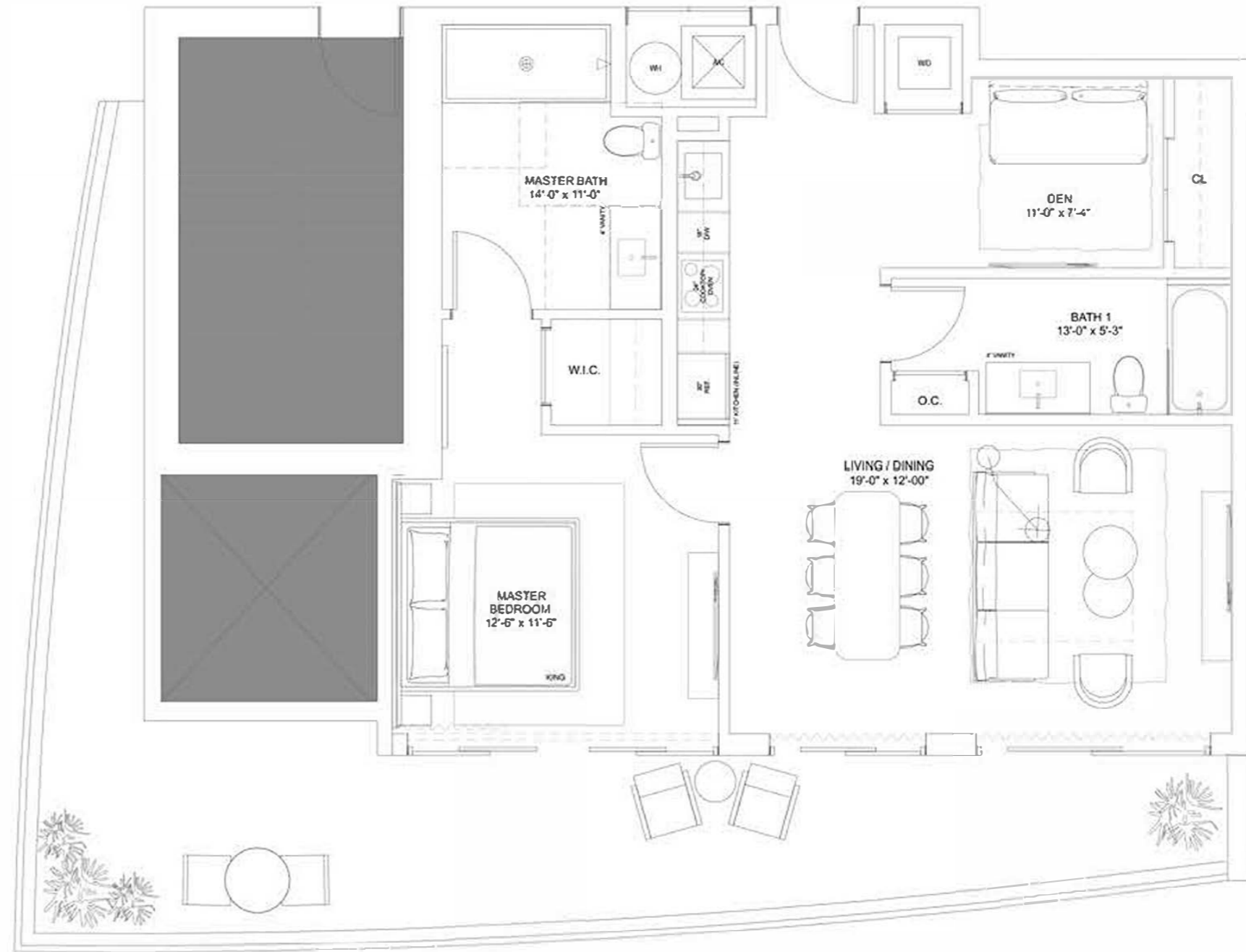
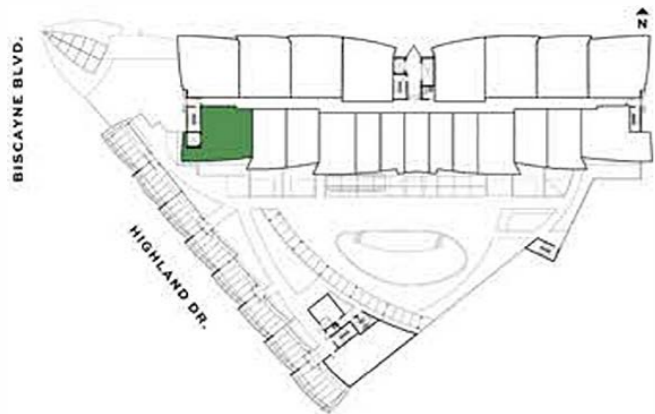
ONE-BEDROOM + DEN / TWO-BATHROOMS

Level 6

INTERIOR	906 S.F.	84.2 S.M.
TERRACE	379 S.F.	35.2 S.M.
TOTAL	1,285 S.F.	119.4 S.M.



NEXO
RESIDENCES
NORTH MIAMI BEACH



SECTION 01



ORAL REPRESENTATIONS CANNOT BE RELIED UPON AS CORRECTLY STATING REPRESENTATIONS OF THE DEVELOPER. FOR CORRECT REPRESENTATIONS, MAKE REFERENCE TO THE DOCUMENTS THAT ARE REQUIRED BY SECTION 718.503, FLORIDA STATUTES, TO BE FURNISHED BY DEVELOPER TO A BUYER OR LESSEE. The Developer is 12809 Biscayne Associates, L.L.C. which has a right to use the trademark names and logos of Fortune International Group and Blue Road L.L.C. This is not an offer to sell, or solicitation of offers to buy, in states where such offer or solicitation cannot be made. Stated square footage and dimensions are measured to the exterior boundaries of the exterior walls and the centerline of interior demising walls and in fact vary from the square footage and dimensions that would be determined by using the description and definition of the "Unit" set forth in the Declaration (which generally only includes the interior aspect between the perimeter walls and excludes all interior structural components and other common elements). This method is generally used in sales materials and is provided to allow a prospective buyer to compare the Units with units in other condominium projects that utilize the same method. For your reference, the area of the Unit, determined in accordance with the defined unit boundaries, is xxx sq ft. Measurements of rooms set forth on this floor plan are generally taken at the furthest points of each given room (as if the room were a perfect rectangle), without regard for any cutouts or variations. Accordingly, the area of the actual room will typically be smaller than the product obtained by multiplying the stated length and width. All dimensions are estimates which will vary with actual construction, and all floor plans, specifications and other development plans are subject to change and will not necessarily accurately reflect the final plans and specifications for the development. All depictions of appliances, counters, sinks, floor coverings and other matters of detail, including, without limitation, items of finish and decoration, are conceptual only and are not necessarily included in each Unit.

Townhome D

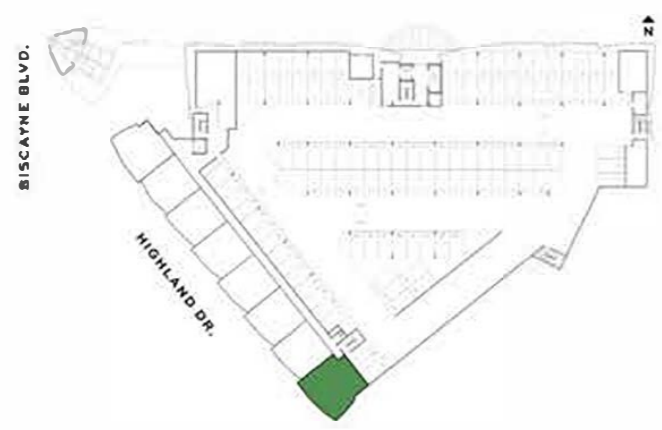
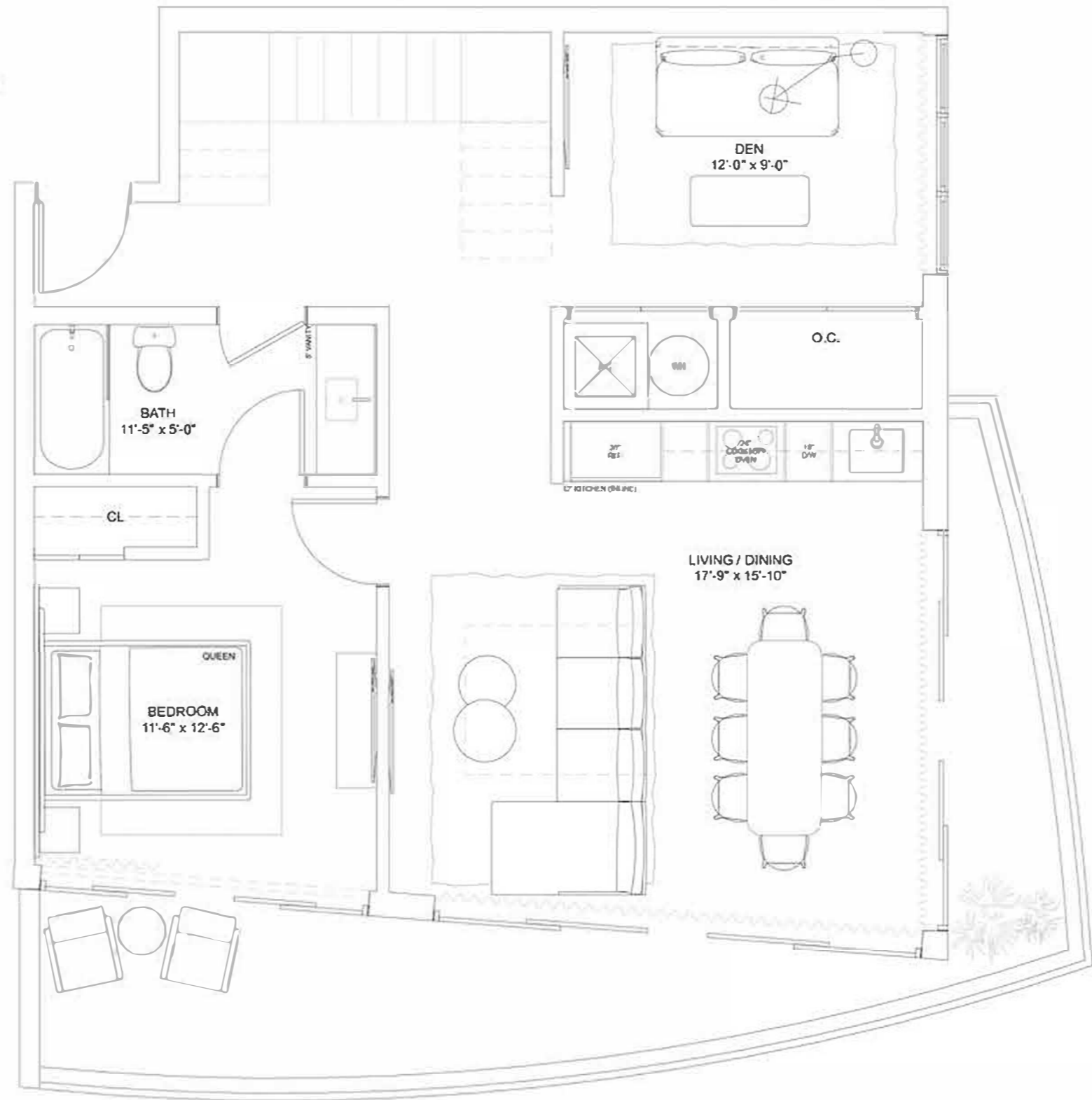
THREE-BEDROOMS + DEN / THREE-BATHROOMS

Level 2

INTERIOR	1,840 S.F.	170.9 S.M.
TERRACE	455 S.F.	42.3 S.M.
TOTAL	2,295 S.F.	213.2 S.M.



NEXO
RESIDENCES
NORTH MIAMI BEACH



ORAL REPRESENTATIONS CANNOT BE RELIED UPON AS CORRECTLY STATING REPRESENTATIONS OF THE DEVELOPER. FOR CORRECT REPRESENTATIONS, MAKE REFERENCE TO THE DOCUMENTS THAT ARE REQUIRED BY SECTION 218.003, FLORIDA STATUTES, TO BE FURNISHED BY A DEVELOPER TO A BUYER OR LESSEE. The Developer is 12000 Biscayne Associates, LLC which has a right to use the trademark names and logos of Fortune International Group and Blue Road LLC. This is not an offer to sell, or solicitation of offers to buy, in states where such offer or solicitation cannot be made. Stated square footages and dimensions are measured to the exterior boundaries of the exterior walls and the center line of interior demarcating walls and in fact vary from the square footage and dimensions that would be determined by using the description and definition of the "Unit" set forth in the Declaration (which generally only includes the interior airspace between the perimeter walls and excludes all interior structural components and other common elements). This method is generally used in sales materials and is provided to allow a prospective buyer to compare the Units with units in other condominium projects that utilize the same method. For your reference, the area of the Unit, determined in accordance with these defined unit boundaries, is 2,295 sq. ft. Measurements of rooms set forth on this floor plan are generally taken at the farthest points of each given room (as if the room were a perfect rectangle), without regard for any closets or variations. Accordingly, the area of the actual room will typically be smaller than the product obtained by multiplying the stated length and width. All dimensions are estimates which will vary with actual construction, and all floor plans, specifications and other development plans are subject to change and will not necessarily accurately reflect the final plans and specifications for the development. All depictions of appliances, counters, soffits, floor coverings and other matters of detail, including, without limitation, items of finish and decoration, are conceptual only and are not necessarily included in each Unit.

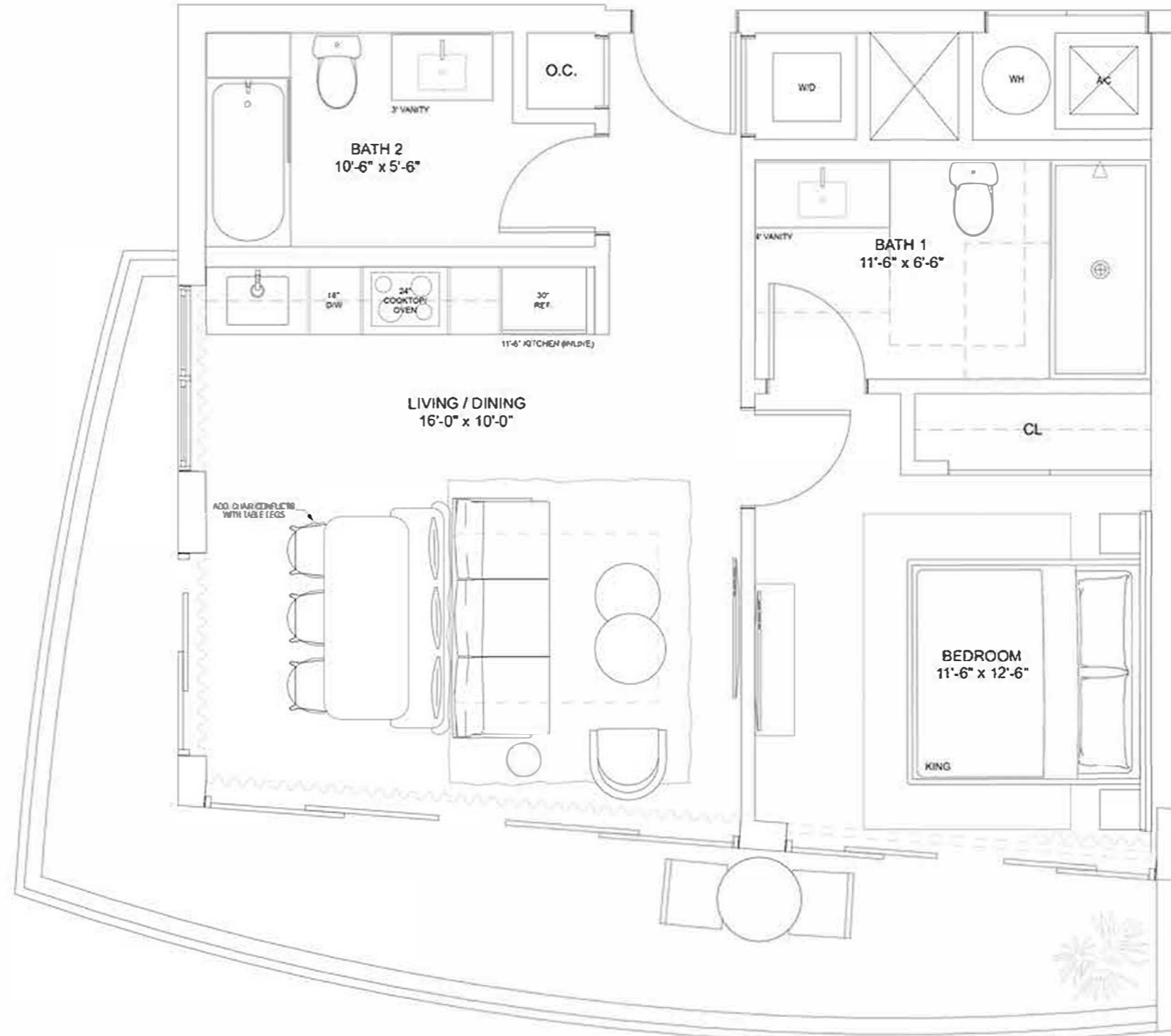
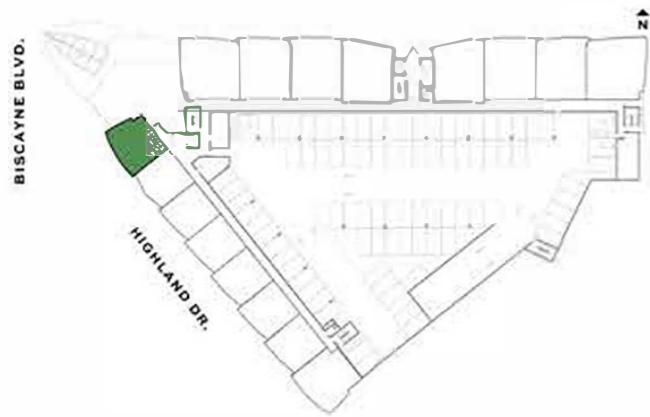


Residence E

ONE-BEDROOM / TWO-BATHROOMS

Levels 3 & 4

INTERIOR	715 S.F.	66.4 S.M.
TERRACE	224 S.F.	20.8 S.M.
TOTAL	939 S.F.	87.2 S.M.



NEXO
RESIDENCES
NORTH MIAMI BEACH

10/15/2024



ORAL REPRESENTATIONS CANNOT BE RELIED UPON AS CORRECTLY STATING REPRESENTATIONS OF THE DEVELOPER. FOR CORRECT REPRESENTATIONS, MAKE REFERENCE TO THE DOCUMENTS THAT ARE REQUIRED BY SECTION 718.603, FLORIDA STATUTES, TO BE FURNISHED BY A DEVELOPER TO A BUYER OR LESSEE. The Developer is 13000 Biscayne Associates, LLC, which has a right to use the trademarks and logos of Fortune International Group and Blue Road LLC. This is not an offer to sell, or solicitation of offers to buy, in states where such offer or solicitation cannot be made. Stated square footages and dimensions are measured to the exterior boundaries of the exterior walls and the centerline of interior demarcating walls and in fact vary from the square footage and dimensions that would be determined by using the description and definition of the "Unit" set forth in the Declaration (which generally only includes the interior airspace between the perimeter walls and excludes all interior structural components and other common elements). This method is generally used in sales materials and is provided to allow a prospective buyer to compare the units with units in other condominium projects that utilize the same method. For your reference, the area of the Unit, determined in accordance with these defined unit boundaries, is xxx sq ft. Measurements of rooms set forth on this floor plan are generally taken at the furthest points of each given room (as if the room were a perfect rectangle), without regard for any cutouts or variations. Accordingly, the area of the actual room will typically be smaller than the product obtained by multiplying the stated length and width. All dimensions are estimates which will vary with actual construction, and all floor plans, specifications and other development plans are subject to change and will not necessarily accurately reflect the final plans and specifications for the development. All depictions of appliances, counters, soffits, floor coverings and other matters of detail, including, without limitation, items of finish and decoration, are conceptual only and are not necessarily included in each Unit.