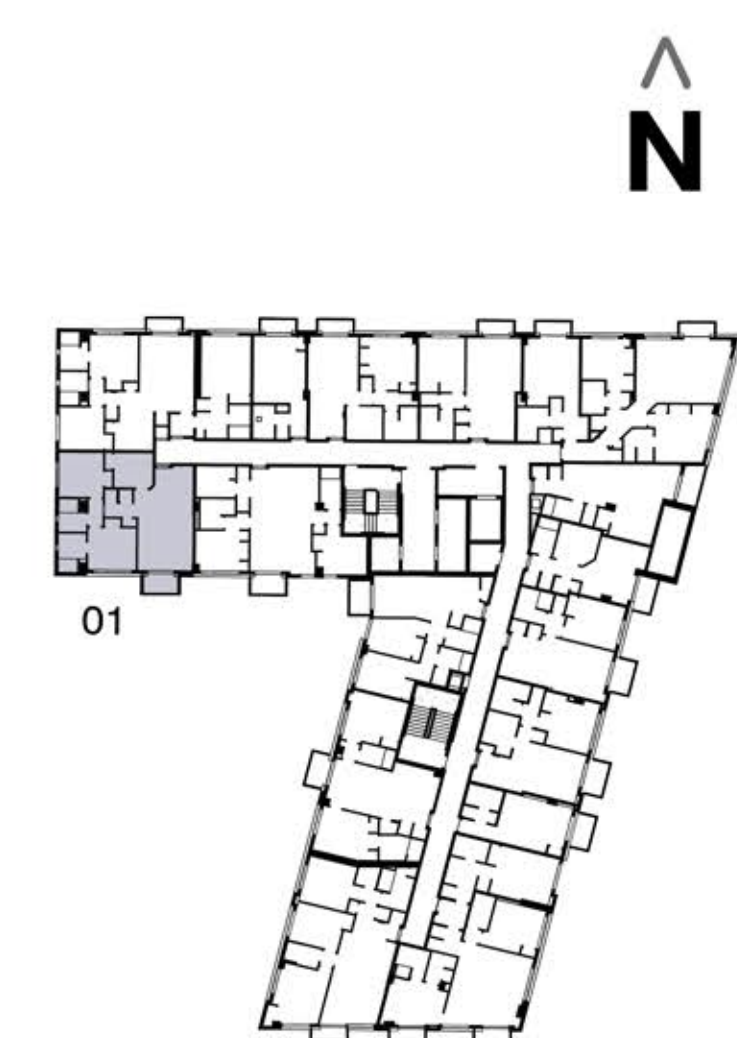


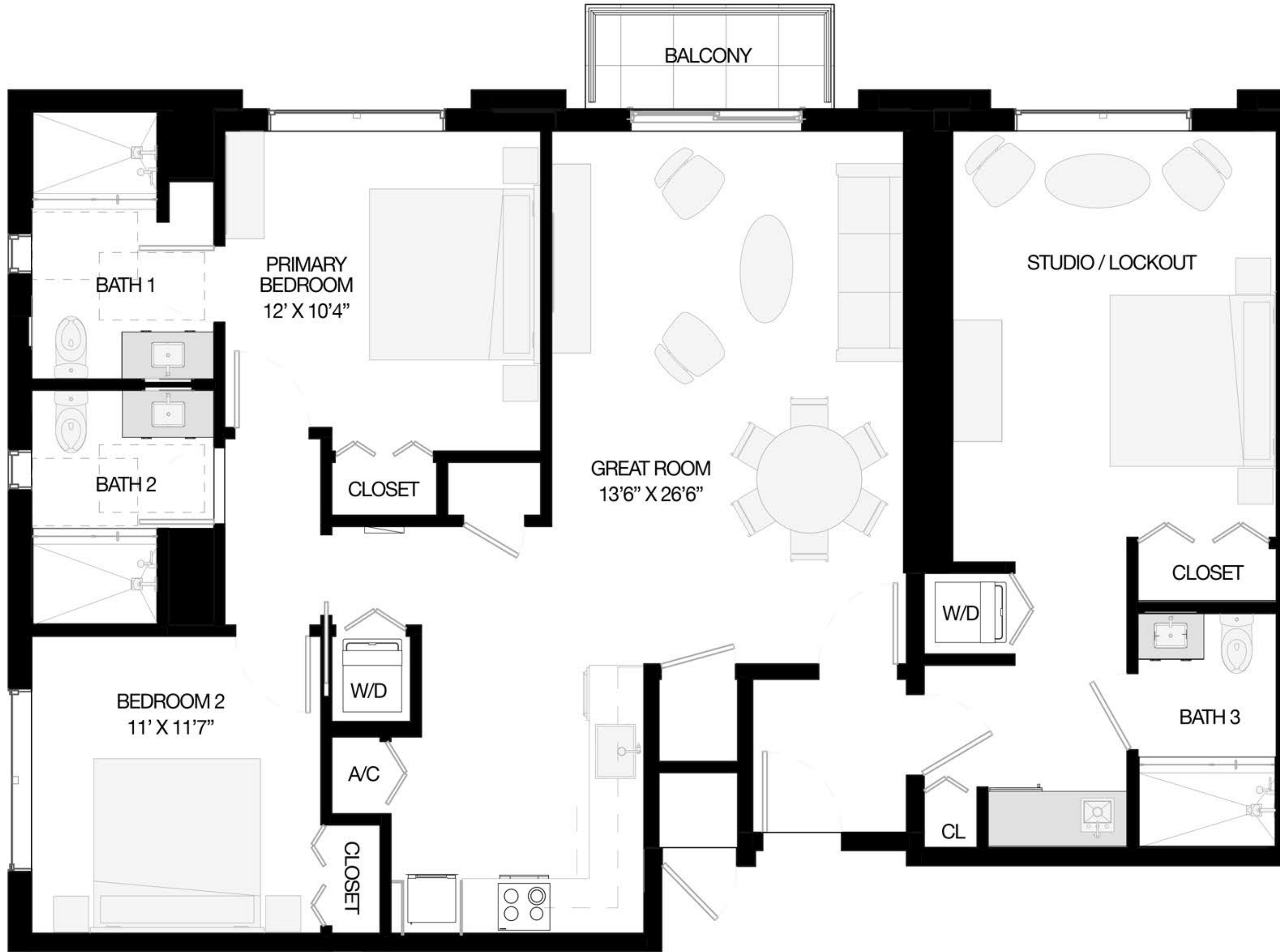
INTERIOR: 1,068 SF 99 M²
BALCONY: 52 SF 5 M²
TOTAL: 1,120 SF 104 M²



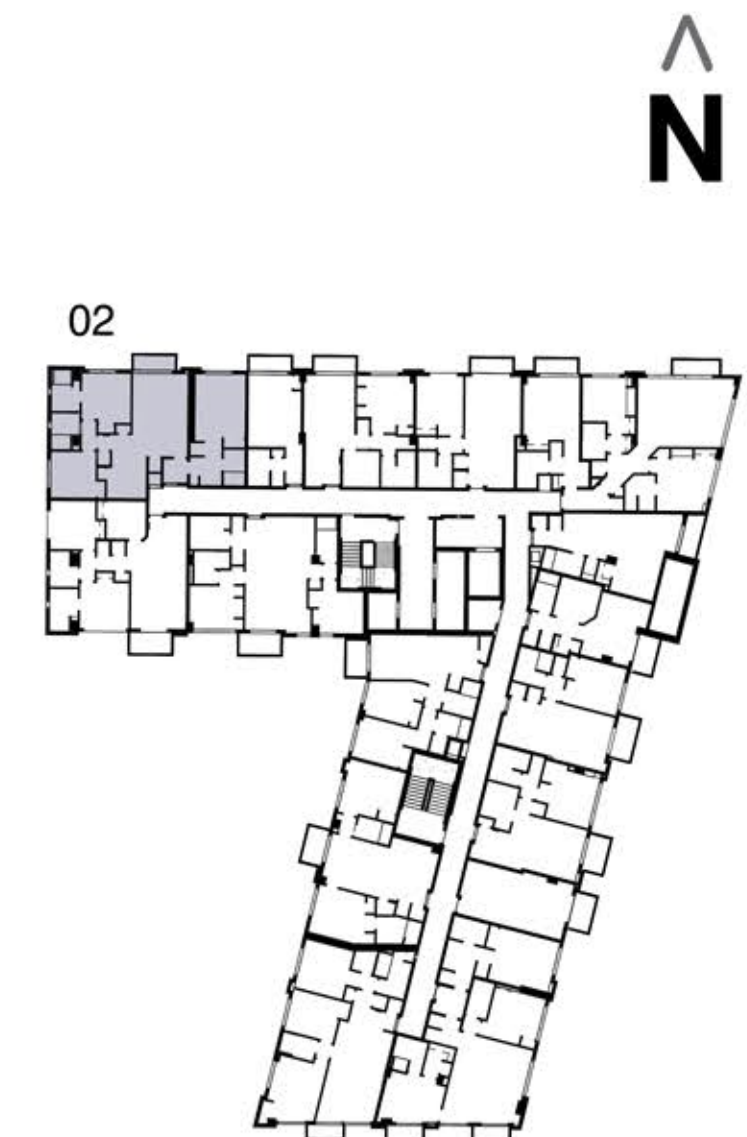
MODEL B3
2 BEDROOMS + DEN / 2 BATHS
FLOORS 3-12

All square footages and dimensions, including (without limitation) ceiling heights, are estimates based on preliminary plans and will vary with actual construction. All floor plans, specifications and other development plans are proposed and conceptual only and are subject to change and will not necessarily accurately reflect the final plans and specifications. Stated square footages and dimensions are measured to the exterior boundaries of the exterior walls and the centerline of interior demising walls between units and in fact vary from the square footages and dimensions that would be determined by using the description and definition of the "Unit" set forth in the Declaration, which generally only includes the interior airspace between the perimeter walls and excludes all interior structural components and other common elements or shared facilities. The method of measurement used herein is generally found in sales materials and is provided to allow a prospective buyer to compare the Units with units in other condominium projects that utilize the same method. For the dimensions of the Unit determined as set forth in the Declaration refer to the prospectus documents. Measurements of rooms set forth on this floor plan are generally taken at the farthest points of each given room (as described above and as if the room were a perfect rectangle), without regard for any cutouts, soffits or other variations. Accordingly, the interior air space dimensions of the actual room will be smaller than the product obtained by multiplying the stated length and width. Terraces and other exterior areas are not part of the Unit.



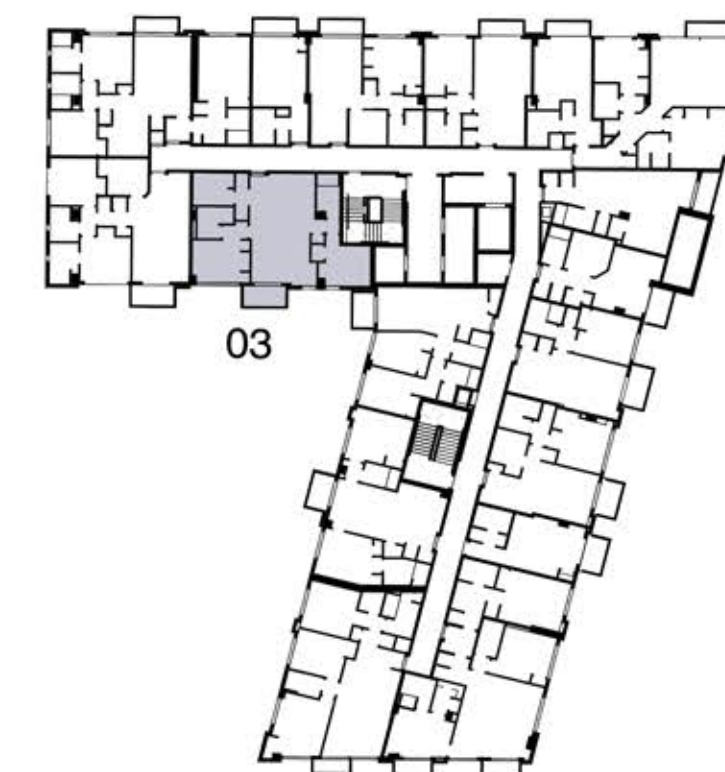


INTERIOR:	1,441 SF	134 M ²
BALCONY:	37 SF	3.5 M ²
TOTAL:	1,478 SF	137 M²



MODEL C3 (w/ LOCKOUT UNIT)
3 BEDROOMS / 3 BATHS
FLOORS 3-12

INTERIOR: 1,148 SF 107 M²
BALCONY: 52 SF 5 M²
TOTAL: 1,200 SF 111 M²



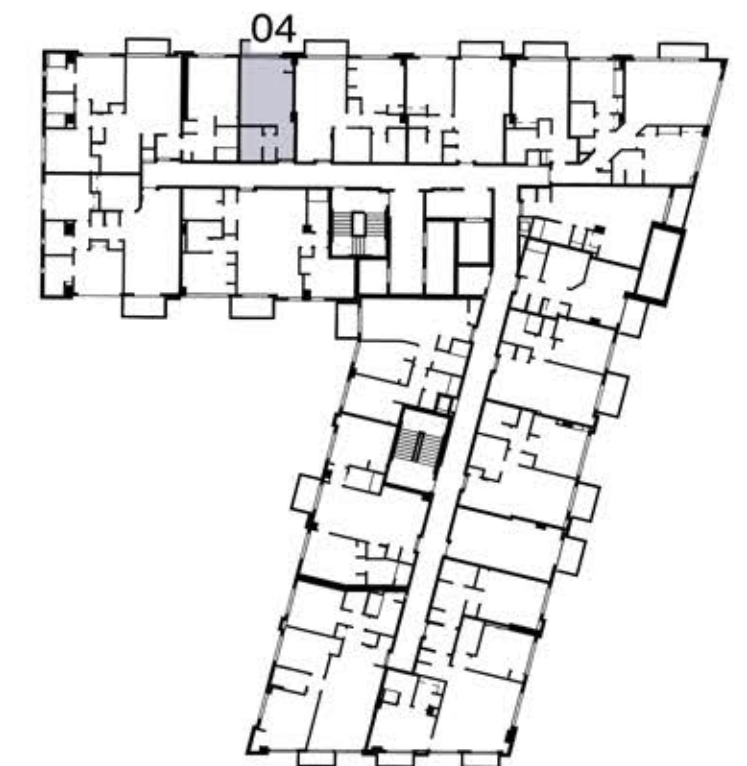
MODEL B7
2 BEDROOMS + DEN / 2 BATHS
FLOORS 4-12



All square footages and dimensions, including (without limitation) ceiling heights, are estimates based on preliminary plans and will vary with actual construction. All floor plans, specifications and other development plans are proposed and conceptual only and are subject to change and will not necessarily accurately reflect the final plans and specifications. Stated square footages and dimensions are measured to the exterior boundaries of the exterior walls and the centerline of interior demising walls between units and in fact vary from the square footages and dimensions that would be determined by using the description and definition of the "Unit" set forth in the Declaration, which generally only includes the interior airspace between the perimeter walls and excludes all interior structural components and other common elements or shared facilities. The method of measurement used herein is generally found in sales materials and is provided to allow a prospective buyer to compare the Units with units in other condominium projects that utilize the same method. For the dimensions of the Unit determined as set forth in the Declaration refer to the prospectus documents. Measurements of rooms set forth on this floor plan are generally taken at the farthest points of each given room (as described above and as if the room were a perfect rectangle), without regard for any cutouts, soffits or other variations. Accordingly, the interior air space dimensions of the actual room will be smaller than the product obtained by multiplying the stated length and width. Terraces and other exterior areas are not part of the Unit.

04 LINE

INTERIOR:	385 SF	36 M ²
BALCONY:	37 SF	3.5 M ²
TOTAL:	422 SF	39 M²



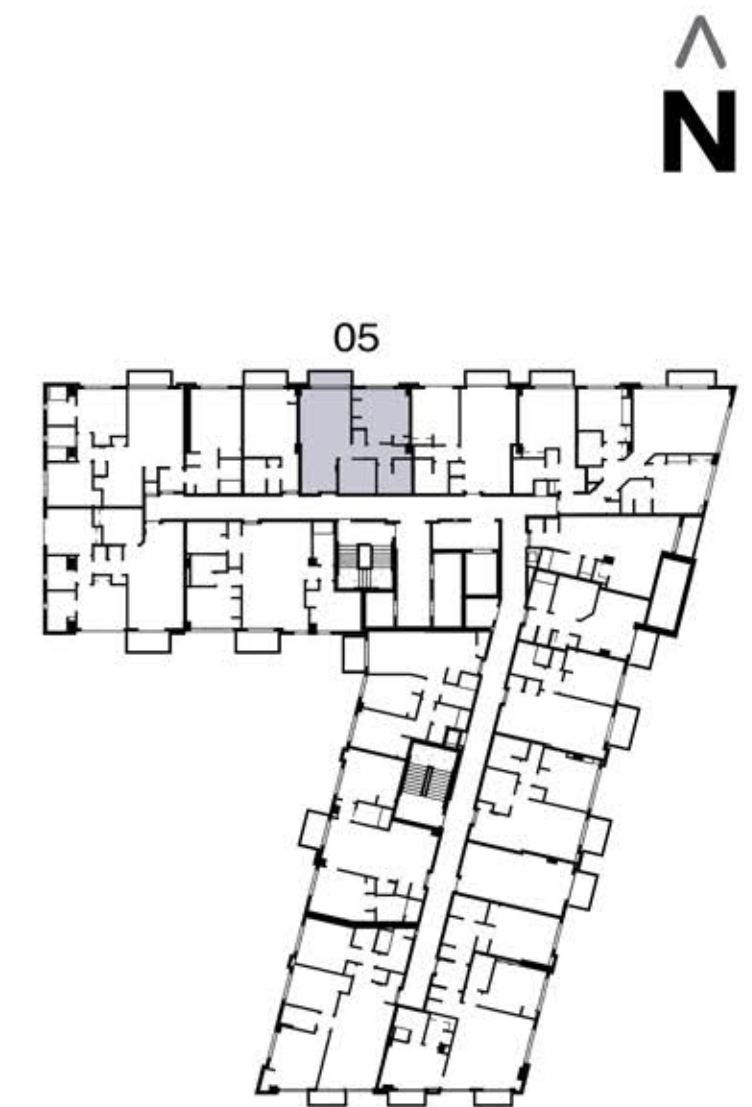
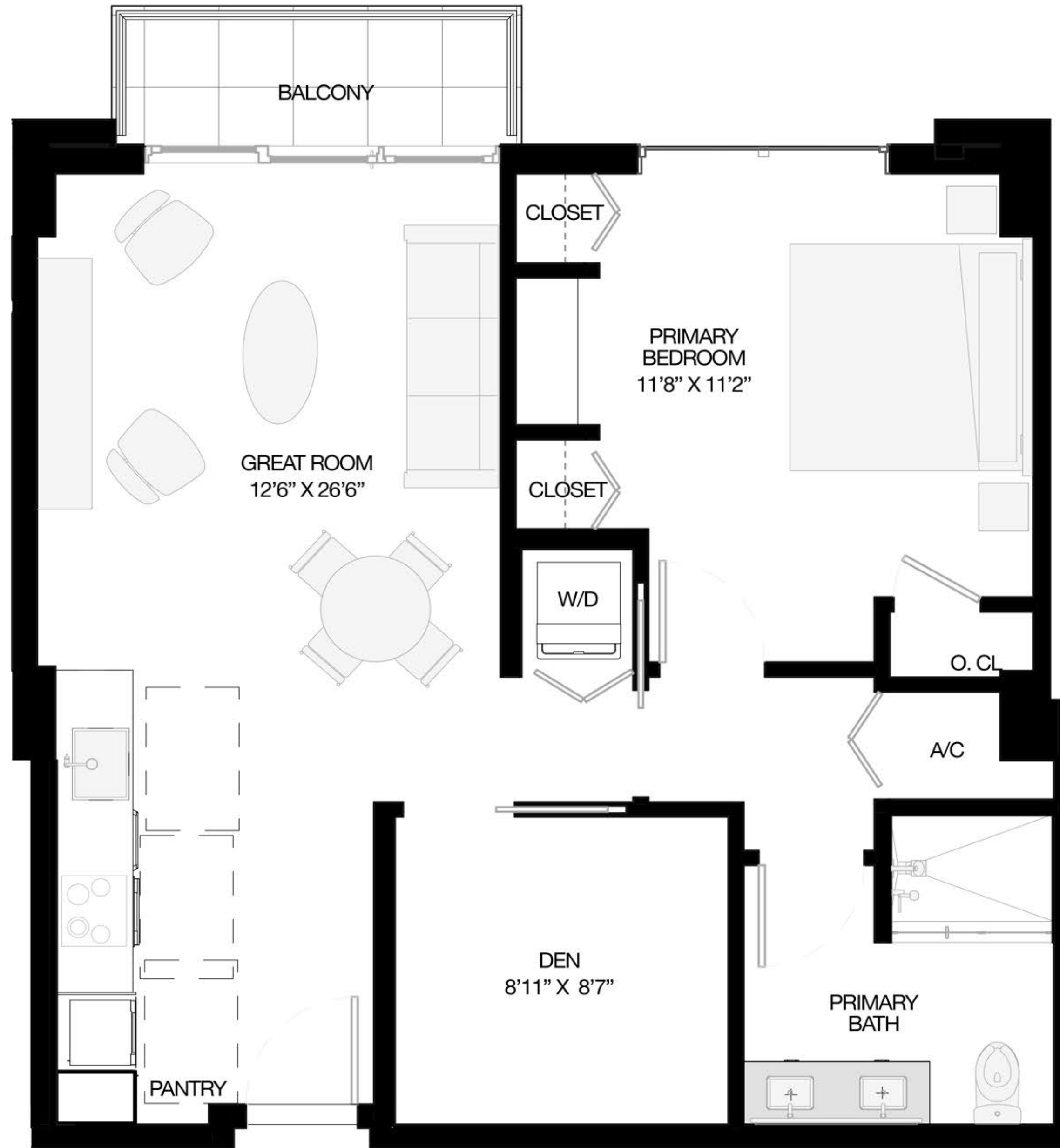
MODEL S3
STUDIO / 1 BATH
FLOORS 3-12



All square footages and dimensions, including (without limitation) ceiling heights, are estimates based on preliminary plans and will vary with actual construction. All floor plans, specifications and other development plans are proposed and conceptual only and are subject to change and will not necessarily accurately reflect the final plans and specifications. Stated square footages and dimensions are measured to the exterior boundaries of the exterior walls and the centerline of interior demising walls between units and in fact vary from the square footages and dimensions that would be determined by using the description and definition of the "Unit" set forth in the Declaration, which generally only includes the interior airspace between the perimeter walls and excludes all interior structural components and other common elements or shared facilities. The method of measurement used herein is generally found in sales materials and is provided to allow a prospective buyer to compare the Units with units in other condominium projects that utilize the same method. For the dimensions of the Unit determined as set forth in the Declaration refer to the prospectus documents. Measurements of rooms set forth on this floor plan are generally taken at the farthest points of each given room (as described above and as if the room were a perfect rectangle), without regard for any cutouts, soffits or other variations. Accordingly, the interior air space dimensions of the actual room will be smaller than the product obtained by multiplying the stated length and width. Terraces and other exterior areas are not part of the Unit.

05 LINE

INTERIOR:	770 SF	72 M ²
BALCONY:	43 SF	4 M ²
TOTAL:	813 SF	76 M²

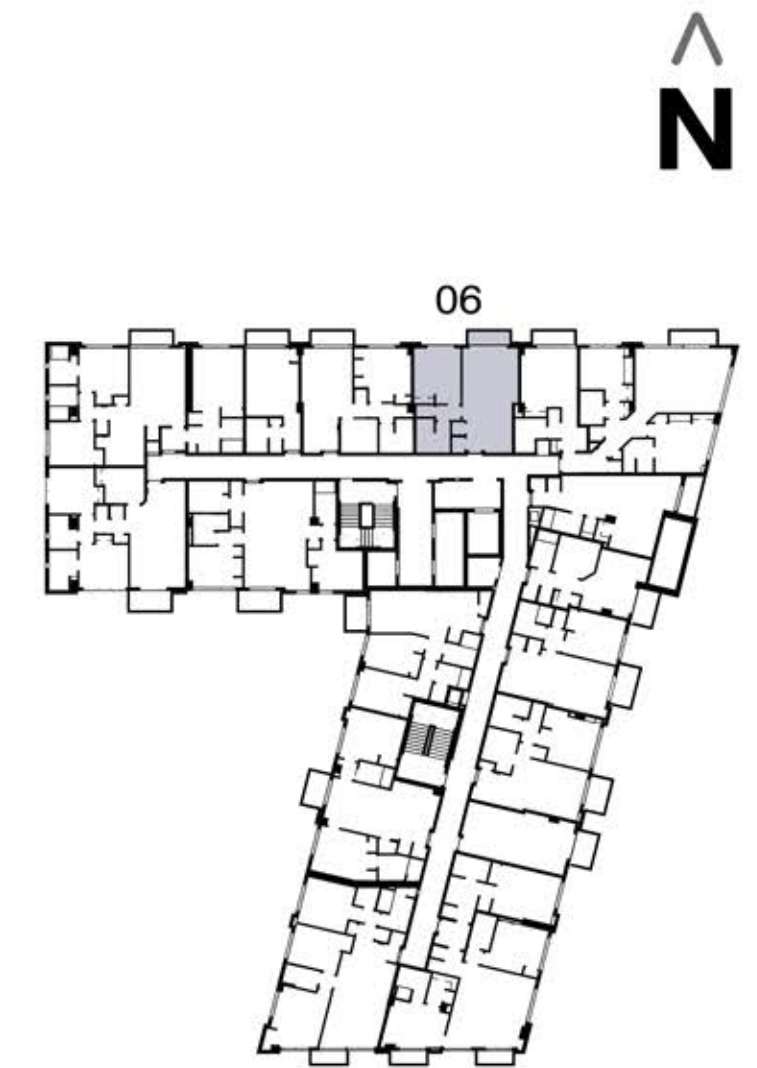
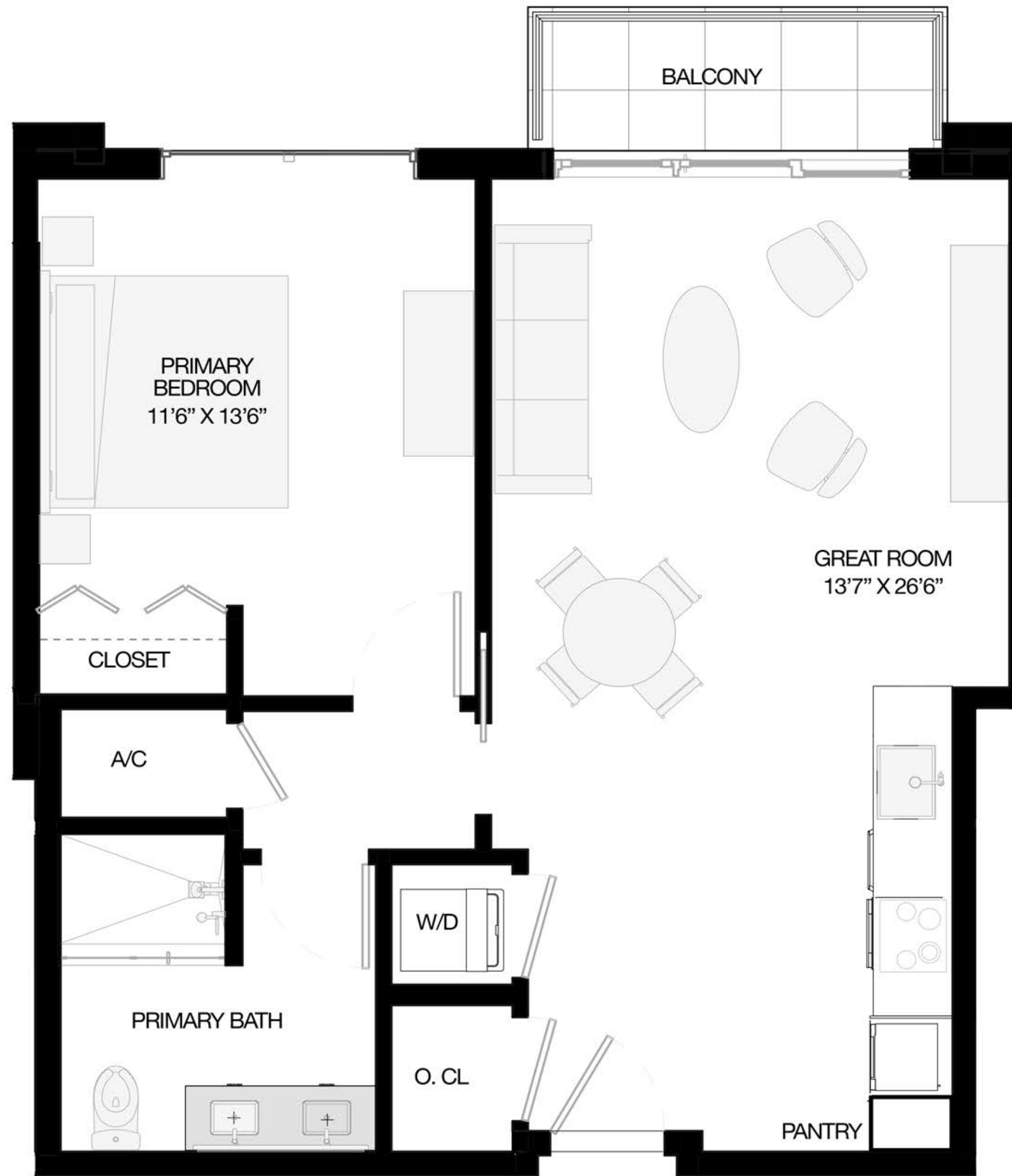


MODEL A1 1 BEDROOM + DEN / 1 BATH FLOORS 3-12



06 LINE

INTERIOR:	706 SF	66 M ²
BALCONY:	43 SF	4 M ²
TOTAL:	749 SF	70 M²

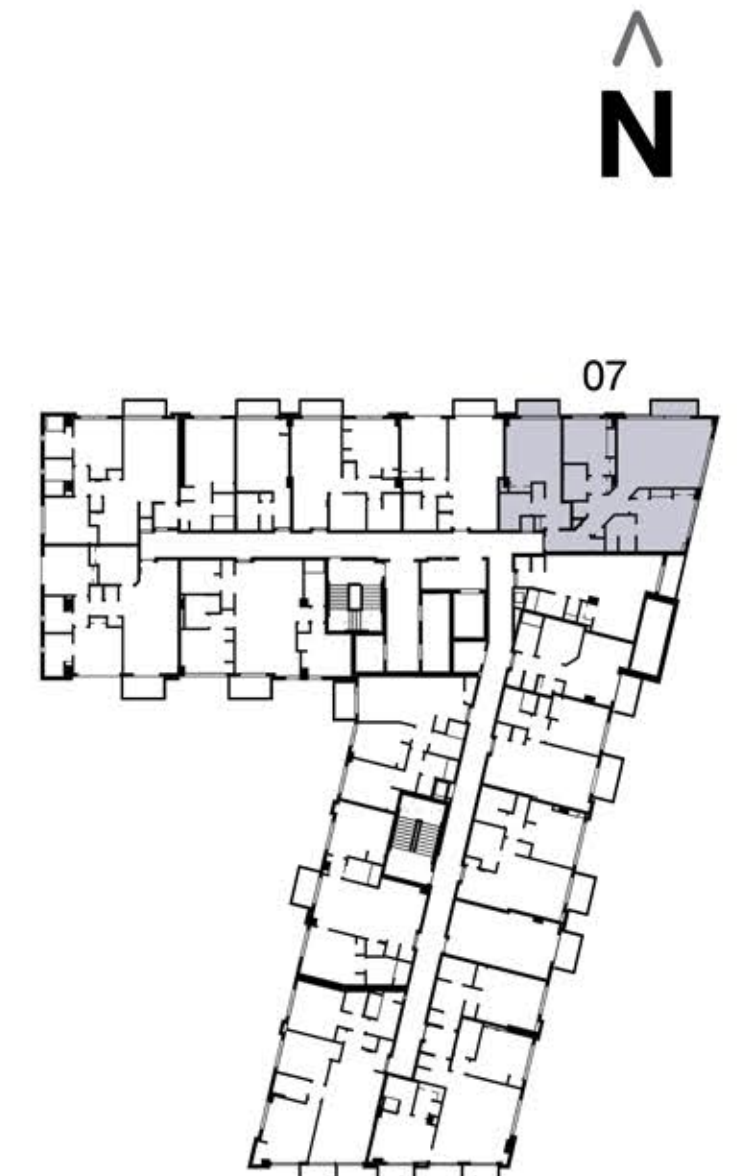


MODEL A4 1 BEDROOM / 1 BATH FLOORS 3-12

All square footages and dimensions, including (without limitation) ceiling heights, are estimates based on preliminary plans and will vary with actual construction. All floor plans, specifications and other development plans are proposed and conceptual only and are subject to change and will not necessarily accurately reflect the final plans and specifications. Stated square footages and dimensions are measured to the exterior boundaries of the exterior walls and the centerline of interior demising walls between units and in fact vary from the square footages and dimensions that would be determined by using the description and definition of the "Unit" set forth in the Declaration, which generally only includes the interior airspace between the perimeter walls and excludes all interior structural components and other common elements or shared facilities. The method of measurement used herein is generally found in sales materials and is provided to allow a prospective buyer to compare the Units with units in other condominium projects that utilize the same method. For the dimensions of the Unit determined as set forth in the Declaration refer to the prospectus documents. Measurements of rooms set forth on this floor plan are generally taken at the farthest points of each given room (as described above and as if the room were a perfect rectangle), without regard for any cutouts, soffits or other variations. Accordingly, the interior air space dimensions of the actual room will be smaller than the product obtained by multiplying the stated length and width. Terraces and other exterior areas are not part of the Unit.

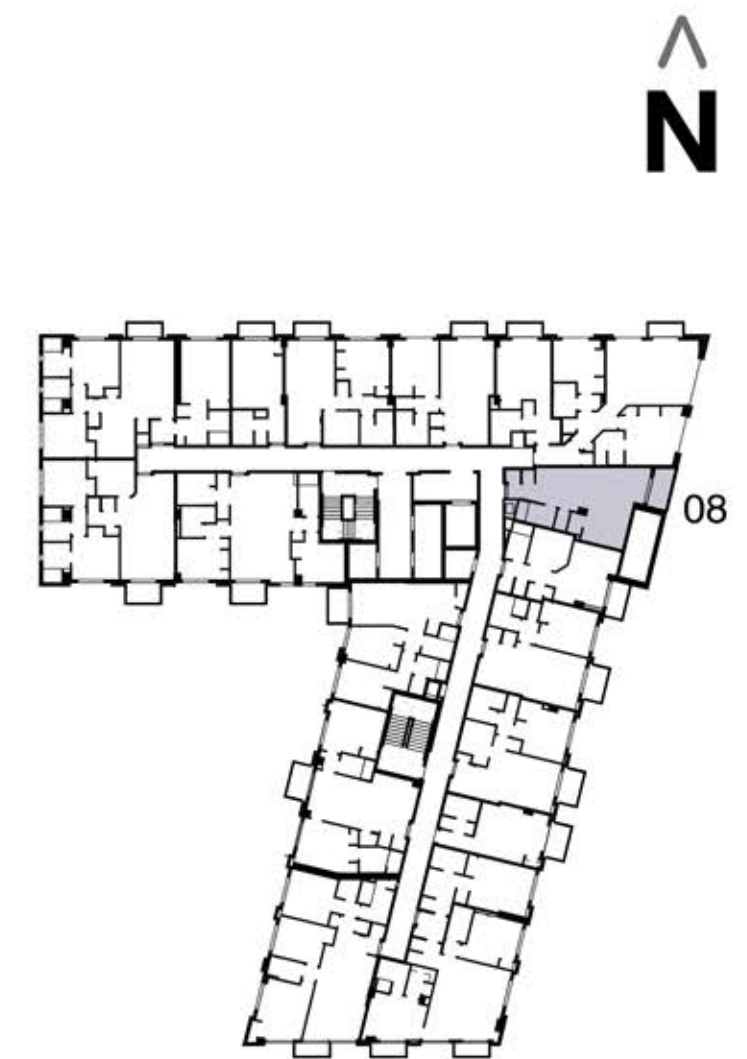
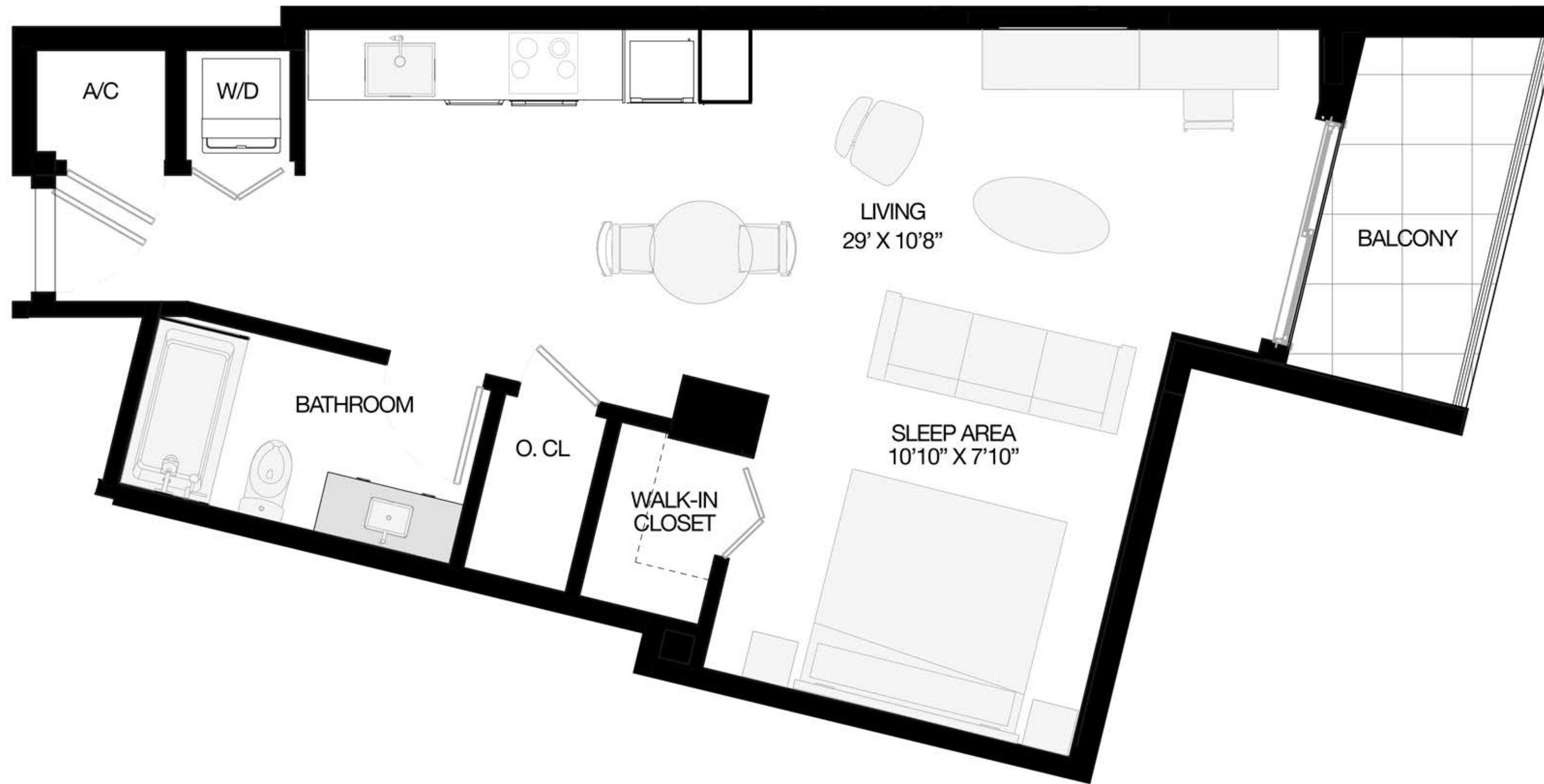


INTERIOR:	1,600 SF	149 M ²
BALCONY:	90 SF	8 M ²
TOTAL:	1,690 SF	157 M²



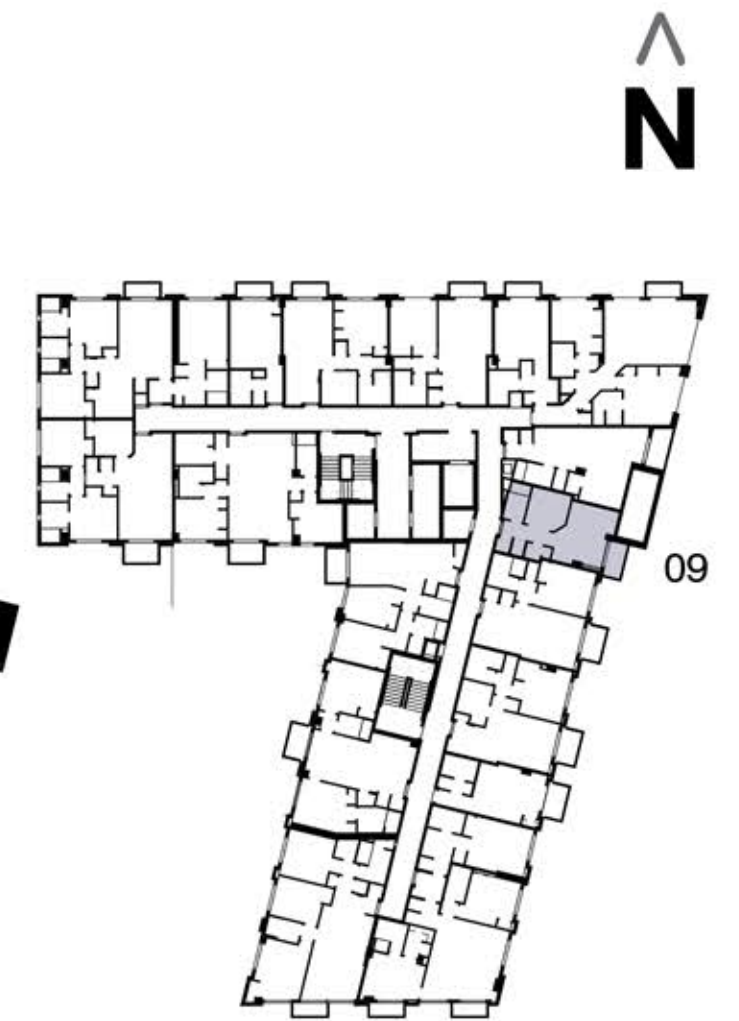
MODEL C1
3 BEDROOMS / 3 BATHS (WITH LOCKOUT OPTION)
FLOORS 3-12

INTERIOR:	599 SF	56 M ²
BALCONY:	62 SF	6 M ²
TOTAL:	662 SF	62 M²



MODEL S2
STUDIO / 1 BATH
FLOORS 3-12

INTERIOR:	510 SF	48 M ²
BALCONY	45 SF	4 M ²
TOTAL:	554 SF	52 M²



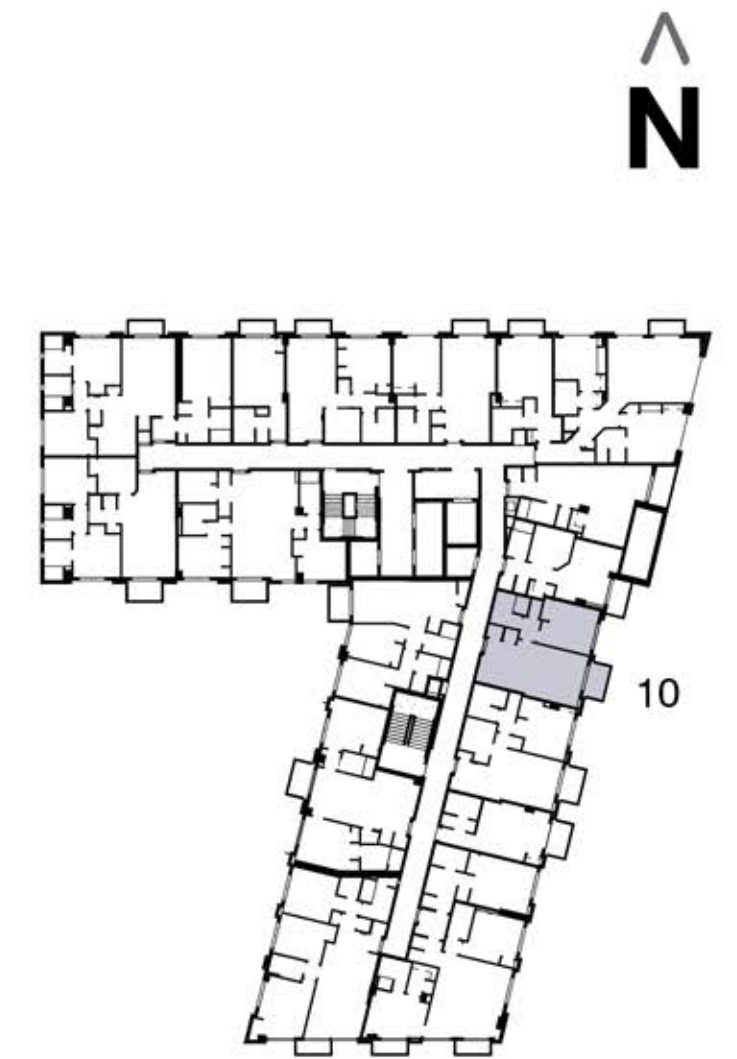
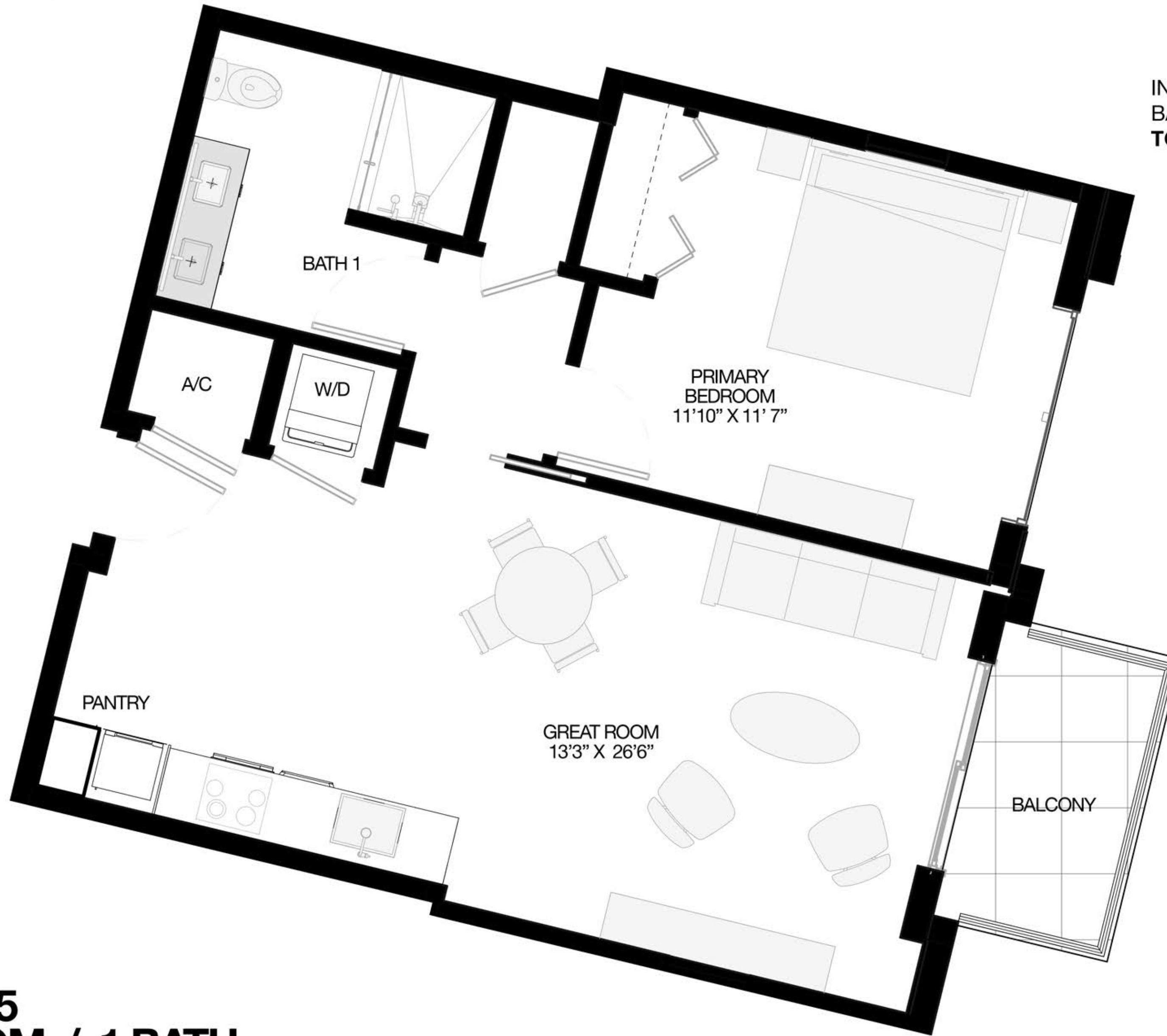
MODEL S1
STUDIO / 1 BATH
FLOORS 3-12



All square footages and dimensions, including (without limitation) ceiling heights, are estimates based on preliminary plans and will vary with actual construction. All floor plans, specifications and other development plans are proposed and conceptual only and are subject to change and will not necessarily accurately reflect the final plans and specifications. Stated square footages and dimensions are measured to the exterior boundaries of the exterior walls and the centerline of interior demising walls between units and in fact vary from the square footages and dimensions that would be determined by using the description and definition of the "Unit" set forth in the Declaration, which generally only includes the interior airspace between the perimeter walls and excludes all interior structural components and other common elements or shared facilities. The method of measurement used herein is generally found in sales materials and is provided to allow a prospective buyer to compare the Units with units in other condominium projects that utilize the same method. For the dimensions of the Unit determined as set forth in the Declaration refer to the prospectus documents. Measurements of rooms set forth on this floor plan are generally taken at the farthest points of each given room (as described above and as if the room were a perfect rectangle), without regard for any cutouts, soffits or other variations. Accordingly, the interior air space dimensions of the actual room will be smaller than the product obtained by multiplying the stated length and width. Terraces and other exterior areas are not part of the Unit.

10 LINE

INTERIOR:	707 SF	66 M ²
BALCONY:	52 SF	5 M ²
TOTAL:	759 SF	71 M²



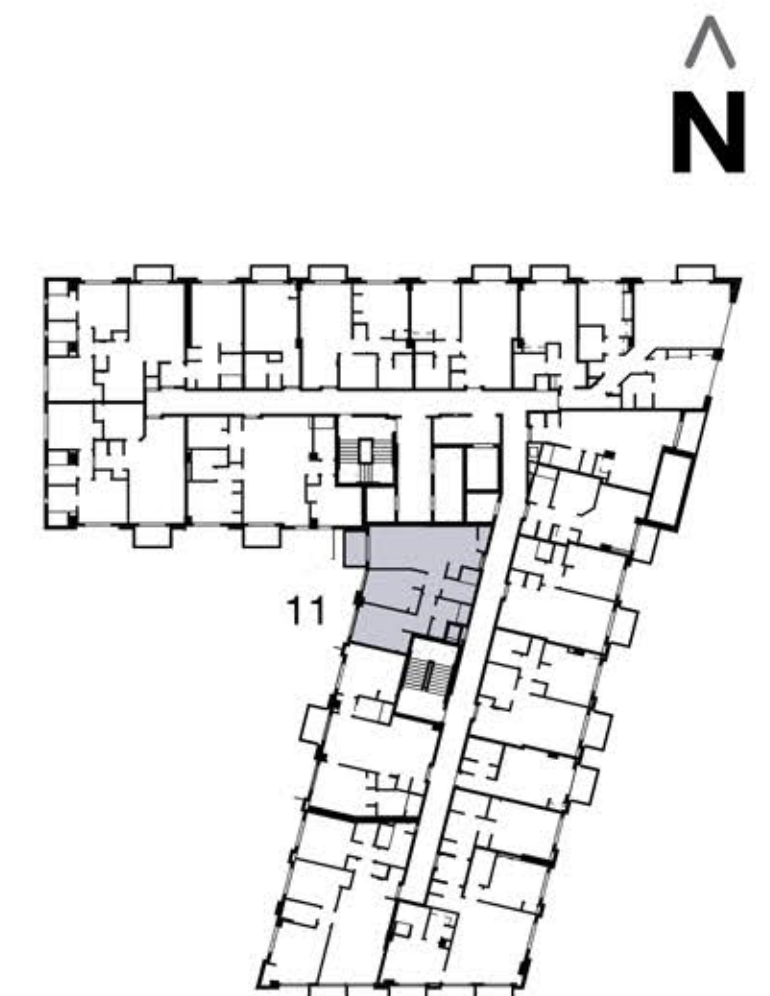
MODEL A5
1 BEDROOM / 1 BATH
FLOORS 3-12



All square footages and dimensions, including (without limitation) ceiling heights, are estimates based on preliminary plans and will vary with actual construction. All floor plans, specifications and other development plans are proposed and conceptual only and are subject to change and will not necessarily accurately reflect the final plans and specifications. Stated square footages and dimensions are measured to the exterior boundaries of the exterior walls and the centerline of interior demising walls between units and in fact vary from the square footages and dimensions that would be determined by using the description and definition of the "Unit" set forth in the Declaration, which generally only includes the interior airspace between the perimeter walls and excludes all interior structural components and other common elements or shared facilities. The method of measurement used herein is generally found in sales materials and is provided to allow a prospective buyer to compare the Units with units in other condominium projects that utilize the same method. For the dimensions of the Unit determined as set forth in the Declaration refer to the prospectus documents. Measurements of rooms set forth on this floor plan are generally taken at the farthest points of each given room (as described above and as if the room were a perfect rectangle), without regard for any cutouts, soffits or other variations. Accordingly, the interior air space dimensions of the actual room will be smaller than the product obtained by multiplying the stated length and width. Terraces and other exterior areas are not part of the Unit.

11 LINE

INTERIOR:	900 SF	84 M ²
BALCONY:	52 SF	5 M ²
TOTAL:	952 SF	88 M²



MODEL B6
2 BEDROOMS / 2 BATHS
FLOORS 3-12

All square footages and dimensions, including (without limitation) ceiling heights, are estimates based on preliminary plans and will vary with actual construction. All floor plans, specifications and other development plans are proposed and conceptual only and are subject to change and will not necessarily accurately reflect the final plans and specifications. Stated square footages and dimensions are measured to the exterior boundaries of the exterior walls and the centerline of interior demising walls between units and in fact vary from the square footages and dimensions that would be determined by using the description and definition of the "Unit" set forth in the Declaration, which generally only includes the interior airspace between the perimeter walls and excludes all interior structural components and other common elements or shared facilities. The method of measurement used herein is generally found in sales materials and is provided to allow a prospective buyer to compare the Units with units in other condominium projects that utilize the same method. For the dimensions of the Unit determined as set forth in the Declaration refer to the prospectus documents. Measurements of rooms set forth on this floor plan are generally taken at the farthest points of each given room (as described above and as if the room were a perfect rectangle), without regard for any cutouts, soffits or other variations. Accordingly, the interior air space dimensions of the actual room will be smaller than the product obtained by multiplying the stated length and width. Terraces and other exterior areas are not part of the Unit.



12 LINE

INTERIOR:	1021 SF	95 M ²
BALCONY:	61 SF	6 M ²
TOTAL:	1082 SF	101 M²



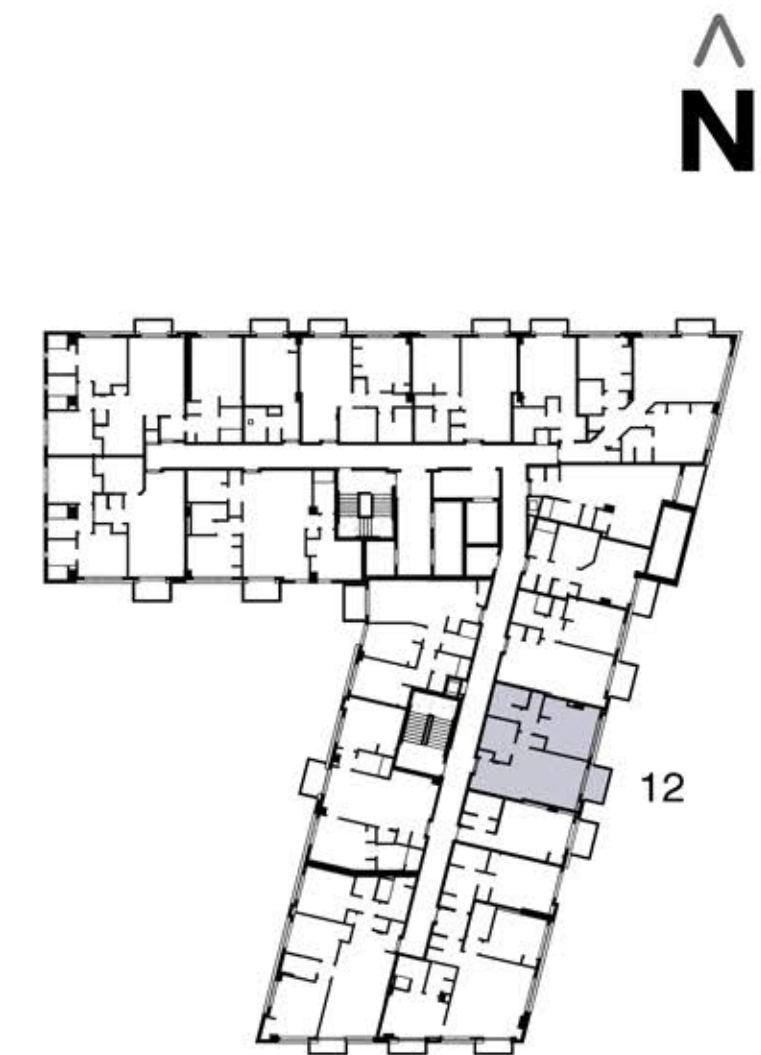
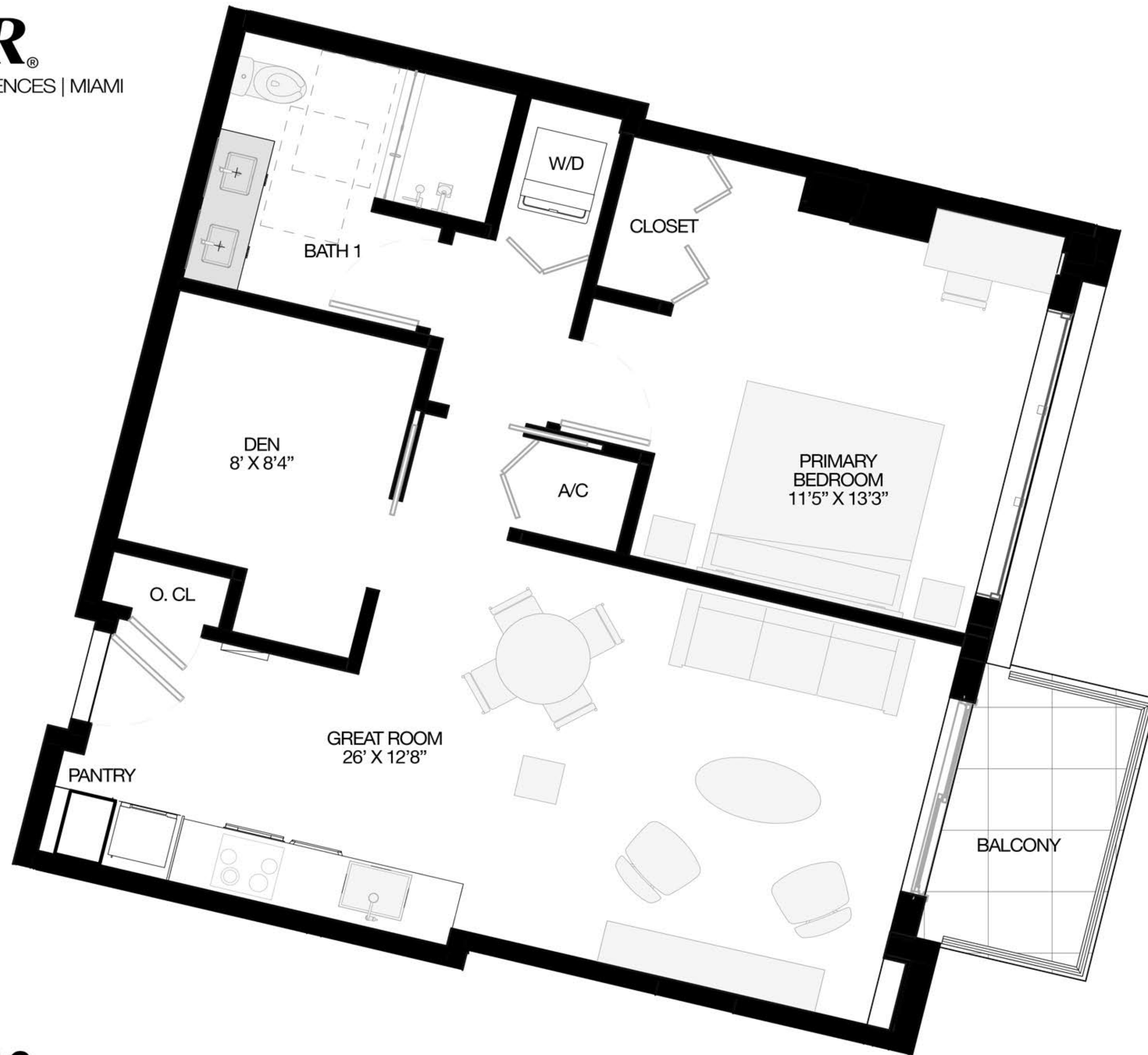
MODEL B5
2 BEDROOMS + DEN / 2 BATHS
FLOORS 10-12



All square footages and dimensions, including (without limitation) ceiling heights, are estimates based on preliminary plans and will vary with actual construction. All floor plans, specifications and other development plans are proposed and conceptual only and are subject to change and will not necessarily accurately reflect the final plans and specifications. Stated square footages and dimensions are measured to the exterior boundaries of the exterior walls and the centerline of interior demising walls between units and in fact vary from the square footages and dimensions that would be determined by using the description and definition of the "Unit" set forth in the Declaration, which generally only includes the interior airspace between the perimeter walls and excludes all interior structural components and other common elements or shared facilities. The method of measurement used herein is generally found in sales materials and is provided to allow a prospective buyer to compare the Units with units in other condominium projects that utilize the same method. For the dimensions of the Unit determined as set forth in the Declaration refer to the prospectus documents. Measurements of rooms set forth on this floor plan are generally taken at the farthest points of each given room (as described above and as if the room were a perfect rectangle), without regard for any cutouts, soffits or other variations. Accordingly, the interior air space dimensions of the actual room will be smaller than the product obtained by multiplying the stated length and width. Terraces and other exterior areas are not part of the Unit.

12 LINE

INTERIOR:	774 SF	72 M ²
BALCONY:	52 SF	5 M ²
TOTAL:	823 SF	77 M²



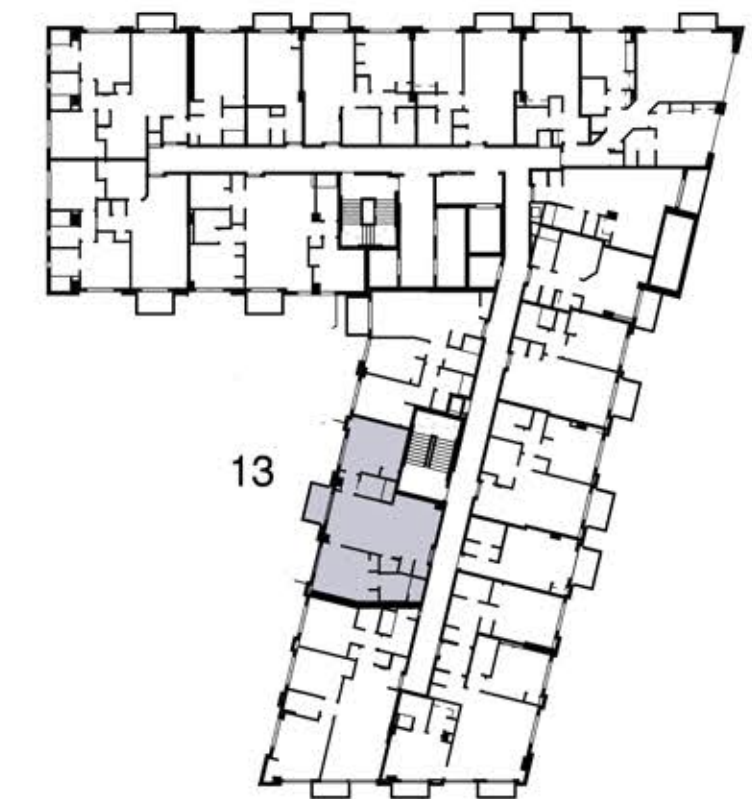
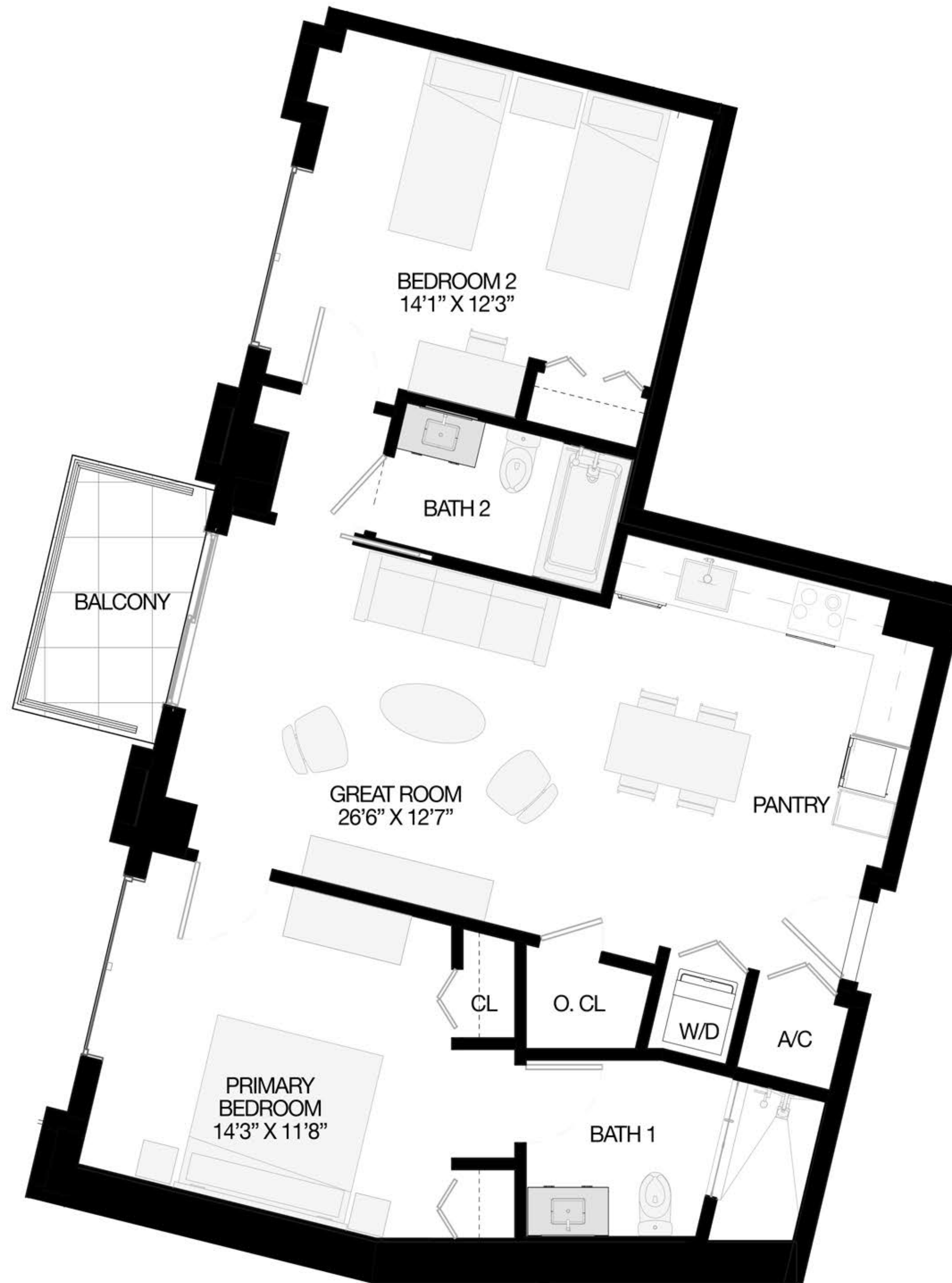
MODEL A6
1 BEDROOM + DEN / 1 BATH
FLOORS 3-8

All square footages and dimensions, including (without limitation) ceiling heights, are estimates based on preliminary plans and will vary with actual construction. All floor plans, specifications and other development plans are proposed and conceptual only and are subject to change and will not necessarily accurately reflect the final plans and specifications. Stated square footages and dimensions are measured to the exterior boundaries of the exterior walls and the centerline of interior demising walls between units and in fact vary from the square footages and dimensions that would be determined by using the description and definition of the "Unit" set forth in the Declaration, which generally only includes the interior airspace between the perimeter walls and excludes all interior structural components and other common elements or shared facilities. The method of measurement used herein is generally found in sales materials and is provided to allow a prospective buyer to compare the Units with units in other condominium projects that utilize the same method. For the dimensions of the Unit determined as set forth in the Declaration refer to the prospectus documents. Measurements of rooms set forth on this floor plan are generally taken at the farthest points of each given room (as described above and as if the room were a perfect rectangle), without regard for any cutouts, soffits or other variations. Accordingly, the interior air space dimensions of the actual room will be smaller than the product obtained by multiplying the stated length and width. Terraces and other exterior areas are not part of the Unit.



13 LINE

INTERIOR:	1,018	SF	94	M ²
BALCONY:	52	SF	5	M ²
TOTAL:	1,070	SF	99	M²

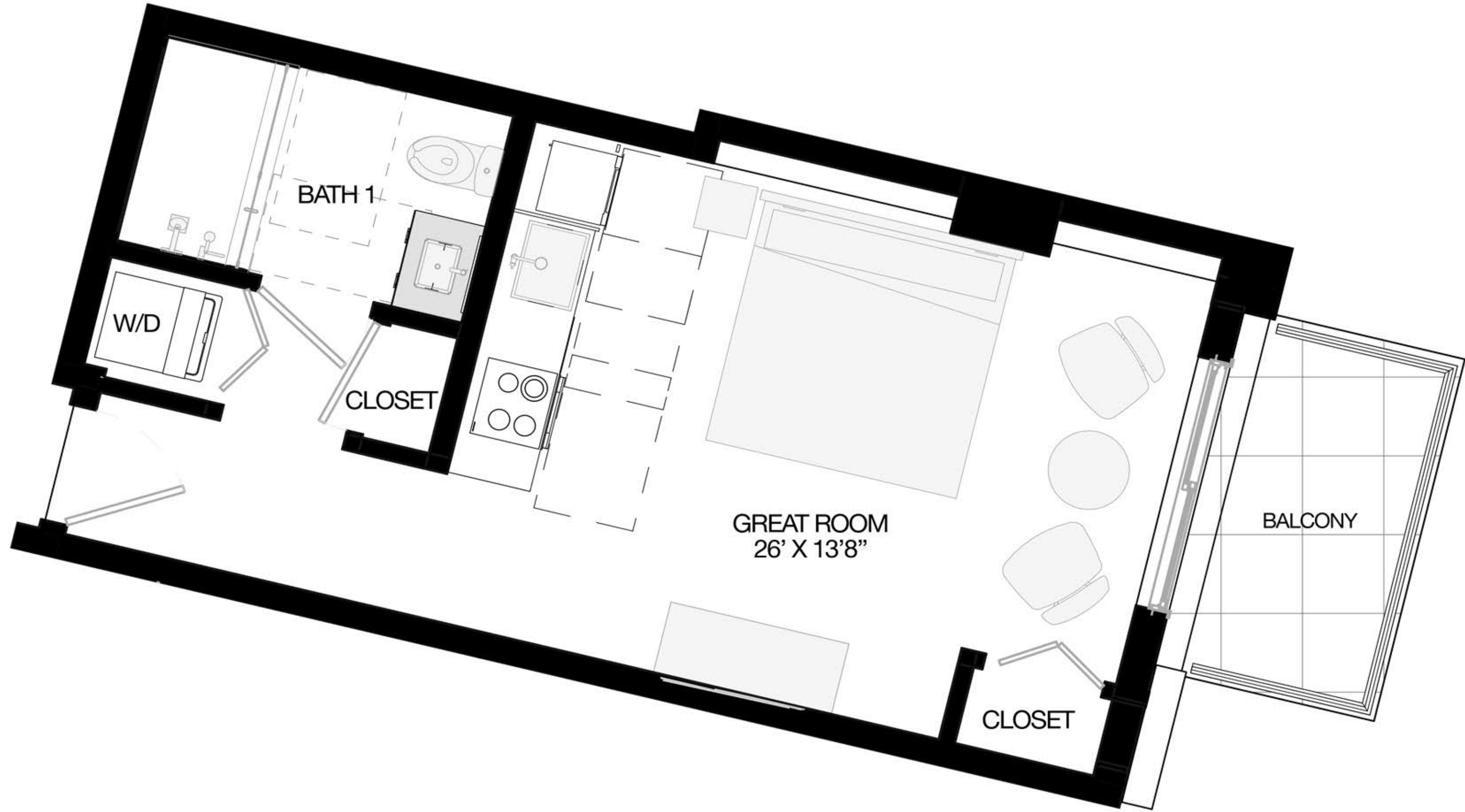


MODEL B2
2 BEDROOMS / 2 BATHS
FLOORS 3-8



14 LINE

INTERIOR:	388 SF	36 M ²
BALCONY:	53 SF	5 M ²
TOTAL:	441 SF	41 M²



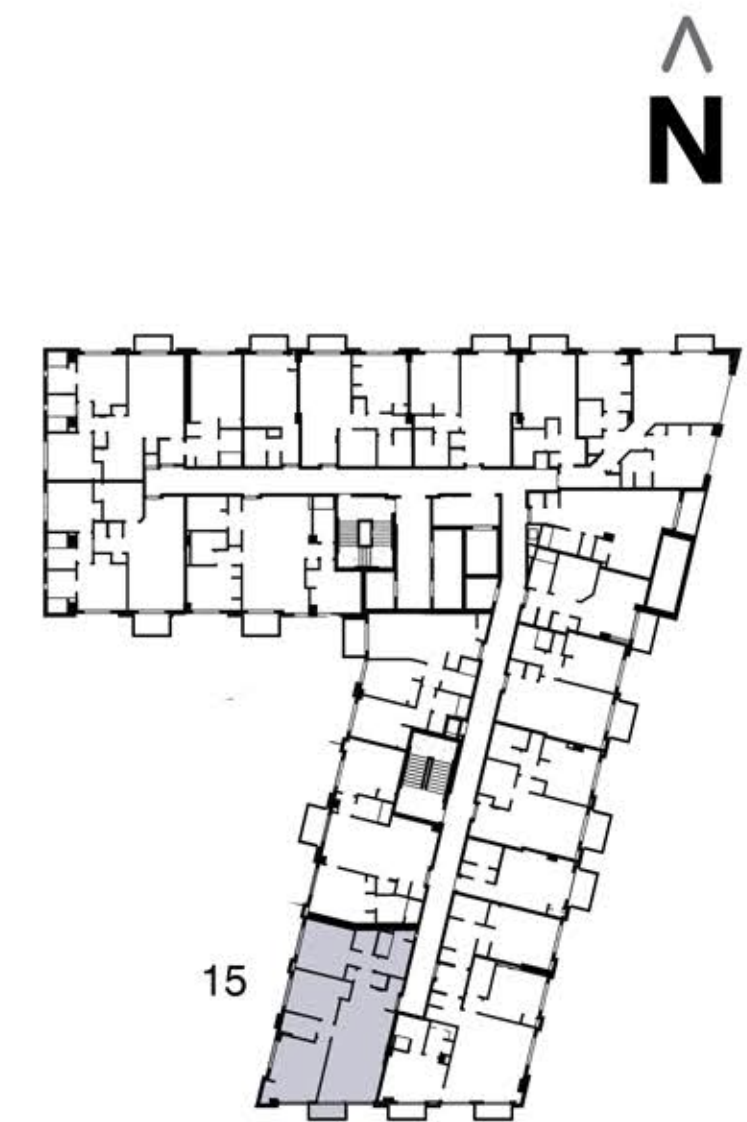
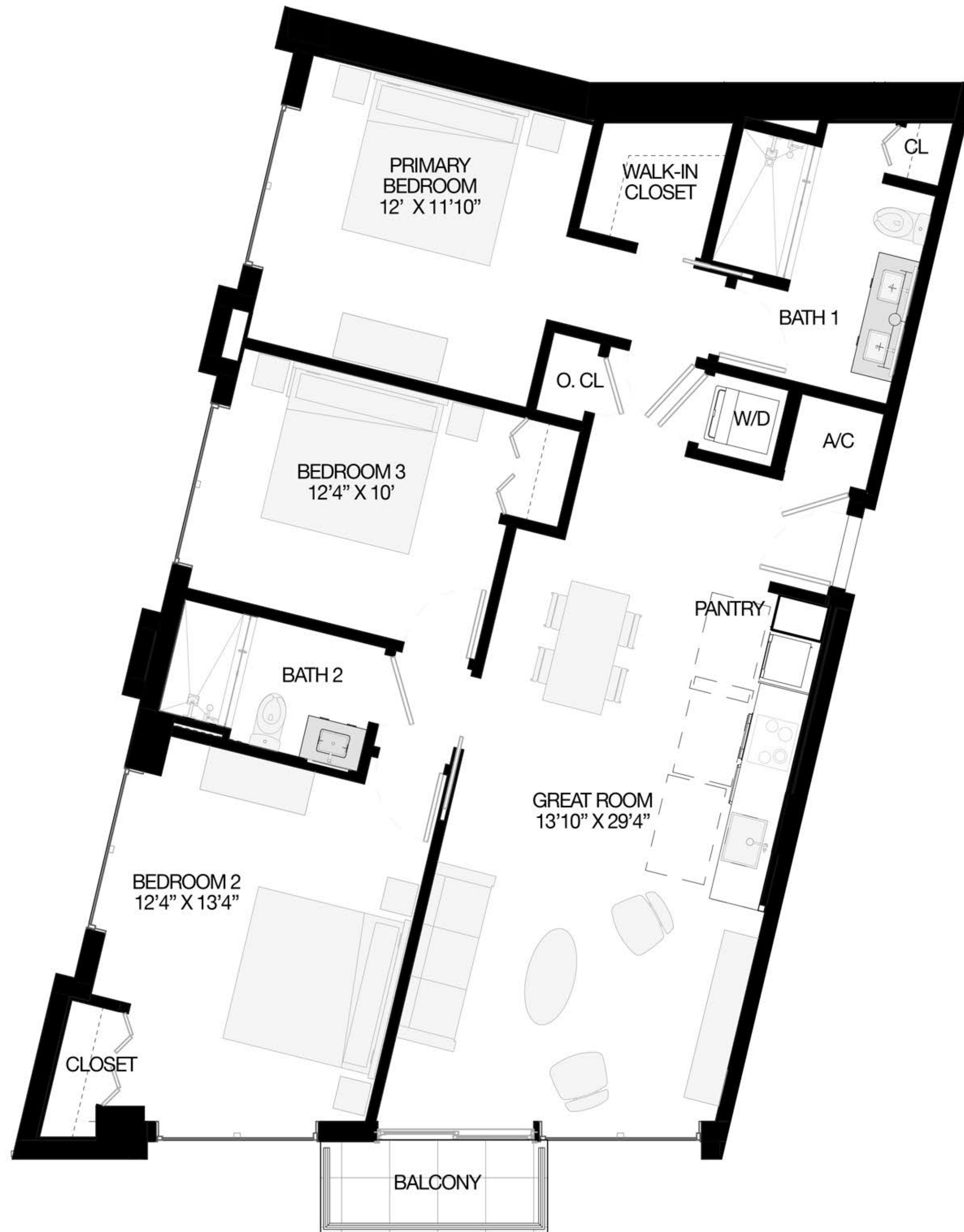
MODEL S4
STUDIO / 1 BATH
FLOORS 3-8



All square footages and dimensions, including (without limitation) ceiling heights, are estimates based on preliminary plans and will vary with actual construction. All floor plans, specifications and other development plans are proposed and conceptual only and are subject to change and will not necessarily accurately reflect the final plans and specifications. Stated square footages and dimensions are measured to the exterior boundaries of the exterior walls and the centerline of interior demising walls between units and in fact vary from the square footages and dimensions that would be determined by using the description and definition of the "Unit" set forth in the Declaration, which generally only includes the interior airspace between the perimeter walls and excludes all interior structural components and other common elements or shared facilities. The method of measurement used herein is generally found in sales materials and is provided to allow a prospective buyer to compare the Units with units in other condominium projects that utilize the same method. For the dimensions of the Unit determined as set forth in the Declaration refer to the prospectus documents. Measurements of rooms set forth on this floor plan are generally taken at the farthest points of each given room (as described above and as if the room were a perfect rectangle), without regard for any cutouts, soffits or other variations. Accordingly, the interior air space dimensions of the actual room will be smaller than the product obtained by multiplying the stated length and width. Terraces and other exterior areas are not part of the Unit.

15 LINE

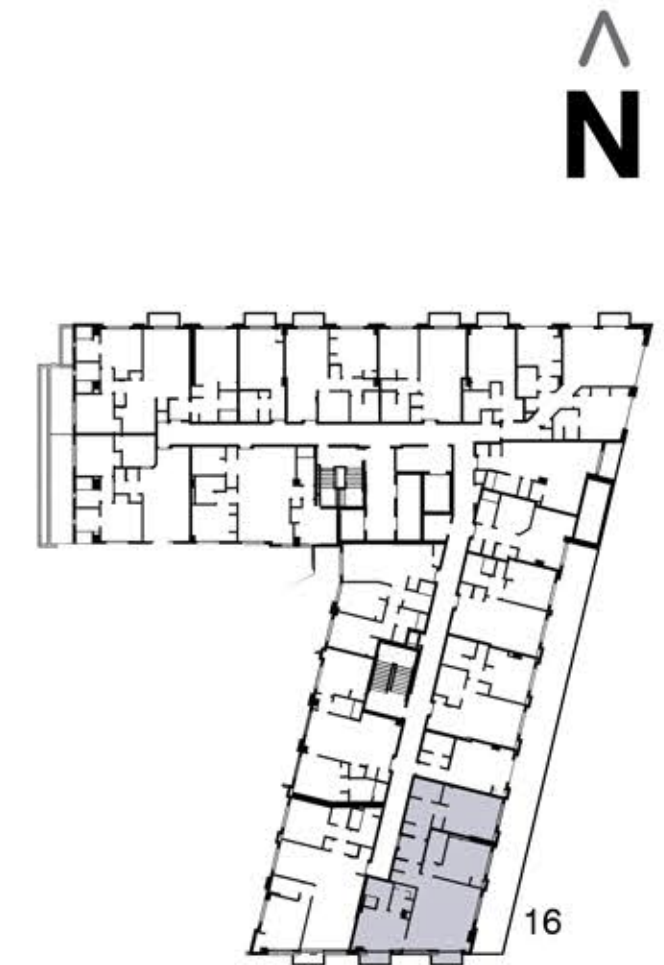
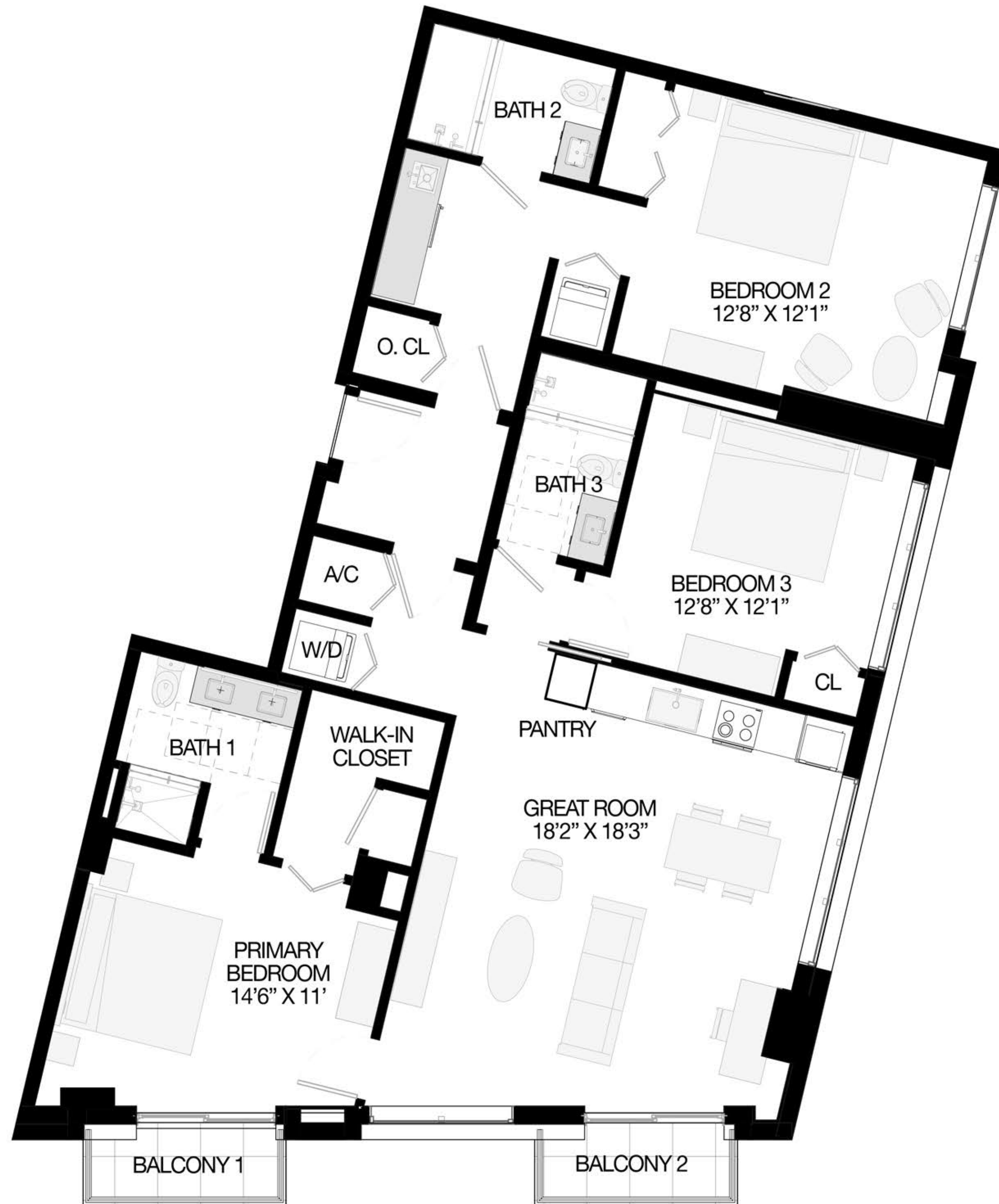
INTERIOR:	1,240 SF	115 M ²
BALCONY:	36 SF	3 M ²
TOTAL:	1,276 SF	119 M²



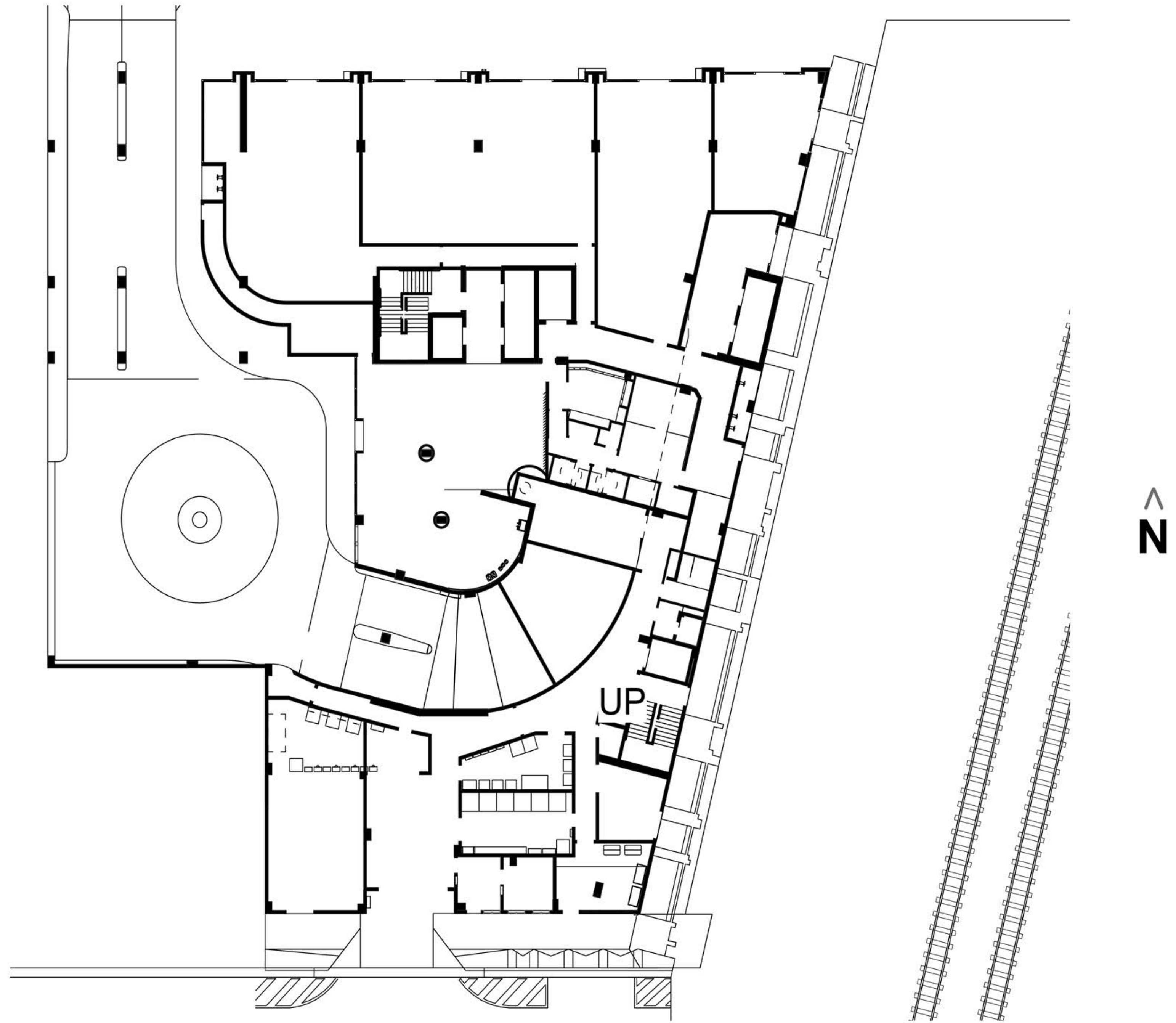
MODEL C2
3 BEDROOMS / 2 BATHS
FLOORS 3-8

16 LINE

INTERIOR:	1,513 SF	141 M ²
BALCONY:	70 SF	7 M ²
TOTAL:	1,582 SF	147 M²

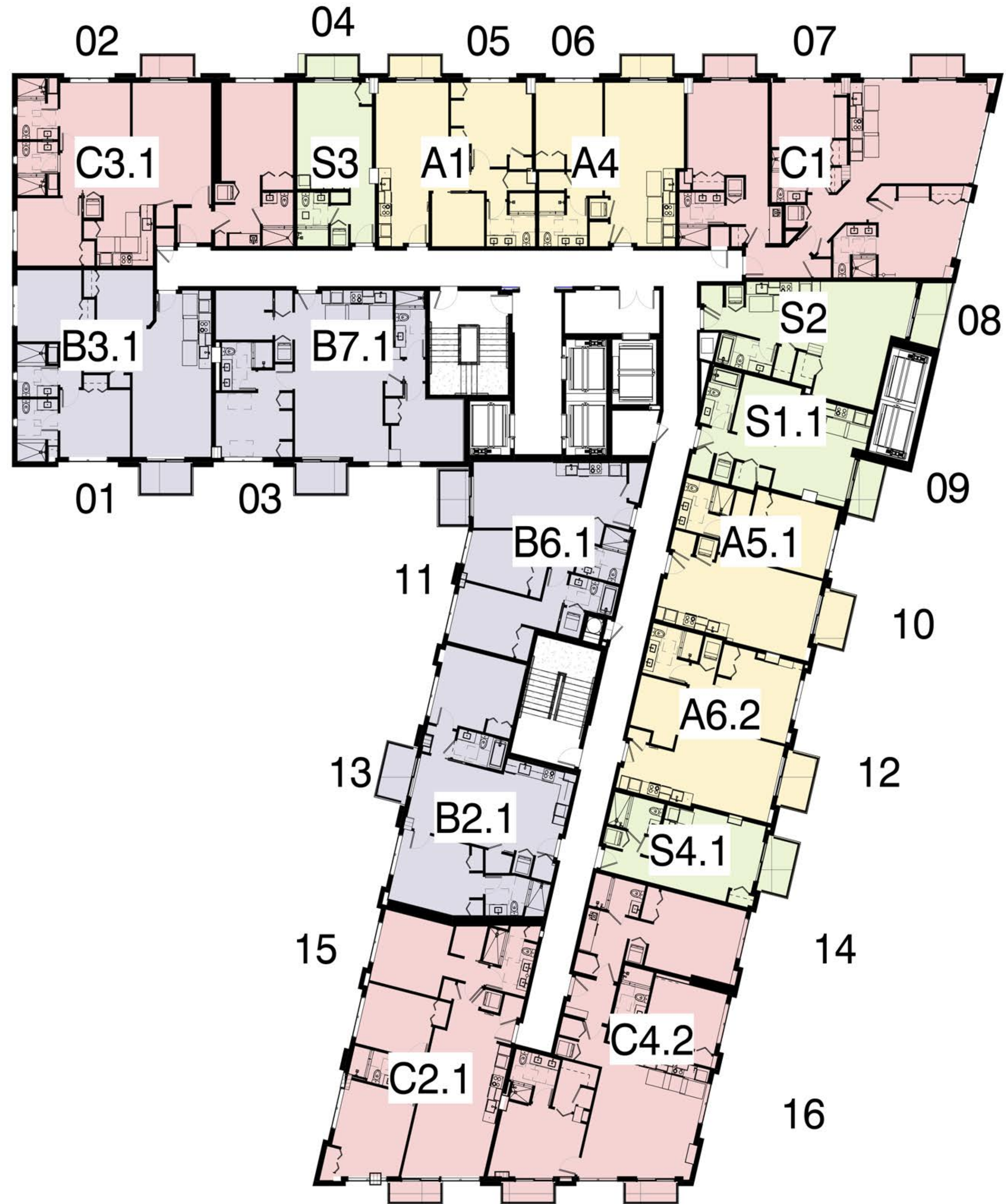


MODEL C4
3 BEDROOMS / 3 BATHS
FLOORS 3-8



LOBBY LEVEL





- RESIDENCES
- STUDIO**
- STUDIO
 - 1 BEDROOM
 - 2 BEDROOMS
 - 3 BEDROOMS

SIXTH FLOOR UNIT MATRIX

