

# RIVAGE

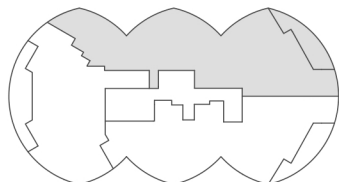
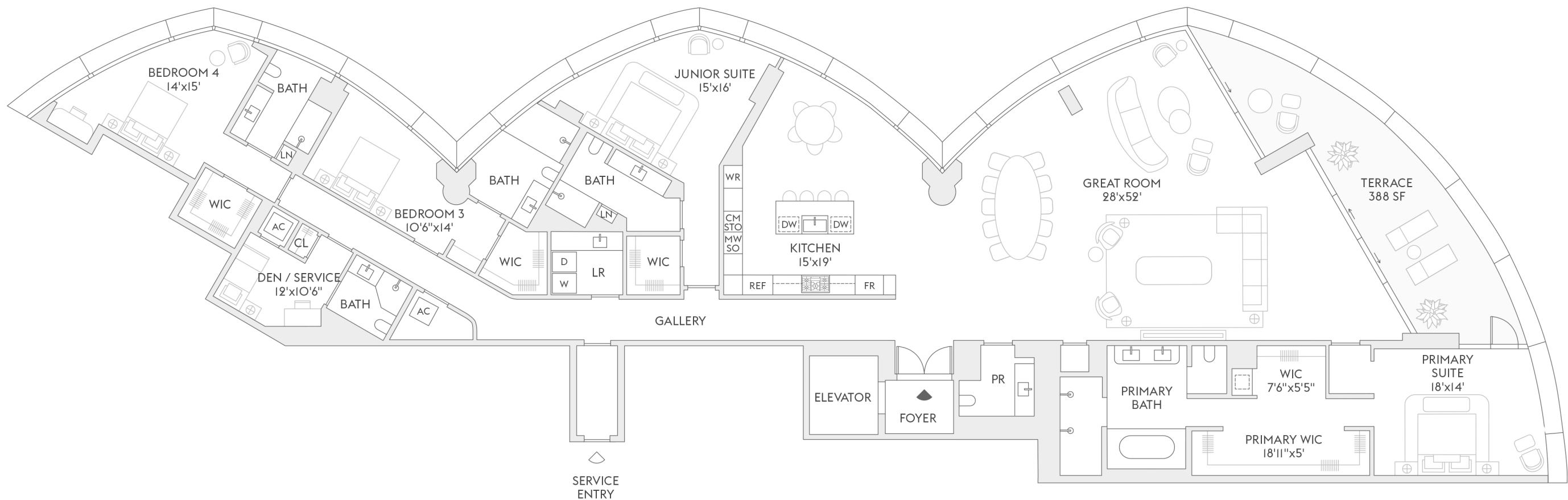
BAL HARBOUR

RESIDENCE FLOOR  
**A 2**

4 BEDROOMS  
5 BATHROOMS  
POWDER ROOM  
DEN / SERVICE

INTERIOR  
4,784 SF | 444 SQM  
  
EXTERIOR  
388 SF | 36 SQM

TOTAL  
5,172 SF | 480 SQM



The dimensions stated for this floor plan are approximate because there are various recognized methods for calculating the square footage of a unit. The square footage stated here is calculated from the exterior boundaries of the exterior walls to the centerline of interior demising walls without deductions for cutouts, curves, or architectural features. This method typically results in quoted dimensions greater than the dimensions that would be determined by using other accepted methods. The definition of "Unit" and the calculation method to be relied upon is set forth by the Developer in Developer's prospectus which method may result in a square footage calculation less than the result of the calculation method used here. Renderings depict features not included with purchase, but which are available at an additional cost such as wine bar and closet millwork among others. Consult the Developer's prospectus to learn what is included with Unit purchase and to understand Unit dimensions. 2023 © Carlton Terrace Owner LLC, with all rights reserved.

# RIVAGE

BAL HARBOUR

RESIDENCE FLOOR

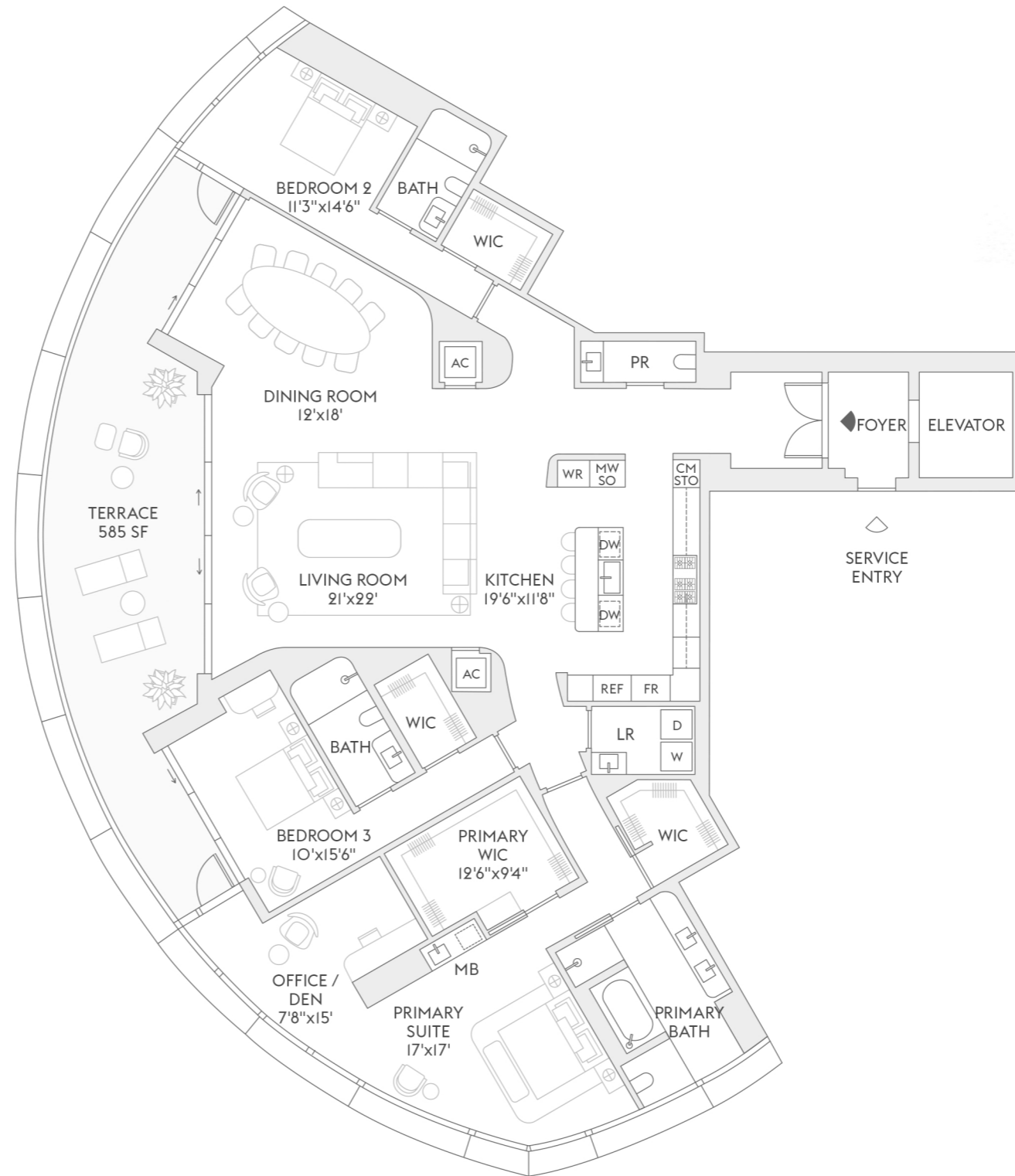
C 2

3 BEDROOMS  
3 BATHROOMS  
POWDER ROOM

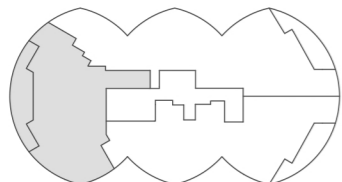
INTERIOR  
3,284 SF | 305 SQM

EXTERIOR  
585 SF | 54 SQM

TOTAL  
3,869 SF | 359 SQM



INTRACOASTAL  
WATERS



ATLANTIC OCEAN

The dimensions stated for this floor plan are approximate because there are various recognized methods for calculating the square footage of a unit. The square footage stated here is calculated from the exterior boundaries of the exterior walls to the centerline of interior demising walls without deductions for cutouts, curves, or architectural features. This method typically results in quoted dimensions greater than the dimensions that would be determined by using other accepted methods. The definition of "Unit" and the calculation method to be relied upon is set forth by the Developer in Developer's prospectus which method may result in a square footage calculation less than the result of the calculation method used here. Renderings depict features not included with purchase, but which are available at an additional cost such as wine bar and closet millwork among others. Consult the Developer's prospectus to learn what is included with Unit purchase and to understand Unit dimensions. 2023 © Carlton Terrace Owner LLC, with all rights reserved.

# RIVAGE

BAL HARBOUR

RESIDENCE  
**B**

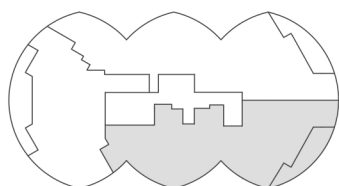
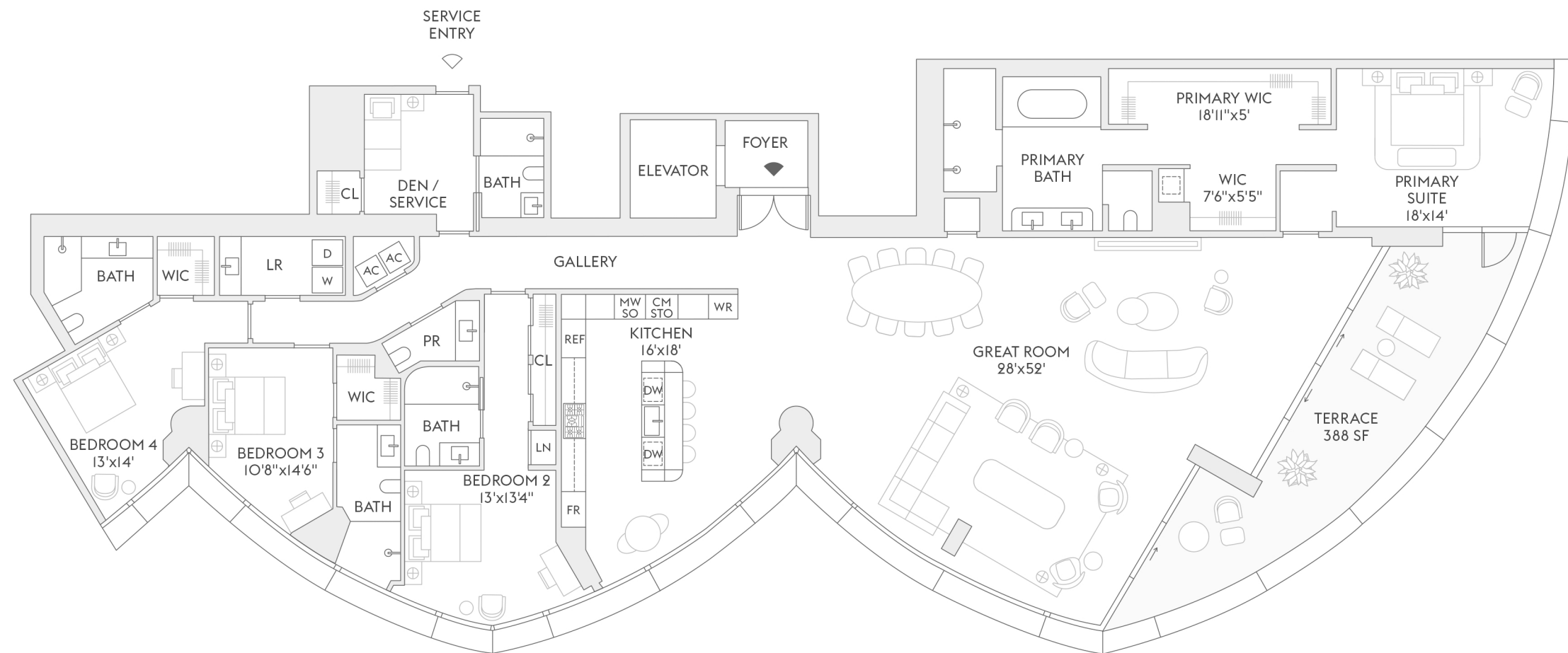
FLOOR  
**2**

4 BEDROOMS  
5 BATHROOMS  
POWDER ROOM  
DEN / SERVICE

INTERIOR  
4,215 SF | 392 SQM

EXTERIOR  
388 SF | 36 SQM

TOTAL  
4,603 SF | 428 SQM



The dimensions stated for this floor plan are approximate because there are various recognized methods for calculating the square footage of a unit. The square footage stated here is calculated from the exterior boundaries of the exterior walls to the centerline of interior demising walls without deductions for cutouts, curves, or architectural features. This method typically results in quoted dimensions greater than the dimensions that would be determined by using other accepted methods. The definition of "Unit" and the calculation method to be relied upon is set forth by the Developer in Developer's prospectus which method may result in a square footage calculation less than the result of the calculation method used here. Renderings depict features not included with purchase, but which are available at an additional cost such as wine bar and closet millwork among others. Consult the Developer's prospectus to learn what is included with Unit purchase and to understand Unit dimensions. 2023 © Carlton Terrace Owner LLC, with all rights reserved.

# RIVAGE

BAL HARBOUR

RESIDENCE  
**A**

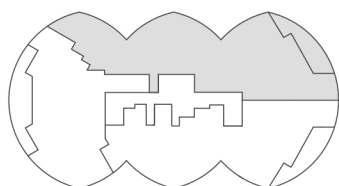
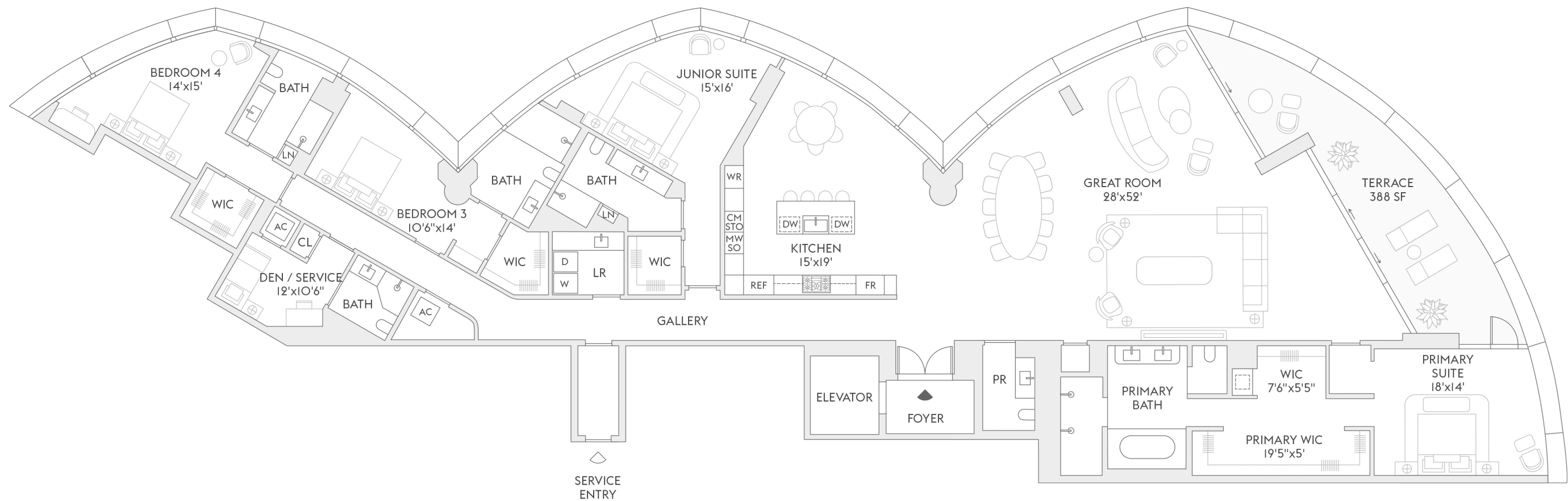
FLOORS  
**3-17**

4 BEDROOMS  
5 BATHROOMS  
POWDER ROOM  
DEN / SERVICE

INTERIOR  
4,810 SF | 447 SQM

EXTERIOR  
388 SF | 36 SQM

TOTAL  
5,198 SF | 483 SQM



The dimensions stated for this floor plan are approximate because there are various recognized methods for calculating the square footage of a unit. The square footage stated here is calculated from the exterior boundaries of the exterior walls to the centerline of interior demising walls without deductions for cutouts, curves, or architectural features. This method typically results in quoted dimensions greater than the dimensions that would be determined by using other accepted methods. The definition of "Unit" and the calculation method to be relied upon is set forth by the Developer in Developer's prospectus which method may result in a square footage calculation less than the result of the calculation method used here. Renderings depict features not included with purchase, but which are available at an additional cost such as wine bar and closet millwork among others. Consult the Developer's prospectus to learn what is included with Unit purchase and to understand Unit dimensions. 2023 © Carlton Terrace Owner LLC, with all rights reserved.

# RIVAGE

BAL HARBOUR

RESIDENCE

B

FLOORS

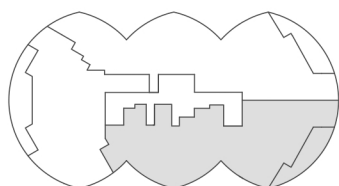
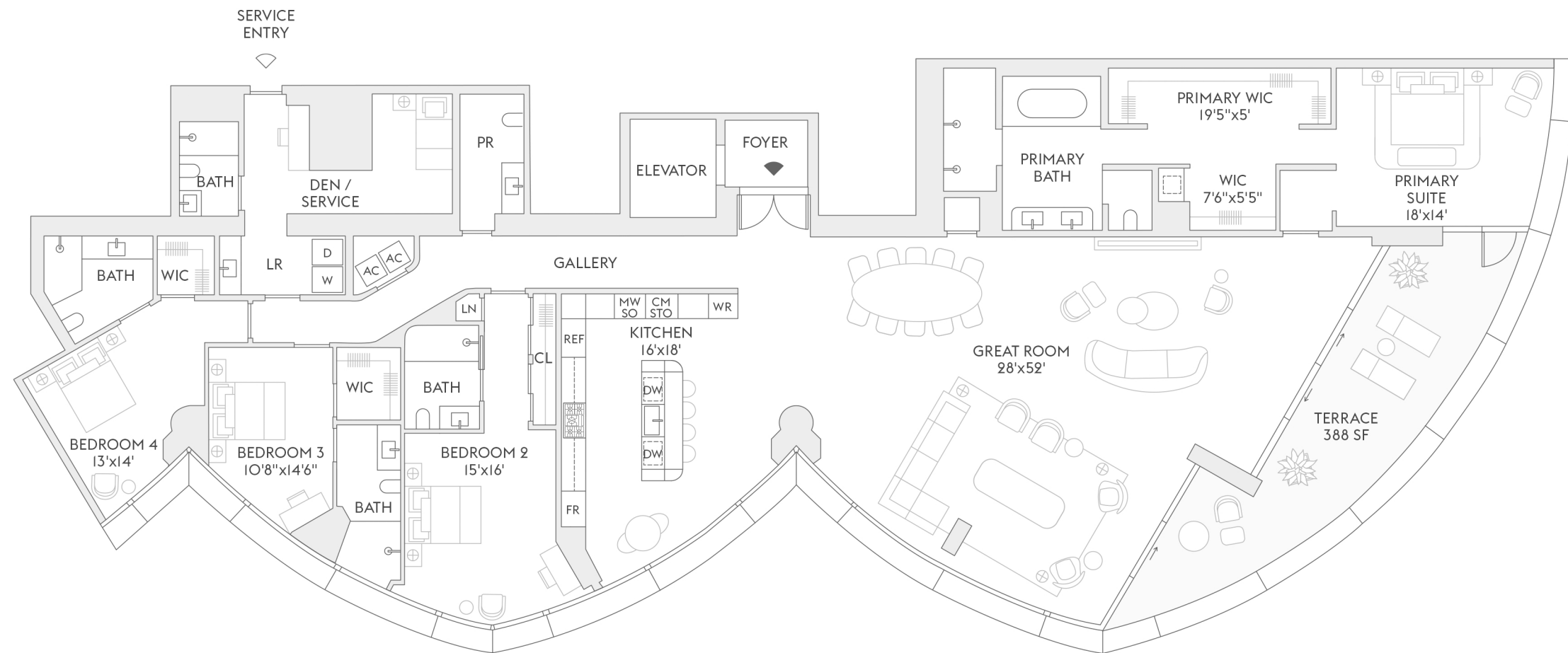
3-17

4 BEDROOMS  
5 BATHROOMS  
POWDER ROOM  
DEN / SERVICE

INTERIOR  
4,358 SF | 405 SQM

EXTERIOR  
388 SF | 36 SQM

TOTAL  
4,746 SF | 441 SQM



The dimensions stated for this floor plan are approximate because there are various recognized methods for calculating the square footage of a unit. The square footage stated here is calculated from the exterior boundaries of the exterior walls to the centerline of interior demising walls without deductions for cutouts, curves, or architectural features. This method typically results in quoted dimensions greater than the dimensions that would be determined by using other accepted methods. The definition of "Unit" and the calculation method to be relied upon is set forth by the Developer in Developer's prospectus which method may result in a square footage calculation less than the result of the calculation method used here. Renderings depict features not included with purchase, but which are available at an additional cost such as wine bar and closet millwork among others. Consult the Developer's prospectus to learn what is included with Unit purchase and to understand Unit dimensions. 2023 © Carlton Terrace Owner LLC, with all rights reserved.

# RIVAGE

BAL HARBOUR

RESIDENCE FLOORS

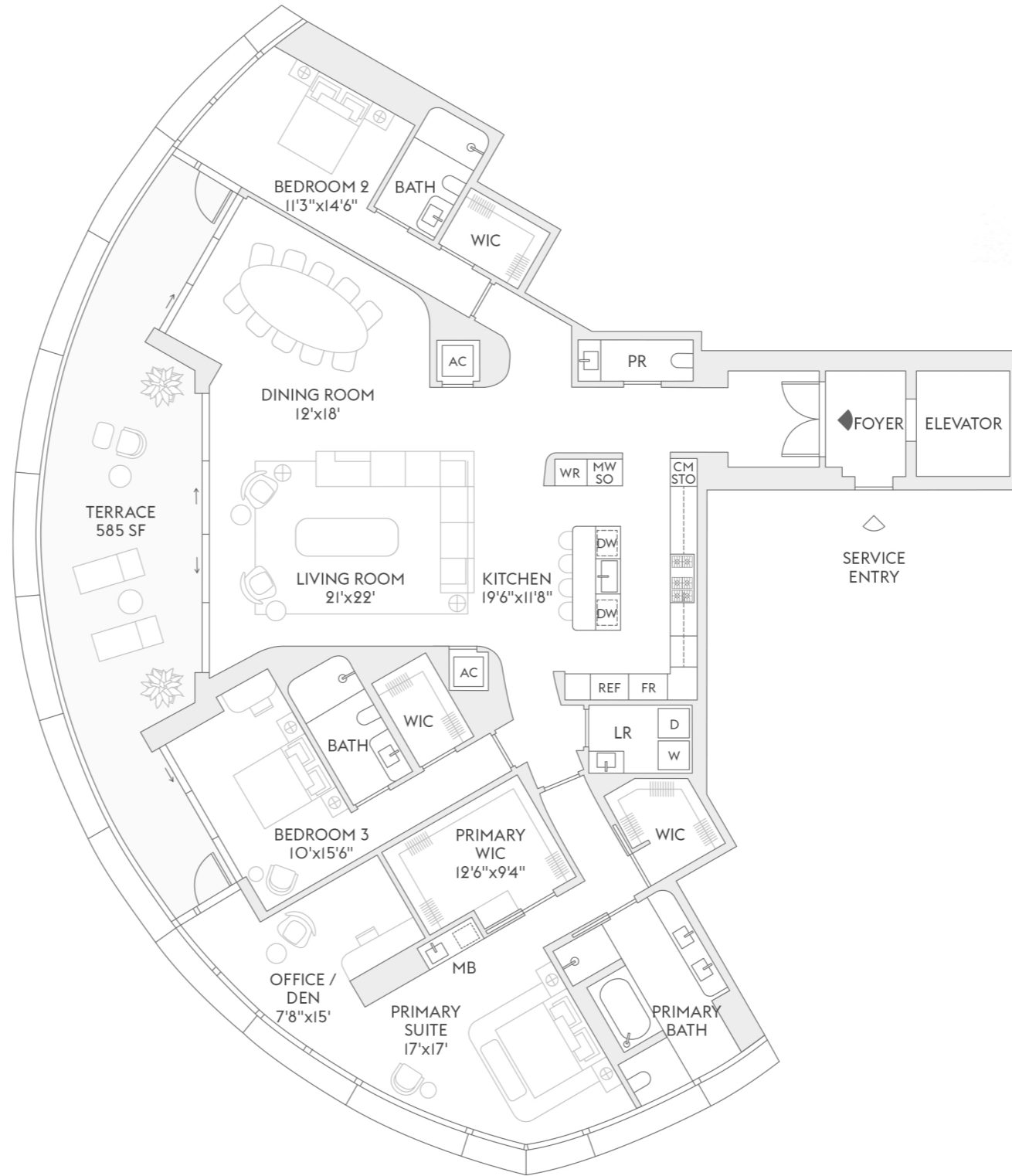
# C 3-17

3 BEDROOMS  
3 BATHROOMS  
POWDER ROOM

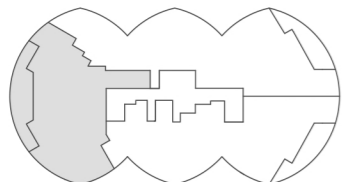
INTERIOR  
3,297 SF | 306 SQM

EXTERIOR  
585 SF | 54 SQM

TOTAL  
3,882 SF | 361 SQM



INTRACOASTAL  
WATERS



ATLANTIC OCEAN

The dimensions stated for this floor plan are approximate because there are various recognized methods for calculating the square footage of a unit. The square footage stated here is calculated from the exterior boundaries of the exterior walls to the centerline of interior demising walls without deductions for cutouts, curves, or architectural features. This method typically results in quoted dimensions greater than the dimensions that would be determined by using other accepted methods. The definition of "Unit" and the calculation method to be relied upon is set forth by the Developer in Developer's prospectus which method may result in a square footage calculation less than the result of the calculation method used here. Renderings depict features not included with purchase, but which are available at an additional cost such as wine bar and closet millwork among others. Consult the Developer's prospectus to learn what is included with Unit purchase and to understand Unit dimensions. 2023 © Carlton Terrace Owner LLC, with all rights reserved.

# RIVAGE

BAL HARBOUR

RESIDENCE  
**A**

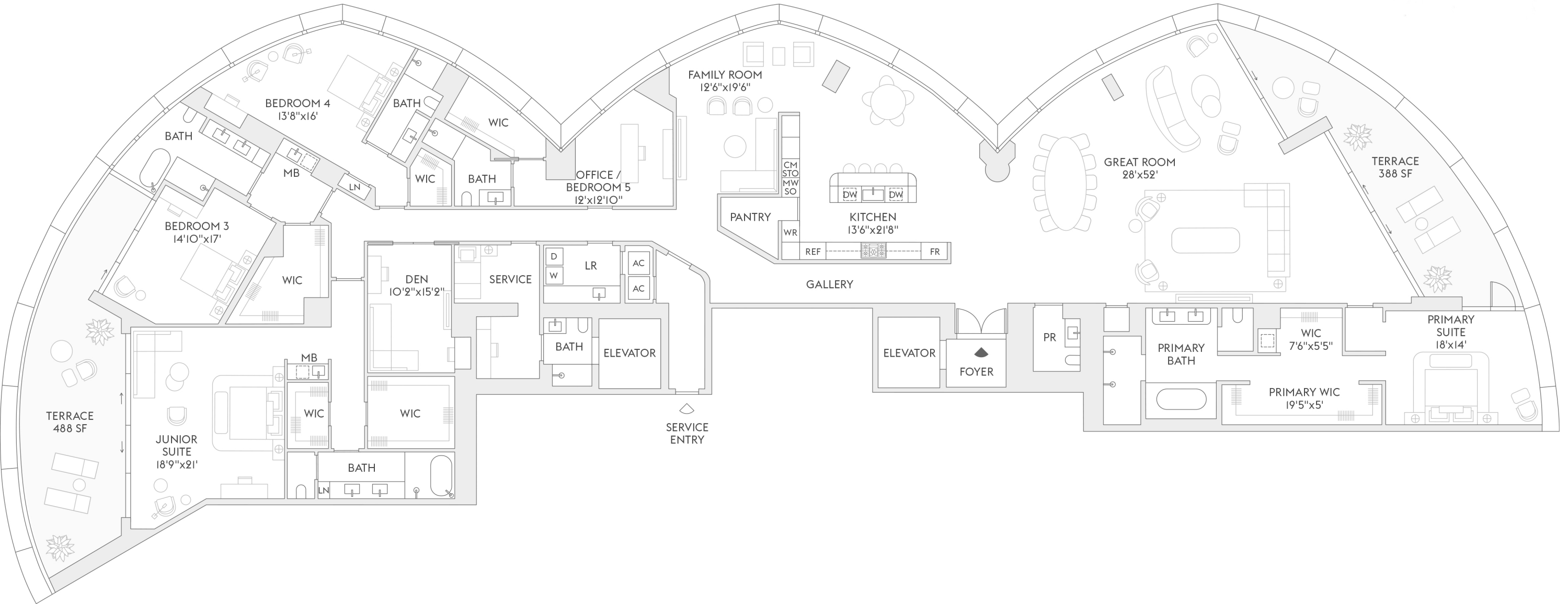
FLOORS  
**18-21**

4 BEDROOMS  
6 BATHROOMS  
POWDER ROOM  
OFFICE / BEDROOM  
FAMILY ROOM  
DEN  
SERVICE

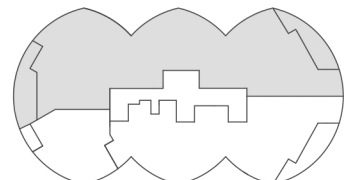
INTERIOR  
6,655 SF | 618 SQM

EXTERIOR  
876 SF | 81 SQM

TOTAL  
7,531 SF | 700 SQM



INTRACOASTAL  
WATERS



ATLANTIC OCEAN

The dimensions stated for this floor plan are approximate because there are various recognized methods for calculating the square footage of a unit. The square footage stated here is calculated from the exterior boundaries of the exterior walls to the centerline of interior demising walls without deductions for cutouts, curves, or architectural features. This method typically results in quoted dimensions greater than the dimensions that would be determined by using other accepted methods. The definition of "Unit" and the calculation method to be relied upon is set forth by the Developer in Developer's prospectus which method may result in a square footage calculation less than the result of the calculation method used here. Renderings depict features not included with purchase, but which are available at an additional cost such as wine bar and closet millwork among others. Consult the Developer's prospectus to learn what is included with Unit purchase and to understand Unit dimensions. 2023 © Carlton Terrace Owner LLC, with all rights reserved.

# RIVAGE

BAL HARBOUR

RESIDENCE  
**B**

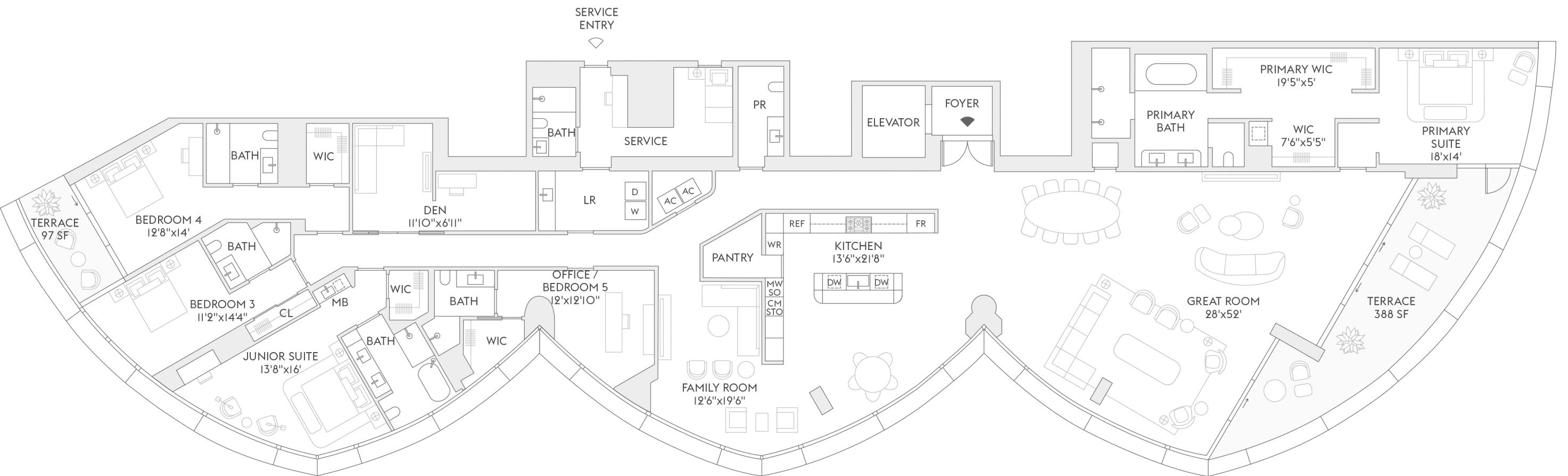
FLOORS  
**18-21**

4 BEDROOMS  
6 BATHROOMS  
POWDER ROOM  
OFFICE / BEDROOM  
FAMILY ROOM  
DEN  
SERVICE

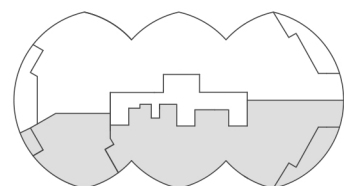
INTERIOR  
5,810 SF | 540 SQM

EXTERIOR  
485 SF | 45 SQM

TOTAL  
6,295 SF | 585 SQM



INTRACOASTAL  
WATERS



ATLANTIC OCEAN

The dimensions stated for this floor plan are approximate because there are various recognized methods for calculating the square footage of a unit. The square footage stated here is calculated from the exterior boundaries of the exterior walls to the centerline of interior demising walls without deductions for cutouts, curves, or architectural features. This method typically results in quoted dimensions greater than the dimensions that would be determined by using other accepted methods. The definition of "Unit" and the calculation method to be relied upon is set forth by the Developer in Developer's prospectus which method may result in a square footage calculation less than the result of the calculation method used here. Renderings depict features not included with purchase, but which are available at an additional cost such as wine bar and closet millwork among others. Consult the Developer's prospectus to learn what is included with Unit purchase and to understand Unit dimensions. 2023 © Carlton Terrace Owner LLC, with all rights reserved.