

INTERIOR  
5,058 SF  
EXTERIOR  
1,065 SF  
4 BEDROOMS  
5.5 BATHROOMS  
FAMILY ROOM  
WINDOWED SERVICE ROOM

INTERIOR  
3,872 SF  
EXTERIOR  
525 SF  
3 BEDROOMS  
4.5 BATHROOMS  
DEN  
SERVICE ROOM

INTERIOR  
3,872 SF  
EXTERIOR  
525 SF  
3 BEDROOMS  
4.5 BATHROOMS  
DEN  
SERVICE ROOM

INTERIOR  
4,428 SF  
EXTERIOR  
710 SF  
4 BEDROOMS  
5.5 BATHROOMS  
SERVICE ROOM

INTERIOR  
3,976 SF  
EXTERIOR  
580 SF  
3 BEDROOMS  
4.5 BATHROOMS  
SERVICE ROOM

INTERIOR  
4,980 SF  
EXTERIOR  
880 SF  
5 BEDROOMS  
6.5 BATHROOMS  
SERVICE ROOM



N 25° 45.8255



W 80° 8.4428

# RESIDENCE 01

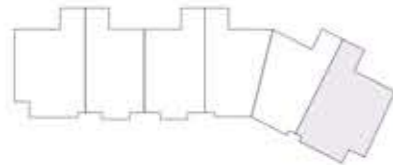
INTERIOR	EXTERIOR
4,980 F <sup>2</sup>	1,305 F <sup>2</sup>
463 M <sup>2</sup>	122 M <sup>2</sup>

TOTAL  
6,285 F<sup>2</sup>  
585 M<sup>2</sup>

\*

5 BEDROOMS  
6 BATHROOMS  
POWDER ROOM  
GREAT ROOM  
SERVICE SUITE

OCEAN VIEW



N



THE RESIDENCES

SIX FISHER ISLAND

⑥

6 Fisher Island Drive, Fisher Island, FL 33109  
305.873.3852 — 6-fisherisland.com

**Douglas Elliman**  
Development Marketing

The dimensions stated for this floor plan are approximate because there are various recognized methods for calculating the square footage of a unit. The square footage stated here is calculated from the exterior boundaries of the exterior walls to the centerline of interior demising walls without deductions for cutouts, curves, or architectural features. This method typically results in quoted dimensions greater than the dimensions that would be determined by using other accepted methods. The definition of "line" and the calculation method to be relied upon is set forth by the Developer in Developer's prospectus which method may result in a square footage calculation less than the result of the calculation method used here. Dimension and unit configuration is not guaranteed and may change during construction. Depictions of furnishings, fixtures and other items of personal property are not included with purchase. Consult the Developer's prospectus to understand unit dimensions, to learn what is included with purchase and by payment of regular condominium assessments, and to learn all terms and conditions. 2023 © FRIH Parcel 7 Owner, LLC, with all rights reserved.

PRIMARY BEDROOM  
20'-1" x 20'-1"  
BALCONY  
16'-6" x 48'-1"

HER WARDROBE  
14'-1" x 12'-11"

HER BATHROOM  
17'-2" x 13'-11"

GREAT ROOM  
32'-3" x 29'-6"

HIS WARDROBE  
8'-10" x 12'-11"

HIS BATHROOM  
12'-3" x 13'-11"

BALCONY  
39'-3" x 4'-8"

KITCHEN  
13'-5" x 22'-2"

BEDROOM 2  
17'-6" x 13'-1"

BEDROOM 3  
12'-6" x 14'-6"

BEDROOM 4  
12'-6" x 14'-6"

BEDROOM 5  
12'-7" x 13'-6"

BALCONY  
14' x 8'

BALCONY  
58'-2" x 11'-1"



N 25° 45.8255



W 80° 8.4428

# RESIDENCE 02

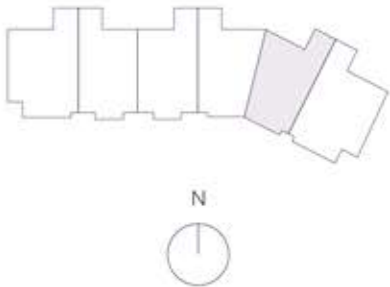
INTERIOR	EXTERIOR
3,976 F <sup>2</sup>	763 F <sup>2</sup>
370 M <sup>2</sup>	71 M <sup>2</sup>

TOTAL  
4,739 F<sup>2</sup>  
441 M<sup>2</sup>

\*

- 3 BEDROOMS
- 4 BATHROOMS
- POWDER ROOM
- FAMILY ROOM
- SERVICE SUITE
- LIVING ROOM

OCEAN VIEW



## THE RESIDENCES

SIX FISHER ISLAND

⑥

6 Fisher Island Drive, Fisher Island, FL 33109  
305.873.3852 — 6-fisherisland.com

**Douglas Elliman**  
Development Marketing

The dimensions stated for this floor plan are approximate because there are various recognized methods for calculating the square footage of a unit. The square footage stated here is calculated from the exterior boundaries of the exterior walls to the centerline of interior partitioning walls without deductions for cutouts, curves, or architectural features. This method typically results in quoted dimensions greater than the dimensions that would be determined by using other accepted methods. The definition of "Unit" and the calculation method to be relied upon is set forth by the Developer in Developer's prospectus which method may result in a square footage calculation less than the result of the calculation method used here. Dimension and unit configuration is not guaranteed and may change during construction. Depictions of furnishings, fixtures and other items of personal property are not included with purchase. Consult the Developer's prospectus to understand Unit dimensions, to learn what is included with purchase and by payment of regular condominium assessments, and to learn all terms and conditions. 2023 © PHH Parcel 7 Owner, LLC, with all rights reserved.

- FAMILY ROOM  
18'-8" x 20'
- BALCONY  
16'-6" x 43'-3"
- PRIMARY BEDROOM  
14'-1" x 23'-6"
- KITCHEN  
21'-6" x 11'-6"
- LIVING ROOM  
30'-7" x 14'-6"
- HER WARDROBE  
9' x 13'-8"
- HIS WARDROBE  
9'-11" x 13'-4"
- PRIMARY BATHROOM  
15'-4" x 17'-3"
- BEDROOM 2  
13' x 14'-8"
- BEDROOM 3  
13'-6" x 14'-5"
- BALCONY  
33'-3" x 8'-1"



N 25° 45.8255



W 80° 8.4428

# RESIDENCE 02C

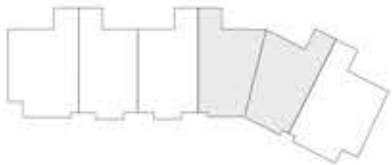
INTERIOR	EXTERIOR
8,404 F <sup>2</sup>	1,916 F <sup>2</sup>
782 M <sup>2</sup>	179 M <sup>2</sup>

TOTAL  
10,320 F<sup>2</sup>  
961 M<sup>2</sup>

\*

- 6 BEDROOMS
- 7 BATHROOMS
- POWDER ROOM
- FAMILY ROOM
- EXERCISE ROOM
- OFFICE
- WINE ROOM
- SERVICE SUITE
- GREAT ROOM

OCEAN VIEW



## THE RESIDENCES

SIX FISHER ISLAND

⑥

6 Fisher Island Drive, Fisher Island, FL 33109  
305.873.3852 — 6-fisherisland.com

**Douglas Elliman**  
Development Marketing

The dimensions stated for this floor plan are approximate because there are various recognized methods for calculating the square footage of a unit. The square footage stated here is calculated from the exterior boundaries of the exterior walls to the centerline of interior dividing walls without deductions for closets, curves, or architectural features. This method typically results in quoted dimensions greater than the dimensions that would be determined by using other accepted methods. The definition of "Unit" and the calculation method to be relied upon is set forth by the Developer in Developer's prospectus which method may result in a square footage calculation less than the result of the calculation method used here. Dimension and unit configuration is not guaranteed and may change during construction. Depictions of furnishings, fixtures and other items of personal property are not included with purchase. Consult the Developer's prospectus to understand Unit dimensions, to learn what is included with purchase and by payment of regular condominium assessments, and to learn all terms and conditions. ©2023 © 1994 Parcel 7 Overlay, LLC, with all rights reserved.

PRIMARY BEDROOM  
23'-11" x 20'-1"  
BALCONY  
15'-9" x 88'-10"

FAMILY ROOM  
25'-11" x 20'-1"  
HER BATHROOM  
17'-7" x 14'-11"

GREAT ROOM  
29'-5" x 64'-5"  
HER WARDROBE  
17'-5" x 14'-4"

HIS BATHROOM  
12'-3" x 14'-9"  
HIS WARDROBE  
14'-10" x 18'-6"

KITCHEN  
16'-2" x 22'  
WINE ROOM  
5'-3" x 15'-11"  
OFFICE  
15'-7" x 10'-3"

EXERCISE ROOM  
10'-11" x 28'-11"

BEDROOM 2  
13'-6" x 14'-5"

BEDROOM 3  
14'-6" x 14'-8"

BEDROOM 4  
13' x 14'-5"

BEDROOM 5  
12' x 13'-10"

BALCONY  
93'-3" x 13'-8"

BEDROOM 6  
17'-9" x 15'-8"



N 25° 45.8255



W 80° 8.4428

# RESIDENCE 03

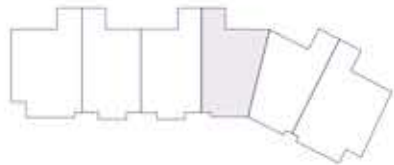
INTERIOR	EXTERIOR
4,428 F <sup>2</sup>	1,153 F <sup>2</sup>
412 M <sup>2</sup>	108 M <sup>2</sup>

TOTAL  
5,581 F<sup>2</sup>  
520 M<sup>2</sup>

\*

4 BEDROOMS  
5 BATHROOMS  
POWDER ROOM  
FAMILY ROOM  
SERVICE SUITE  
LIVING ROOM

OCEAN VIEW



N



THE RESIDENCES

SIX FISHER ISLAND

⑥

6 Fisher Island Drive, Fisher Island, FL 33109  
305.873.3852 — 6-fisherisland.com

**Douglas Elliman**  
Development Marketing

The dimensions stated for this floor plan are approximate because there are various recognized methods for calculating the square footage of a unit. The square footage stated here is calculated from the exterior boundaries of the interior walls to the centerline of exterior demising walls without deductions for outcrops, curves, or architectural features. This method typically results in quoted dimensions greater than the dimensions that would be determined by using other accepted methods. The definition of "unit" and the calculation method to be relied upon is set forth by the Developer in Developer's prospectus which method may result in a square footage calculation less than the result of the calculation method used here. Dimension and unit configuration is not guaranteed and may change during construction. Depictions of furnishings, fixtures and other items of personal property are not included with purchase. Consult the Developer's prospectus to understand Unit dimensions, to learn what is included with purchase and to learn of regular condominium assessments, and to learn all terms and conditions. 2023 © FPI Fiscal 7 Owner, LLC, with all rights reserved.

BALCONY  
15'-4" x 43'-3"

FAMILY ROOM  
16'-10" x 20'-1"

PRIMARY BEDROOM  
15'-2" x 22'-10"

KITCHEN  
21'-1" x 11'-6"

LIVING ROOM  
29'-5" x 15'-4"

HER WARDROBE  
14'-6" x 9'

HIS WARDROBE  
12'-5" x 9'-10"

PRIMARY BATHROOM  
15'-4" x 17'-3"

BEDROOM 2  
17'-9" x 15'-9"

BEDROOM 3  
13' x 14'-5"

BEDROOM 4  
12' x 13'-10"

BALCONY  
60' x 13'-8"



N 25° 45.8255



W 80° 8.4428

# RESIDENCE 04

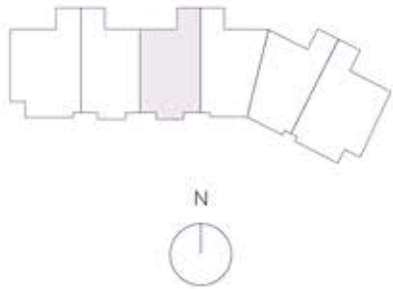
INTERIOR	EXTERIOR
3,872 F <sup>2</sup>	823 F <sup>2</sup>
360 M <sup>2</sup>	77 M <sup>2</sup>

TOTAL  
4,695 F<sup>2</sup>  
437 M<sup>2</sup>

\*

3 BEDROOMS  
4 BATHROOMS  
POWDER ROOM  
FAMILY ROOM  
SERVICE SUITE  
DEN  
LIVING ROOM

OCEAN VIEW



**THE RESIDENCES**

SIX FISHER ISLAND

⑥

6 Fisher Island Drive, Fisher Island, FL 33109  
305.873.3852 — 6-fisherisland.com

**Douglas Elliman**  
Development Marketing

The dimensions stated for this floor plan are approximate because there are various recognized methods for calculating the square footage of a unit. The square footage stated here is calculated from the exterior boundaries of the exterior walls to the centerline of interior demising walls without deductions for cutouts, curves, or architectural features. This method typically results in quoted dimensions greater than the dimensions that would be determined by using other accepted methods. The definition of "Unit" and the calculation method to be relied upon is set forth by the Developer in Developer's prospectus which method may result in a square footage calculation less than the result of the calculation method used here. Dimension and unit configuration is not guaranteed and may change during construction. Depictions of furnishings, fixtures and other items of personal property are not included with purchase. Consult the Developer's prospectus to understand Unit dimensions, to learn what is included with purchase and by payment of regular condominium assessments, and to learn all terms and conditions. 2023 © P&H Parcel 7 Owner, LLC, with all rights reserved.

- FAMILY ROOM  
16'-9" x 20'-1"
- BALCONY  
15' x 33'-7"
- PRIMARY BEDROOM  
14'-7" x 19'
- KITCHEN  
21'-1" x 12'-5"
- LIVING ROOM  
29'-5" x 15'-2"
- HER WARDROBE  
10'-5" x 8'-2"
- HIS WARDROBE  
10'-5" x 6'
- PRIMARY BATHROOM  
17'-3" x 12'-10"
- BEDROOM 2  
14'-8" x 12'-10"
- BEDROOM 3  
16'-9" x 13'
- DEN  
11'-7" x 11'-3"
- BALCONY  
38'-9" x 13'-8"



N 25° 45.8255

\*

W 80° 8.4428

# RESIDENCE 04C

INTERIOR 7,744 F<sup>2</sup>  
720 M<sup>2</sup>

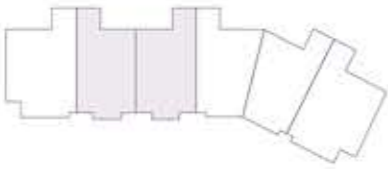
EXTERIOR 1,607 F<sup>2</sup>  
150 M<sup>2</sup>

TOTAL 9,351 F<sup>2</sup>  
870 M<sup>2</sup>

\*

- 5 BEDROOMS
- 6 BATHROOMS
- 2 POWDER ROOMS
- FAMILY ROOM
- SERVICE SUITE
- WINE ROOM
- EXERCISE ROOM
- DEN
- GREAT ROOM

OCEAN VIEW



## THE RESIDENCES

SIX FISHER ISLAND

⑥

- PRIMARY BEDROOM 23'-1" x 19'-4"
- BALCONY 15' x 67'-11"
- FAMILY ROOM 22'-8" x 19'
- GREAT ROOM 29'-7" x 50'-7"
- HER BATHROOM 18'-5" x 15'-1"
- KITCHEN 12'-10" x 17'-8"
- HER WARDROBE 17'-5" x 14'-4"
- HIS BATHROOM 12'-6" x 14'-9"
- WINE ROOM 6'-3" x 14'-5"
- HIS WARDROBE 14'-10" x 19'-2"
- EXERCISE ROOM 12'-3" x 26'-8"
- BEDROOM 2 16'-1" x 13'-8"
- BEDROOM 3 14'-8" x 12'-10"
- BEDROOM 4 14'-8" x 12'-10"
- BEDROOM 5 16'-9" x 13'
- DEN 11'-9" x 11'-3"
- BALCONY 76'-9" x 13'-2"



N 25° 45.8255 \* W 80° 8.4428

The dimensions stated for this floor plan are approximate because there are various recognized methods for calculating the square footage of a unit. The square footage stated here is calculated from the exterior boundaries of the exterior walls to the centerline of exterior demising walls without deductions for cutouts, curves, or architectural features. This method typically results in quoted dimensions greater than the dimensions that would be determined by using other accepted methods. The definition of "Unit" and the calculation method to be relied upon is set forth by the Developer in Developer's prospectus which method may result in a square footage calculation less than the result of the calculation method used here. Dimension and unit configuration is not guaranteed and may change during construction. Depictions of furnishings, fixtures and other items of personal property are not included with purchase. Consult the Developer's prospectus to understand Unit dimensions, to learn what is included with purchase and by payment of regular condominium assessments, and to learn all terms and conditions. 2023 © PMA Fiscal 7 Devco, LLC, with all rights reserved.

# RESIDENCE 05

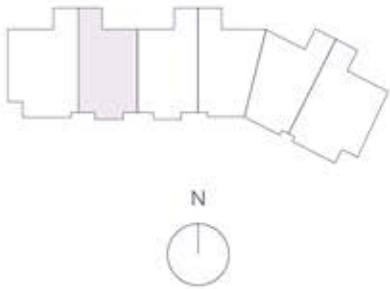
INTERIOR	EXTERIOR
3,872 F <sup>2</sup>	784 F <sup>2</sup>
360 M <sup>2</sup>	73 M <sup>2</sup>

TOTAL  
4,656 F<sup>2</sup>  
433 M<sup>2</sup>

\*

3 BEDROOMS  
4 BATHROOMS  
POWDER ROOM  
FAMILY ROOM  
SERVICE SUITE  
DEN  
LIVING ROOM

OCEAN VIEW



THE RESIDENCES

SIX FISHER ISLAND

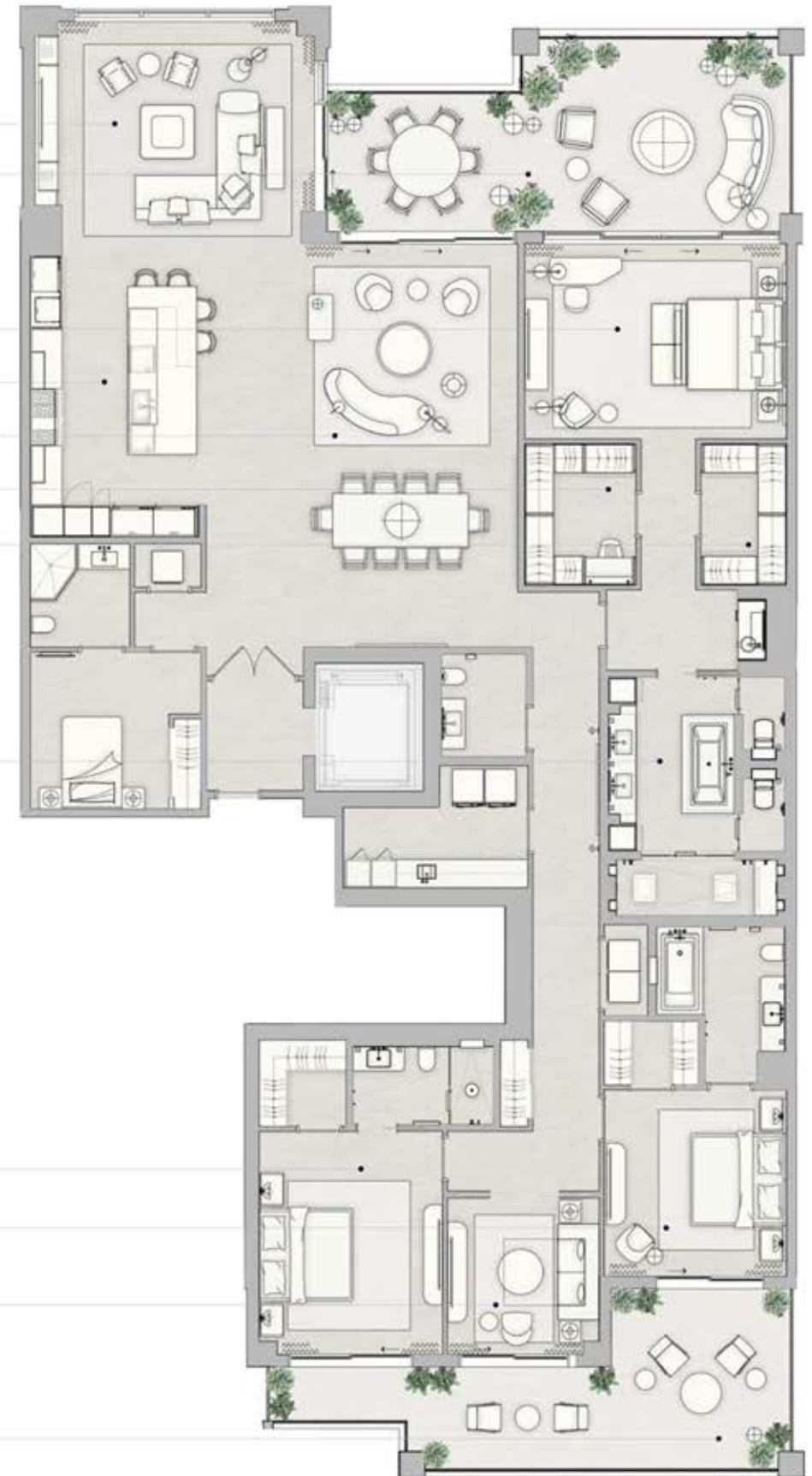
⑥

6 Fisher Island Drive, Fisher Island, FL 33109  
305.873.3852 — 6-fisherisland.com

**Douglas Elliman**  
Development Marketing

The dimensions stated for this floor plan are approximate because there are various recognized methods for calculating the square footage of a unit. The square footage stated here is calculated from the exterior boundaries of the exterior walls to the centerline of interior demising walls without deductions for alcoves, curves, or architectural features. This method typically results in quoted dimensions greater than the dimensions that would be determined by using other accepted methods. The definition of "Unit" and the calculation method to be relied upon is set forth by the Developer in Developer's prospectus which method may result in a square footage calculation less than the result of the calculation method used here. Dimension and unit configuration is not guaranteed and may change during construction. Depictions of furnishings, fixtures and other items of personal property are not included with purchase. Consult the Developer's prospectus to understand Unit dimensions, to learn what is included with purchase and by payment of regular condominium assessments, and to learn all terms and conditions. 2023 © PNH Parcel 7 Overlay, LLC, with all rights reserved.

- FAMILY ROOM  
16'-9" x 20'-1"
- BALCONY  
15' x 33'-7"
- PRIMARY BEDROOM  
14'-7" x 19"
- KITCHEN  
21'-1" x 12'-5"
- LIVING ROOM  
29'-5" x 15'-2"
- HER WARDROBE  
10'-5" x 8'-2"
- HIS WARDROBE  
10'-5" x 6'
- PRIMARY BATHROOM  
17'-3" x 12'-10"
- BEDROOM 2  
16'-9" x 13'
- BEDROOM 3  
14'-8" x 12'-10"
- DEN  
11'-7" x 11'-3"
- BALCONY  
38' x 13'-8"



N 25° 45.8255



W 80° 8.4428

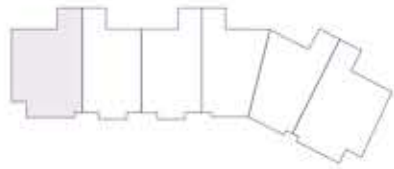
# RESIDENCE 06

INTERIOR	EXTERIOR
5,058 F <sup>2</sup>	1,943 F <sup>2</sup>
470 M <sup>2</sup>	181 M <sup>2</sup>

TOTAL  
7,001 F<sup>2</sup>  
651 M<sup>2</sup>

- 4 BEDROOMS
- 5 BATHROOMS
- POWDER ROOM
- FAMILY ROOM
- SERVICE SUITE
- LIVING ROOM
- OFFICE

OCEAN VIEW

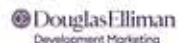


## THE RESIDENCES

SIX FISHER ISLAND

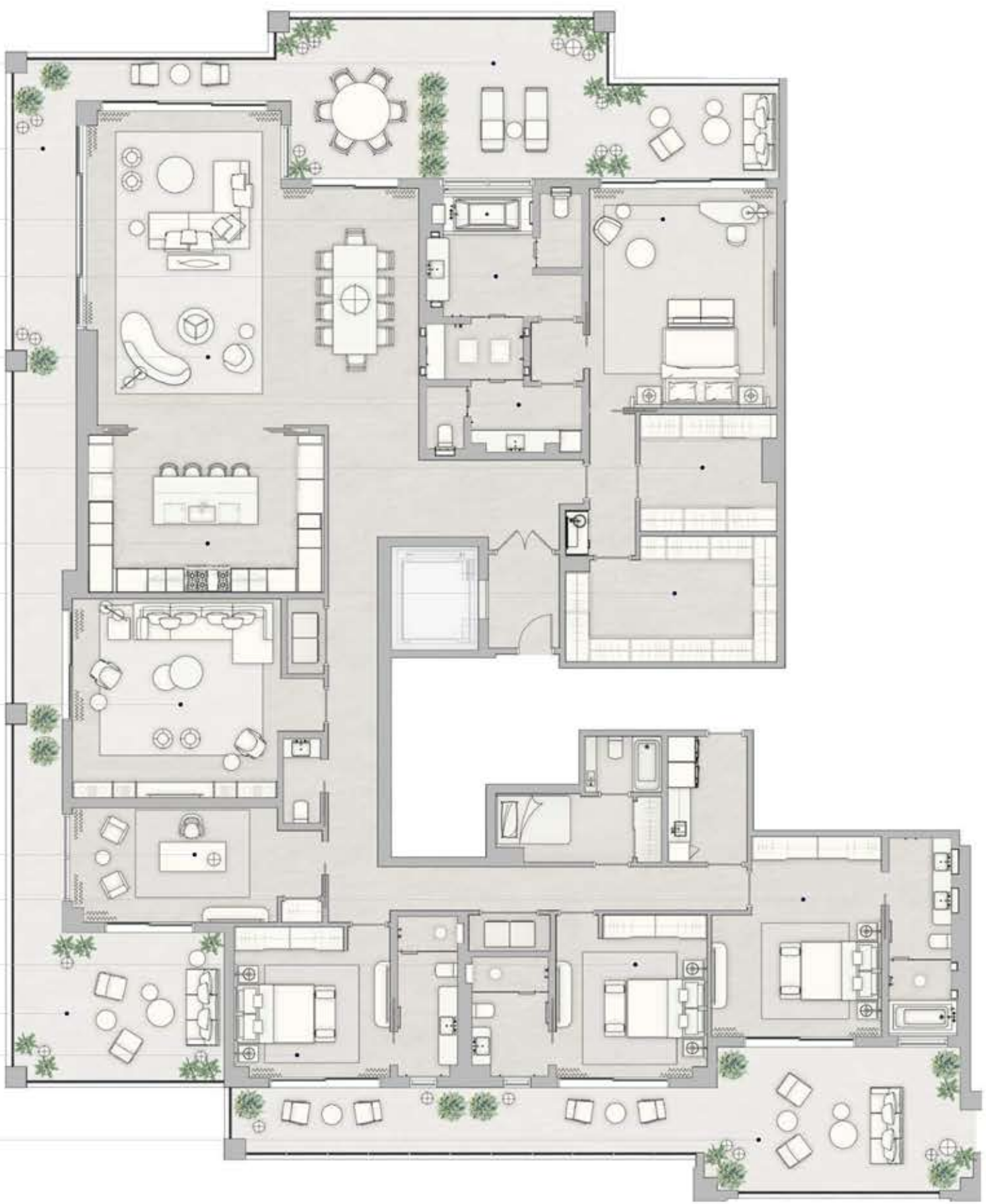
⑥

6 Fisher Island Drive, Fisher Island, FL 33109  
305.873.3852 — 6-fisherisland.com



The dimensions stated for this floor plan are approximate because there are various recognized methods for calculating the square footage of a unit. The square footage stated here is calculated from the exterior boundaries of the exterior walls to the centerline of exterior demising walls without deductions for setbacks, curbs, or architectural features. This method typically results in quoted dimensions greater than the dimensions that would be determined by using other accepted methods. The definition of "useful" and the calculation method to be relied upon is set forth by the Developer in Developer's prospectus which method may result in a square footage calculation less than the result of the calculation method used here. Dimension and unit configuration is not guaranteed and may change during construction. Depictions of furnishings, fixtures and other items of personal property are not included with purchase. Consult the Developer's prospectus to understand Unit dimensions, to learn what is included with purchase and by payment of regular condominium assessments, and to learn all terms and conditions. ©2023 © PWH Parcel 7 Owner, LLC, with all rights reserved.

- BALCONY  
68'-6" x 14'-4"
- BALCONY  
92'-1" x 5'-7"
- PRIMARY BEDROOM  
19'-9" x 16'-9"
- HER BATHROOM  
17'-1" x 13'-11"
- LIVING ROOM  
28'-4" x 29'-9"
- HIS BATHROOM  
12'-2" x 13'-11"
- HIS WARDROBE  
10'-6" x 12'-3"
- KITCHEN  
14'-2" x 21'-1"
- HER WARDROBE  
18'-11" x 11'-4"
- FAMILY ROOM  
17'-11" x 22'-6"
- OFFICE  
10'-4" x 22'-8"
- BEDROOM 2  
18'-1" x 15'-2"
- BEDROOM 3  
13'-6" x 14'-8"
- BALCONY  
18'-10" x 13'-4"
- BEDROOM 4  
13'-7" x 13'-11"
- BALCONY  
66'-5" x 13'



N 25° 45.8255



W 80° 8.4428

# RESIDENCE 06

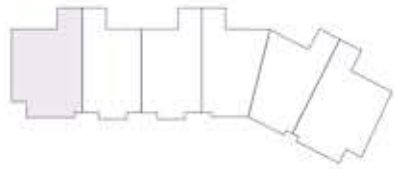
## Alternate

INTERIOR	EXTERIOR
5,058 F <sup>2</sup>	1,943 F <sup>2</sup>
470 M <sup>2</sup>	181 M <sup>2</sup>

TOTAL  
7,001 F<sup>2</sup>  
651 M<sup>2</sup>

- \* 5 BEDROOMS
- 6 BATHROOMS
- POWDER ROOM
- OFFICE
- SERVICE SUITE
- LIVING ROOM

OCEAN VIEW



**THE RESIDENCES**

SIX FISHER ISLAND

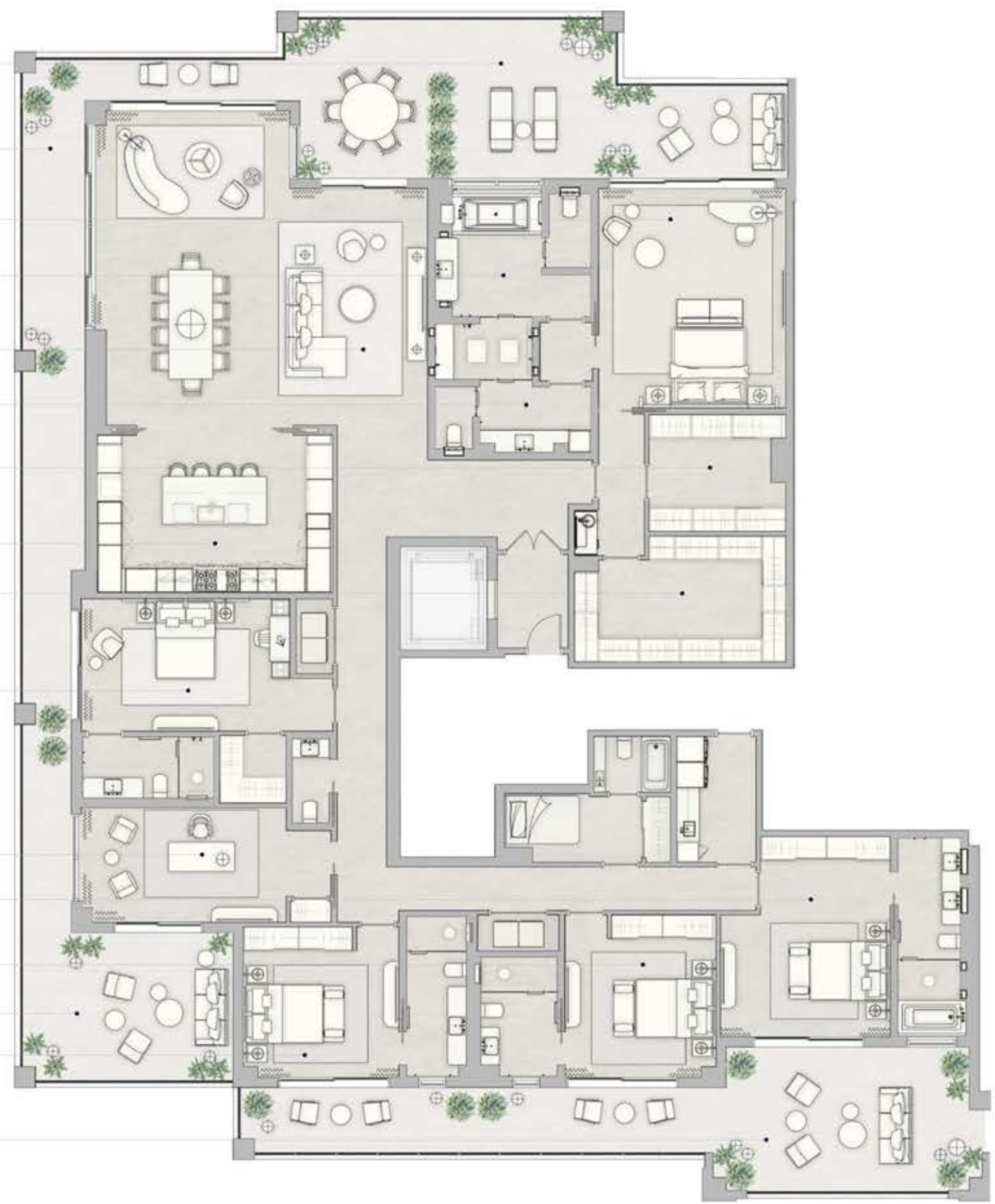
⑥

6 Fisher Island Drive, Fisher Island, FL 33109  
305.873.3852 — 6-fisherisland.com

**Douglas Elliman**  
Development Marketing

The dimensions stated for this floor plan are approximate because there are various recognized methods for calculating the square footage of a unit. The square footage stated here is calculated from the exterior boundaries of the exterior walls to the centerline of exterior demising walls without deductions for setbacks, curbs, or architectural features. This method typically results in quoted dimensions greater than the dimensions that would be determined by using other accepted methods. The definition of "unit" and the calculation method to be relied upon is set forth by the Developer in Developer's prospectus which method may result in a square footage calculation less than the result of the calculation method used here. Dimension and unit configuration is not guaranteed and may change during construction. Depictions of furnishings, fixtures and other items of personal property are not included with purchase. Consult the Developer's prospectus to understand Unit dimensions, to learn what is included with purchase and by payment of regular condominium assessments, and to learn all terms and conditions. ©2023 © 1994 Parcel 7 Owners, LLC, with all rights reserved.

- BALCONY  
68'-6" x 14'-4"
- BALCONY  
92'-1" x 5'-7"
- PRIMARY BEDROOM  
19'-9" x 16'-9"
- HER BATHROOM  
17'-1" x 13'-11"
- LIVING ROOM  
28'-4" x 29'-9"
- HIS BATHROOM  
12'-2" x 13'-11"
- HIS WARDROBE  
10'-6" x 12'-3"
- KITCHEN  
14'-2" x 21'-1"
- HER WARDROBE  
18'-11" x 11'-4"
- SECONDARY BEDROOM  
11'-11" x 22'-6"
- OFFICE  
10'-4" x 22'-8"
- BEDROOM 2  
18'-1" x 15'-2"
- BEDROOM 3  
13'-6" x 14'-8"
- BALCONY  
18'-10" x 13'-4"
- BEDROOM 4  
13'-7" x 13'-11"
- BALCONY  
66'-5" x 13'



N 25° 45.8255



W 80° 8.4428

# RESIDENCE 202

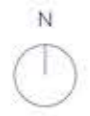
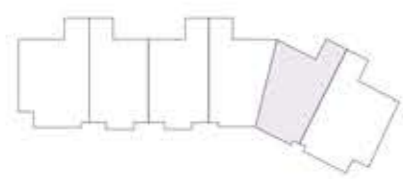
INTERIOR	EXTERIOR
5,212 F <sup>2</sup>	3,333 F <sup>2</sup>
485 M <sup>2</sup>	310 M <sup>2</sup>

TOTAL  
8,545 F<sup>2</sup>  
795 M<sup>2</sup>

\*

- 4 BEDROOMS
- EXERCISE ROOM
- 5 BATHROOMS
- SERVICE SUITE
- POWDER ROOM
- LIVING ROOM
- PRIVATE POOL DECK
- DINING ROOM
- SUMMER KITCHEN

OCEAN VIEW



## THE RESIDENCES

SIX FISHER ISLAND

⑥

6 Fisher Island Drive, Fisher Island, FL 33109  
305.873.3852 — 6-fisherisland.com

**Douglas Elliman**  
Development Marketing

The dimensions stated for this floor plan are approximations because there are various recognized methods for calculating the square footage of a unit. The square footage stated here is calculated from the exterior boundaries of the exterior walls to the centerline of interior dividing walls without deductions for closets, curves, or architectural features. This method typically results in quoted dimensions greater than the dimensions that would be determined by using other accepted methods. The definition of "unit" and the calculation method to be relied upon is set forth by the Developer in Developer's prospectus which method may result in a square footage calculation less than the result of the calculation method used here. Dimension and unit configuration is not guaranteed and may change during construction. Depictions of furnishings, fixtures and other items of personal property are not included with purchase. Consult the Developer's prospectus to understand unit dimensions, to learn what is included with purchase and by payment of regular condominium assessments, and to learn all terms and conditions. 2023 © Fisher Island 7 Owners, LLC, with all rights reserved.

PRIVATE POOL DECK  
70'-9" x 54'-10"

BALCONY  
82'-5" x 31'-8"

LIVING ROOM  
41' x 19'

DINING ROOM  
19'-11" x 25'-9"

PRIMARY BEDROOM  
25'-2" x 14'-4"

BEDROOM 2  
14' x 19'

KITCHEN  
20'-6" x 14'-2"

HER WARDROBE  
14'-8" x 9'

EXERCISE ROOM  
13'-8" x 25'-4"

HIS WARDROBE  
12'-4" x 9'-7"

PRIMARY BATHROOM  
17'-7" x 13'-10"

BEDROOM 3  
14'-8" x 16'-3"

BEDROOM 4  
14'-3" x 15'-7"

BALCONY  
33'-3" x 8'-1"



N 25° 45.8255



W 80° 8.4428

# SITE PLAN

Stretched out across 650 linear feet of pristine shoreline, The Residences at Six Fisher Island is an expansive 6.5-acre site, featuring over 55,000 square-feet of bespoke, five-star amenities available exclusively for residents.

- BAR
- BOARD ROOM
- CAFE
- CHEF'S TABLE
- COLD PLUNGE
- GALLERY LOUNGE
- MEETING ROOMS
- PADEL COURT
- PLAYGROUND
- POOL BAR AND GRILL
- PRIVATE DINING
- SPA AND FITNESS CENTER
- SPAS
- SUNRISE LOUNGE
- SUNRISE POOL
- RESORT POOL
- RESTAURANT
- VR ROOM
- WINE ROOM

## THE RESIDENCES

SIX FISHER ISLAND



6 Fisher Island Drive, Fisher Island, FL 33109  
305.873.3852 — 6-fisherisland.com

**Douglas Elliman**  
Development Marketing

The dimensions stated for this floor plan are approximate because there are various recognized methods for calculating the square footage of a unit. The square footage stated here is calculated from the exterior boundaries of the exterior walls to the centerline of exterior demising walls without deductions for setbacks, curbs, or architectural features. This method typically results in quoted dimensions greater than the dimensions that would be determined by using other accepted methods. The definition of "unit" and the calculation method to be relied upon is set forth by the Developer in Developer's prospectus which method may result in a square footage calculation less than the result of the calculation method used here. Dimension and unit configurations are not guaranteed and may change during construction. Depictions of furnishings, fixtures and other items of personal property are not included with purchase. Consult the Developer's prospectus to understand Unit dimensions, to learn what is included with purchase and by payment of regular condominium assessments, and to learn all terms and conditions. 2023 © 1984 Parcel 7 Owner, LLC, with all rights reserved.

N 25° 45.8255



W 80° 8.4428